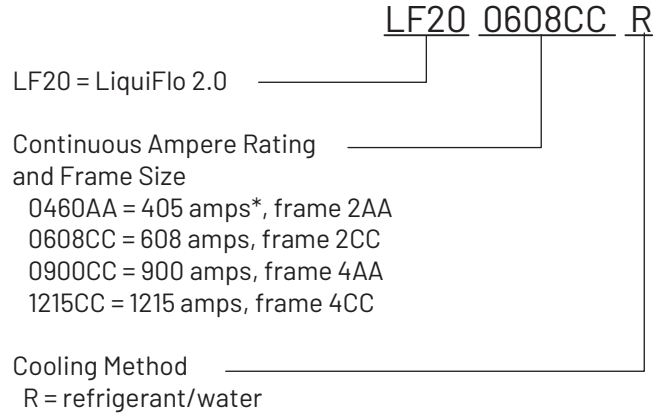


Identifying the Power Module by Model Number

Each LiquiFlo 2.0 AC power module is identified by its model number. See [Figure 8](#). This number appears on the shipping label and on the nameplate of the power module. Power ratings are provided in [Table 2](#).

Figure 8 - Identifying the Power Module Model Number



* 460 A with refrigerant, 405 A with water as coolant

Table 2 - Drive Assembly and Power Module Ratings

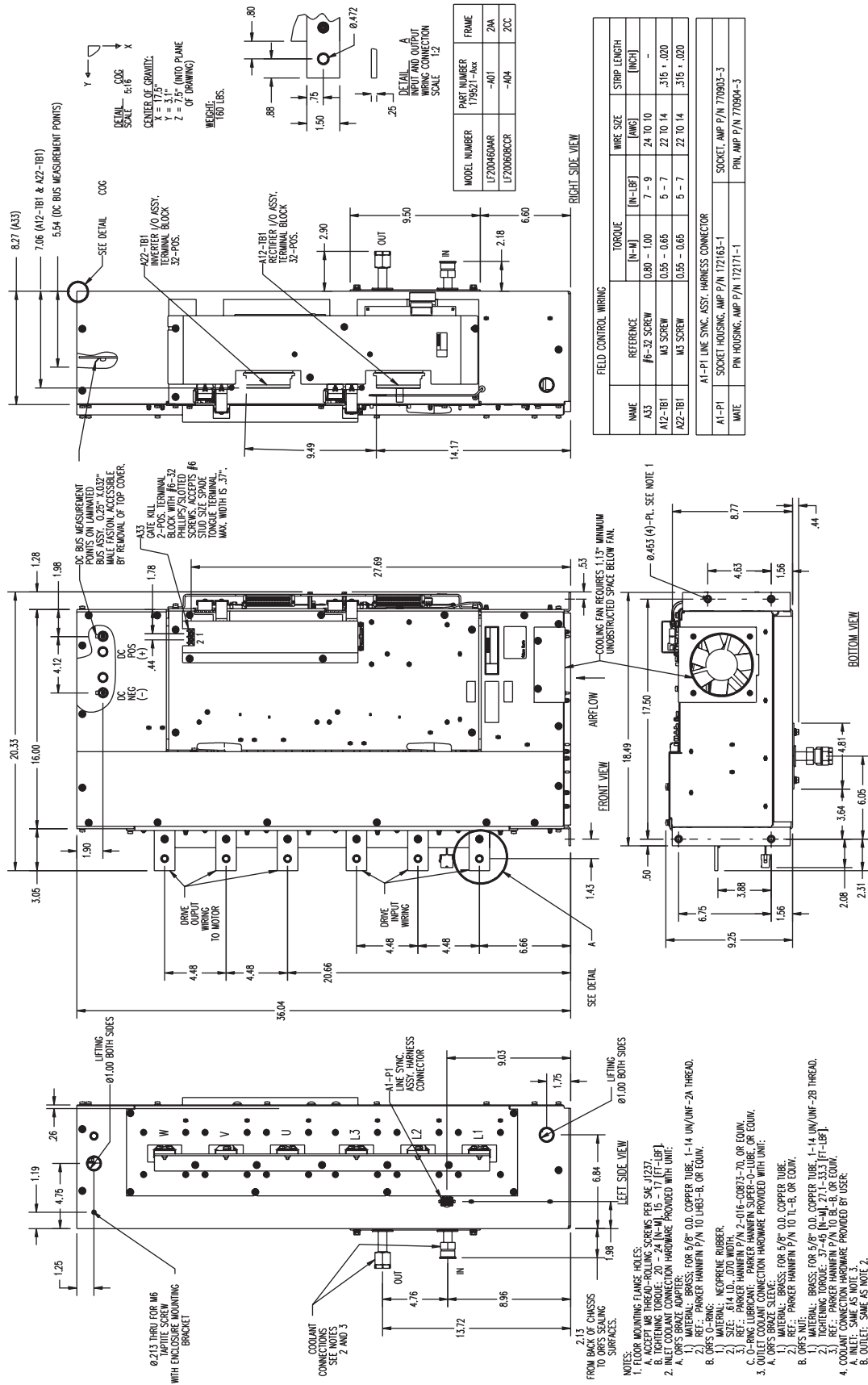
Drive Assembly ID Number	Power Module Model Number	Enclosure Rating	Input Power (KVA)	Input Voltage (V)	Input Current ⁽²⁾ (Amps)	Output Current at 2 kHz ⁽³⁾ (Amps)
180264-A03	LF200460AAR	NEMA 1	337	480 ±10%	405	405
180264-A06	LF200608CCR		505		608	608
180580-A07	LF200900CCR		673		900	900
180580-A09 ⁽¹⁾	LF201215CCR		1010		1215	1215

(1) No overload rating for 180580-A09. 100% output current capability.

(2) 460 A with refrigerant, 405 A with water as coolant.

(3) 110% output current capability for one minute, 150% output current capability for 5 sec.

Figure 15 - Power Module Dimensions - LF200460AAR and LF200608CCR (Frame 3), in.



Replacement Parts

Table 31 through Table 34 list the available replacement parts.

Replacement Parts (Frame 3 Drive)

Table 31 - LiquiFlo 2.0 Drive Replacement Parts (Frame 3 Only)

Description	Part Number / Kit Number	Quantity	
		Frame 3AA	Frame 3CC
		180264-A03	180264-A06
AC Contactor - 140 A, 120 V	100-140D11	3	3
AC Contactor (surge suppressor) 110V, 127V	100-DFSC110	3	3
Capacitor Bank Assembly	21T-LCL-CB9	1	-
	21T-LCL-CB7	-	1
Line Sync. PC Board Assembly	21T-180043	1	1
Line Sync. Board Cover	21T-179723	1	1
Fuse Block, 30 A, 600 V, Class CC, 2-Line	49454-19B	1	1
Fuse Block, 30 A, 600 V, Class CC, 3-Line	49454-19C	2	2
Lug, 2-600 MCM	Thomas & Betts # ADR60-22D	1	1
115 V Fan, 6" dia.	SK-L1-FAN3-F3	2	2
Transformer, 5 kVA	21T-MISC-B-TR1	1	1
Fuse Holder, 600 V, 30 A	Buss # R60030-2SR	1	1
Precharge Resistor, 47 Ohm, 300W	21T-322542-A02 (set of 3 resistors)	3	3
Resistor, 100 kOhm, 50 W	Dale # RH-50	3	3
Circuit Breaker, Main (Qty 1) 65kAIC (base drive = 1) 100kAIC (option = 0)	21P-CB-A600-65-S	1	-
	21P-CB-A600-100-S(100kAIC)	0	-
	21P-CB-A800-65-S	-	1
	21P-CB-A800-100-S(100kAIC)	-	0
	21P-CB-A600-HDL (Handle)	1	1
Fuse, Class RK-5, 600 V, 15 A	Gould/Shawmut # TRS-R15	2	2
Fuse, Class CC, 600 V, 5 A	Gould/Shawmut # ATQR5	1	1
Fuse, Class CC, 600 V, 1 A	Gould/Shawmut # ATQR1	3	3
Fuse, Class CC, 600 V, 20 A	Gould/Shawmut # ATDR20	3	3
Fuse, Class CC, 600 V, 25 A	Gould/Shawmut # ATQR25	1	1
Terminal Block, 6-Position	49455-93E	1	1
Capacitor Guard Panel	179960	1	1
Plastic Knob	Reid # JCL-555	4	4
460 A Power Module	LF200460AAR	1	-
608 A Power Module	LF200608CCR	-	1
LCD OIM, Door-Mounted	RE1LCD	1	1
	REBZL-N1	1	1
Air Filter	180415	1	1
Floor Mounting Kit (Optional)	180380-Q01	3	3
Surge Suppressor	21T-385253-A04	1	1
Inductor, 405 Amp	21T-380097-A02	1	-
Inductor, 610 Amp	21T-380097-A04	-	1

Replacement Parts (Frame 3 Power Module)

Table 32 - LiquiFlo 2.0 Power Module Replacement Parts (Frame 3 Only)

Description	Part Number / Kit Number	Quantity	
		LF200460AAR	LF200608CCR
Wire Harness Assembly, Line Sync.	21T-364644-A01	1	1
Wire Harness Assembly, DC Bus Bleeder Resistors	179743-Q02	1	1
Wire Harness Assembly, Gate Driver, Rectifier Side	181770-A01	1	1
Wire Harness Assembly, Gate Driver, Inverter Side	181770-A01	1	1
Current Feedback Device, 1000 A	179701	6	6
Wire Harness Assembly, Current Feedback Device	363874-A01	1	1
Rectifier Control Assembly	21T-180063-A01	1	1
AC Line I/O Assembly	21T-180090-A01	1	1
Inverter Control Assembly	21T-180064-A01	1	1
Connector, Terminal Block, 32-pin	SK-G9-TB1-S1-A	2	2
Internal Fan	21T-181775-A01	1	1
Rectifier Power Interface Assembly, 440 A, (2) 300 A Modules 608 A, (2) 450 A Modules	21T-351839-A04 21T-351839-A05	1 -	- 1
Inverter Power Interface Assembly, 460 A, (2) 300 A Modules 608 A, (2) 450 A Modules	21T-351893-A04 21T-351893-A05	1 -	- 1
Insulation Sheet	179700	2	2
80 W Power Supply Assembly	21T-180089-A01	2	2
Terminal Block, 2-position	179745	2	2
Wire Harness Assembly, Power Supply, Upper Gate	363869-A01	2	2
Wire Harness Assembly, Power Supply, Logic	179753	2	2
Wire Harness Assembly, Power Supply, Lower Gate	363880-A01	1	1
Communications Interface Assembly	21T-180062-A01	1	1
Cable Assembly, 20-pin	21M-194706-Q01	1	1
Cable Assembly, 30-pin	179694-Q01	2	2
Cable Assembly, 40-pin	179828-Q01	2	2
Standard I/O Option, 24V Assembly	21T-180060-A01	1	1