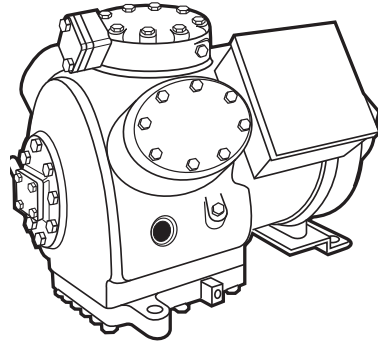


# Compressors, Chillers & Condensers

Compressors,  
Chillers, Condensers

## SEMI-HERMETIC CARLYLE 06E

MEDIUM AND HIGH TEMP, AIR COOLED CONDESNER



06E MEDIUM AND HIGH TEMPERATURE  
COMPRESSOR APPLICATION DATA

MODEL NO	HP	CYL	REFR	SUCTION TEMP RANGE (F)	SST	SCT	SC	BTUH
06E( )150	15	4	R-22	0 to 50	45°	130°	0°	-
06E( )250	20	4	R-22	0 to 50	45°	130°	0°	223.3
06E( )265	25	6	R-22	0 to 50	45°	130°	0°	300.3
06E( )266	25	4	R-22	0 to 50	45°	130°	0°	290
06E( )175	25	6	R-22	0 to 50	45°	130°	0°	-
06E( )275	30	6	R-22	0 to 50	45°	130°	0°	332.8
06E( )199	35	6	R-22	0 to 50	45°	130°	0°	-
06E( )299	40	6	R-22	0 to 50	45°	130°	0°	437.9

MEDIUM AND HIGH TEMP, WATER COOLED CONDENSER

MODEL NO	HP	CYL	REFR	SUCTION TEMP RANGE (F)	SST	SCT	SC	BTUH
06E( )150	15	4	R-22	0 to 50	40°	105°	0°	245.9
06E( )250	20	4	R-22	0 to 50	40°	105°	0°	247
06E( )265	25	6	R-22	0 to 50	40°	105°	0°	334.7
06E( )266	25	4	R-22	0 to 50	40°	105°	0°	302.6
06E( )175	25	6	R-22	0 to 50	40°	105°	0°	364.3
06E( )275	30	6	R-22	0 to 50	40°	105°	0°	363
06E( )199	35	6	R-22	0 to 50	40°	105°	0°	469.7
06E( )299	40	6	R-22	0 to 50	40°	105°	0°	476.3

Motors

Electrical

Heating  
Components

Indoor Air  
Quality

Thermostats

Oils &  
Chemicals

Accessories, Supplies  
& Commodities

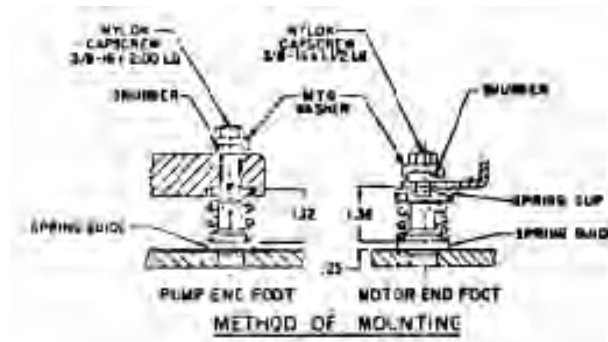
Tools &  
Instruments

Refrigeration

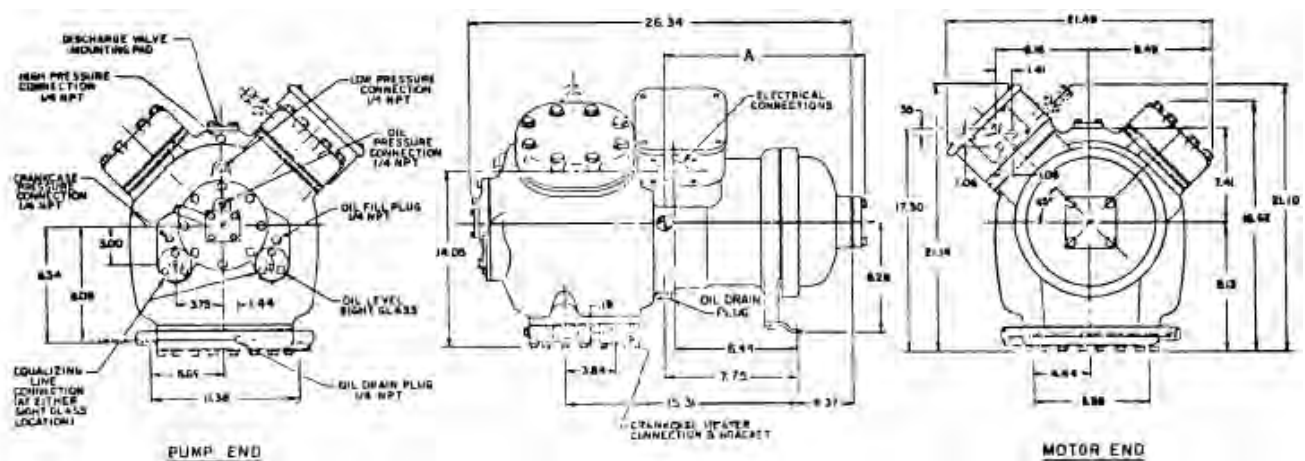
# Compressors, Chillers & Condensers

## SEMI-HERMETIC CARLYLE 06E OUTLINE DRAWING

4 CYLINDER



	06E ( )150	06E ( )250	06E ( )266
MOTOR HORSEPOWER	15	20	25
NO. OF CYLINDERS	4	4	4
BORE AND STROKE (in.)	2.688 x 2.188	2.688 x 2.188	2.688 x 2.874
DISPLACEMENT CFM AT 1750 RPM	50	50	66
OIL, CHARGE, PINTS CPP33-2	14	14	14
NAMEPLATE TEST PRESSURE -HIGH	450 PSI	450 PSI	450 PSI
NAMEPLATE TEST PRESSURE -LOW	315 PSI	315 PSI	315 PSI
DRY WEIGHT LESS SERVICE VALVES	390 LBS	400 LBS	416 LBS
MAX. OPERATING CONDITIONS R-22	50/120° F	50/145° F	50/130° F



# Compressors, Chillers & Condensers

Compressors,  
Chillers, Condensers

Motors

Electrical

Heating  
Components

Indoor Air  
Quality

Thermostats

Oils &  
Chemicals

Accessories, Supplies  
& Commodities

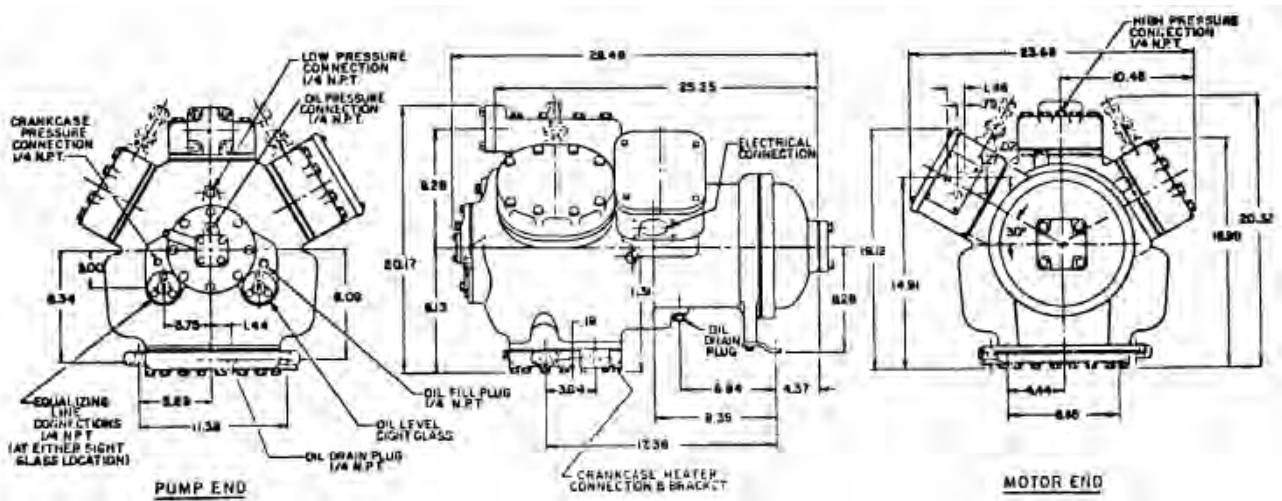
Tools &  
Instruments

Refrigeration

## SEMI-HERMETIC CARLYLE 06E OUTLINE DRAWING

6 CYLINDER

	06E()265	06E()175	06E()275
MOTOR HORSEPOWER	25	25	30
NO. OF CYLINDERS	6	6	6
BORE AND STROKE (in.)	2.688 x 1.980	2.688 x 2.188	2.688 x 2.188
DISPLACEMENT CFM AT 1750 RPM	65	75	75
OIL, CHARGE, PINTS CPP33-2	19	19	19
NAMEPLATE TEST PRESSURE -HIGH	450 PSI	450 PSI	450 PSI
NAMEPLATE TEST PRESSURE -LOW	315 PSI	315 PSI	315 PSI
DRY WEIGHT LESS SERVICE VALVES	460 LBS	435 LBS	460 LBS
MAX. OPERATING CONDITIONS R-22	50/145° F	50/120° F	50/145° F



	06E()099	06E()199	06E()299
MOTOR HORSEPOWER	30	35	40
NO. OF CYLINDERS	6	6	6
BORE AND STROKE (in.)	2.688 x 2.874	2.688 x 2.874	2.688 x 2.874
DISPLACEMENT CFM AT 1750 RPM	65	99	99
OIL, CHARGE, PINTS CPP33-2	19	19	19
NAMEPLATE TEST PRESSURE -HIGH	450 PSI	450 PSI	450 PSI
NAMEPLATE TEST PRESSURE -LOW	315 PSI	315 PSI	315 PSI
DRY WEIGHT LESS SERVICE VALVES	495 LBS	495 LBS	519 LBS
MAX. OPERATING CONDITIONS R-22		50°/120° F	50°/145° F

# Compressors, Chillers & Condensers

**SEMI-HERMETIC  
CARLYLE  
06E, THREE PHASE**

**STANDARD EFFICIENCY**

CARLYLE MODEL	TOTALINE MODEL	VOLTS	PH	HZ	HP	CYL	OIL CHG (PINTS)	MAX WATTS	MAX RLA	MTA	LRA
06EX150-160	6E150TL160T	575	3	60	15	4	14	22,000	31	38	98
06EX150-360	6E150TL360T	208-230/460	3	60	15	4	14	22,000	72/36	90/45	283/142
06EX150-660		400/460	3	50/60	15	4	14	18,300/22,000	72/36	90/45	283/142
06EX250-160	6E250TL160T	575	3	60	20	4	14	25,300	36	45	120
06EX250-360	6E250TL360T	208-230/460	3	60	20	4	14	25,300	87/44	108/54	345/173
06EX250-660		460	3	60	20	4	14	25,300	45	56	150
06EX266-160		575	3	60	25	4	14	33,600	46	57	164
06EX266-360		208-230/460	3	60	25	4	14	33,600	112/56	140/70	446/223
06EX266-660		460	3	60	25	4	14	33,600	57	71	205
06EX250-360	6E250TL360T	200/400	3	50	20	4	14	21,100	87/44	108/54	345/173
06EX250-660		400	3	50	20	4	14	21,100	45	56	150
06EX266-360		200/400	3	50	25	4	14	28,000	112/56	140/70	446/223
06EX266-660		400	3	50	25	4	14	28,000	57	71	205
06EX265-160	6E265TL160T	575	3	60	25	6	19	33,600	46	57	164
06EX265-360	6E265TL360T	208-230/460	3	60	25	6	19	33,600	112/56	140/70	446/223
06EX265-660		460	3	60	25	6	19	33,600	57	71	205
06EX175-160	6E175TL160T	575	3	60	25	6	19	33,600	46	57	164
06EX175-360	6E175TL360T	208-230/460	3	60	25	6	19	33,600	112/56	140/70	446/223
06EX175-660		460	3	60	25	6	19	33,600	57	71	205
06EX275-160	6E275TL160T	575	3	60	30	6	19	39,100	52	65	176
06EX275-360	6E275TL360T	208-230/460	3	60	30	6	19	39,100	135/68	168/84	506/253
06EX275-660		460	3	60	30	6	19	39,100	65	81	220
06EX299-160	6E299TL160T	575	3	60	40	6	19	54,000	77	97	240
06EX299-360	6E299TL360T	208-230/460	3	60	40	6	19	54,000	189/95	236/118	690/345
06EX299-660		460	3	60	40	6	19	54,000	97	121	300
06EX265-360		200/400	3	50	20	6	19	28,000	112/56	140/70	446/223
06EX265-660		400	3	50	20	6	19	28,000	57	71	205
06EX175-360		200/400	3	50	25	6	19	28,000	112/56	140/70	446/223
06EX175-660		400	3	50	25	6	19	28,000	57	71	205
06EX275-360		200/400	3	50	30	6	19	32,600	135/68	168/84	506/253
06EX275-660		400	3	50	30	6	19	32,600	65	81	220
06EX299-360		200/400	3	50	40	6	19	45,000	189/95	236/118	690/345
06EX299-660		400	3	50	40	6	19	45,000	97	121	300

FOR REFERENCE  
PHYSICAL AND ELECTRICAL DATA

06EX HAS BEEN REPLACED BY 06ET SERIES

# Compressors, Chillers & Condensers

Compressors,  
Chillers, Condensers

Motors

Electrical

Heating  
Components

Indoor Air  
Quality

Thermostats

Oils &  
Chemicals

Accessories, Supplies  
& Commodities

Tools &  
Instruments

Refrigeration

## SEMI-HERMETIC

### CARLYLE

### 06E, THREE PHASE

HIGH EFFICIENCY, SUCTION CUT-OFF

CARLYLE MODEL	TOTALINE MODEL	VOLTS	PH	HZ	HP	CYL	OIL CHG (PINTS)	MAX WATTS	MAX RLA	MTA	LRA
06ET150-160		575	3	60	15	4	14	22,000	31	38	98
06ET150-360	6E150TL360T	208-230/460	3	60	15	4	14	22,000	72/36	90/46	283/142
06ET150-660 PW		460	3	60	15	4	14	22,000	36	46	142
06ET250-160	6E250TL160T	575	3	60	20	4	14	25,300	36	45	120
06ET250-360	6E250TL360T	208-230/460	3	60	20	4	14	25,300	87/44	108/54	345/173
06ET250-660 PW		460	3	60	20	4	14	25,300	44	54	173
06ET150-320		200/400	3	50	15	4	14	18,300	72/36	90/46	283/142
06ET150-360		200/400	3	50	15	4	14	18,300	72/36	90/46	283/142
06ET150-620		400	3	50	15	4	14	18,300	36	46	142
06ET150-660 PW		400	3	50	15	4	14	18,300	36	46	142
06ET250-320		200/400	3	50	20	4	14	21,100	87/44	108/54	345/173
06ET250-360	6E250TL360T	200/400	3	50	20	4	14	21,100	87/44	108/54	345/173
06ET250-620		400	3	50	20	4	14	21,100	44	54	173
06ET250-660 PW		400	3	50	20	4	14	21,100	44	54	173
06ET265-160		575	3	60	25	6	19	33,600	46	57	164
06ET265-360	6E265TL360T	208-230/460	3	60	25	6	19	33,600	112/56	140/70	446/223
06ET265-360 R	6E265TL360TR	208-230/460	3	60	25	6	19	33,600	112/56	140/70	446/223
06ET265-660 PW		460	3	60	25	6	19	33,600	56	70	223
06ET175-160		575	3	60	25	6	19	33,600	46	57	164
06ET175-360	6E175TL360T	208-230/460	3	60	25	6	19	33,600	112/56	140/70	446/223
06ET175-360 R	6E175TL360TR	208-230/460	3	60	25	6	19	33,600	112/56	140/70	446/223
06ET175-660 PW		460	3	60	25	6	19	33,600	56	70	223
06ET275-160	6E275TL160T	575	3	60	30	6	19	39,100	52	65	176
06ET275-360	6E275TL360T	208-230/460	3	60	30	6	19	39,100	135/68	168/84	506/253
06ET275-360 R	6E275TL360TR	208-230/460	3	60	30	6	19	39,100	135/68	168/84	506/253
06ET275-660 PW		460	3	60	30	6	19	39,100	68	84	253
06ET299-160	6E299TL160T	575	3	60	40	6	19	54,000	75	94	276
06ET299-360	6E299TL360T	208-230/460	3	60	40	6	19	54,000	189/95	236/118	690/345
06ET299-360 R	6E299TL360TR	208-230/460	3	60	40	6	19	54,000	189/95	236/118	690/345
06ET299-660 PW		460	3	60	40	6	19	54,000	95	118	345
06ET265-320		200/400	3	50	25	6	19	28,000	112/56	140/70	446/223
06ET265-360	6E265TL360	200/400	3	50	25	6	19	28,000	112/56	140/70	446/223
06ET265-620		400	3	50	25	6	19	28,000	56	70	223
06ET265-660		400	3	50	25	6	19	28,000	56	70	223
06ET175-320		200/400	3	50	25	6	19	28,000	112/56	140/70	446/223
06ET175-360	6E175TL360T	200/400	3	50	25	6	19	28,000	112/56	140/70	446/223
06ET175-620		400	3	50	25	6	19	28,000	56	70	223
06ET175-660		400	3	50	25	6	19	28,000	56	70	223
06ET275-320		200/400	3	50	30	6	19	32,600	135/68	168/84	506/253
06ET275-360	6E275TL360T	200/400	3	50	30	6	19	32,600	135/68	168/54	506/253
06ET275-620		400	3	50	30	6	19	32,600	68	84	253
06ET275-660		400	3	50	30	6	19	32,600	68	84	253
06ET299-320		200/400	3	50	40	6	19	45,000	189/95	236/118	690/345
06ET299-360	6E299TL360T	200/400	3	50	40	6	19	45,000	189/95	236/118	690/345
06ET299-620		400	3	50	40	6	19	45,000	95	118	345
06ET299-660		400	3	50	40	6	19	45,000	95	118	345

“R” Suffix designates Reverse Head

“PW” Suffix designates Part Wind Compressor