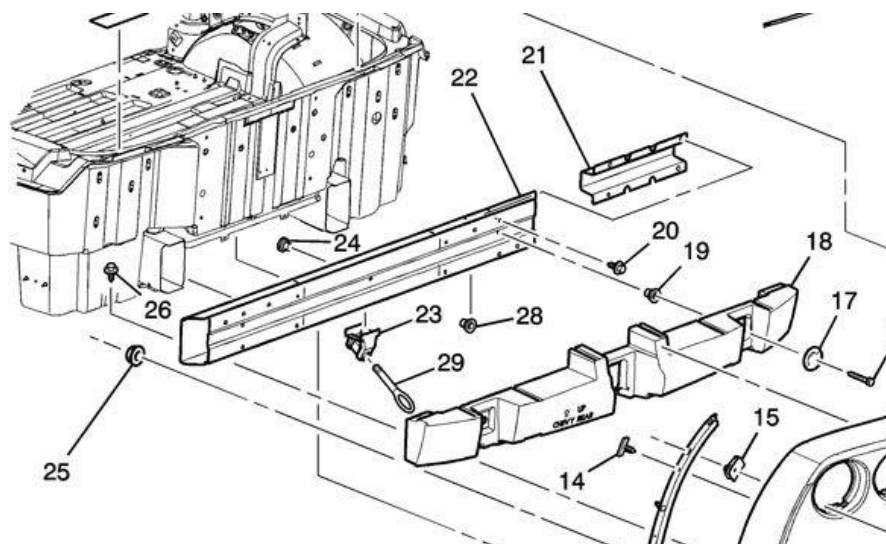


## C5/C6 PARACHUTE MOUNT INSTALLATION INSTRUCTIONS

1. Mark center of bumper width on the ground with a plumb-bob or other tool (there's a few marks/dimples/etc. on the bumper cover that you can reference for locating the center width).
2. Measure the height of the bottom of the license plate from the ground; this will be your approximate mounting height (see picture included) to the bottom of the 1-1/4" slide assembly tube. (This height can float some amount based on your preference - more later in steps)



3. Remove the rear bumper cover; take your measurement from the previous step and subtract **2.25"** from it. That will be the height above ground that you will use to mark the center of the mounting bolt holes.
4. Transfer your center of width mark to the rear cross-member (**item #22** on the second picture), then hold/clamp the parachute mount base in place using the mounting bolt hole height you calculated in the previous step. Make sure it's level side to side.



5. At this point you have some 'wobble room' to raise or lower the mount if you desire - keeping in mind that the best mounting position is with the bolts near the center of the height of the cross member. (This isn't a fussy measurement either, so don't sweat it if it's 1/2" off center.)

6. Once you have set your desired mounting height of the base, mark the (4) mounting holes with a marker.
7. Remove the mounting base and drill a 3/16" (or similar small size) pilot hole all the way through the cross member.

**8. Note: for the C5 installation (ONLY) – skip this step if you are installing on a C6:**

- a. We recommend to drill through the cross member with the pilot bit and into the tub, to locate the centers of each of the mounting bolts. From the inside of the car you will then need to drill a 1-3/8" hole through the tub to be able to install the washers and lock-nuts from the backside of the cross member.

9. Mount the base assembly. Tighten the supplied bolts appropriately and do not over-tighten them which can crush the rear cross member.
10. Temporarily reinstall the rear bumper cover, and project the location of the stub tube onto the inside of the bumper cover.
11. Using the mark on the cover, drill a 1-3/8" through the bumper cover, and deburr the edge.
12. If applicable, trim the license plate to match the hole in the bumper cover.
13. Reinstall the bumper cover, and if desired trim the crash foam to fit around the parachute mount.
14. From under the car, install the slide assembly and bolt together with the supplied bolt.
15. Mount the parachute per manufacturers instructions.