



LIFT-OFF DOOR HINGE KIT

1993 - 2002 F-BODY

INSTALLATION INSTRUCTIONS

THANK YOU FOR PURCHASING OUR PRODUCT!

WE STRIVE TO PROVIDE AN EXCEPTIONAL PRODUCT!

OUR WORD OF CAUTION – PLEASE READ:

THE INSTALLATION OF THIS KIT REQUIRES AN ADVANCED SKILL LEVEL AND IS NOT INTENDED AS A BEGINNER'S MODIFICATION.

READ THESE INSTRUCTIONS THOROUGHLY AND UNDERSTAND THEM COMPLETELY BEFORE YOU BEGIN INSTALLATION.

YOU ARE 100% RESPONSIBLE FOR YOUR CAR AND ANY MODIFICATIONS DONE TO IT – KNOW YOUR CAPABILITIES AND YOUR LIMITS!

IF, FOR ANY REASON, YOU ARE NOT CONFIDENT OR COMFORTABLE PERFORMING THE MODIFICATIONS NECESSARY TO INSTALL THIS KIT AS DESCRIBED IN THESE INSTRUCTIONS, PLEASE FIND SOMEONE WHO HAS THE PROPER QUALIFICATIONS TO DO SO.

IF YOU DECIDE YOU SHOULD NOT COMPLETE THE INSTALLATION YOURSELF, PLEASE CONTACT US AND WE WILL WORK TO FIND A CAPABLE INSTALLER NEAR YOU. WE ARE AVAILABLE MONDAY THROUGH FRIDAY, 8 – 5 EST., CALL US @ 980-635-1930

**THANKS,
THE RSM TEAM**



motorsportsrocksolid1@gmail.com

2130 NEWTON DRIVE
STATESVILLE, NC 28677
980-635-1930

THIS KIT IS DESIGNED TO ONLY SUPPORT THE WEIGHT OF 'GUTTED' OEM AND LIGHTWEIGHT AFTERMARKET DOORS!

NOT INTENDED FOR FULL WEIGHT OEM DOORS WITH OEM GLASS

This installation requires the use of an adjustable stand, or a second person.

Kit Contents:

- (1 pair) Left & Right Upper Body Bracket
- (1 pair) Left & Right Upper Door Bracket
- (1 pair) Left & Right Lower Body Bracket
- (1 pair) Left & Right Lower Door Bracket
- (2) Lower door backing plates
- (2) Upper door backing plates
- (4) 3/8" spacer shims
- (8) 3/8-16 Bolts
- (8) 3/8-16 Nylon Lock Nuts
- (16) 3/8" Flat Washers



motorsportsrocksolid1@gmail.com

2130 NEWTON DRIVE
STATESVILLE, NC 28677
980-635-1930

Installation:

1. Identify the brackets based on the pictures below.
 - a. Left as pictured = Driver Side
 - b. Right as pictured = Passenger Side



Lower hinge set – side view



Lower hinge set – top view



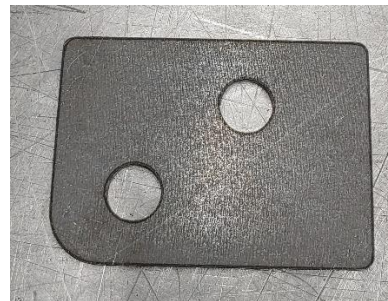
Upper hinge set – side view



Upper hinge set – top view



Upper Backing Plate

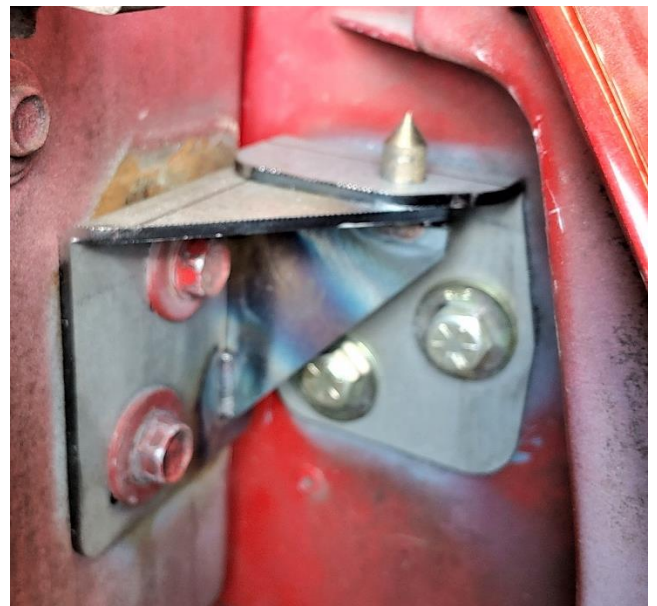


Lower Backing Plate

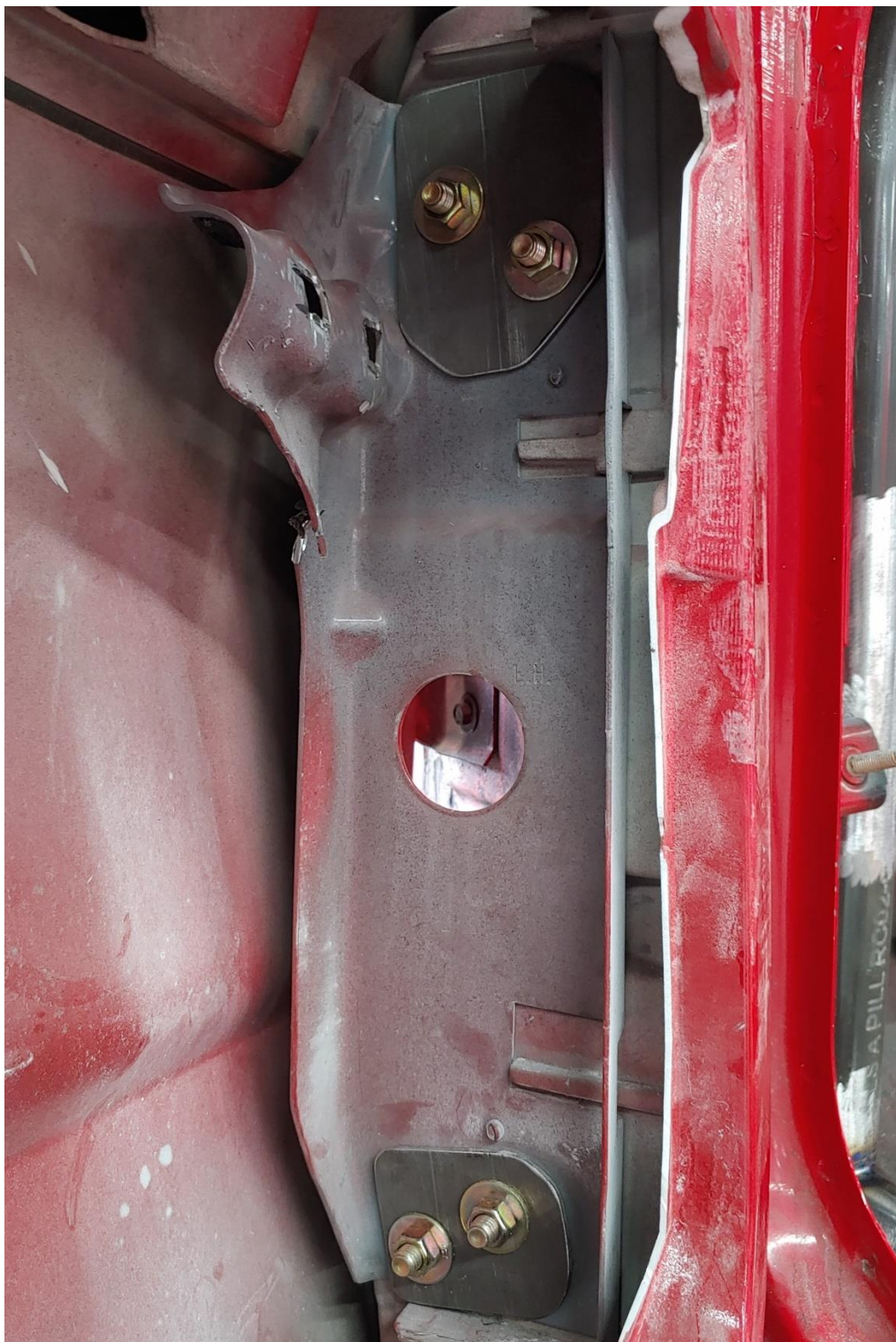
2. Attach the body side mounting brackets, with the fasteners snug-tight. Use a short level to match the angle of the bracket surfaces to the car and make them parallel with each other. (The rocker area is our usual reference).
3. Attach the door side mounting brackets to the doors, using the provided 3/8" fasteners.
 - a. (If using the OEM doors, remove & discard the factory stud mounted plates)
 - b. The bolts must stick through from outside in to allow for the correct hinge clearance when opening & closing.
 - c. The correct mounting order is bolt, washer, door plate, door, backing plate, washer and then lock-nut.
4. Once the brackets are attached, set the door onto the lower pin first, then align with the top pin and slide into place. You must support the other end of the door the entire time during the process.
5. Using your door support (or helper), adjust the door position and set the position of the hinge brackets to line up the door with the body & striker mechanism.
 - a. This will take a few tries, so be prepared for lots of small adjustments.



DRIVER SIDE LOWER HINGE INSTALLED



DRIVER SIDE UPPER HINGE INSTALLED



**DRIVER SIDE BACKING PLATES INSTALLED
(PRE-PRODUCTION PLATES SHOWN)**