

**SFI 25.5 ROLL CAGE
"STARTER KIT"
INSTALLATION INSTRUCTIONS
1993 - 2002 F-BODY**

THANK YOU FOR PURCHASING OUR PRODUCT!

WE STRIVE TO PROVIDE AN EXCEPTIONAL PRODUCT!

OUR WORD OF CAUTION – PLEASE READ:

THE INSTALLATION OF THIS KIT REQUIRES AN ADVANCED SKILL LEVEL AND IS NOT INTENDED AS A BEGINNER'S MODIFICATION.

READ THESE INSTRUCTIONS THOROUGHLY AND UNDERSTAND THEM COMPLETELY BEFORE YOU BEGIN INSTALLATION.

YOU ARE 100% RESPONSIBLE FOR YOUR CAR AND ANY MODIFICATIONS DONE TO IT – KNOW YOUR CAPABILITIES AND YOUR LIMITS!

IF, FOR ANY REASON, YOU ARE NOT CONFIDENT OR COMFORTABLE PERFORMING THE MODIFICATIONS NECESSARY TO INSTALL THIS KIT AS DESCRIBED IN THESE INSTRUCTIONS, PLEASE FIND SOMEONE WHO HAS THE PROPER QUALIFICATIONS TO DO SO.

IF YOU DECIDE YOU SHOULD NOT COMPLETE THE INSTALLATION YOURSELF, PLEASE CONTACT US AND WE WILL WORK TO FIND A CAPABLE INSTALLER NEAR YOU. WE ARE AVAILABLE MONDAY THROUGH FRIDAY, 8 – 5 EST., CALL US @ 980-635-1930

**THANKS,
THE RSM TEAM**

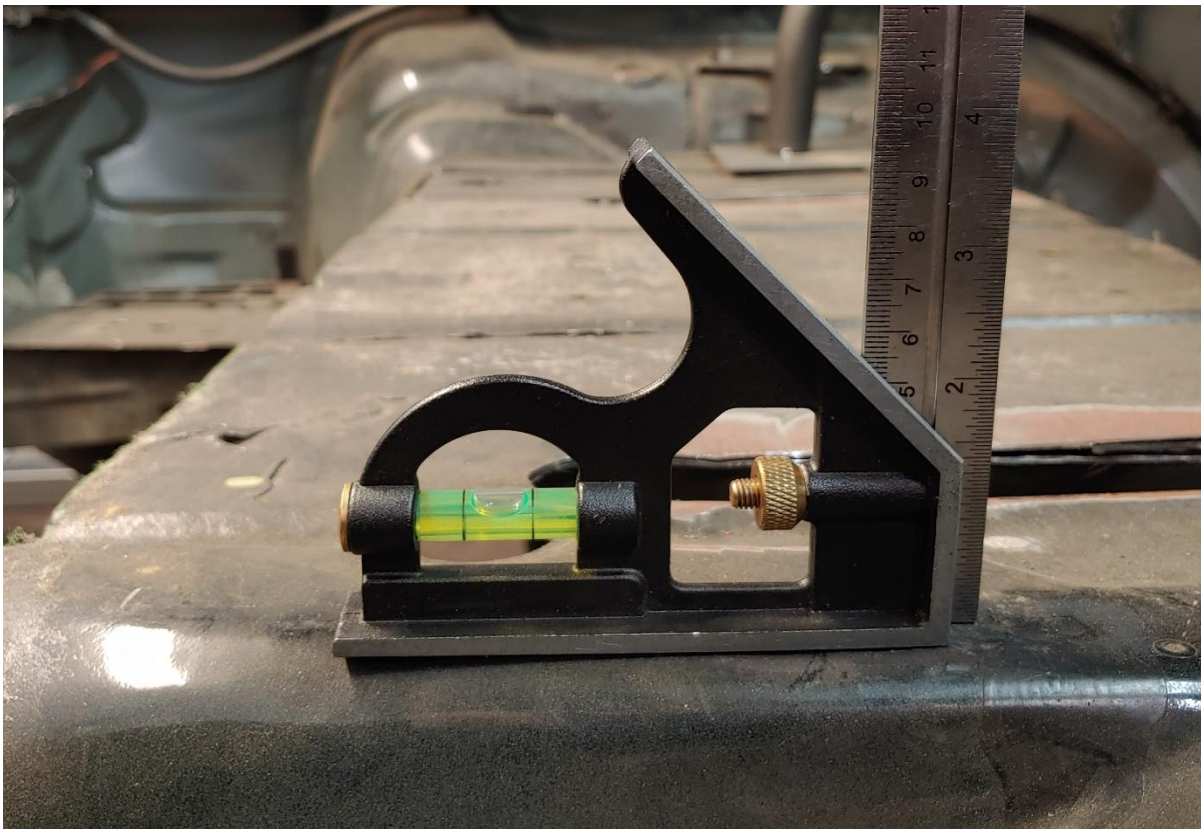


motorsportsrocksolid1@gmail.com

2130 NEWTON DRIVE
STATESVILLE, NC 28677
980-635-1930

Pre-Installation Notes & Recommendations:

1. Remove all interior panels & components, including seats and the dash assembly.
2. Remove any sound deadening material near the installation location of the base plates.
3. **Remove the OEM fuel tank & secure the fuel lines to prevent fire/explosion – just do it! Same for aftermarket fuel cells!**
4. The first portion of the installation is to temporarily fit the main tubes of the cage into place, and then break it down partially to be able to weld the main hoop, C-pillars and tubes that connect to the C-pillars together, then fit back into place. Once back in place, proceed with installing the rest of the tubes.
5. We reference the level of the car off of the structure in the hatch area – see picture below. This will aid in your measuring of the main hoop lay-back.



Continued on next page -

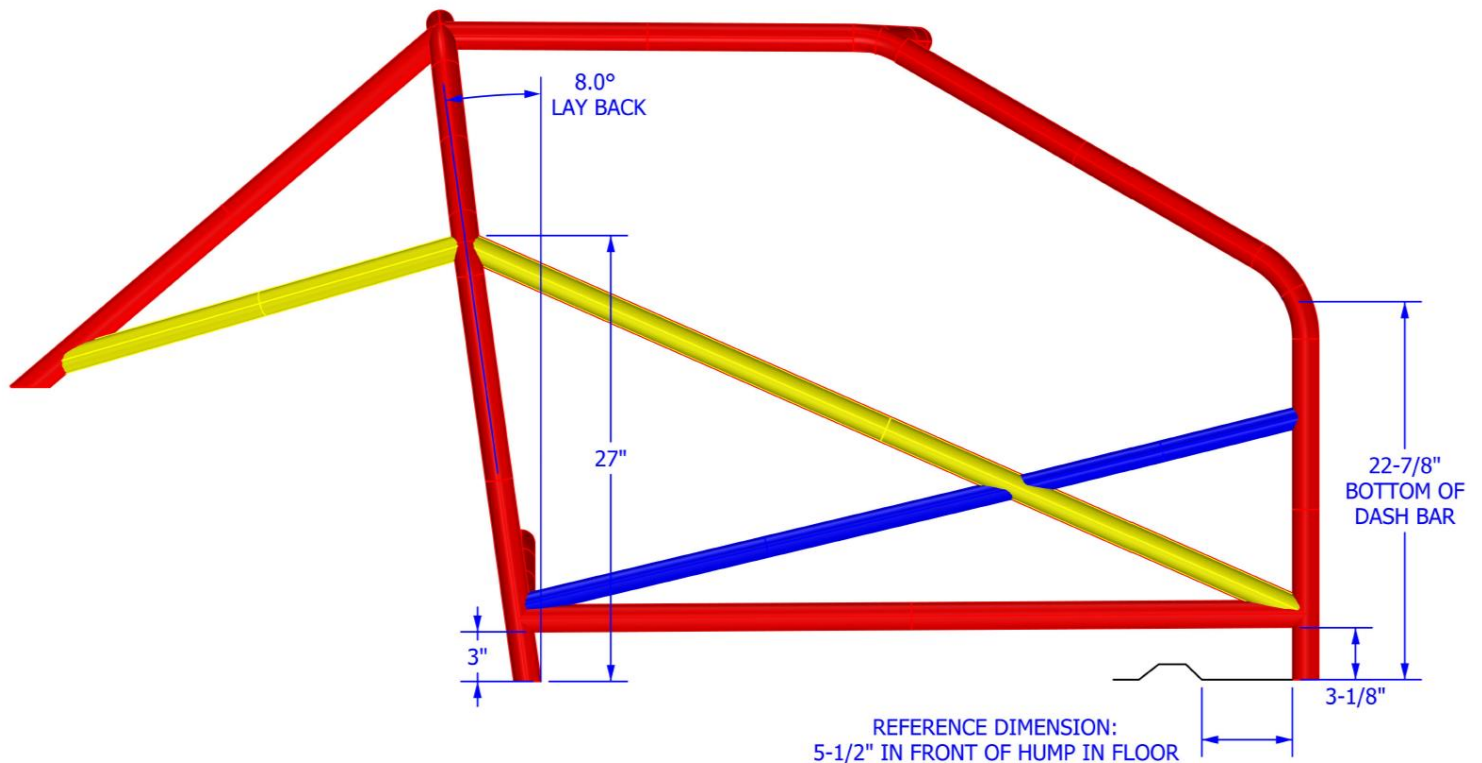


motorsportsrocksolid1@gmail.com

2130 NEWTON DRIVE
STATESVILLE, NC 28677
980-635-1930

INITIAL LAYOUT:

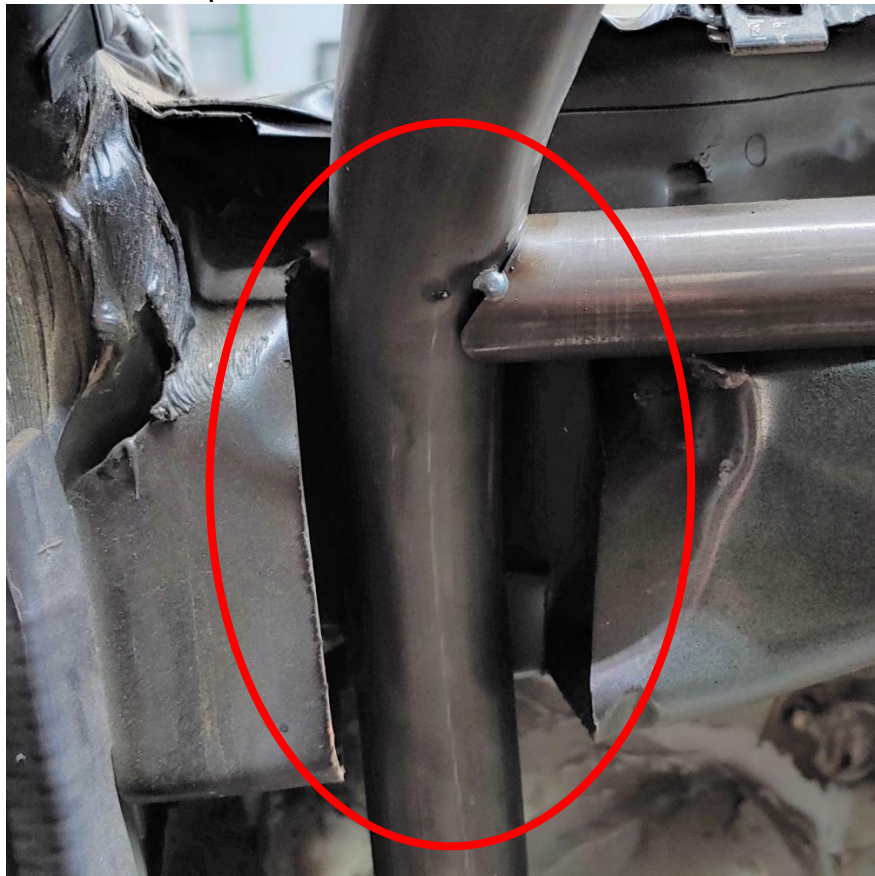
1. Place floor plates in position:
 - a. The paired bent plates with perforated cuts are for the main hoop. The curve of the perforated cut should match the curve of the floor structure. Once located, hammer the protruding portion of the plate down to meet the sheet metal & finish welding in place
 - b. The other (2) bent plates with matching bends are for the A-Pillars. The flanges get placed flush to the inside rocker face.
 - c. (1) 6"x6" Flat plate is for driver side C-pillar, (1) 6"x6" 'slightly' bent plate is for passenger side C-pillar. Bend faces down and to the rear of the car.
2. Locate the main hoop in the car, with the legs ~1/2" to 1" forward of the raised floor structure. Lean rearward 8° and support in place. You may need to slide it front/back as needed once the A-pillars are set in position.
3. Fit rear lower cross member & harness bar in main hoop & tack in place.
 - a. The lower rear cross member mounts approximately 3" above the floor plate, and will be adjacent to the rocker bars.
 - b. The harness bar height will be set by the two vertical tubes which mount between.



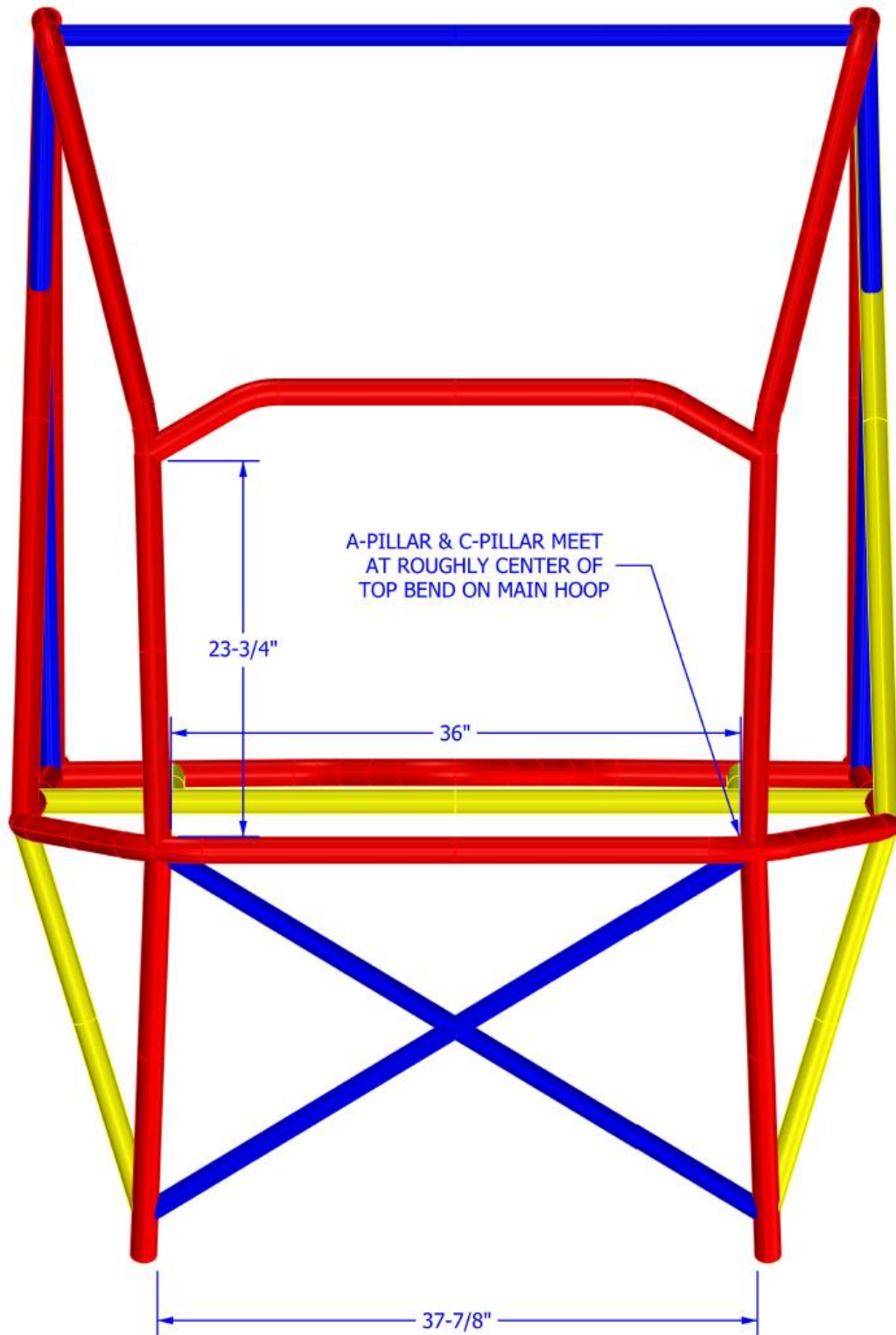
Continued on next page -



4. You must notch in the body structure on the driver side for the A-pillar to be installed at the correct location. See picture below:



5. Temporarily install the A-pillars, with the notch hitting the center of the bend on the main hoop, and the bottom of the leg at 5-1/2" forward of the hump in the floorboard.
6. Fit the rocker bars in place, and verify the fitment of the tube assembly so far.
7. If the rocker bars fit in place, proceed to install the C-pillars, rear-X, and the main hoop to C-pillar brace tubes. Reference the dimensions in the layout below.



8. Once the C-pillars, rear-X, and the main hoop to C-pillar brace tubes are positioned and tacked, dismantle the tubes forward of the main hoop and 'gently' move the main hoop and C-pillar assembly as needed to fully weld the joints together.
9. Reposition the welded assembly back into place, and reattach the A-pillars & Rocker bars.
10. Install the dash bar, measuring 22-7/8" from bottom of the tube to the top of the A-pillar base plate.
11. Install the door bars per referenced dimensions in the first picture.
12. Place the 'eyebrow' bar in position, noting the dimensional reference in the above picture.
13. Continue with the installation of the rest of the tubes per SFI 25.5 guidelines.

