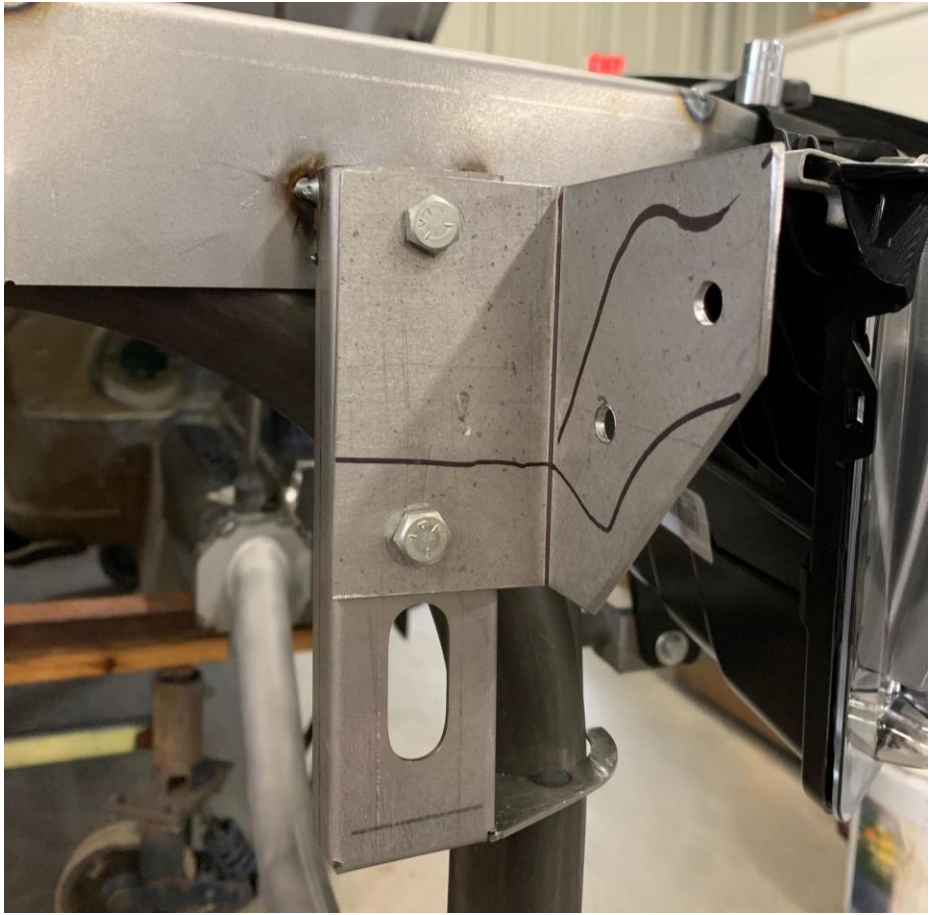
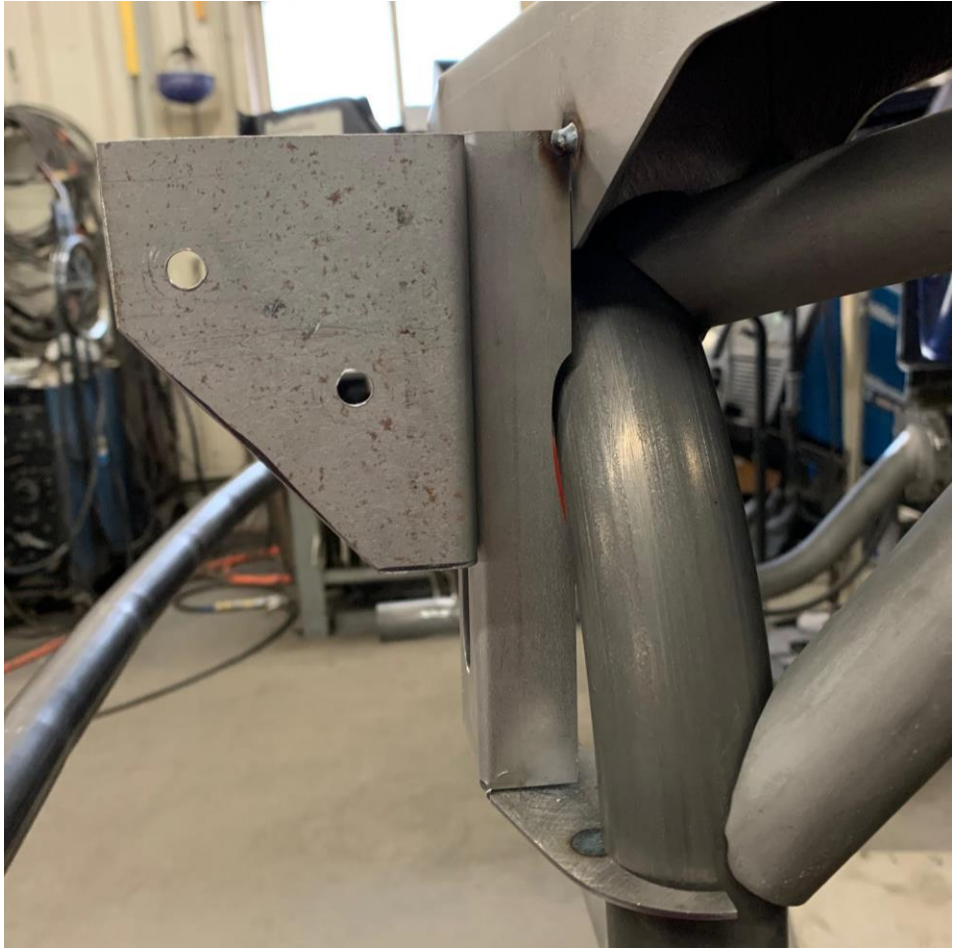


10-14 GT500 BRACKET INSTALL

In addition to the existing S197 tube front kit installation instructions – the following must be performed to accommodate for the 2010 to 2014 GT500 front fascia and plastic supports.

1. Temporarily locate the supplied L-brackets onto the mid brackets as shown below. Do not drill mounting holes into the mid brackets until all parts have been test fitted.





2. Trim the upper fascia supports as shown:













3. Fit and mount fascia; once in place drill holes for brackets into plastic support and mid-brackets on tube front.



