

PROJECT
FLOORS
Your Project. Our Floors.

PROJECT
FLOORS
Your Project. Our Floors.

**Ponsonby /
Murray's Bay
Collection**

Project Floors NZ Ltd
27 Anvil Road, Silverdale, Auckland 0932
3 Eva Street, Te Aro, Wellington 6011
41 Welles Street, Christchurch Central, Christchurch 8011
www.projectfloors.co.nz Tel: 09 444 4165 Email: salesoffice@projectfloors.co.nz

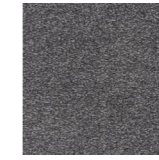
COLOUR OPTIONS Ponsonby / Murray's Bay

When planning and modernising any space the goal is to create a productive space for all. Well-being in all spaces increases motivation, creativity and efficiency. An environment in which one feels at home is made up of the correct materials, forms and colours in order to leave behind an overall impression of comfort and warmth.

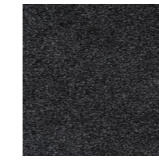
Project Floors specialises in design floor coverings, which offer real advantages in modern design. Bespoke or standard, carpet planks and tiles, authentic reproductions of wood, stone and ceramic designs which are almost indistinguishable from the real thing and form the foundation of your personalised interior, be it discreetly reserved or eye-catching and provocative.

The sheer wealth of designs means there's something for everyone, offering unlimited ways in which to combine and compliment them with different designs patterns. The use of features, inlays or borders to create an individual interior design. Different module sizes and shapes from planks to squares in a special format can offer classical elegant installations like herringbone or chevron.

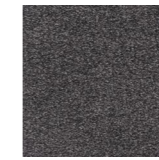
In all you can use this fact to change the most unwelcoming interior to a harmonized ambience with suitable materials, shapes and colours. Harmonic surroundings can contribute to the well-being and a more positive attitude towards life in all areas.



Ponsonby 1371



Ponsonby 1374



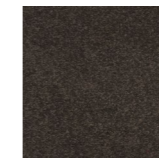
Ponsonby 1377



Ponsonby 1396



Murray's Bay 1442



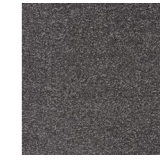
Murray's Bay 1473



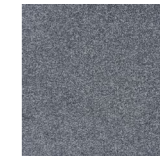
Murray's Bay 1476



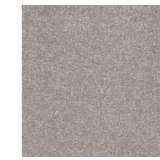
Murray's Bay 1497



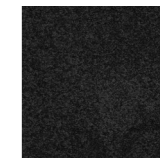
Ponsonby 1372



Ponsonby 1376



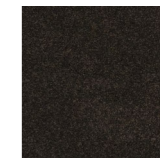
Ponsonby 1395



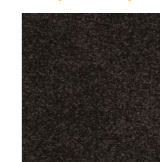
Murray's Bay 1430



Murray's Bay 1471



Murray's Bay 1474



Murray's Bay 1477

Product Specifications

Product Construction	Cut Pile
Yarn Fibre	100% Solution Dyed Nylon 6 (SDN)
Yarn Supplier	INVESTA
Colour System	100% Solution Dyed
Stitches	1/10
Pile Thickness	9mm (+/-5%)
Size description	3.66
Backing	Action Fleece
Primary Backing	Woven
Commercial Warranty	10 Years
Residential Warranty	25 Years

Performance Specifications

VOC Emission	ASTM D5116-06 <0.5mg/m ² /hour (CRI GLP)
Flammability	ASTM D- 2859//FF1-70//16CRF 1630 (PASS8/8)
Critical Radiant Flux	ASTM E648-08 (Class 1)
Static	ISO 6356 (0.2KV)
Colour Fastness	AATCC/16 (5/5 on Grey Scale)
Thermal Resistance	ISO 8302 (0.4m ² /KW)
Soiling Propensity	ASTM D 6540-00 (4)

Cleaning and Maintenance

Project Floors carpets are extremely durable and require minimal attention to maintain their looks. Treated with appropriate care and attention they will continue to provide years of exceptional service. This information has been prepared to provide you with the minimum requirements that will ensure that your carpets stay in top shape and condition.

ENTRANCE MATS

Project Floors recommends that properly sized entrance mats are placed at all entrances to your carpeted areas. These will help reduce soiling becoming trodden into your carpet. Entrance mats should be cleaned regularly and thoroughly and replaced when they become visibly worn.

CHAIR MATS

Castor chairs used in offices (and similar areas) will reduce the service life of your carpet. We recommend the use of PVC or rubber chair mats.

VACUUMING

Thorough and frequent vacuuming of your carpet on a regular basis will ensure it remains looking new. (See table over page - "Maintenance Guide").

SPOT REMOVAL & SURFACE CLEANING

Immediate spot removal is essential to ensure stains do not set into the carpet. (See "Stain Removal Guide" over page).

Surface cleaning methods include liquid shampoo and dry foam systems, followed by wet vacuum, powder cleaning systems and the like. Surface cleaning is NOT however a substitute for corrective or restorative cleaning in commercial areas.

DETAILED MAINTENANCE PLAN

By keeping to a detailed cleaning & maintenance plan, you help ensure that the carpet pile remains refreshed and soiling is extracted from the carpet.

PROFESSIONAL CLEANING

In a high use or specialized installation, such as (healthcare, nursing homes etc.), a full cleaning and maintenance program should be established with qualified carpet cleaning contractors. In these environments, Project Floors carpets can be cleaned with specialized commercial equipment and cleaners. Hot water extraction used in conjunction with spot cleaners provides the ultimate protection for your carpet.

Project Floors recommends you refer to the Australian & New Zealand Standard for Textile Floor Coverings cleaning maintenance of residential and commercial carpeting (AS/NZS 3733:1995) for further cleaning instructions and information.

Project Floors recommends the following as a guide to cleaning & maintenance of your carpet. The frequency of carrying out the various cleaning methods depends on traffic volumes, carpet construction and health considerations. Refer to the table below for a suggested maintenance programme.

LOCATION	USUAL TRAFFIC VOLUME	SUGGESTED MAINTENANCE PROGRAMME	SUGGESTED FREQUENCY	MINIMUM FREQUENCY
Residential	Light Duty	Full Vacuum Spot & Stain Removal Surface Clean Appropriate or restorative clean	Twice Weekly Daily (ASAP) Every 6 months Annually	Weekly Daily (ASAP) Annually Every 2 years
Offices & Hotel Rooms	Medium Duty	Vacuum - vacuum traffic areas - full vacuum Spot & Stain Removal Surface Clean Appropriate or restorative clean	Twice Weekly 3 times weekly Daily (ASAP) Every 6 months Annually	Weekly Twice weekly Daily (ASAP) Annually Every 2 years
Corridors & Foyers, Hotel Lounges, Ground Floor Shops, Kindergartens, School Classrooms, Hospital Wards	Heavy Duty	Vacuum - vacuum traffic areas - full vacuum Spot & Stain Removal Surface Clean Appropriate or restorative clean	- Daily Daily (ASAP) Every 3 months Every 6 months	Twice Daily 3 times weekly Daily (ASAP) Every 6 months Annually
Restaurants Healthcare Public Areas Corridors, Passageways & Entry/Foyer areas	Very Heavy Duty	Full Vacuum Spot & Stain Removal Surface Clean Appropriate or restorative clean	Daily Daily (ASAP) Monthly Every 3 months	Daily Daily (ASAP) Every 2 months Every 6 months

The table below lists some common stains and recommended cleaning methods. Before carrying out any cleaning method, apply to a concealed section of carpet to ensure it does not affect the adhesive or the carpet. Avoid harsh rubbing. Vacuum to restore the pile, but do not use a stiff brush.

STAIN	TREATMENT GUIDE	KEY
Blood	A C	A Mop up excess as soon as possible with a sponge or cloth.
Burn / Scorch mark	K	
Chewing Gum	I B D C	B Remove surplus with a knife edge or appropriate instrument.
Chocolate	B D C	C Sponge with a solution of carpet shampoo working from well outside the stain in a circular motion towards the center (this avoids spreading the stain). Sponge afterwards with clean warm water and mop excess moisture with a clean dry cloth or sponge. Allow to dry then brush gently with a soft brush. If any stain remains, sponge with a solution of one part bleach to six parts clean water. Thoroughly rinse after treatment.
Cooking Oils	B D C	
Crayon / Colour Markers	B D C	
Drinks (cola, tea, juices, beer etc.)	A C	
Dust / Dirt	Vacuum, then J or C	
Excrement	B C	D Lightly sponge with household dry cleaning fluid and blot. Apply sparingly, as the substance may have an adverse effect on the adhesive.
Grass	C	
Grease	B D C	E Sponge with methylated spirits and blot dry.
Ink (ballpoint)	D E	F Lubricate the stain with glycerin or petroleum jelly.
Ink (fountain)	A C	G Apply nail polish remover. The nail polish remover should not contain lanolin or be of a greasy nature.
Lipstick	B E C D	
Mildew	C	H Sponge with turpentine (or substitute).
Milk	A E	I Freeze with ice cubes and scrape away while cold.
Mud	B C	J Clean with regular extractive carpet cleaner (if possible).
Nail Polish	A G	K Use circular cutter to remove damaged portion. Re-glue new piece into place.
Oil	B D C	
Paint (water based)	A F C	
Paint (oil based)	A H D C	
Sauces	B C D	
Urine	A C	
Vomit	A C D	
Wine	A, add salt, C	

Project Floors recommends the above in good faith, however we cannot be responsible for unsatisfactory results arising from the proposed treatments. Maximum recommended temperature for any cleaning method is 100°C - 110°C.

The following chemical should only be used in a well-ventilated area: - dry-cleaning fluid, turpentine, methylated spirits, white spirits, nail polish remover, or any spotting fluid carrying a red flammable device on its label. Ensure no flame or lit cigarette is nearby. Do not extract flammable liquids with a vacuum cleaner or extraction machine as volatile fumes may ignite in vacuum motors causing an explosion.