



PROJECTFLOORS

YOUR PROJECT, OUR FLOORS

Company Profile

 www.projectfloors.co.nz

 09 444 4165

 salesoffice@projectfloors.co.nz

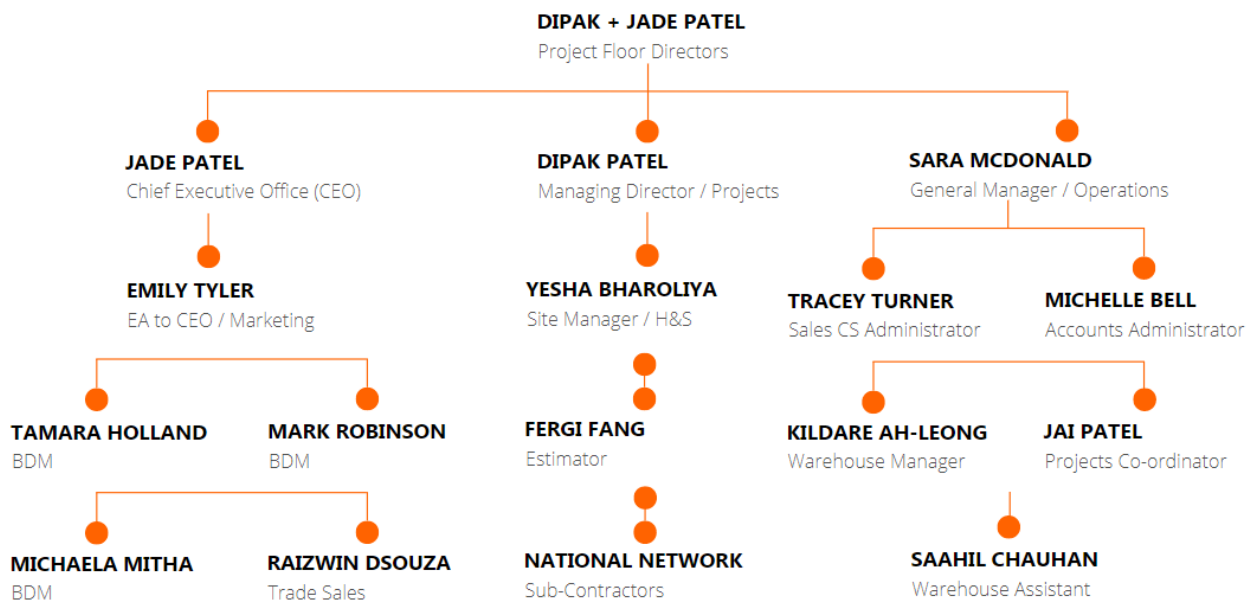
Addresses:

Auckland Design Hub
55A Barrys Point Road
Takapuna
Auckland 0622

Christchurch Design Hub
41 Welles Street
Christchurch
Central 8011

Warehouse
24A Fremlin Place
Avondale
Auckland 1026

PROJECTFLOORS



Leading the way for creative and sustainable solutions in today's marketplace.

Our Values:



PRIORITISING PEOPLE

We love our clients.
We love our team.



PRESERVING THE PLANET

We care for our planet.
We care about our products.



INTENTIONAL INTEGRITY

We mean what we say.
We do what we say.



INSPIRING INNOVATION

We pioneer and create.
We celebrate.

About Us:

For the past 20 years Project Floors has successfully delivered flooring solutions to some of New Zealand's most iconic commercial projects.

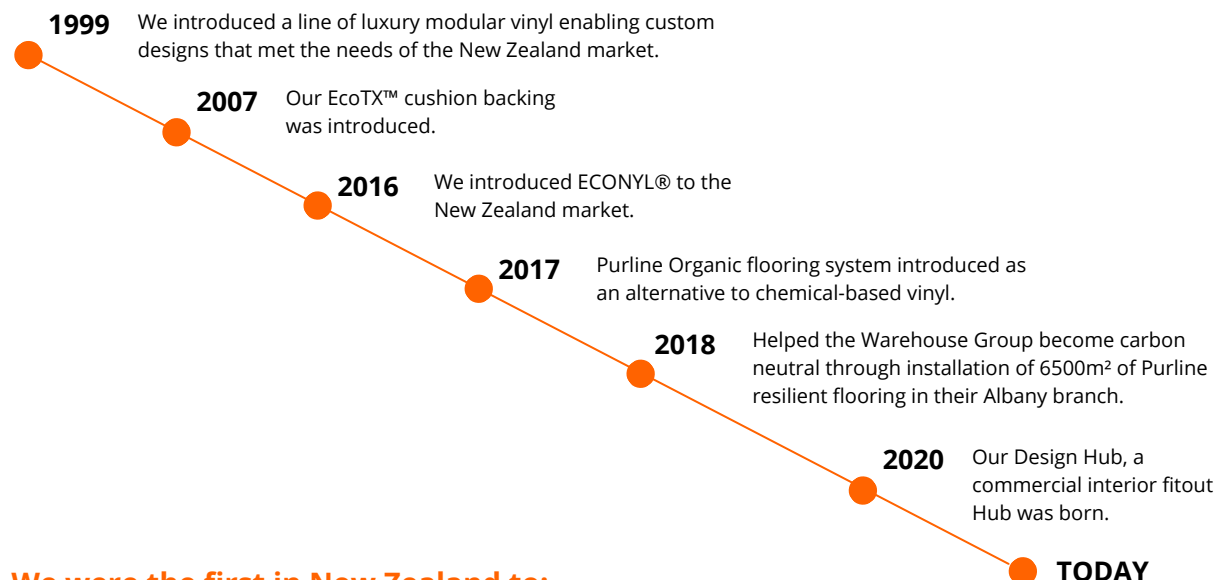
We are equipped to provide the very best solution for all flooring needs with the insight of balancing cost effectiveness, acoustics, visual form and function to create a lasting impression.

As a nationwide flooring distributor, we are also part of a global brand established in Germany and the UK. We work closely with DGL, our New Zealand adhesive manufacturer, and QEP, our carpet tile distributor in Australia, to ensure that we provide our clients with the highest quality products and services.

Furthermore, our presence extends beyond the carpet and flooring industry. Our advisory board members and business mentor, as well as our involvement with the Tony Robbins Foundation and the Ice House, demonstrate our commitment to supporting and building the wider New Zealand business community.

*Project Floors is renowned
for inspiring innovation.*

Our Innovation History:



We were the first in New Zealand to:

- Introduce ECONYL® fibre
- Introduce EcoTX™
- Introduce Purline Organic flooring system
- Go carbon neutral with The Warehouse Group
- Create a Design Hub

We are still thriving post-Covid, with a 60% growth over the last 2 years.

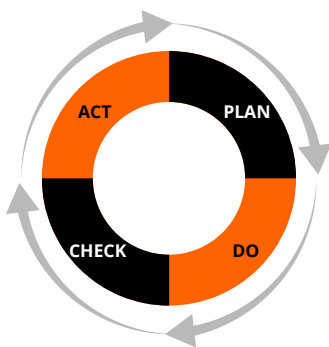
Our Reach:



Our nationwide presence allows us to provide high-quality flooring solutions and services to clients throughout New Zealand.

20 FULL TIME STAFF **3** WAREHOUSES
45 CONTRACTORS **2** DESIGN HUBS

Inspiring Innovation:



Our PDCA process drives PFL's continuous improvement in all our products, services and processes.

When the opportunity to innovate is identified post-contract, PFL follows a process that starts with post-award debrief meetings with stakeholders.

PFL then investigates, researches, prototypes, tests, and conducts market research to identify risks, cost savings, time management, and form and functionality of the product. The concept is then presented to stakeholders for approval, and a cost analysis is undertaken.

Once the concept is approved, PFL receives the program/timelines and manufacturing commences. Shipping, storage, and distribution follow.

Prioritising People: Diversity

As a Māori-owned business, registered with Amotai, operating under the leadership of our female CEO, Jade Patel, and with over seven different ethnicities and cultures represented across our staff, we revel in our diversity, inclusivity and innovation.

Inclusive companies are

1.7x

more innovative

When compared to other companies in the same industries, those that are not only diverse but inclusive are much more likely to be leaders of innovation.

Source: Josh Bersin Research

Companies with high racial + ethnic diversity among their employees outperform their counterpart companies by

35%

Source: McKinsey



Our CEO:



Involved in the industry for 27 years and counting, Project Floors CEO Jade Patel "will never bore of this industry."

She has driven constant innovation to introduce the best products to the New Zealand marketplace and recognises the need for flooring that meets our country's unique cultural and environmental requirements.

Jade loves the creativity of working with top designers, developing new products and bucking trends by staying ahead of the flooring curve.

According to Jade, it's the people that make Project Floors unique. The passion, fun, and desire to go the extra mile for our clients to make their lives easier. One of her favourite things about establishing the company has been creating an environment for others to flourish and fly. "We are a vehicle for others to find success" - along with beautiful floors!

One of the most exciting projects is still the Briscoes/Rebel account. As one of our oldest accounts, it's a privilege to have creative input into their floor finishes. Producing, manufacturing, installing, and seeing the designs come to life annually brings great pride and joy.

Our Products:

Sustainables

With a growing demand for green flooring alternatives, ECONYL® is an eco-friendlier and more ethical source for our carpet tiles. Designers and architects can retain creative freedom while working with a high-quality, high-standard product that is made to last a lifetime—in the best possible way, (6.6 virgin nylon) *and* it doesn't harm the planet.

We also supply PURLINE organic flooring which offers sustainability, design diversity and high performance without the addition of chlorine, plasticisers or solvents.



Carpet Tiles

Project Floors specialises in green-certified floor coverings, which offer real advantages in modern design.

Backed with EcoTX™, our carpet tiles have exemplary acoustic ratings, and are available in an extensive range of colours, patterns, textures, and materials, offering a lot of diversity in design.

Carpets: Residential, Machine Tufted, Hand Tufted, Printed, and Axminster

If you can imagine it, we can produce it with our full bespoke service including distribution and installation.

Our residential nylon carpet fibre is well-known for its durability. It has long been considered to be the most durable synthetic carpet fibre available.

Hand-tufted carpets provide numerous possibilities in terms of shapes and patterns. Among some of our finishing techniques are random shearing, carving, bevelling, recessing and embossing, which may be applied to these surfaces, giving hand-tufted carpets and rugs and touch of elegance.

Project Floors range of printed carpets provides numerous possibilities in terms of design and patterns. Each carpet made is unique in the world and priceless, so the production is strictly manufactured to order, and according to the meticulous instructions of our customers.

Axminster, a traditional woven carpet developed over 250 years ago for royal residences, is now used almost universally in the finest luxury hotels due to its beauty capability of rendering complex, crisp clear patterns and long-term durability. We have more than 20 years of Axminster carpet production and sales experience. Production capacity reaches 3 million square meters per year. Our Axminster carpet has been enjoying a global reputation for our custom made carpet solutions, which we supply to many hotel brands and hotel owners worldwide.

Hybrid

SPC is a Stone Plank Composite that is comprised of natural limestone powder, polymers, and stabilizers. This ridged core provides an incredibly stable base for each flooring plank, combined with the high-performance integrated acoustic underlay.

Hidden beneath the timber look, the high-density stone core provides an extremely resilient hardware base for any style and look. Our Project Floors SPC is available in a variety of styles and custom planks to give you the freedom to explore any aesthetic you can imagine.

- SPC provides a timeless design that won't date with time. Mimicking the beauty of nature, SPC flooring achieves real wood likeness – without all the drawbacks of natural timber.
- SPC offers a water-resistant core and with easy cleaning and maintenance, this extends the life of your SPC flooring and keeps it looking fresh for longer.
- SPC has an integrated acoustic underlay which helps remove the artificial noise associated with other floating floors.
- Project Floors SPC can be installed in almost every area of your home or business including the bathroom and laundry.
- SPC is manufactured with durability in mind with a commercially rated wear layer offering greater scratch resistance in all traffic areas.

Vinyls

Our vinyl flooring is commonly used wherever heavy foot traffic and high stress loads call for a robust, easy-care flooring, whether it be in a store, hotel, restaurant, office, or even in the healthcare sector.

With more than 300 different nature-identical textures we have the largest selection on the market. We produce wood, stone or ceramic effects with loving attention to detail, ensuring they cannot be distinguished from original materials. Our herringbone, chevron and goutline collections also add a special touch for an individualised sense of space.



Adhesives

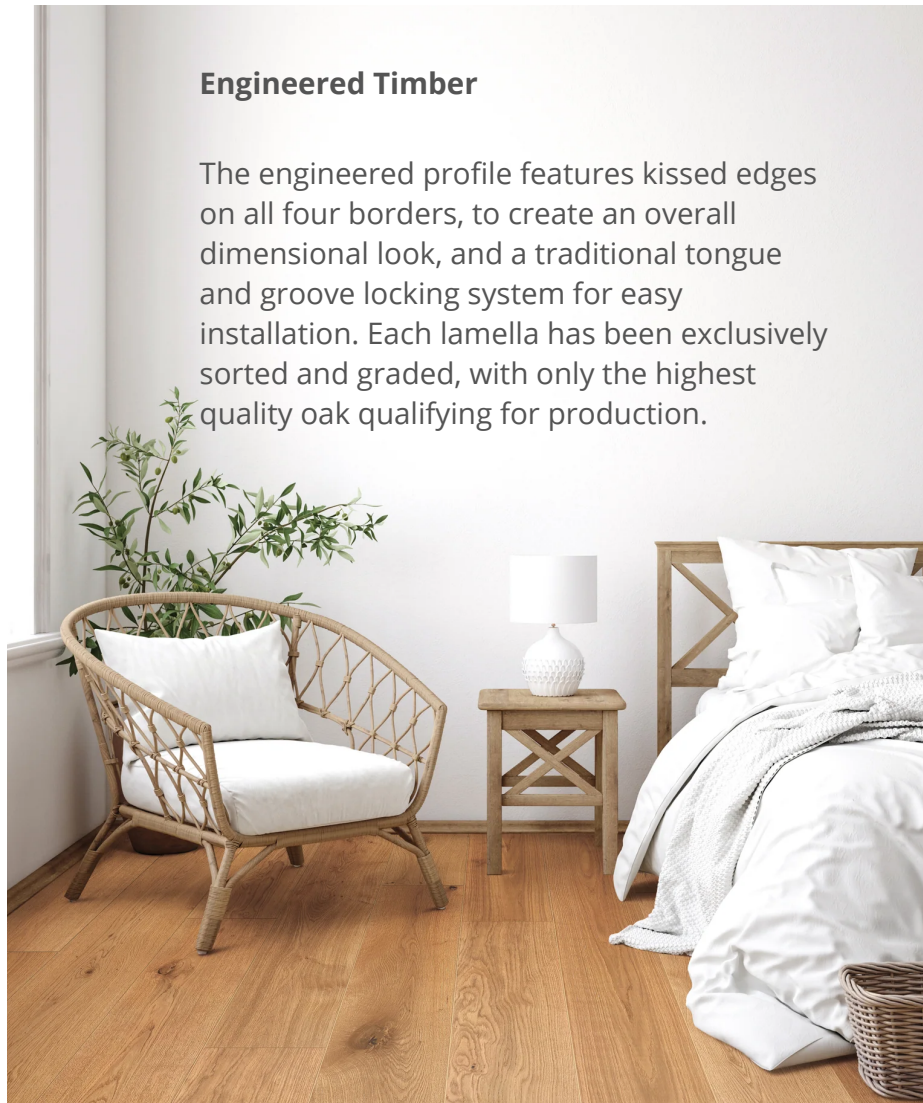
Project Floors recommends the use of Project Stik pressure sensitive carpet tile adhesive for indoor use.

Project Stik is non-hazardous and regulated under NZ5433 for land transportation. The adhesive is free of high levels of VOCs and has no Red List components, and does not require airing to 'off-gas' after installation.

- Solvent-free
- Water-based
- Non-staining acrylic dispersion
- Permanently tacky film for the installation of Project Floors Carpet Tiles
- Allows for uplift and rotation of carpet tiles extending the life of carpet further

Engineered Timber

The engineered profile features kissed edges on all four borders, to create an overall dimensional look, and a traditional tongue and groove locking system for easy installation. Each lamella has been exclusively sorted and graded, with only the highest quality oak qualifying for production.



Company growth:

With over 60% company growth in the last two years alone, Project Floors NZ is on a rapid upward trajectory enjoying our expansion and greater reach across multiple industries.



Our Design Hub

Come and visit us

We want to facilitate further product understanding and specification to support upcoming and exciting projects across the commercial design sector. We offer a condensed but info-packed presentation from our Design Partners of trending materials, innovative products and their best sellers.

Favourably for Architects, individuals and companies join us at the design hub for accredited Continuing Professional Development (CPD) 1-hour sessions, where teams can fine-tune and up-skill existing knowledge about our Design Partner's products.

This a fantastic opportunity for teams to brush up on their technical specification and the "WHY" of utilising head-turning design features in your brief for a point of difference.

Spin your team around our Design Hub, for a 30-45 minute presentation with reputable industry leaders to showcase their latest trends and hot products coming through.



Certifications + Partners



masterspec



nomadtika
ACOUSTIC & DECORATIVE FINISHES



teulo
Your CPD learning platform

STATEMENT ID
INSPIRED DESIGN

Declare.



AD NZ
Architectural Designers New Zealand



AUTEX



the tile depot

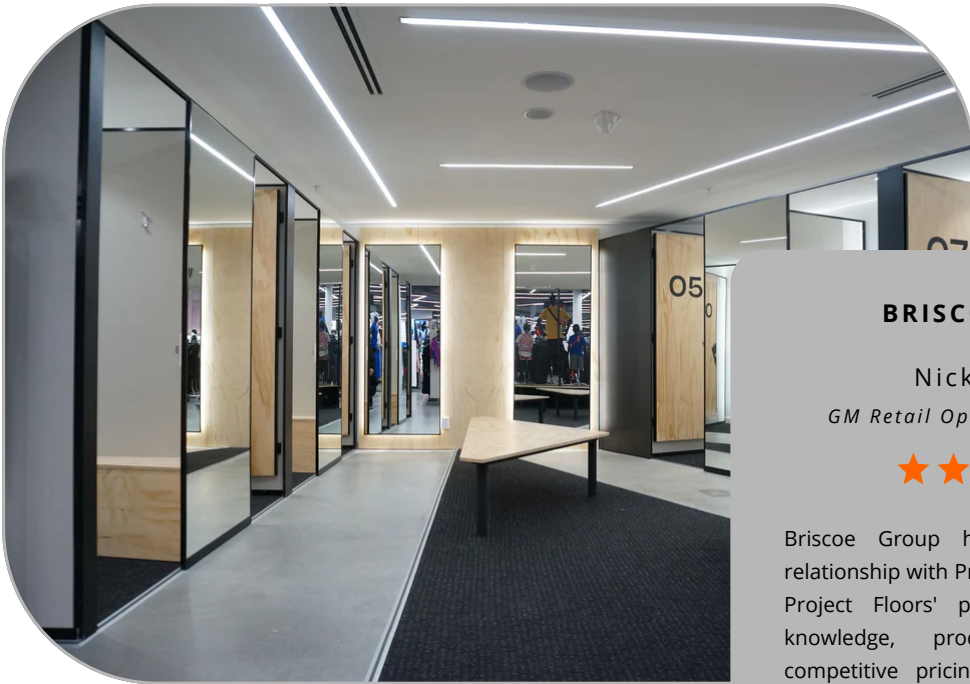
Laminex®

NOVI



Resene
the paint the professionals use

Testimonials



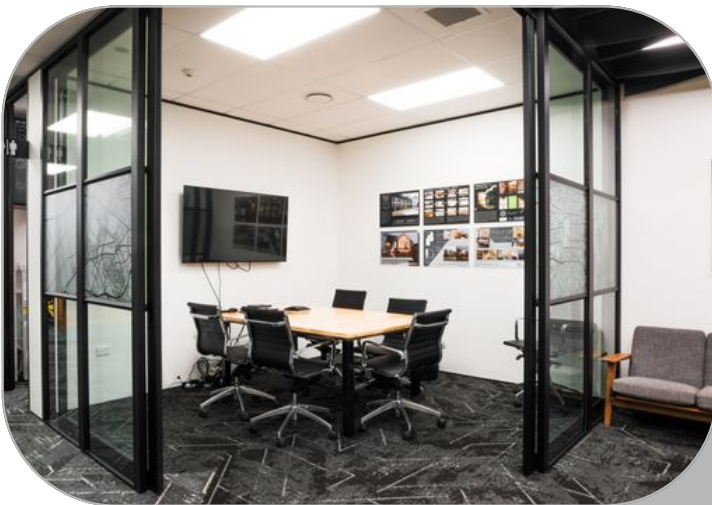
BRISCOE GROUP

Nick Turner

GM Retail Operations + Property



Briscoe Group has enjoyed a strong relationship with Project Floors for 18 years. Project Floors' professionalism, product knowledge, product selection, and competitive pricing have made them a natural fit when determining who we partner with to refurbish and fit out the vast floor areas of our new stores and refurbishment projects.



WORKPLACE INTERIORS



When Workspace Interiors were selected to carry out the refurbishment and fit out of a new premises for a large accountancy firm in South Auckland. Replacement of the carpet and hard flooring was an important aspect of the project.

As a mainly open plan space for 30+ members of the team. Noise considerations were critical at all levels.

A visit with the client to the Project Floors Showroom, really satisfied these criteria by selecting from the Tasman carpet tile range. We got acoustically rated products for this 400sqm job. Also coordinating hard flooring selections from their wide selection of sheet vinyl; for bathroom areas and planks; for the entry and kitchen space in the lunch room.

Our client was hugely impressed by the professionalism and attention given, on our visit by Jade and her team. Making a potentially protracted exercise easy, straight forward and most of all enjoyable.


PROJECTFLOORS

AUCKLAND DESIGN HUB: 55A BARRYS POINT ROAD, TAKAPUNA, AUCKLAND, 0622

CHRISTCHURCH DESIGN HUB: 41 WELLES STREET, CHRISTCHURCH CENTRAL, 8011

WAREHOUSE: 24A FREMLIN PLACE, AVONDALE, 1026

 www.projectfloors.co.nz

 09 444 4165

 salesoffice@projectfloors.co.nz