

PROJECT FLOORS

Your Project. Our Floors.

Canopus Plus

Anti-Slip - Phthalate Free

2018



Special Features



Applications

- Transport
- Airports
- Ramps
- Elevated Corridor access
- Lift areas and entrances
- Kitchens or wet areas
- Industrial locations
- Trains
- Ferries

Product Description

Canopus Plus is an anti-slip flexible vinyl floor covering 2.00 mm thick with silicon carbide particles for a decorative effect and R11 slip resistant properties. The product has a 1.00 mm wear layer and is reinforced with a glass fibre grid for better dimensional stability.

The Sure Clean™ surface treatment replaces wax and polish after installation without reducing the anti-slip properties of the flooring and provides a high level of chemical resistance and ease of maintenance.

Canopus Plus is antifungal and antibacterial, complies with the EN 649 norm (34 - 43) and has a group T wear rating.

Canopus Plus is suitable for transport applications in buses, trains, ships and airplanes. It is also applicable for non-slip performance in most commercial and industrial areas. It is the ideal solution for heavy traffic applications where enhanced slip resistance, durability, hygiene and aesthetic beauty are required.

Canopus Plus is VOC ($\leq 1/2$ Chronic REL) and formaldehyde compliant ($\leq 9.0 \mu\text{g}/\text{m}^3$) according to the CDPH/EHLB/Standard, Method V1.1-2010 (certificate 120316-01).

Canopus Plus[®]

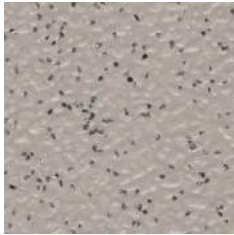
Anti-Slip - Phthalate Free



Safety First

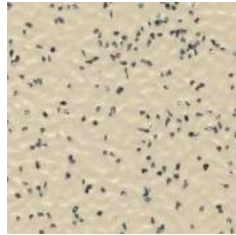
Robust and reliable, Canopus Plus[®] is the safety floor of choice where tough performance and durability are most important. With a R11 slip rating, Canopus Plus[®] is suitable for industrial specification where safety at work is an issue.

Canopus Plus[®] is also widely used for heavy foot traffic applications.



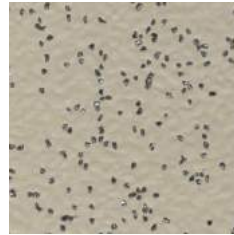
Camel

CPLUS - 12



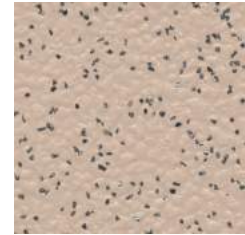
Light Beige

CPLUS - 09



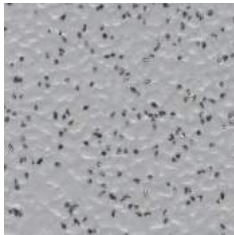
Sand

CPLUS - 10



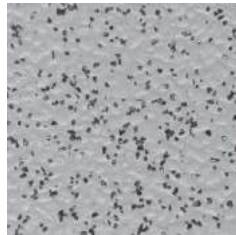
Peach Carnation

CPLUS - 11



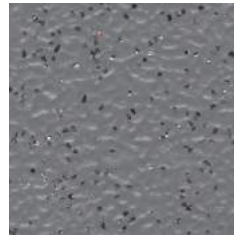
Smoke

CPLUS - 02



Rolling Stone

CPLUS - 01



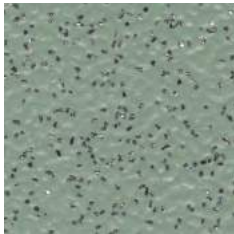
Grey Town

CPLUS - 04



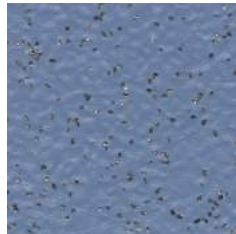
Pewter

CPLUS - 03



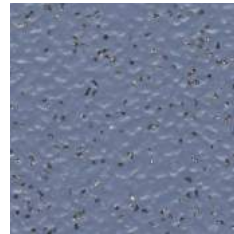
Mint

CPLUS - 14



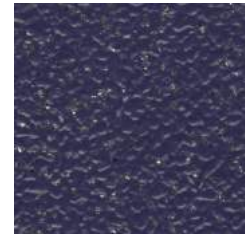
Arctic Blue

CPLUS - 06



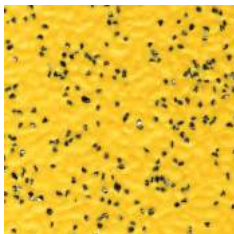
Lucky Sapphire

CPLUS - 07



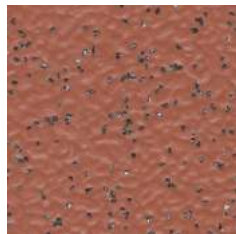
Ocean Blue

CPLUS - 08



Sunny Sands

CPLUS - 16



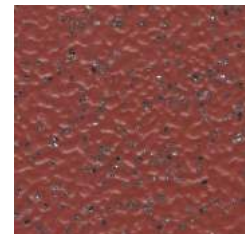
Clay

CPLUS - 17



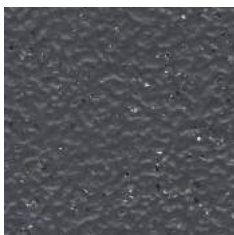
Rosette

CPLUS - 18



Merlot

CPLUS - 13



Iron

CPLUS - 05



Midnight

CPLUS - 15

Matching welding rods are available for every colour.

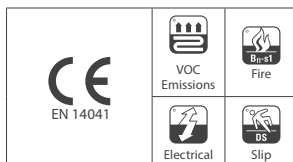
Printed shades may appear slightly different from actual samples.

Canopus Plus [®]

Anti-Slip - Phthalate Free



Characteristics	Standards	Units	Canopus Plus [®]
Phthalate Free			Yes
Indoor Air Quality	CA Section 01350 (≤ 0.5 mg / m ³)	Floorscore Certified (SCS - FS - 04547)	Yes
	ISO 16000-6, TVOC after 28 days	µg/m ³	< 10 (Fully compliant)
Description			
Type of floor covering	EN 13845 EN 13553	Classification	Safety Vinyl Flooring
General Performance	ISO 10874 - EN 685		34: Very Heavy Commercial 43: Heavy Light Industrial
Usage / Wear Resistance	BS EN 649	Group	T (≤ 2 mm ³)
Special Treatment			Anti-slip surface with silicon carbide granules. SureClean™
Overall Thickness	ISO 24346 - EN 428	mm	2.00
Weight	ISO 23997 - EN 430	g/m ²	3400
Sheet Size	ISO 24341 - EN 426	m (width)	2
		m (length)	20
		m ² (surface area)	40
Castor chair test	ISO 4918 - EN 425	Type of use	Continuous
Slip resistance	EN 13845	Wear Resistance Rating	ESf & ESb (≤ 10% particles lost over 50,000 cycles)
	DIN 51130	Ramp Test	R 11
	BS 7976 - 2	Wet Pendulum Test	36+ (Low Slip Potential)
	AS 4586 - 2013 Appenix A		P4
	EN 13893 ASTM D2047	Coefficient of friction	DS (< 0.30) Pass (0.70 Avg)
Dimensional stability	ISO 23999 - EN 434	%	≤ 0.40
Flexibility	ISO 24344 - EN 435	20mm mandrel	< 20
Seam Strength	ISO 16906	N/50mm	Pass
Residual indentation	ISO 24343 - 1 - EN 433	mm	≤ 0.10
	ASTM F970	psi	800
Colour fastness to light	EN ISO 105 - B02	Degrees	≥ 6
	ASTM F1515	ΔE ≤ 800 after 300 hours (colour change)	Pass
Static electrical propensity	EN 1815	kV	< 2.0
Thermal resistance	EN 12667	m ² k/W	Approx 0.01m ² k/W (suitable at 27°C)
Heat Stability	ASTM 1514	ΔE ≤ 0.80 (colour change)	Pass
Reaction to fire	EN ISO 9239-1	kW/m ²	≥ 8
	EN ISO 11925-2		Pass
	EN 13501-1 : 2007+A1	Class	Bfl - S1
	ASTM E 648	Type	1
Smoke density	ASTM E 662	Dm	< 450
Stain & chemical resistance	ISO 26987 - EN 423	Index	0 (Excellent resistance)
Maritime usage	IMO RES A 653 (16)		Annex 1 Part 2 (Smoke & Toxicity)
	IMO MSC 61 (67)		Part 5 (Spread of Flame) and Annexure 2
	Marine Equipment Directive		1121



AWTA PRODUCT TESTING

Australian Wool Testing Authority Ltd - trading as AWTA Product Testing
A.B.N. 43 006 014 106
1st Floor, 191 Racecourse Road, Flemington, Victoria 3031
P.O. Box 240, North Melbourne, Victoria 3051
Phone (03) 9371 2400 Fax (03) 9371 2499

TEST REPORT

CLIENT : QEP AUSTRALIA PTY LTD
2 DUNLOPILLO DRIVE
DANDENONG VIC 3175

TEST NUMBER : 7-591057-AV
ISSUE DATE : 21/05/2013
PRINT DATE : 23/05/2013

SAMPLE DESCRIPTION Clients Ref: "Canopus Plus"
Vinyl sheet floorcovering
Approximate thickness: 2mm
Colour: Black

Material Specification:
Nominal Composition: Vinyl (PVC)
Nominal Total Mass: 3135g/m²

ASISO 9239.1-2003
Part 1

Reaction to Fire Tests for Floorings
Determination of the Burning Behaviour
using a Radiant Heat Source

Date of sample arrival: 29/04/2013

Date tested: 20/05/2013

Results: CHF (Critical Heat Flux / Critical Radiant Flux)

Non directional	1	2	3	Mean	
	9.8	9.8	9.3	9.6	kW/m ²

Non directional	1	2	3	Mean	
	189	198	297	228	% min

Observations: Blistering

Note: Sample was conditioned in accordance with BSEN 13238-2001 at a temperature of 23+/-2degC and Relative Humidity of 50+/-5% for a minimum of 48 hours prior to testing

Each specimen was adhered to a substrate of 6mm thick fibre reinforced cement board using Roberts Acrylic 656 adhesive and clamped prior to testing

The test results relate to the behaviour of the test specimens of a product under the particular conditions of the test, they are not intended to be the sole criterion for assessing the potential fire hazard of the product in use

200163

1

(END OF REPORT)

PAGE 1

© Australian Wool Testing Authority Ltd
Copyright - All Rights Reserved



This Laboratory is accredited by the National Association of Testing Authorities, Australia, for:
-Chemical Testing of Textiles & Related Products : Accreditation No. 983
-Mechanical Testing of Textiles & Related Products : Accreditation No. 985
-Heat & Temperature Measurement : Accreditation No. 1356

This document is issued in accordance with NATA's accreditation requirements. Samples, and their identifying descriptions have been provided by the client unless otherwise stated. AWTA Ltd makes no warranty, implied or otherwise, as to the source of the tested samples. The above test results relate only to the sample or samples tested. This document shall not be reproduced except in full and shall be rendered void if amended or altered. This document, the names AWTA Product Testing and AWTA Ltd may be used in advertising providing the content and format of the advertisement have been approved in advance by the Managing Director of AWTA Ltd.



Safety Vinyl Care and Advice

CLEANING AND MAINTENANCE GUIDE

CLEANING GUIDE

INITIAL CLEAN AT HAND OVER

An initial site cleaning is always carried out before using new flooring. Always protect the floor with hardboard or similar during the construction period.

Lightly soiled floors: Vacuum, sweep or damp mop the area to remove loose dirt and building dust. A combined machine with brushes and white/yellow floor pads is very effective on large, open areas. Use a neutral detergent, pH 7-9. When necessary, dry buff at high speed using white/yellow floor pads.

Severely soiled floors: Remove loose dirt and building dust. Then scrub the floor with a scrub-bing machine and red floor pads. If there is a lot of building dust, use a detergent with pH 5-7. Rinse with warm water. Dry buff at high speed using red floor pads.

DAILY CLEANING

Dry or damp mopping suffices for daily cleaning

CLEANING WITH CHEMICALS

If wet-cleaning is necessary, use a neutral floor-cleaner. Wet rooms may necessitate occasional cleaning with acidic cleansing agents (pH 3-5) in order to remove residual lime and soap Warning: Always follow dosage instructions carefully!

MACHINE CLEANING

If wet-cleaning is necessary, use a neutral floor-cleaner. Wet rooms may necessitate occasional cleaning with acidic cleansing agents (pH 3-5) in order to remove residual lime and soap Warning: Always follow dosage instructions carefully!

PREVENTIVE MEASURES

Stop dirt right at the door, 85% of it enters a room this way. There is effective entrance barrier matting to bind dirt from people's shoes. Remember that grit and sand particles are the number one cause of damage.

Safety Vinyl Care and Advice

CLEANING AND MAINTENANCE GUIDE

MAINTENANCE GUIDE

DRY BUFFING

Dry buffing is an efficient method used to remove traces of scuff marks and to re-store a floor's surface once wear has become visible. It is best to dry-buff right after you have machine-cleaned the floor. Dry buffing limits renewed soiling. Be sure to use the correct type of pad. Best results are achieved at approximately 1000 rpm and using a red buffing pad. Dry-buff frequently according to the amount of wear.

MACHINE CLEANING

Heavy wear and soiling necessitates machine-cleaning. Apply the cleaning solution (a fairly strong cleansing agent added to water, pH 10-11) to the flooring and allow to penetrate for a few minutes. Clean the flooring using the machine and a red cleaning pad. Vacuum away the dirty water immediately afterwards. Rinse with clear water. Allow the flooring to dry and then dry-buff according to the maintenance instructions above. Do not treat the flooring with polish!

REMOVING MARKS AND STAINS

Treat marks and stains immediately. Use white/red nylon pads with methylated spirits, cleaning spirit or neutral detergent. Wipe afterwards with clean water.

GENERAL ADVICE

1. Resilient floors are damaged by solvents.
2. Wipe up any split oil immediately because it may damage the surface.
3. Black rubber wheels and rubber feet can discolour the floor.
4. All chair legs must have protective feet.
5. Remember that light colours need to be cleaned more frequently.