

*Installation of*  
Quiltmagine Pro  
Online Update

**NOLTING**  
LONGARM QUILTING MACHINES



Copyright December 20, 2017  
Jim Bagley, GraceWood, Inc  
(Reproduction Prohibited)  
Version 1.1

# Preparing to install the On-line Update

Before beginning the update process, please do the following:

Close all other programs before launching your software.

Insure that you are connected to the internet. If you have been running in Airplane Mode, you will need to turn this off. If you have not been connected to the internet for a while, you will want to let the computer remain connected for a period of time allowing Windows to complete it's updates. Keep selecting to Restart your computer until it no longer says Update and Restart.

Unplug the USB from the computer\tablet. If the program asks you to run in Simulation Mode say yes. The update must be done in Simulation Mode.

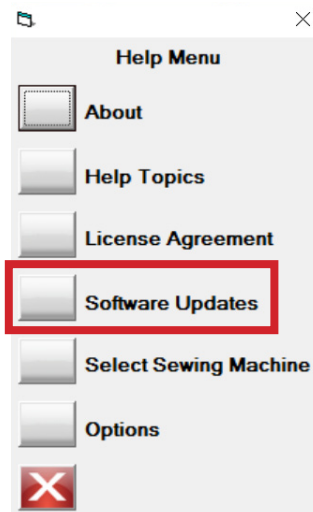
The computer does not have to be plugged in, but if your battery is low make sure the computer/tablet is connected to power.

# Online Update to Quiltmagine Pro

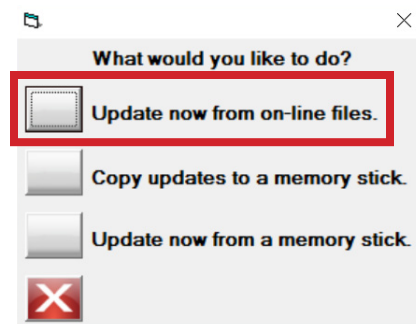
From the main window of the program, click on **Help**.



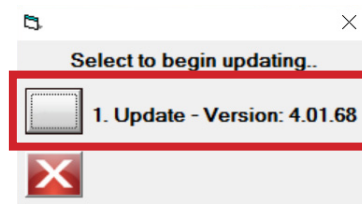
From the **Help Menu** window, click on **Software Updates**.



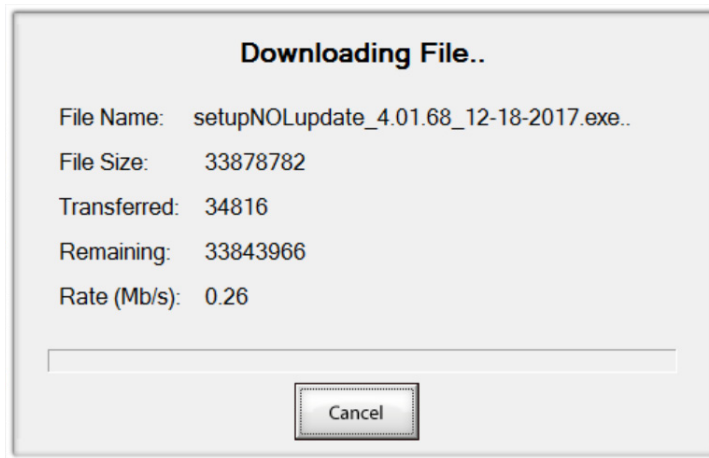
From the **What would you like to do?** window, click on **Update now from on-line Files**.



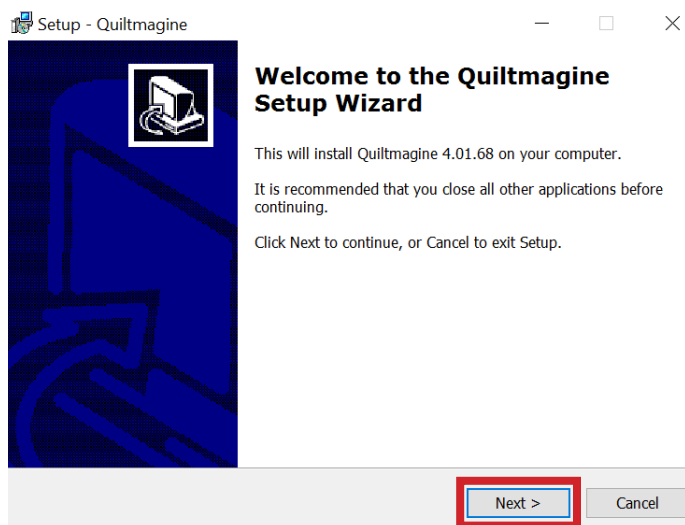
From the **Select to begin updating...**  
Click on **1. Update - Version 4.01.68**



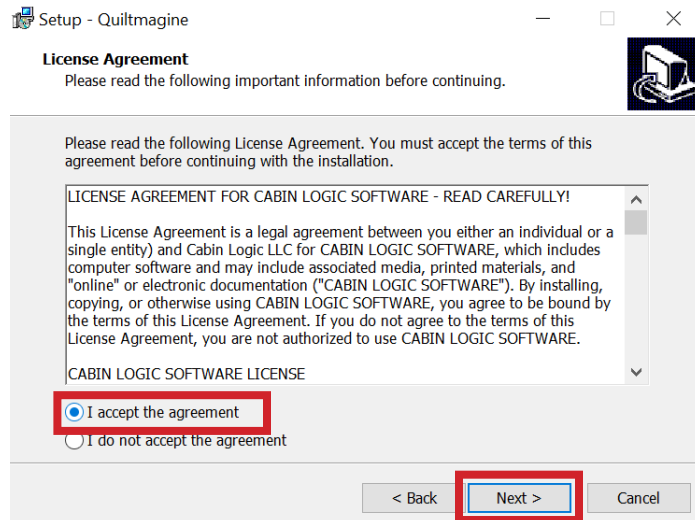
The **Downloading File...** window  
will automatically close once the  
file has completed downloading.



On the **Welcome to the  
Quiltmagine Setup Wizard**  
window click on **Next >**.

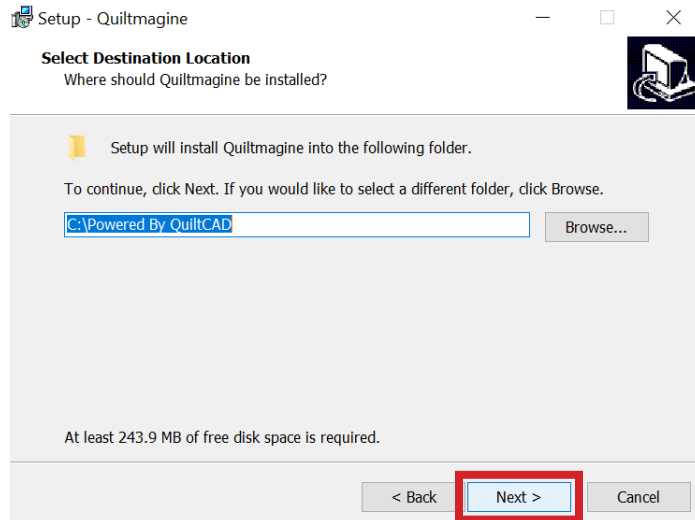


On the **License Agreement** window click on **I accept the agreement** and click **Next >**.

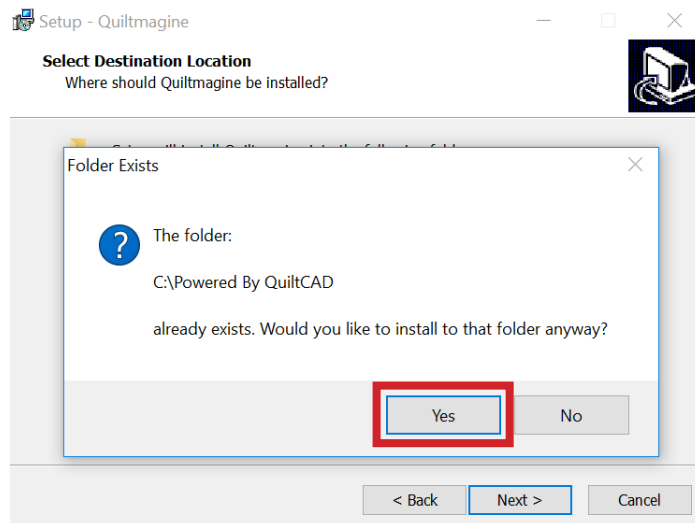


On the **Select Destination Location** window.

\* **Do not change the default destination location.**

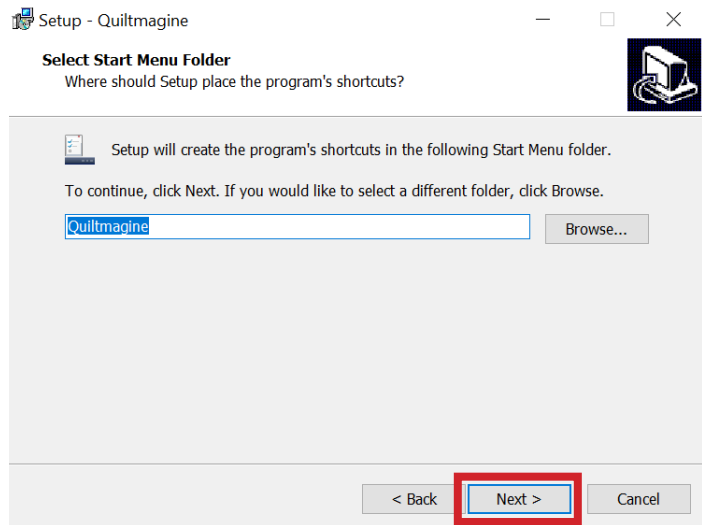


On the **Folder Exists** window click **Yes**.

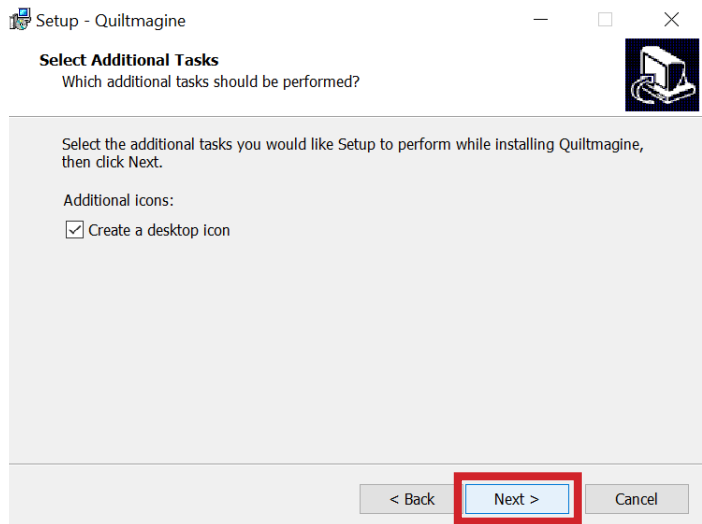


On the **Select Start Menu Folder** window \* and click **Next >**.

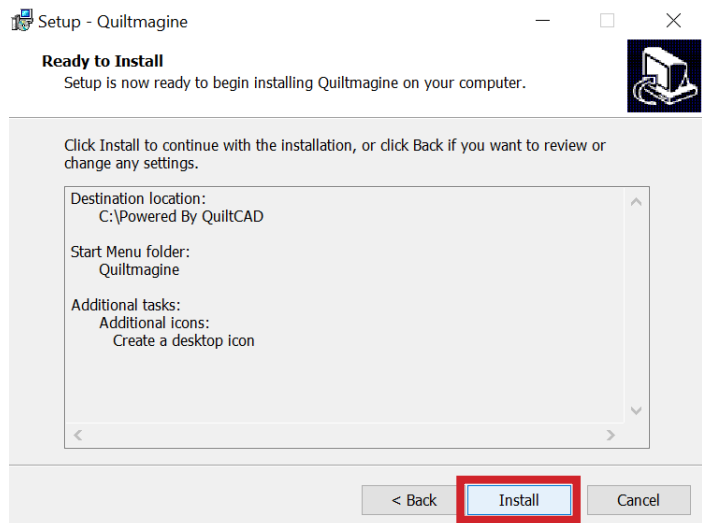
\* **Do not change the default Start Menu Folder name.**



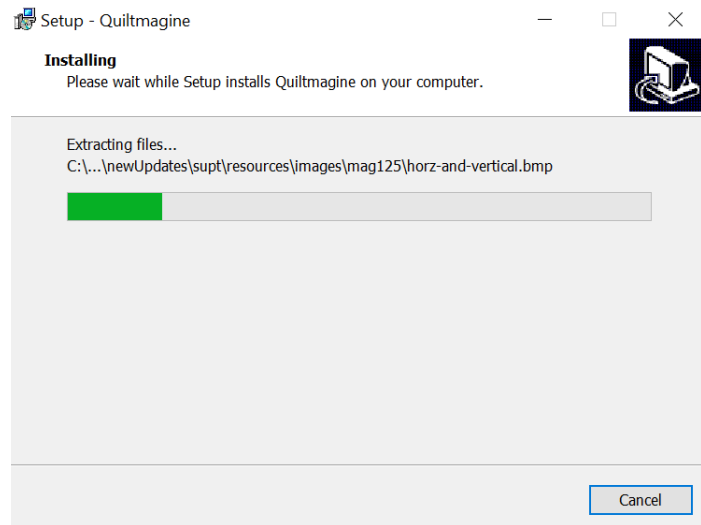
On the **Select Additional Tasks** window leave the **Create a desktop icon** checked and click **Next >**.



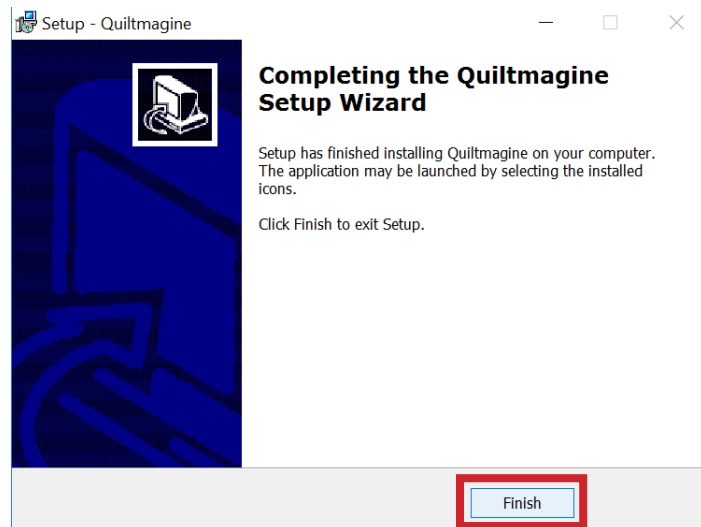
On the **Ready to Install** window click **Install**.



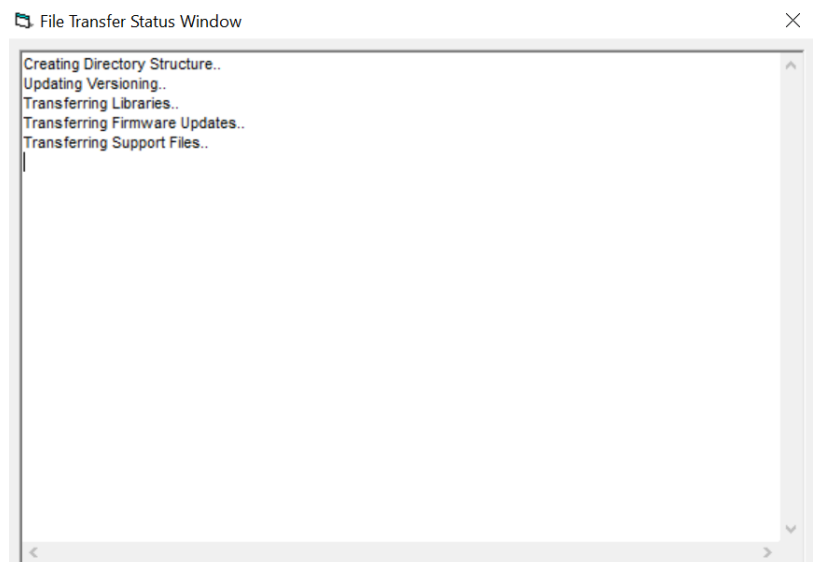
The **Installing** window will show the progress of the installation.



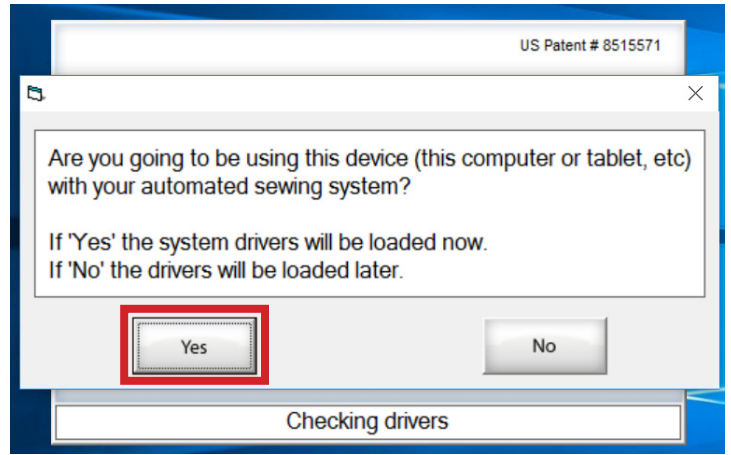
On the **Completing the Quiltmagic Setup Wizard** window click on **Finish** to exit Setup.



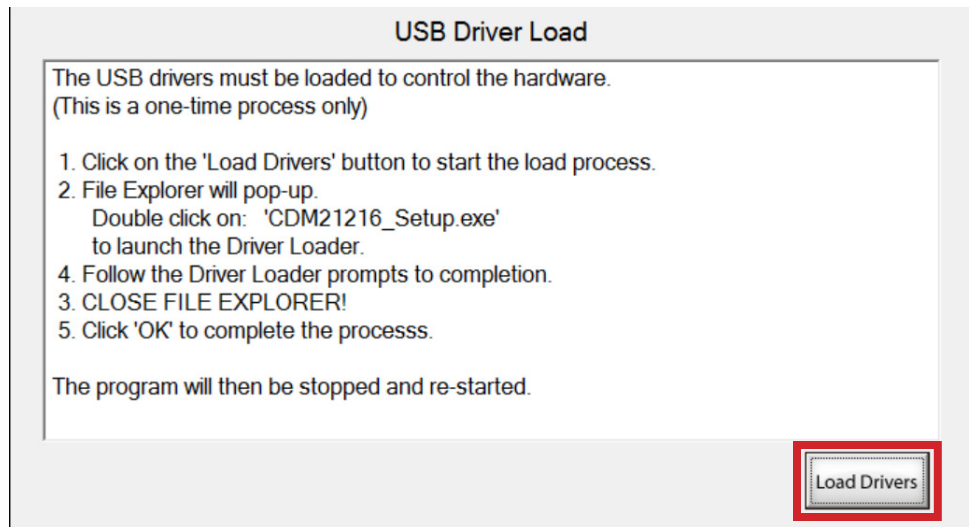
Double click the start icon on your desktop to launch the program, the installation of files and directories will complete.



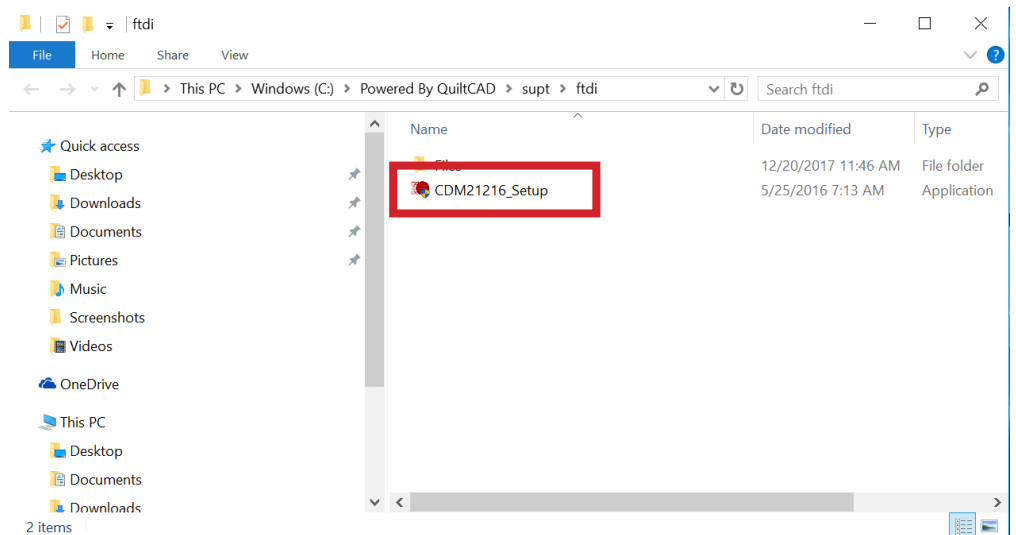
Next you will be prompted "Are you going to use this device with your automated sewing system?" Click on **Yes**.



On the **USB Driver Load** window click on **Load Drivers**.

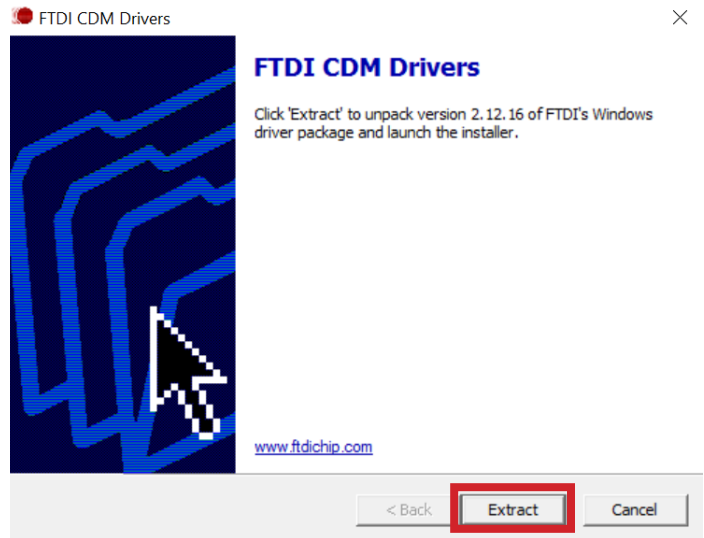


Double click on the **CDM21216\_Setup** file.

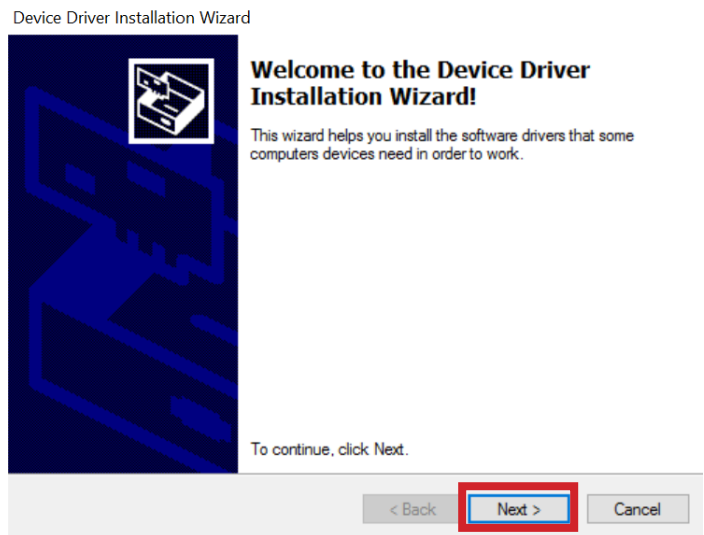




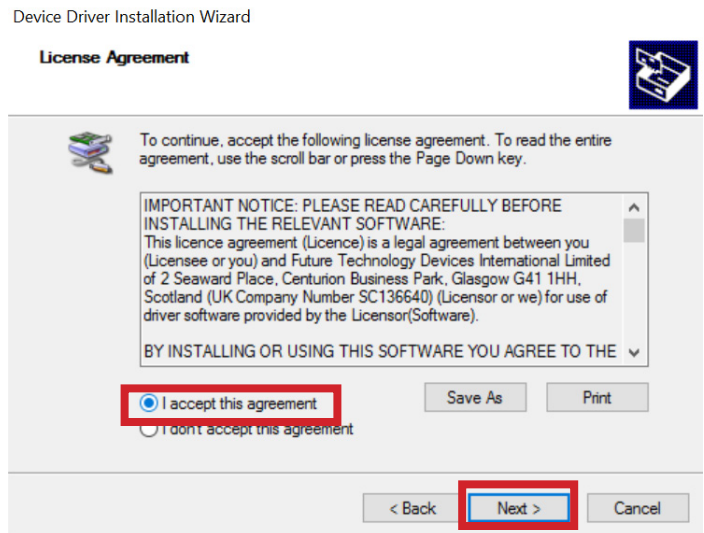
On the **FTDI CDM Drivers** window click on **Extract**.



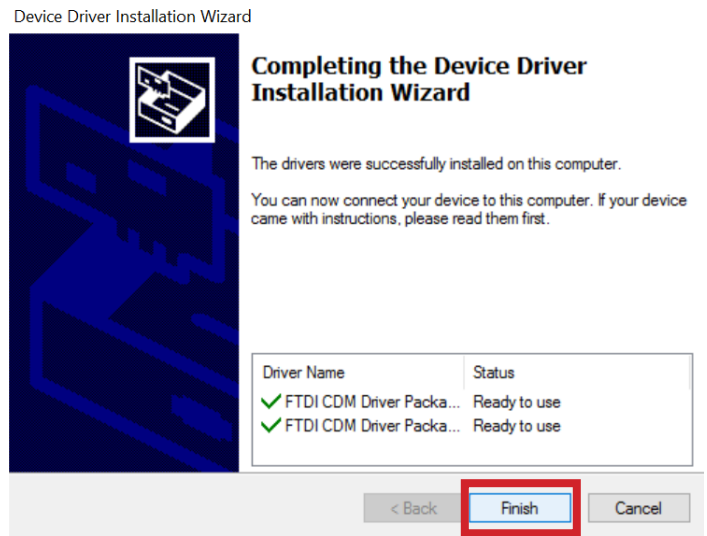
On the **Welcome to the Device Driver Installation Wizard!** window click on **Next**.



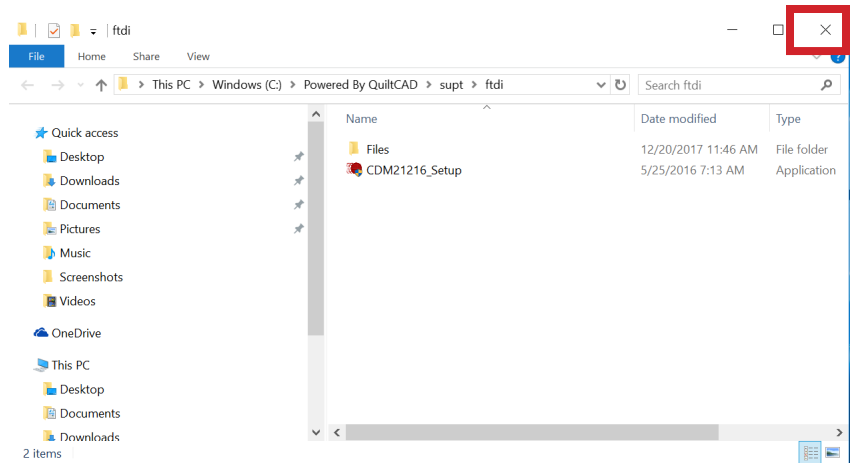
On the **License Agreement** window click on **I accept this agreement** then click **Next**.



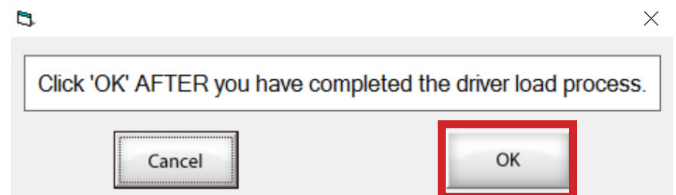
On the **Completing the Device Driver Installation Wizard** window click on **Finish**.



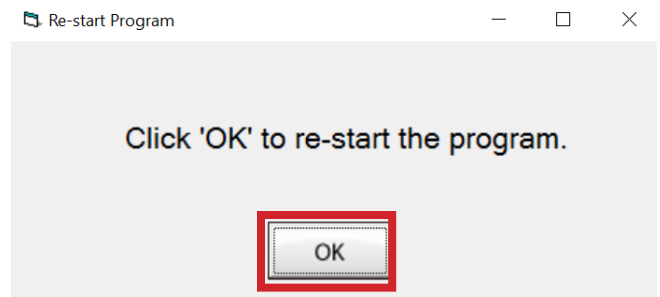
Click on the **X** in the upper right hand corner of the File Explorer.



Click on **OK**.



On the **Re-start Program** window click on **OK**.



You will need to Register your Software within the time limit defined.

Software Registration Phone-In Form

×

### Register Your Software Now

Time remaining to register: 30:14:48:11 (d:h:m:s)

You must register your software before the above time counts down to zero. If you fail to register within this time period, the software will revert to Demonstration mode.

We encourage you to do this as soon as possible. The registration process only takes a few minutes.

(If you choose to register later, you can still run your fully functional software until the time expires.)

Do you want to register now?

Version  
4.01.68

Customer Service: 800-264-0644

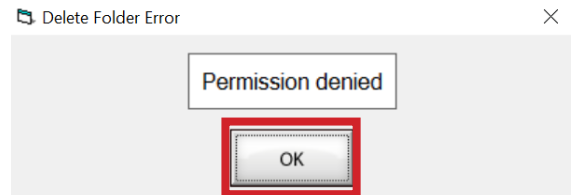
No

Yes

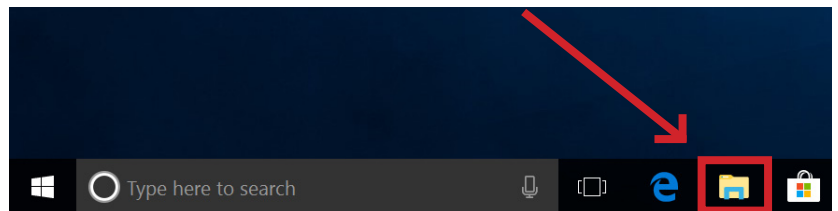
## Troubleshooting

Depending up the version of Windows you are running it is possible you may encounter an error that looks like this:

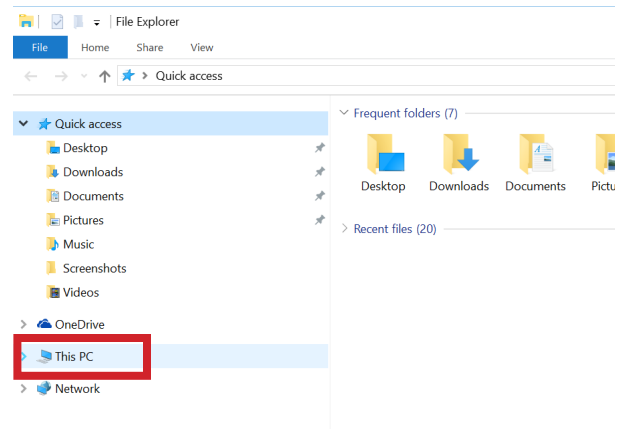
If you do get a message like this, click ok. This should close the program installer.



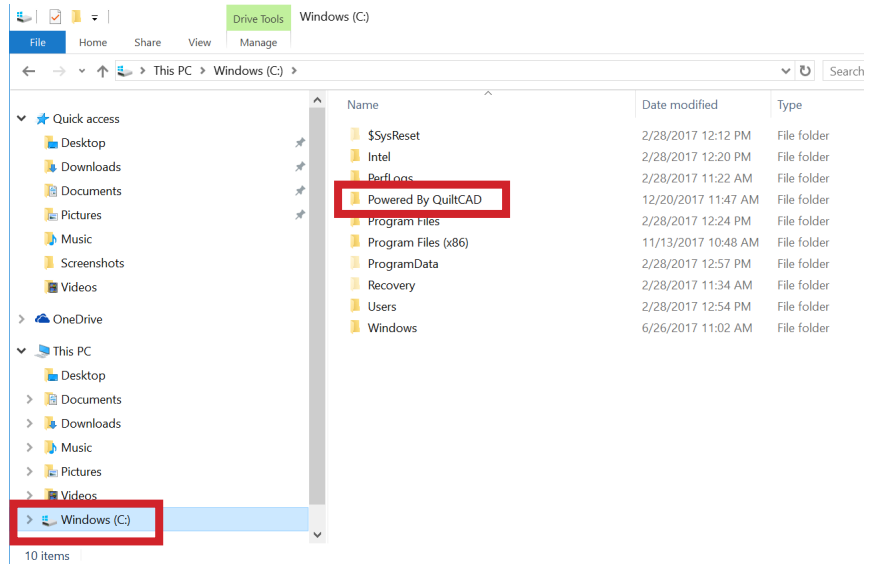
To restart the installation, click on the File Explorer icon on your taskbar:



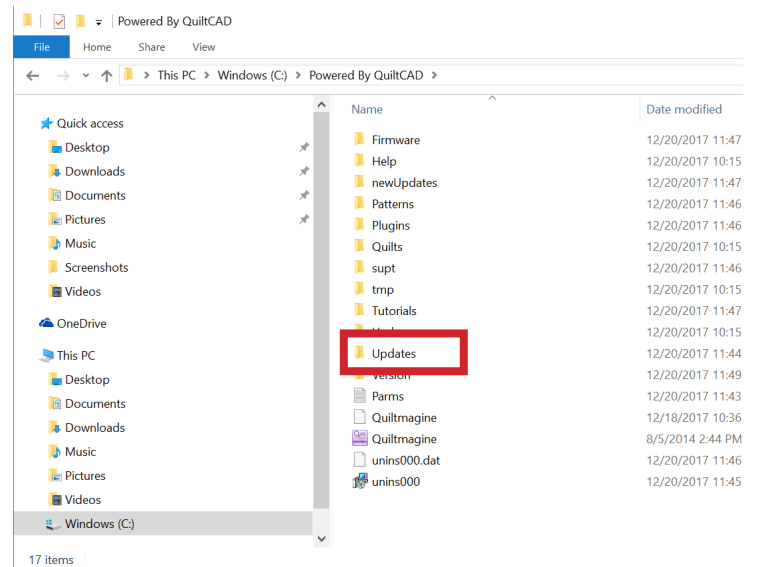
This will open File Explorer. Locate **This PC** and click.



Locate the **(C:) Drive** and click. Double click on **Powered By QuiltCAD**.



Locate the **Updates** directory and double click.



Double click on the **setupNOLupdate\_4.01.68\_12-18-2017** file. Return to page 3 and proceed with the installation again.

