

*Registering*  
Quiltmagine Pro

**NOLTING**  
LONGARM QUILTING MACHINES



Copyright December 20, 2017  
Jim Bagley, GraceWood, Inc  
(Reproduction Prohibited)  
Version 1.1

# Registering Quiltmachine Pro

If you have not registered your software you will see this. You can choose not to register and you will have 30 days to do so, or you can opt to complete the registration process now.

If you want to register now click on **Yes**.

Software Registration Phone-In Form

**Register Your Software Now**  
Time remaining to register: 31:11:03:49 (d:h:m:s)

You must register your software before the above time counts down to zero. If you fail to register within this time period, the software will revert to Demonstration mode.

We encourage you to do this as soon as possible. The registration process only takes a few minutes.

(If you choose to register later, you can still run your fully functional software until the time expires.)

Do you want to register now?

Version **4.01.68** Customer Service: 800-264-0644

No Yes

On the **Get Product Information** window if you already see a product key here, click **Next**. If you do not see a **Product Key** click on **Get Product Key from Thumb Drive**.

Software Registration Phone-In Form

**Get Product Information**

1. Product Key	Code	Product Description

Get Product Key From Thumb Drive Enter Card Activation Key

First, we need to collect some software product information. (If current, click 'Next'.)

If you have thumb drives besides the drive the software was installed from, click: 'Get Product Key from Thumb Drive'.

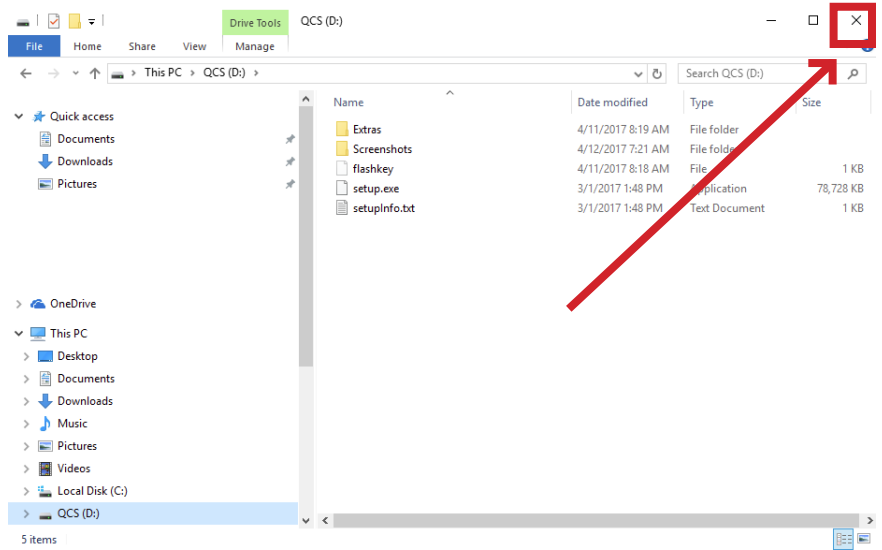
If you have Card Activation Keys that have not been submitted before, click: 'Enter Card Activation Key'.

Click 'Next' when you have finished.

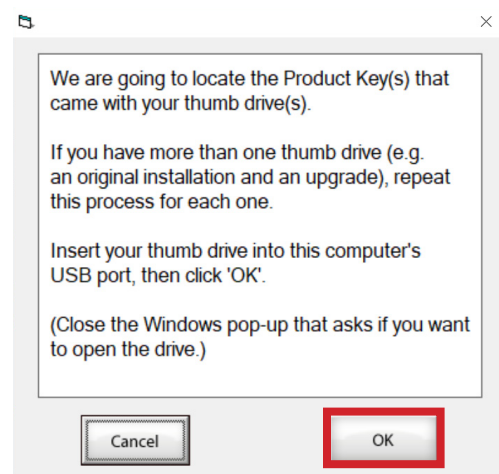
Version **4.01.68** Customer Service: 800-264-0644

Previous Next

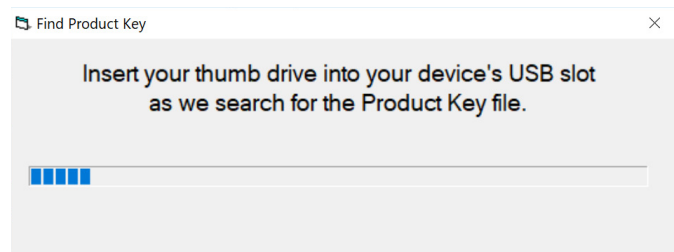
When you plug in your USB thumb drive, Windows may open an File Explorer window to show the contents of the drive. Click on the **X** in the upper right hand corner and close this window.



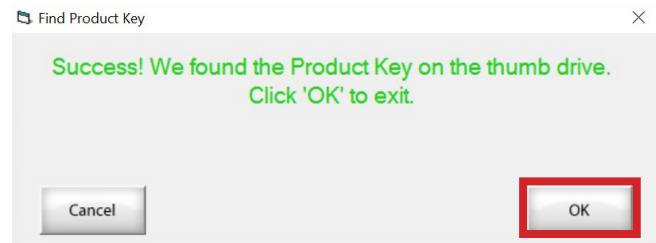
When you see this window, make sure your USB thumb drive is inserted in the USB drive on your PC/Tablet, then click **OK**.



The Find Product Key will show progress while the program is searching your USB thumb drive.



Once the program has located your Product Key on your thumb drive you will see this, click **OK**.



On the **Get Product Information** window you will see that it has populated the **Product Key, Code** and **Product Description**. Click **Next**.

Software Registration Phone-In Form



### Get Product Information

1. Product Key	Code	Product Description
NOL BMX3L BUDJA HQX3A	FUL	Quilter's Creative Touch (Foundation)

First, we need to collect some software product information. (If current, click 'Next'.)

If you have thumb drives besides the drive the software was installed from, click: 'Get Product Key from Thumb Drive'.

If you have Card Activation Keys that have not been submitted before, click: 'Enter Card Activation Key'.

Click 'Next' when you have finished.

Version  
4.01.68

Customer Service: 800-264-0644

Previous

Next

You will now see the **Device Information** window click **Next**.

Software Registration Phone-In Form



### Device Information

2. Device Name:

3. Device ID:

Now let's get a little information about this device your software is running on.

The 'Device Name' describes this computer (or tablet). If you ever need to call us for technical support, you can easily identify this device for us by its name. We provide the default name, however, you can re-name it to something else if you wish.

The 'Device ID' was created for registration purposes.

Click 'Next' to continue..

Version  
4.01.68

Customer Service: 800-264-0644

Previous

Next

### Almost There..

If you have entered all of your software product information, you are just about ready to submit it to us.

If online, you can email us the information. If not, call us to register over the phone.

Select which submission option you prefer.

	
---	---

If you wish to register later, click 'Close' to exit. Your information will be saved.

Version  
4.01.68

Customer Service: 800-264-0644

Previous

Close

On the **Almost There...** window click on **Email It!**

### Get Email Information

4. First Name:	<input type="text"/>
5. Last Name:	<input type="text"/>
6. Email Address:	<input type="text"/>
7. Security Question:	What is your mother's maiden name? <input type="text"/>
8. Answer:	<input type="text"/>

Carefully and accurately enter your name and email address. Select and answer a security question.

Click 'Next' to continue..

..which will open up a browser window for you to review, then submit.

Version  
4.01.68

Customer Service: 800-264-0644

Previous

Next

On the **Get Email Information** window fill out all of the fields. Click **Next**.

# Quilter's Creative Suite Software

## Product Registration

Review the information below. If you need to fix anything, close the browser then work your way back through the registration process.

**Name:** Jane Customer  
**Email:** jcustomer@internetaccess.com  
**Device Name / ID:** HOME01 / XX0X  
**Security Question:** What is your mother's maiden name?  
**Answer:** mama

XXX XX0X0 XXX0X XXXXX

If everything is correct, click 'Submit'.

Submit

www.cabinlogic.com



# Quilter's Creative Suite

## Thank You!

You will shortly receive an email from cabinlogic.com. Follow its instructions to continue the registration process.

If you do not receive this email, make sure you entered your email address correctly and that you are 'online'. Be sure to re-submit your information.

You may need to check your 'Junk' folder, in case the response was routed there.

(You may now close this browser)

www.cabinlogic.com



Reply Reply All Forward

JC

register@cabinlogic.com Jane Customer  
jcustomer@internetaccess.com QuiltCAD Registration

Fri 4/28

Retention Policy Junk Email (30 days) Expires Never

### Registration Info

Jane,

Thank-you for registering your software. Your next step is to REPLY to this email so we can authenticate you as our customer, then process your registration information. To properly reply:

1. Select the REPLY option in this email.
2. In the Message area, type-in 'Registration Info'.
3. Click SEND. (typically there will be a 'Send' button)

Once you have replied, you will receive your Access Key and Activation Key within one business day, via email. The email will instruct you how to use these keys to complete the registration process.

Note: This email is for registration purposes only. Call Customer Service if you have any questions or concerns.

Best Regards,

Your Customer Service Team  
Hours 8:00 AM - 5:00 PM MST (M-F)  
(800) 264 0644

PS: DO NOT DELETE OR CHANGE any of the information below, in your reply to us.

```
<ACTION>reply</ACTION>
<FIRSTNAME>Jane</FIRSTNAME>
<LASTNAME>Customer</LASTNAME>
<EMAIL>jcustomer@internetaccess.com</EMAIL>
<DEVICENAME>HOME01</DEVICENAME>
<DEVICEID>XX0X</DEVICEID>
<VERSION>4.01.40</VERSION>
<PRODUCTKEYS>XXX XX0X0 XXX0X XXXXX</PRODUCTKEYS>
<ACTIVATIONKEY>XXX XX0X0 XXX0X XXXXX</ACTIVATIONKEY>
<QUESTION>What is your mother's maiden name?</QUESTION>
<ANSWER>mama</ANSWER>
<TIMEDATE>4/28/2017 8:47:12 AM</TIMEDATE>
```

A browser window will open and you should see this web page with your **Product Registration** information. Click on **Submit**.

The browser will now direct to this page, you may now close your browser window.

You will now need to check your email for a message from **register@cabinlogic.com** make sure you check your 'Junk' or 'Spam' folder. To reply simply type **Registration Info** in the body of the reply, and hit send.

## Email Submission Summary

Once you have replied to the registration email, click on **Close**.

If you have successfully done the following..

- Entered the registration information correctly,
- Submitted it from the browser,
- Replied to us through with your email.

..you may now click 'Close'.

Be sure to check your email for the Access and Activation Keys, over the next day.

If you need to make any corrections, click 'Previous', and step back through the information gathering process and make any needed fixes.

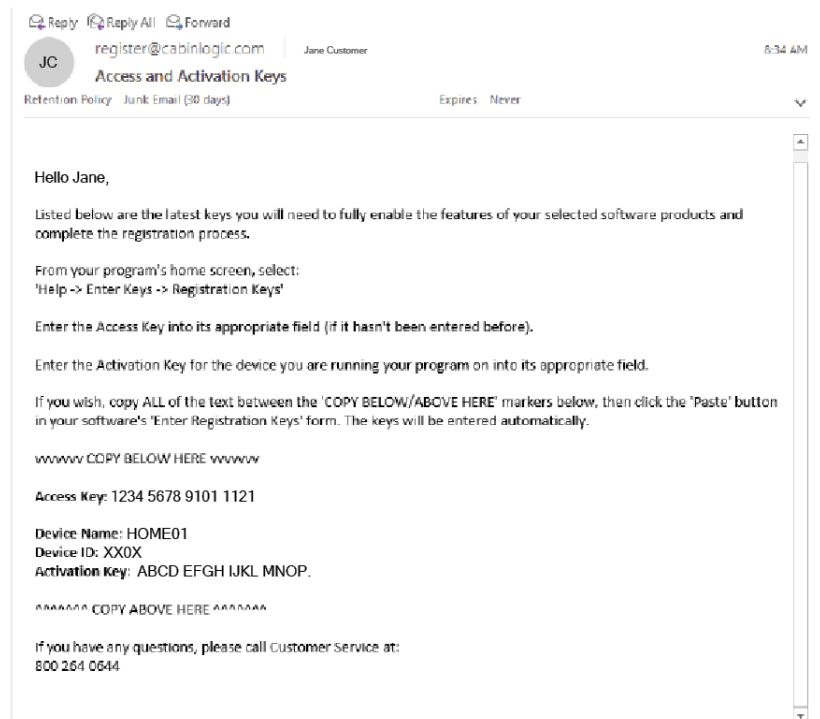
Version  
4.01.68

Customer Service: 800-264-0644

Previous

Close

You will receive a reply from register@cabinlogic.com within 24 to 72 hours. This will include your Activation Key.

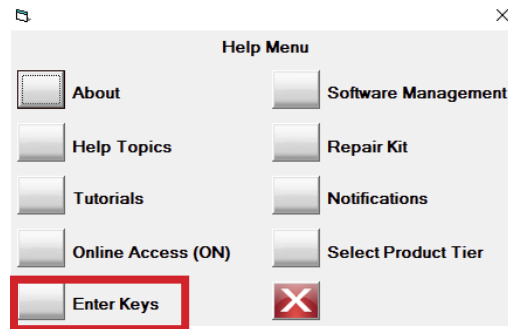


Open Quiltmagine Pro, go to **Help**.

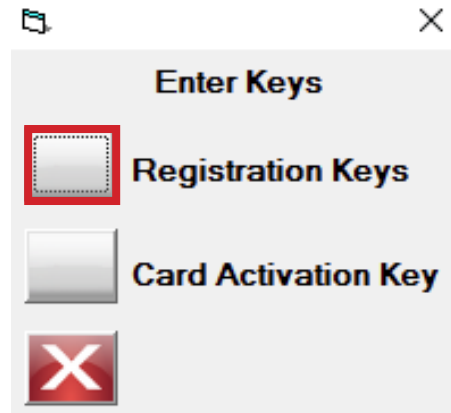




From the **Help Menu** select **Enter Keys**.



From the **Enter Keys** window select **Registration Keys**.



Copy your **Access Key** from the email and paste it into the **Access Key** field, the field will turn green if it is an authentic code.

A screenshot of a 'Software Registration Phone-In Form' window. The title bar says 'Software Registration Phone-In Form'. The main heading is 'Enter Registration Keys'. There are two numbered fields: '4. Access Key:' with a red box around the input field, and '5. Activation Key:' with the value 'NLLWC BREHX 55EZ4 SW2GT XTWG8' and an '(Update)' link below it. Below the fields, it says 'Device ID: QE35'. There is a paragraph of instructions: 'Enter your Access and Activation keys in the above 'Access Key' and '(Update)' fields. Make sure to enter the Activation Key for Device ID QE35. You may copy and paste them from the 'Registration Keys' email. Follow its instructions to do so.' followed by a 'Paste' button. Another paragraph says: 'If the keys are entered correctly, you should be good to go. Click 'Close'.' At the bottom left, it says 'Version 4.01.68' and 'Customer Service: 800-264-0644'. At the bottom right, there is a 'Close' button.



Next copy your **Activation Key** from the email and paste it into the **(Update)** field.

Software Registration Phone-In Form

**Enter Registration Keys**

4. Access Key: ACN 000 2405 TJF3

5. Activation Key: NLLWC BREHX 55EZ4 SW2GT XTWG8  
(Update)

The code will shift into the **Activation Key** field and will be green. Your registration is now complete, click **Close**.

Software Registration Phone-In Form

**Enter Registration Keys**

4. Access Key: ACN 000 2405 TJF3

5. Activation Key: G7SW9 C35JJ H57K6 WFKZ8 ZM6PD  
(Update)

Device ID: KU8R

Enter your Access and Activation keys in the above 'Access Key' and '(Update)' fields. Make sure to enter the Activation Key for Device ID KU8R.

You may copy and paste them from the 'Registration Keys' email. Follow its instructions to do so. Paste

If the keys are entered correctly, you should be good to go. Click 'Close'.

Version 4.01.38 **Customer Service: 800-264-0644** Close

If you are not connected to the internet during the registration process, When you try the **Email It!** link you will receive an error message. Click **OK**.

It appears you are not online.  
You can try the email submission method again,  
or you may need to give us a call.

OK

On the **Almost There...** window click on the **Phone Call** button. Use the phone number provided to call us and we will assist you in completing the registration process. Click **Close**.

Software Registration Phone-In Form

**Almost There..**

If you have entered all of your software product information, you are just about ready to submit it to us.

If online, you can email us the information. If not, call us to register over the phone.

Select which submission option you prefer.

Email It! Phone Call

If you wish to register later, click 'Close' to exit. Your information will be saved.

Version 4.01.38 **Customer Service: 800-264-0644** Previous Close

If you have entered all of your software product information, you are just about ready to submit it to us.

If online, you can email us the information. If not, call us to register over the phone.

Select which submission option you prefer.

If you wish to register later, click 'Close' to exit. Your information will be saved.