

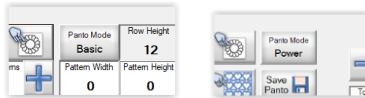
QUILTER'S CREATIVE TOUCH 5, PRO POWER PANTO on ROLLING RAIL FRAME

1. Touch Pantograph.



2. Set Safe Area.

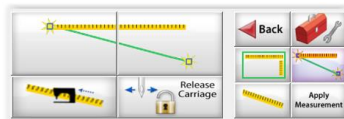
3. Touch **"Panto Mode"** and change from **"Basic"** to **"Power Panto."**



4. Set the **"Total Width"** for your quilt by touching the yellow ruler along top of screen.



5. Touch the icon at bottom with yellow ruler and green slanted line. This will show as a larger version in center bottom of screen. (This is the default selection so it should already show selected.)



6. Move the machine to the top left corner of your quilt top, even with where you want the uppermost stitches of the first row to hit and where you want the stitches to be aligned on the left side (usually a quarter inch to inch outside the left edge of quilt top.)
Position your needle over the intersection of these horizontal and vertical positions.
Touch the left side of the large ruler icon box at bottom.

Move the machine to the right side of your quilt top, the same distance outside the right edge as was used from the left edge. (You do not have to keep the machine moving straight across when making this selection and can be anywhere along right edge.)

Position needle above where stitches should align on the right side.

Touch the right side of the large ruler icon box at bottom.



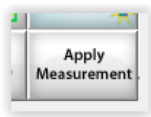
7. Touch icon at bottom with black sewing machine.
This will move your machine to the top of your quilt and to the center of the width (and ultimately your design) you just measured.



MARK THIS POSITION WITH WHATEVER METHOD YOU CHOOSE (painters tape with dot marked on it to place directly beneath needle, removable marking pen, pulled bobbin thread, etc.)

In Step 23, this position is where you will place your needle above after selecting “**Sew in Zones**” and are ready to place zone, when “**Zone Placement (Center)**” is selected.

Touch “**Apply Measurement**” along bottom of screen.



8. Touch “**Total Height**” to enter height of quilt top.
Note: A partial row feature for the last row will allow you to place the lowest stitches exactly where you want them to be so there is no need to reduce the height for shrinkage due to quilting.
Touch “**OK.**”

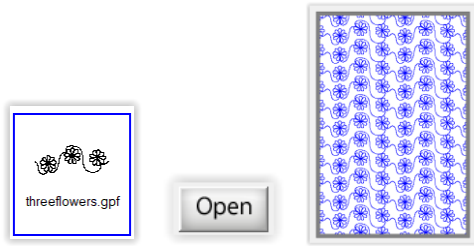


9. Touch “**Select Pattern.**”

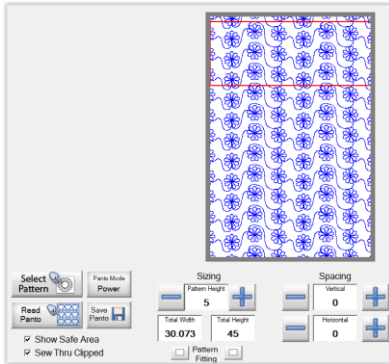


Note: Only 1 pattern can be selected, as Power Panto will take that pattern and auto fill both rows down and number of patterns across, for you to adjust as needed.

10. Touch **“threeflowers.gpf”** (or pattern of your choice) then touch **“Open.”**

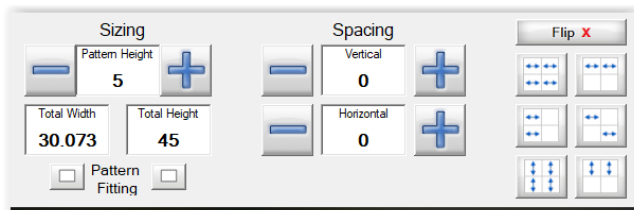


11. Touch the block beside **“Show Safe Area”** in lower left corner to see the red line outlining the Safe Area.



← **“Sew Thru Clipped”** should be checked in lower left corner!

12. Use these options to create the look you want:



The block to the left of **“Pattern Fitting”** can be touched to change horizontal wrapping and the block to the right can be touched to change vertical wrapping. (Only one can be selected.)

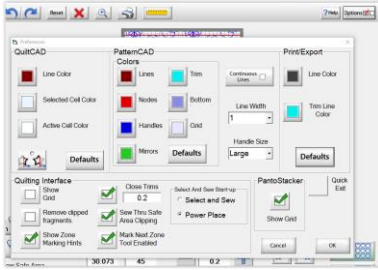
Experiment by touching the **“-”** and **“+”** or the number keypad to decrease or increase sizes and spacing.

Touch the **“dominoes”** under **“Flip X”** to move the patterns around. Try them all out, touching each once twice!!

To return the pattern to its original look, touch **“Reset.”**



13. For 1” grid lines to show on the PantoStacker screen, touch **“Options”** in upper right of screen. These lines give a visual as to size of individual patterns. Touch **“OK.”**



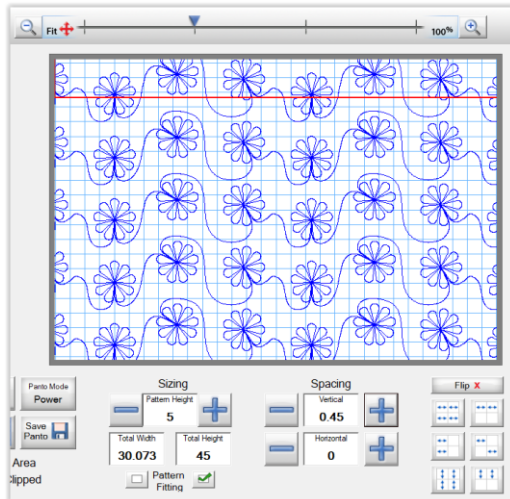
There should be a large green check mark under “**PantoStacker.**”

For a closer look at how patterns are nesting, touch the magnifying glass at the top of the screen.



Touch along the “**Fit**” line at top to magnify your design.

You are still able to use the “**Sizing**” and “**Spacing** “-” and “+” or keypad, “**Pattern Fitting**” and “**Flip**” options to adjust your design in this screen.

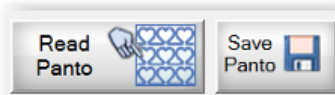


Once you are finished, touch “**Fit+**” to remove the magnification, then touch the red “**X**” icon in upper left of screen to return to the PantoStacker screen.



14. Save your design by touching the “**Save Panto**” icon.

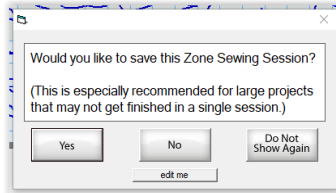
Note: When you need to open the file, touch “**Read Panto**”, then diagram with file name and “**Open.**”



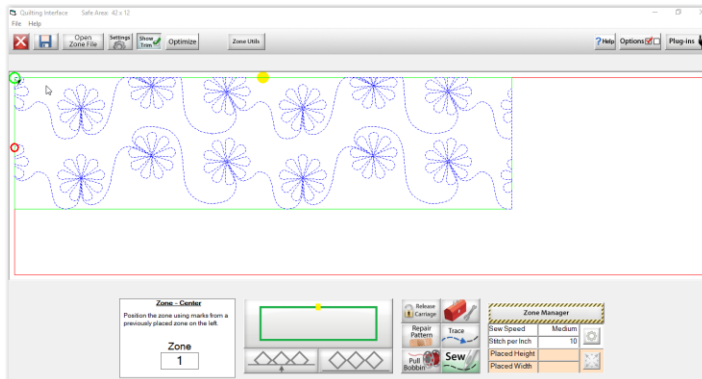
15. Touch **“Sew in Zones.”**



16. When prompted to save this **“Zone Sewing Session,”** touch **“No.”** (If you are using a Hoop Frame, save at this point!)



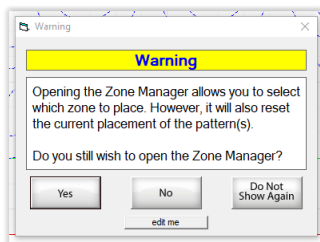
17. The next screen will be the **“Quilting Interface”** screen:



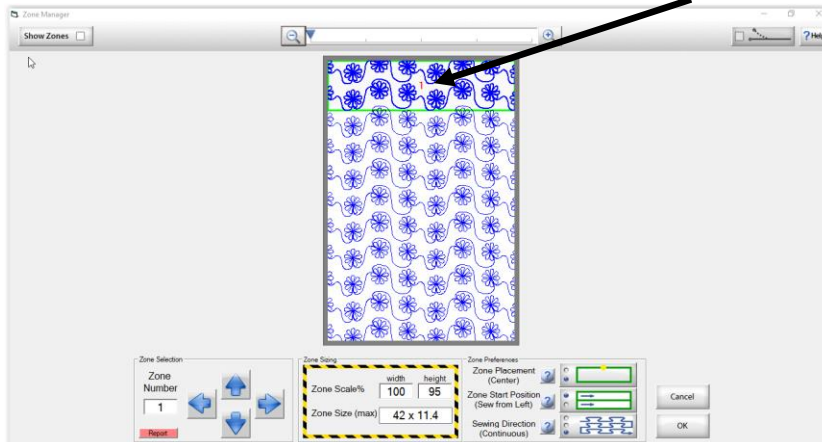
Note: The red lines around design represent the **“Safe Area”** you set back in Step 2. These measurements are shown in small print in the upper left corner of screen.

Touch **“Zone Manager”** icon in lower right of screen.

The following message will show, letting you know that if you have already placed your design on your quilt top that you will need to reset it if you proceed. Touch **“Yes”** to open.



18. You are now in the “Zone Manager” screen. The number “1” in red shows that Zone 1 is selected.



A selected zone will be outlined with a green line and the patterns will show in darker blue. You will begin in Zone 1 and each time your quilt is advanced, QCT will proceed to the next zone. Touching the blue down arrow to the right of “Zone Number” will show how many zones there are. As each zone is selected, the corresponding zone number will show in red on the design. *Whatever zone is selected when “OK” is touched is the zone that stitching will begin with.*

Note: If you need to stop quilting before finishing, when you resume, arrow down to the zone number you need to resume quilting with.

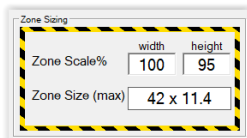
19. In “Zone Sizing”, by default, the “Zone Scale% width” is set to 100. This is because the Safe Area is wider than the width of your quilt top.

The “Zone Scale% height” should *not* be 100 because that would make it the same height as the Safe Area. It can be changed by touching the number to get a numerical keypad. Touch “OK” on keypad after entering desired number.

For most quilts, it is recommended to be no more than 90 for a Q’nique 15 or 95 for a Q’nique 21. This allows for quilt buildup on take-up rail so your zones should be able to stay consistent all the way to end of quilt. With a glide rail, height can be set to 98.

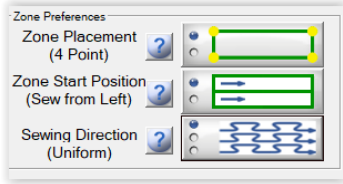
The amount you set will stay until you change it.

Note: For longer quilts, you may need to lower the height number; for shorter projects such as a table runner loaded horizontally, you may need to raise the height number in order to take full advantage of the quilting space.

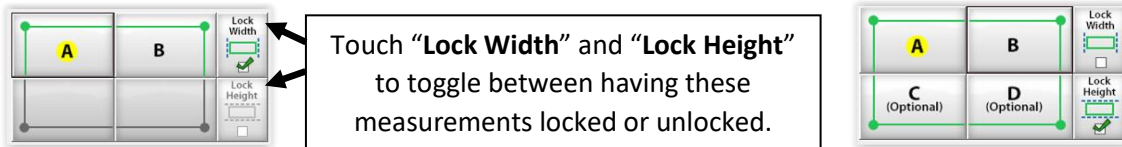


Important: Changing the Zone Scale% has **no effect** on panto size or anything about its design.

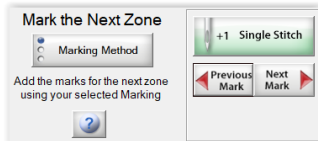
20. Set your “Zone Preferences” to determine how your zone is placed and direction of stitching.



In the “Quilting Interface” screen, with “Zone Placement (4-Point)” selected, only the top left corner “A” has to be placed and “Lock Width” can be selected as shown by green check mark, but all corners can be placed. Once “B” is placed, “C” and “D” are optional for placement.



When a zone has completed stitching, “Previous Mark” and “Next Mark” can be touched to mark one or both lower corners for subsequent zone placement. This is what will be displayed in the “Quilting Interface” screen:



When “Zone Placement (Center)” is selected, zone placement for Zone 1 (whether first row is partial or full) will use the center mark made at the center top of your quilt in Step 7. After each zone has finished stitching, you will be given the option to mark the center before advancing to the next zone. This is the placement to be used for this tutorial.



When “Sew Thru Clipped” is checked as instructed in Step 11, there will be **no need to “Optimize.”**

Note: The design created along with the “squareness” of the quilt will be determining factors in which Zone Placement option is best.

Touch the “?” in blue for the following explanation of the Zone Placement choices:

There are 2 ways to place zones: 4-Point and Center.

- **4-Point Placement**
This method allows the greatest precision in placing zones. Zones can be stretched, skewed, and tilted, using 4-Point Placement.
- **Center Placement**
If your goal is to quickly place pantos down the entire quilt, center placement is ideal for this. A

single point is all that is needed to place the entire zone.

In either case, the software will guide you in placing zones to ensure the patterns align properly, from zone to zone.

“Zone Start Position” has 2 selections: **“(Sew from Left)”** and **“(Alternate).”**

For this tutorial, **“(Sew from Left)”** will be used.

Touch the **“?”** in blue for the following explanation of **“Zone Start Position”** choices:

This option allows you to select which edge of the zone (right or left) the patterns will begin sewing from.

This controls the initial direction of the sewing within a zone.

- **Sew from Left**
The sewing will always begin from the top left corner of the zone.
- **Alternate**
*The sewing will begin from the TOP LEFT for ODD numbered zone rows.
The sewing will begin from the TOP RIGHT for EVEN numbered zone rows.*

“Sewing Direction” has 3 selections: **“(Uniform)”**, **“(Back and Forth)”** and **“(Continuous).”**

For this tutorial, **“(Continuous)”** will be used, allowing rows in each zone to continually stitch back and forth, with a vertical stitch in the outer margin connecting each row.

Touch the **“?”** in blue for the following explanation of **“Sewing Direction”** choices:

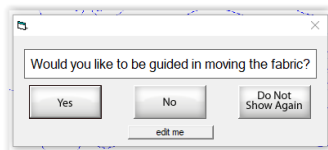
Each zone may contain many rows of patterns. This button sets the direction of sewing for each of the rows.

- **Uniform**
All the rows within a zone will be sewn in the same direction, either all from left to right, or all from right to left. The direction is automatically determined by the software, depending on which zone is being sewn.
- **Back and Forth**
The pattern rows will be sewn left to right, then right to left, etc, within the zone. The software automatically determines whether the sewing begins at the right or left edge of the zone, depending on which zone is being sewn.

Note: **“Uniform”** and **“Back and Forth”** will have jump stitches between rows.

Once you have made your selections, touch **“OK”** in bottom right of screen. You will return to the **“Quilting Interface”** screen.

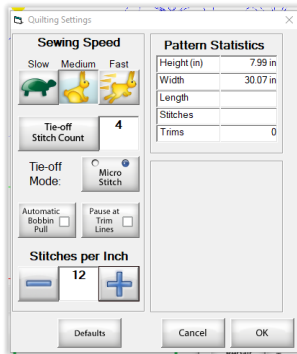
21. Touch your preference to the following question:



22. At top left of screen, touch “Settings.”



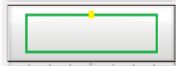
At the following screen, make desired changes and touch “OK.”



If you do not want bobbin pull to be automatic, be sure that choice is not selected.

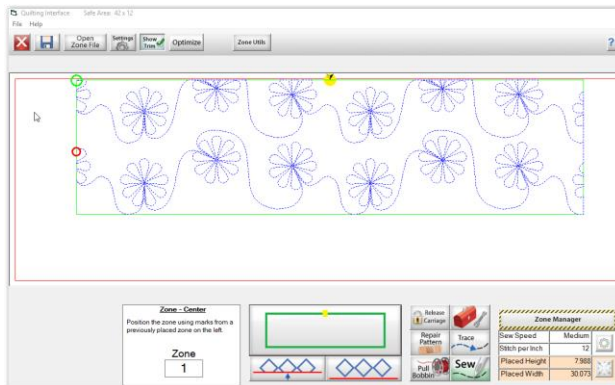
23. Move your needle to where you marked the top center in Step 7.

Touch the rectangle in lower screen:



This places your design so that it can now be quilted.

The green dot shows where stitching will begin and the red dot shows where it will end.

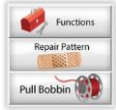


The “Zone-Center” at bottom left of screen shows which zone is active. If you need to stop and resume quilting at a later time, take note which zone you will need to resume with.

Touch “Trace” for machine to move along stitching path without actually sewing.

When you are ready to begin, touch “Pull Bobbin” then “Sew” after bobbin has been pulled.

24. When stitching has finished, **SELECT “PULL BOBBIN” TO PULL UP YOUR BOBBIN THREAD BEFORE PROCEEDING TO NEXT STEP!!!**



At next screen, touch **“Release Carriage”** for manual bobbin pull.

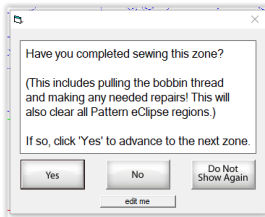
Touch **“Back”** when bobbin has been pulled.



25. Touch **“Finished Zone! Proceed To Next Zone”** at bottom of screen:



26. You will be prompted with the following question:



Touch **“Yes”** to advance to next zone.

27. You will be prompted to **“Mark the Next Zone”**:



There are 3 choices to toggle between by touching **“Marking Method,”** but you can use whatever method you would like (i.e. painters tape method, disappearing marking pen, etc.)

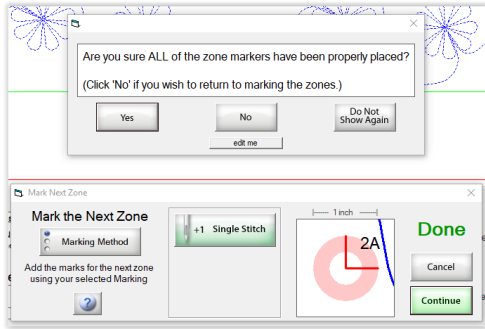
The center of the **“1 inch”** mark represents where the single stitch mark is.

A blue line represents where the design will stitch, relative to that center mark.

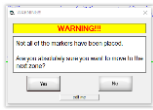
If tape has been used as a marker, this lets you know if stitching will go across tape.

Once you have marked this position, touch **“Continue.”**

If you have correctly followed one of the three zone marking choices, **“Done”** will flash letting you know it is safe to touch **“Continue.”**



Note: If you did *not* use one of the marking methods given on screen, you will get a warning message. Touch **“Yes”** if you are confident position has been marked.



28. Touch your preferred answers to the following screen prompts:

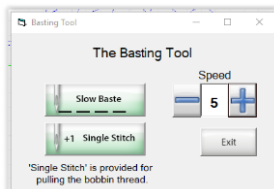


29. [Optional] Each time the quilt is advanced, before resuming quilting, make a basting stitch 1/8” from left and right edges of quilt top by touching red tool box and then **“Baste.”**



The **“Baste”** option is only available with Q’nique machines!! To baste with other brand machines, choose **“Release Sewing Machine”** to have manual control of the machine.

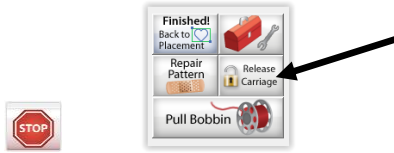
Touch **“Single Stitch”** to pull bobbin, then touch **“Slow Baste”** to begin basting. (To help prevent side stretching of quilt top, baste up, i.e. away from you.)



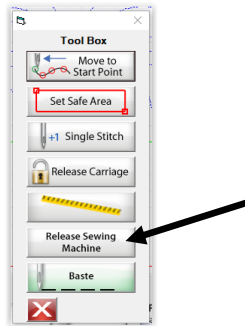
The size of basting stitches will be determined by how far you move the machine between each stitch. Touch **“Speed”** number (for a keypad) or the **“-”** or **“+”** to change the time between each stitch. The range is 1 to 5, with 5 being the fastest, although still quite slow. If quilt top border has fullness that needs to be worked in, choose a slower speed for the basting so that you have time to work in the fullness with your fingers.

Touch **“Exit”** when through basting.

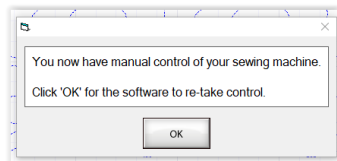
30. [Optional] If/when bobbin or top thread runs out or breaks, touch **“STOP”** immediately along bottom of screen. Touch **“Release Carriage”** to allow machine to move freely so new bobbin can be installed or thread or needle issue corrected.



To make test stitches before resuming quilting, touch the red tool box and touch **“Release Sewing Machine”** option.

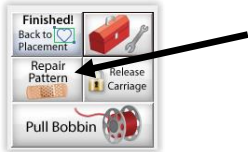


The following message will show on your screen letting you know QCT5 is no longer controlling the machine, allowing you manual control of the machine. **After** sewing test stitches off to side and making any needed tension adjustments, touch **“OK”** on screen message to return control of the machine back to QCT5.



Where stitching ended, pull out enough thread, bringing bobbin thread to top, to tie thread ends together, forming a knot. Bury ends and knot in quilt layers using self-threading needle or other preferred method. Move machine to where needle is near where stitching ended.

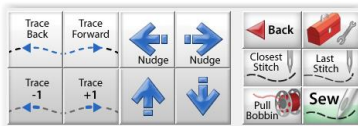
Touch **“Repair Pattern.”**



Touch **“Closest Stitch”** to repair more open designs or touch **“Last Stitch”** for dense designs.

Touch **“Trace Back,” “Trace Forward”** (will need to touch **“STOP”** when using the back and forward selections), **“Trace -1”** (machine takes one stitch back), **“Trace +1”** (machine takes one stitch forward) and the **“Nudge”** keys (machine moves by tiny increments) *to position needle where stitching needs to resume*. Repeat these actions until you are confident the machine is now aligned with where the quilting should resume. Usually, very little nudging is needed, if any. *Take care not to lean on rails and distort alignment!*

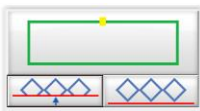
Note: These actions do **not** alter the design or pattern!



Touch **“Pull Bobbin”** and, once bobbin has been pulled, touch **“Sew.”**

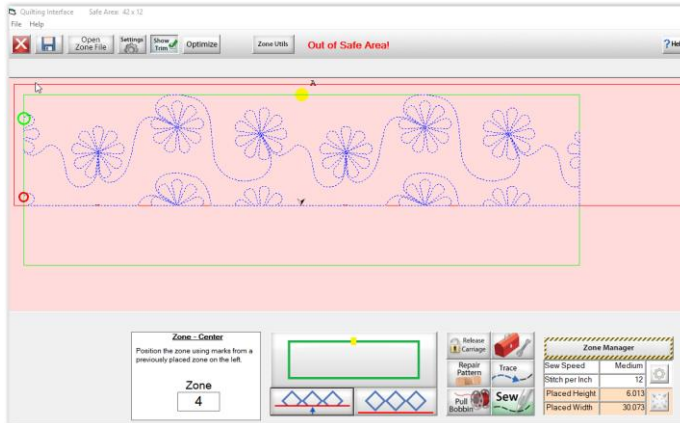
31. [Optional] When floating a quilt and quilt has been advanced within a couple of rows from bottom, it is advised to advance all the way to bottom of quilt top and baste along bottom edge, keeping lower edge straight and corners square. You may want to use straight pins to hold quilt top square and bottom edge in place while you baste. Remove pins once basting is completed. (See Step 29 for basting instructions.) Unroll quilt from take-up rail and re-set to resume quilting.
32. To stitch the exact size needed for a partial row at the bottom, ***move needle to where you want the lowest stitch to hit.*** (Note: Zone placement should have been made at this point – if not, the diamonds beneath the green rectangle will be grayed out and you will not be able to proceed until placement has been made.)

Touch the icon with the partial blue diamonds at bottom of screen.



DO NOT PANIC WHEN YOUR SCREEN TURNS PINK!!!!

This is how this feature works!



Note: To toggle the partial selection off, touch the icon with the full size blue diamonds.

Touch **“Pull Bobbin”** then **“Sew”** after bobbin has been pulled.
Straight line stitches will stitch across the bottom, with no jump stitches.

33. Once you have pulled your bobbin at the end, there is no need to **“Proceed to Next Zone.”**

Now is the time, before removing the quilt from rails, to check for any areas on the backing that may need to be re-stitched. Unroll quilt from take up rail while checking for any poor quality bobbin stitches. Use **“Repair Pattern”** to make any needed corrections.

34. Touch the **“X”** in red square in upper left corner to return to the **“PantoStacker”** screen.

35. Remove quilt from rails!!! Congratulations!!!

The Facebook page for Quilters Creative Touch is
<https://www.facebook.com/groups/QuiltersCreativeTouch/>