

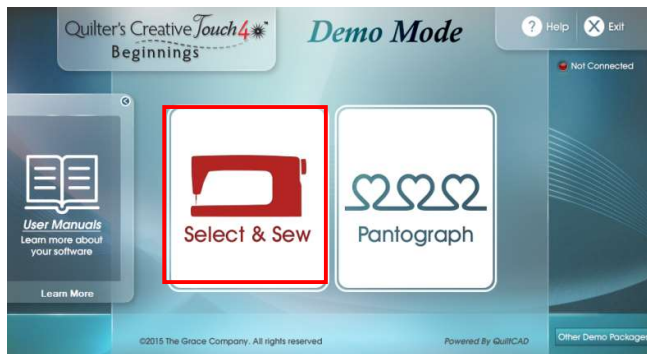
Importing Files

QCT4 comes with some great digital designs loaded for you to first try stitching out these can be used for block's or basic pantographs but everyone wants to know how to import that special design there dying to try, so I will quickly show you how to import a design into your software. QCT4 will read many different file formats (types)

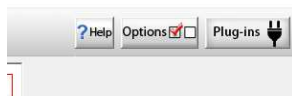
Important - do not download directly to your tablet, do this to your desktop or laptop and then save to a flash drive, QCT4 will not read zipped (compressed) files. I have created a special folder on my desktop as a Library of all my digital files; this is a great backup location in case I lose a file or if it becomes corrupt. Simply copy and paste the desired file onto your flash drive to import into your tablet. It is recommended that you do not store all your digital files within your tablet as this will slow your software down.

Once you have the desired file on your flash drive insert it into the USB hub in your table.

Select & Sew Menu



From the tool bar menu at the top of your screen select the Plug INS Icon



A drop down menu will appear, you will need to select the Batch Import Icon



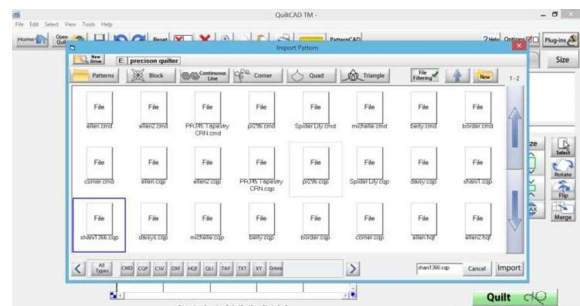
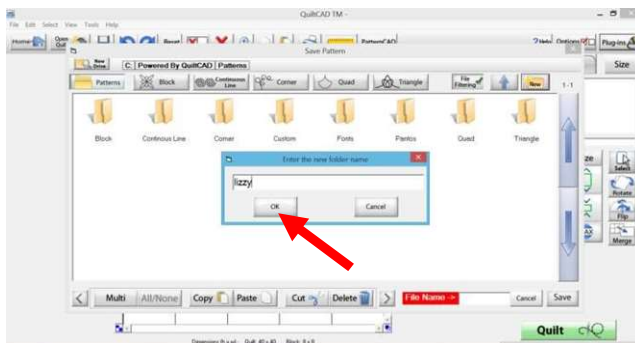
Quilter's Creative Touch 4[★]

STANDARD



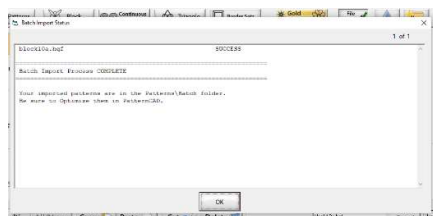
Select New Drive icon, and navigate to your flash drive, you will note that it will install the Drives attached to your tablet like all Computers.

Note: mine is E: Lizzy Stick, your will say something different. Select the one that is your flash drive

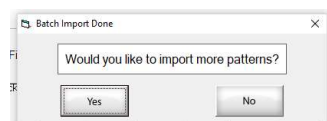


Select the desired file, Select Ok,

You will then see this message appear on your screen.



The software will ask you if you would like to continue importing

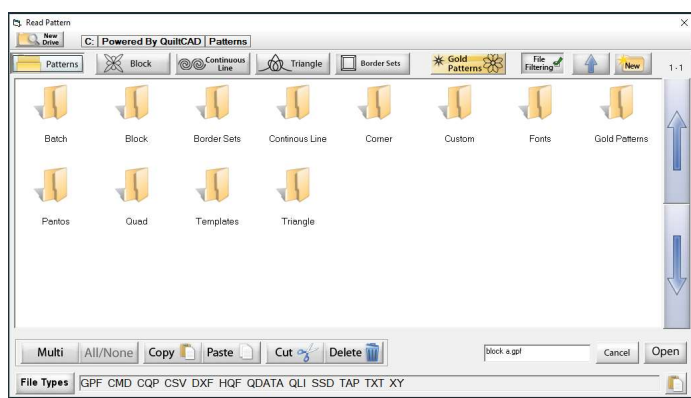
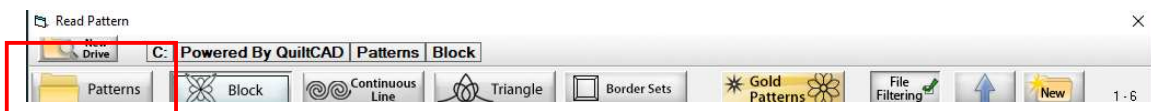


Quilter's Creative Touch⁴★ STANDARD

Then you will see the following prompt select – if you select yes you will now see your pattern on the screen.



Important note if you are looking for your patterns after you have imported them, they will be in your batch fold , to locate the batch folder, select the pattern icon in the tool menu at the top of your screen



Double Tap the Batch folder to view your designs – you can access your batch folder at any time within your software.

Select the design you would like to use, and select open.

