

# Kirby Morgan 57 Helmet 500-080 / 500-081



Location #	Part #	Description
1	520-054	Visor
2	510-754	Head Cushion Assembly
	510-722	Head Cushion Bag
3	510-837	Head Cushion Foam Spacer Assembly (Order P/N 525-745)
	510-836	Head Cushion Foam Spacer Bag
4	510-683	Chin Cushion Assembly
	510-639	Chin Cushion Bag
5	505-024	Side Block Assembly (B)
	505-025	Side Block Assembly (B), Brass
6	520-033	O-ring, Teflon®
7	555-154	Bent tube Assembly, No O-rings
8	510-012	O-ring
9	555-155	Bent Tube Assem w/O-rings
10	560-125	Weight, Top
	560-116	Weight, Top, Brass
11	530-070	Screw
12	530-032	Screw
13	530-070	Screw
14	530-540	Washer
15	505-108	Helmet Shell, 57 with Ring
16	530-078	Screw
17	530-540	Washer
18	530-527	Washer
19	530-078	Screw
20	560-133	Handle, 57
	560-136	Handle, Brass, 57
21	560-196	Plaque, 57
22	560-535	Handle with Plaque, 57
	560-523	Handle with Plaque, Brass 57
23	530-045	Screw
24	510-762	Air Train Gasket
25	530-050	Screw
26	530-535	Washer
27	530-415	Washer, Lock
28	530-317	Nut
29	545-016	Air Train
30	530-535	Washer
31	530-317	Nut
32	560-032	Weight, Port Side
	560-033	Weight, Port Side, Brass
33	530-062	Screw
34	530-052	Screw
35	530-035	Screw

Location #	Part #	Description
36	550-062	Knob, Nose Block
	550-252	Knob, Nose Block, Brass
37	555-180	Packing Nut
	555-190	Packing Nut, Brass
38	510-008	O-ring
39	550-116	Nose Block Guide
	550-249	Nose Block Guide, Brass
40	560-070	Port Retainer, w/#39
	560-071	Port Retainer, Brass, w/#39 Brass
41	510-010	O-ring
42	520-004	Face Port
43	510-260	O-ring, View Port
44	530-015	Screw
45	530-032	Screw
46	505-110	Sealed Pull Pin
47	550-063	Body, Water Dump
48	510-561	Valve, Water Dump, Black
49	510-033	O-ring
50	520-042	Tie Wrap
51	530-019	Screw
52	510-007	O-ring
53	560-530	Cover, Water Dump Adapter
54	505-111	Chin Strap Assembly Purchase 525-716 Kit
55	510-781	Spacer for 57
56	510-786	Starboard Whisker Wing
57	510-760	Quad Valve Exhaust Main Body
58	520-042	Tie Wrap
59	520-200	Whisker Exhaust Valve Insert
60	510-776	Exhaust Valve
61	520-118	Tri/Quad Valve Whisker Clamp
62	530-008	Brass Screw
63	530-009	Brass Nut
64	510-787	Port Whisker Wing
65	505-730	Quad Valve Exhaust Assembly
66	530-045	Screw
67	550-061	Spacer
68	540-015	Kidney Plate
69	505-560	SS Balanced Regulator, SuperFlow® 450
70	530-546	Washer for Swing Catch
71	530-035	Screw
72	550-061	Spacer
73	540-086	Swing Catch
74	520-167	Teflon® Washer for Swing Catch

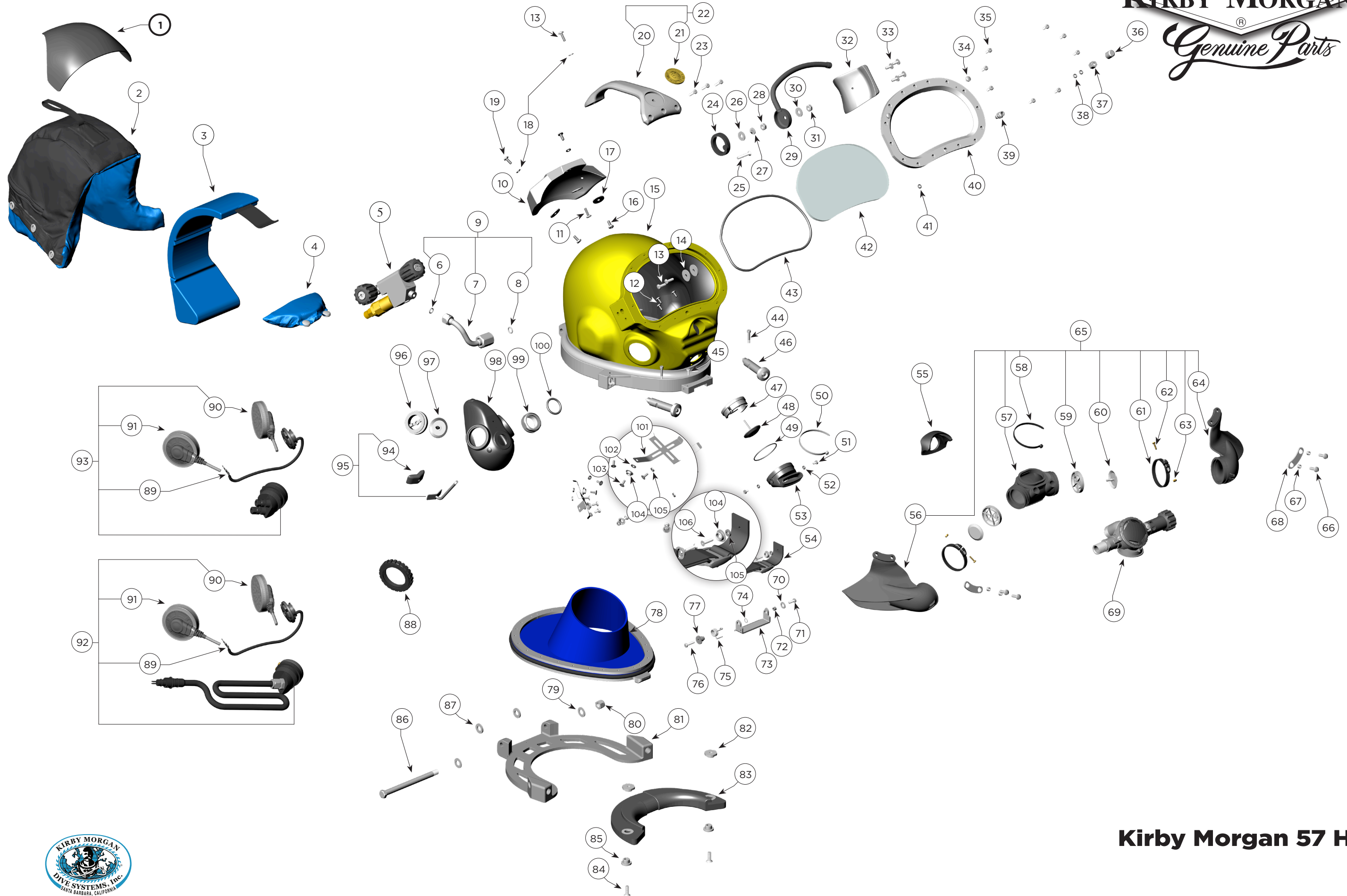
Location #	Part #	Description
75	535-825	Spring, Swing Catch
76	530-045	Screw
77	550-122	Spring Spacer
78	505-119	Neck Ring Assembly (neoprene) Med.
79	530-545	Washer
80	530-028	Lock Nut
81	560-111	Locking Collar
82	550-113	Adjustment Nut, Neck Pad
83	520-098	Neck Pad
84	530-064	Screw
85	550-045	T-Washer
86	530-027	Hinge Bolt
87	520-165	Washer
88	320-026	Comm. Mount Nut
89	515-029	Microphone Assembly
90	515-019	Earphone, Left, 15.5"
91	515-018	Earphone, Right, 9"
92	515-024	Comm. Assembly w/MWP
93	515-023	Comm. Assembly w/Posts
94	510-575	Nose Block Pad
95	545-015	Nose Block Device Includes location #94
96	520-020	Valve Body
97	510-550	Valve, Oral Nasal
98	510-747	Oral Nasal Mask
99	550-081	Nut, Regulator Mount
100	510-490	O-ring
101	540-054	Earphone Retainer
102	530-519	Washer
103	530-018	Screw
104	530-702	Snap
105	530-527	Washer
106	530-031	Screw

**⚠ CAUTION**

**Use only Kirby Morgan original replacement parts. The use of other manufacturers' parts will interfere with the performance characteristics of your life support equipment and may jeopardize your safety. Additionally, any substitutions will void any warranties offered by KMDSI. When ordering spares, always insist on Kirby Morgan original parts.**



**Kirby Morgan Dive Systems, Inc.**® 1430 Jason Way, Santa Maria, CA 93455  
 Phone: 805/928-7772 Fax: 805/928-0342  
[www.KirbyMorgan.com](http://www.KirbyMorgan.com) e-mail: [kmdsi@KirbyMorgan.com](mailto:kmdsi@KirbyMorgan.com)



**Kirby Morgan 57 Helmet**

