

Call 866-563-5438 For Help

NSS8 (XLT)

INSTALLATION MANUAL



COMPONENTS & PARTS

- A- Cable End Hardware (4)
- B- Long and Short Runway Hardware (Four long and Four Short) (8)
- C- Post Cap Hardware (12)
- D- Caster Hardware (16)
- E- Power Unit Hardware (4)

A



B



C



D



E



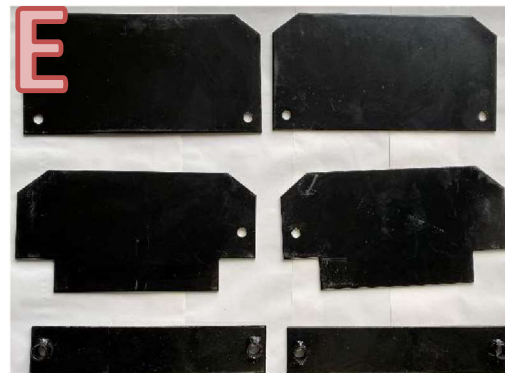
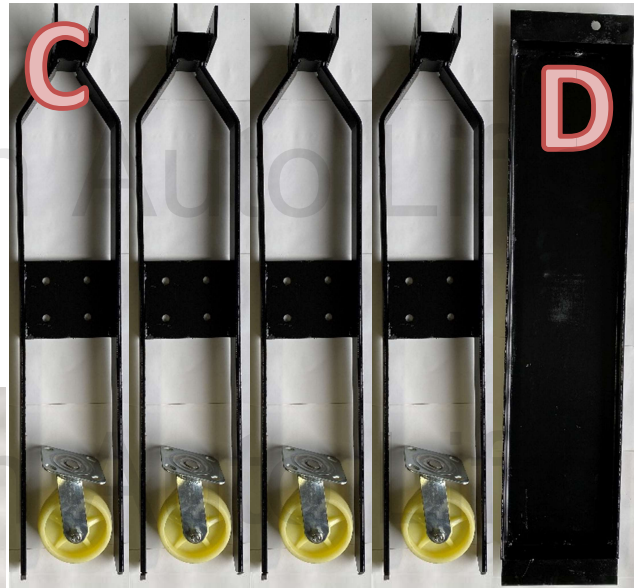
HARDWARE

COMPONENTS & PARTS

CONTINUED



- A- Drip Trays (3)
- B- Steel Ramps (2)
- C- Caster Dollies (4)
- D- Jack Tray (1)
- E- Runway Stop Assembly (6)



Call [866-563-5438](tel:866-563-5438) For Help

COMPONENTS & PARTS

CONTINUED

A- Caster Pins

B- Lock Release Rods



Call 866-563-5438 For Help

COMPONENTS & PARTS

CONTINUED

- A- Columns (4)
- B- Power Unit (1)
- C- Power Unit Hose (1)
- D- Column Caps (4)



Call [866-563-5438](tel:866-563-5438) For Help

STRUCTURE AND MOTOR

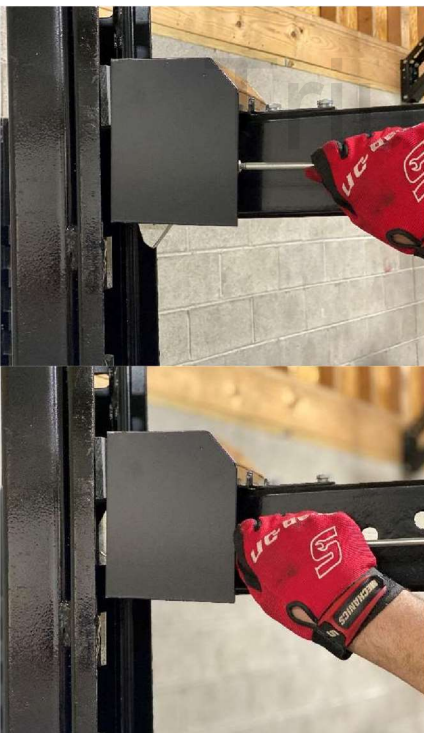
INSTALL PART 1



Arrange the 8 major components in a configuration conducive to assembly.

- Tracks (x2)
- Columns (x4)
- Cross Rails (x2)

Align cross rail with opening at the top of the column, with the locks on the same side as the steps.



Pull lock rod with hand to release the lock and slide the cross rail down the column to the lowest setting. Repeat on other 3 columns until you have two sets of two columns and one cross rail

Call [866-563-5438](tel:866-563-5438) For Help

Once both cross beams are sitting in the columns, place runway between the cross rails with lips sitting on top of cross rails. Be sure to leave the smooth edge of the runway facing outwards.

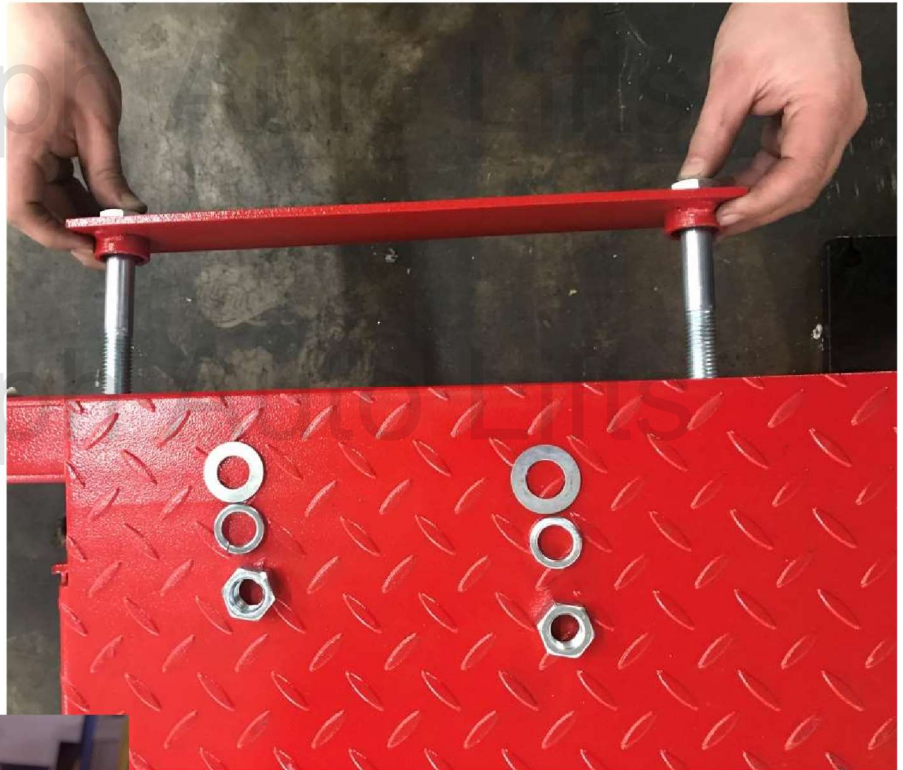
CAUTION!

Runways are VERY heavy and will require more than one person to lift.



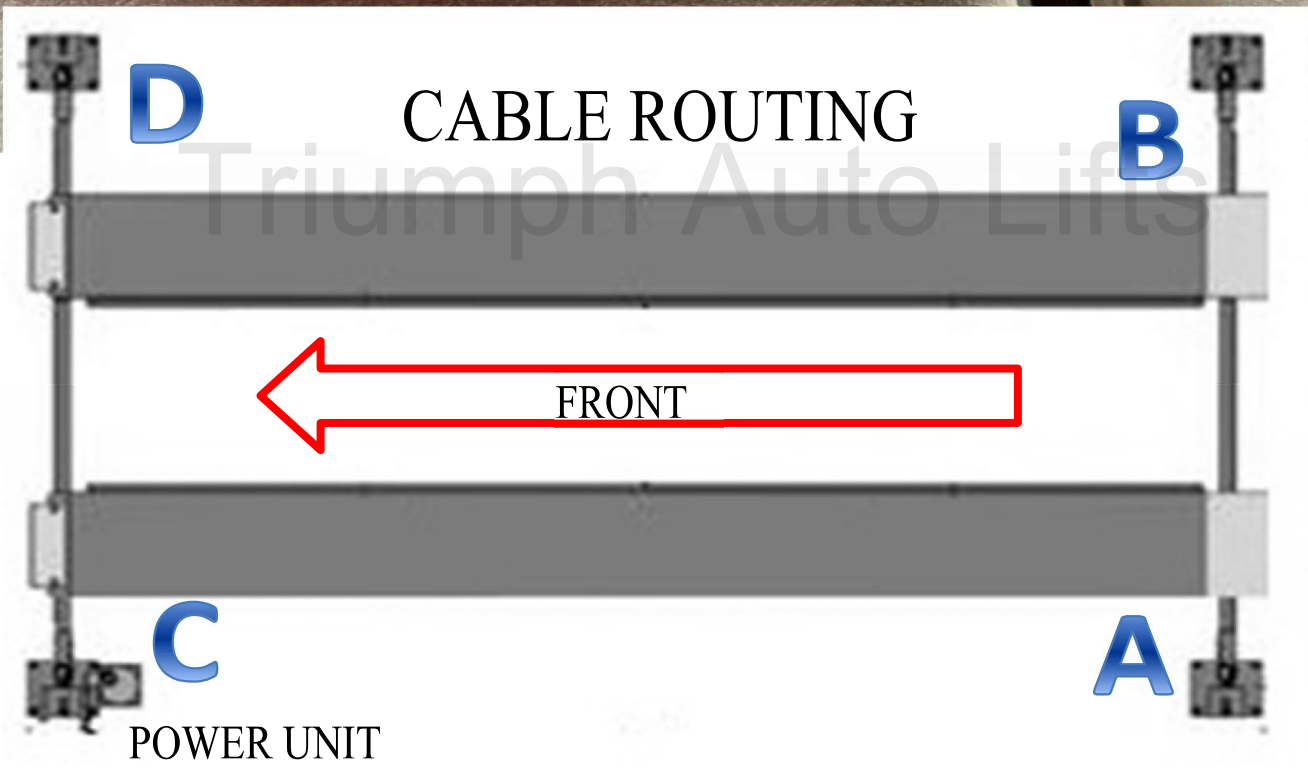
Once Runways are set in place, locate the runway hardware (8 large bolts with washers, lock washers and nuts) and ramp hangers.

Install as shown and tighten until lock washers are fully depressed.



Call 866-563-5438 For Help

INSTALL PART II



INSTALLER

NOTE:



When Installing cables, move the cylinder in and out manually; either by hand or with ratchet straps.

Once hydraulic fluid is added and hooked up you will no longer be able to move the ram manually to run cables.

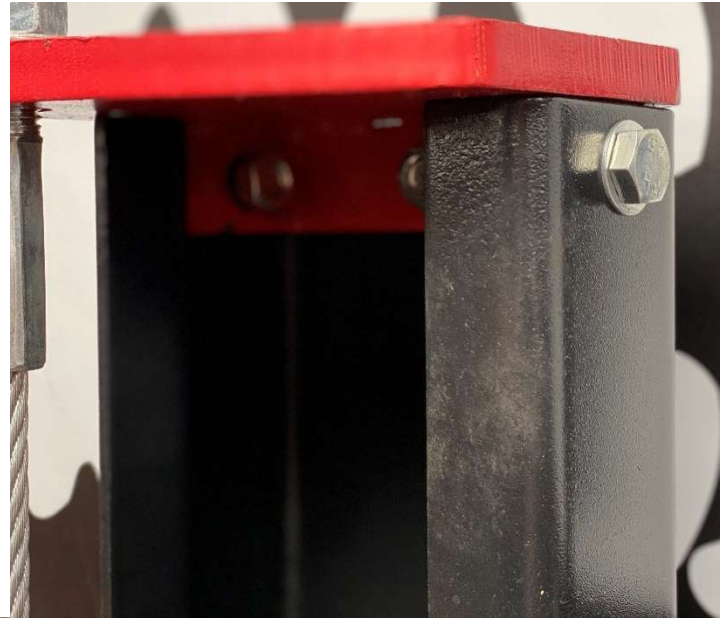
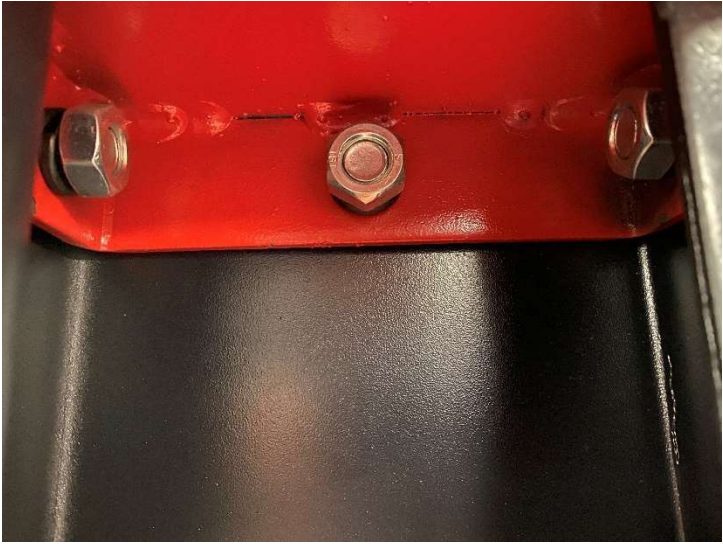
CAUTION

NOTE: cables come pre-installed in the runway with the cylinder, refer to the previous image for routing cables to where they terminate.

Install the 4 top plates to be with the cable mounting holes all pointed toward the centermost part of the lift.

Call [866-563-5438](tel:866-563-5438) For Help

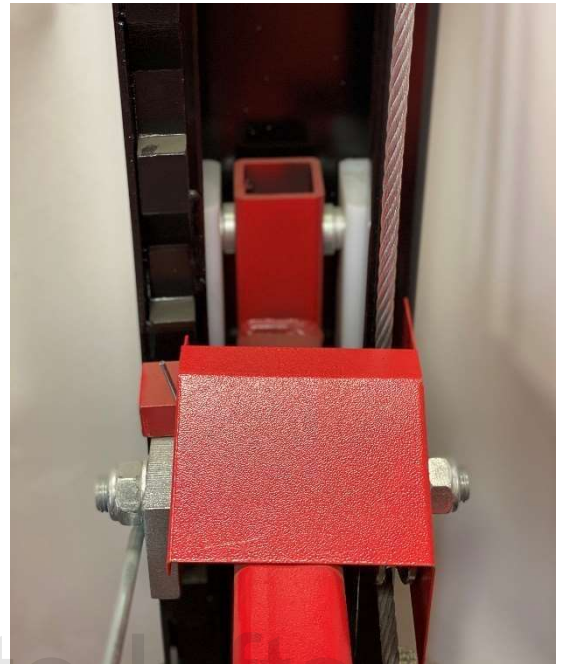
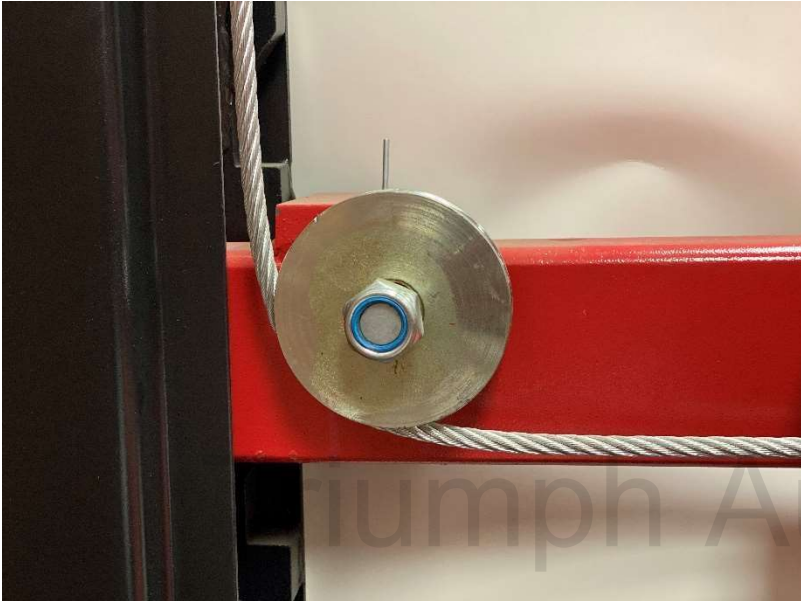
NOTE: Use “post cap hardware” to install post caps, three bolts per cap.



Auto Lifts
Auto Lifts

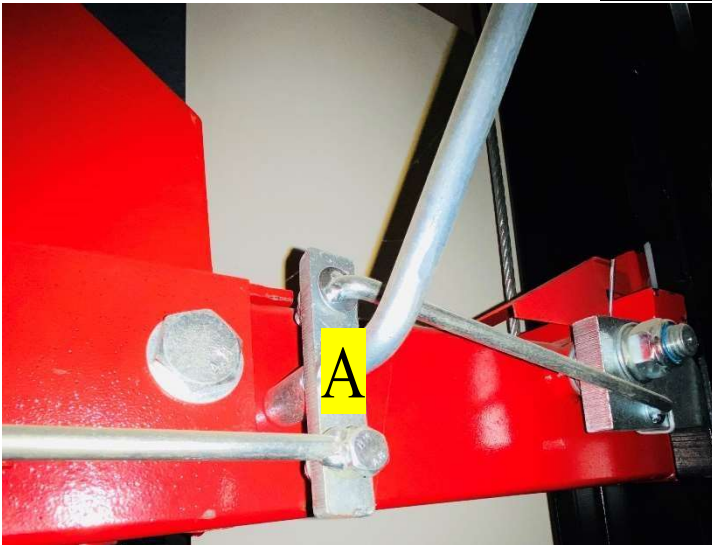
Call 866-563-5438 For Help

After all cables are routed and installed as shown, run cable through pulley on the cross rail and up towards the column cap



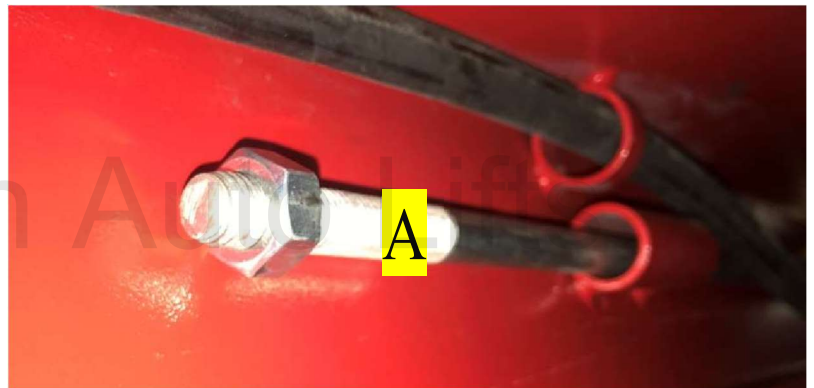
The termination point for all 4 cables is the top caps on each column.

Complete installation of the cables by inserting the cable up through the bottom of the top cap cable hole as shown here.



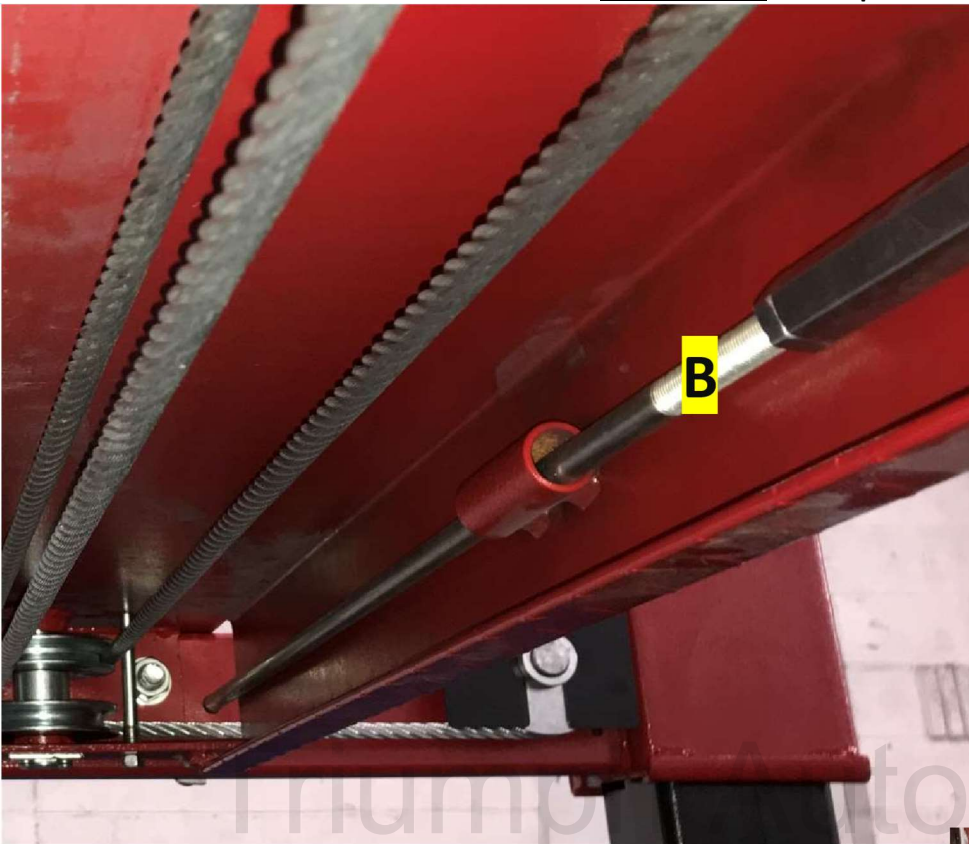
Insert Front Lock Release Lever (A) into the hole on the right front of the lift. Install 1 Jam nut on threaded end once inserted fully.

NOTE: Take caution to make sure lock lever is inserted through the retaining ring on the innermost part of the runway.



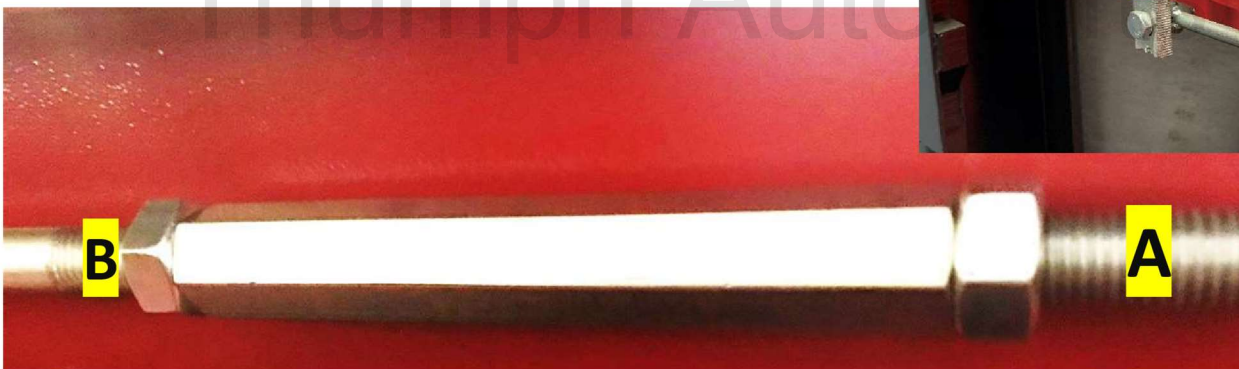
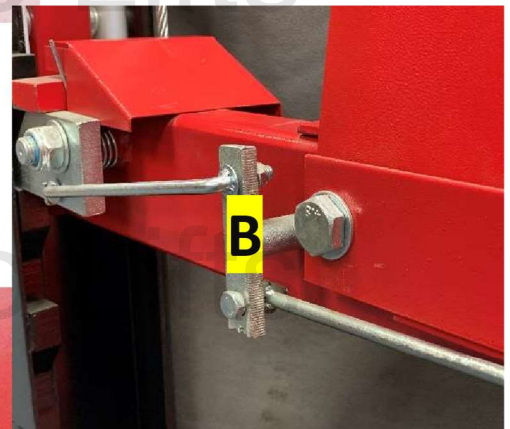
Connect Front Lock Release handle (A) to Rear Lock Release (B) using the supplied female threaded connector.

NOTE: Jam nuts (included) are required at each end of the threaded connector. Jam nuts **MUST** be once the entire lock release system is installed and adjusted.



Insert Rear Lock Release (B) into the hole on the right Rear of the lift.

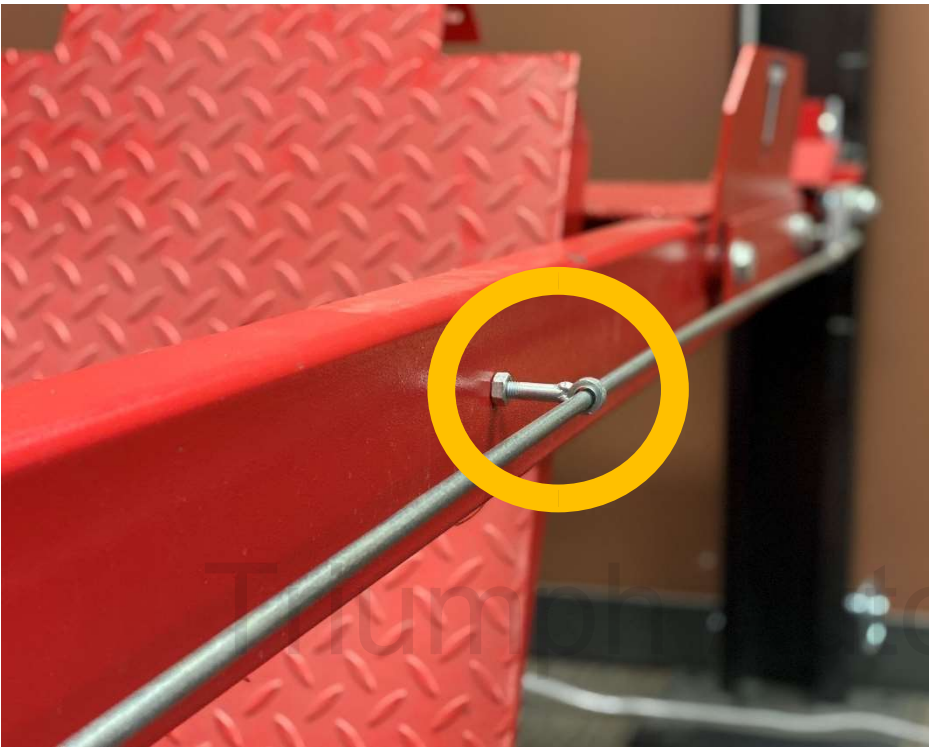
NOTE: Take caution to make sure lock lever is inserted through the retaining ring on the innermost part of the runway.



Connect Rear Lock Release (B) to Front Lock Release Handle (A) using the supplied female threaded connector.

Call [866-563-5438](tel:866-563-5438) For Help

NOTE: Jam nuts (included) are required at each end of the threaded connector. Jam nuts **MUST** be tightened once the entire lock release system is installed and adjusted.



Install Lock Connecting Rod Eyelets into threaded hole in the center of each end of the lift. Slide Lock Connecting Rod (D) through eyelet and install 1 lock nut and one heim joint on each end of the rod.



Call [866-563-5438](tel:866-563-5438) For Help

With the Front Lock Release Lever Handle (A) at approximately a 45 degree angle to the floor, connect Latch rods and Lock Rods to Lock Release Levers and safety latches with supplied Allen head bolts.

INSTALL PART III



Hang power unit on power unit mount bracket as shown.

Call [866-563-5438](tel:866-563-5438) For Help



Remove 1 of the 2 nuts from the 90 degree fitting under the runway.

Install 90 degree fitting through the runway from the inside.



Capture 90 degree fitting from the outside of ramp with second jam nut that was removed.

Tighten just until the fitting can no longer freely move.



Call [866-563-5438](tel:866-563-5438) For Help
Fitting goes here on power unit.





1 Connect 90° end of hydraulic cable to power unit (Like shown in Picture 1)

Connect straight end to Runway fitting (Like shown in Picture 2)

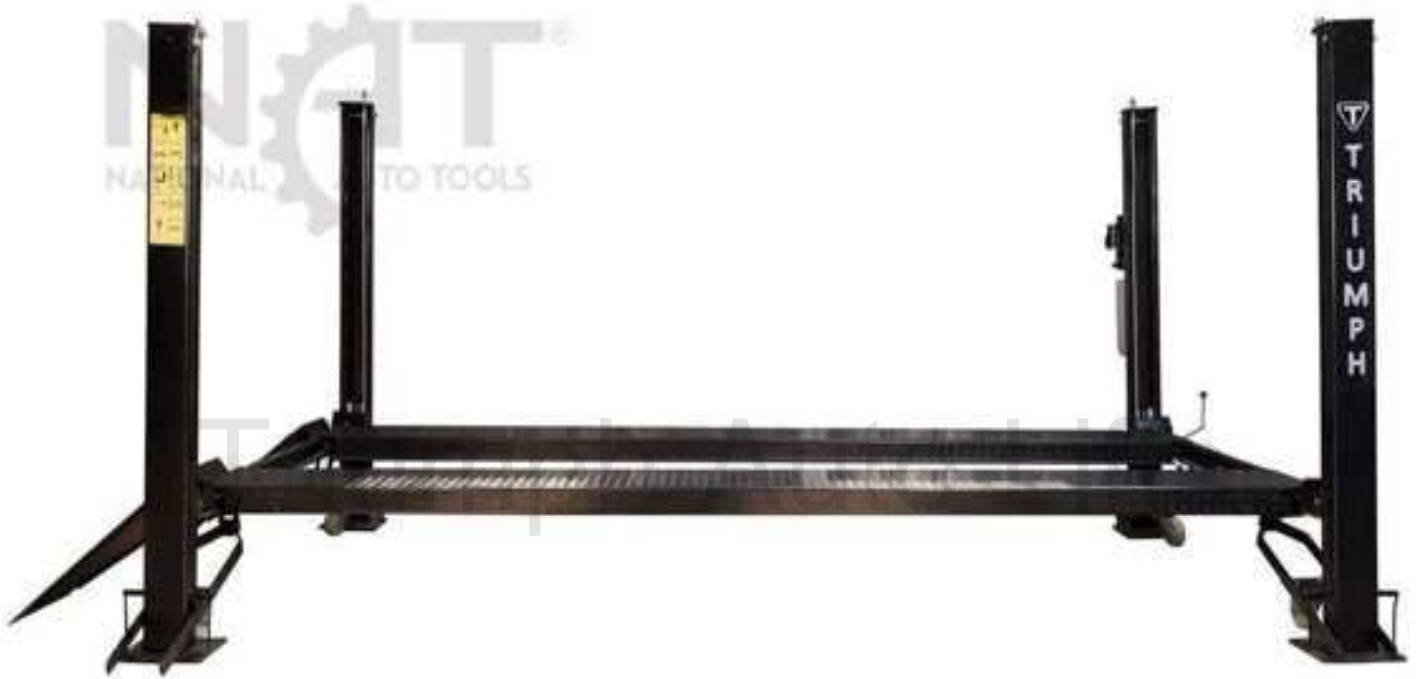
Triumph Auto Lifts

2



Call [866-563-5438](tel:866-563-5438) For Help

INSTALL CHECKS



Triumph Auto Lifts

At this point your NSS8 (XLT) Assembly is completed and should resemble the image above.

**CONTINUE READING PRECAUTIONS BEFORE FIRST
USE!**

PRECAUTIONS

- Your new lift operates off 110v 30Amp household power and has the potential of electric shock *ALWAYS USE CAUTION WHEN WORKING WITH ELECTRICITY*
- Your new lift will require approximately 3 gallons of ATF (Automatic Transmission Fluid) or clear hydraulic oil. DO NOT MIX
- Check all hardware to ensure everything is properly secured before first use.
- Do NOT circumvent or modify any safety features on this equipment.
- Never Lift a vehicle with passengers onboard.
- Never Overload your lift beyond the stated capacity rating.
- Always use proper safety equipment when working around /under lift.
- Never work under lift without locks fully engaged.
- Always keep your lift clean and clear of debris.
- Inspect lift before every use for signs of wear or damage.
- Always announce when you intend to lower lift and ensure no persons or personal equipment are in the path of the lift.
- Never Remove Safety warning labels. If labels become damaged or unreadable please contact us for replacements.
- Never operate lift power with a generator, surges can damage motor.
- Never use wheeled casters while the lift is loaded, casters are not rated for transport.
- Do NOT press switch and pull handle on power unit at the same time.

CAUTION

Never start motor under a load, ensure lift is sitting on locks or on the ground before commencing to lift a vehicle. Failure to heed this caution can cause motor damage and void motor warranty.

Always lower lift to full locked position before getting underneath the lift. Failure to heed this caution can result in serious injury or death.

Stop use of lift immediately if any conditions occur that may make the lift unsafe to operate. If you notice a problem with the lift and you are unsure if it is a safety issue, STOP use immediately and contact the manufacturer.