

ARIZONA TILE

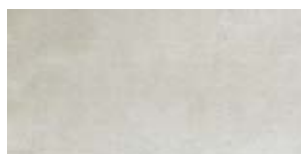
RESIDE SERIES



Reside Brown



Reside Ash



Reside Beige



Reside Black



Reside Brown

Straight Stack Joint 1"x12"



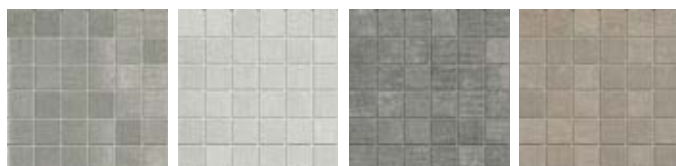
Reside Ash

Reside Beige

Reside Black

Reside Brown

2"x2" Mosaic



Reside Ash

Reside Beige

Reside Black

Reside Brown

PRODUCT TYPE

Rectified Color Body Porcelain

MANUFACTURER

Iris Ceramica

Made in Italy

COLORS

Reside Ash

Reside Beige

Reside Black

Reside Brown

FINISHES

Matte

Semi-Polished

SIZES

12"x24"x10mm Matte

12"x24"x10mm Semi-Polished

24"x24"x10mm Matte

2"x2"x10mm Mosaic Matte

Straight Stack Joint 1"x12"

Matte/Semi-Polished Blend

RECOMMENDED USES

Commercial & Residential

Interior & Exterior

Floor & Wall

Backsplashes

Countertops

Fireplaces

Tub Surrounds & Showers

Vanities

Swimming Pools

TRIM

3"x12" SBN Matte

3"x12" SBN Semi-Polished

DYNAMIC C.O.F. WET: 0.32

(semi-polished)

DYNAMIC C.O.F. WET: 0.66 (matte)

P.E.I. RATING: 4

FROSTPROOF: Yes

The Reside Series is a rectified color body porcelain. Inspired by the rich textures of commercial textiles, this series has a clean look and offers a simplistic, modern appeal. It is available in four neutral, on-trend colors and provides an industrial and commercial aesthetic that is available for residential installations as well. Because this material is a porcelain product, maintenance risks involved with actual stone are eliminated. There will be noticeable variations in color and movement between pieces. Therefore, it is important and recommended that a range of this product be viewed before finalizing a purchase. This series is suitable for residential and commercial applications. For proper bonding, LHT/LFT mortar for large format and heavy tiles should be used when installing tiles with a dimensional length greater than 15" and rectangular shape and plank tile, per industry standards. Proper thinset coverage is also necessary, and in some cases, back buttering of tile may be required.

When installing rectangular tiles 18 inches or longer with a staggered joint, it is recommended that the offset should not exceed 33%, unless otherwise specified by the manufacturer.



**PRODUCT CONTAINS
6% POST-CONSUMER
RECYCLED CONTENT**

SIZE	SF/PIECE	PIECES/BOX	SF/BOX	BOXES/PALLET	SF/PALLET
12"x24"x10mm	1.9368	5	9.6840	56	542.3040
24"x24"x10mm	3.8736	3	11.6208	40	464.8320
2"x2"x10mm Mosaic	0.9555	10	9.555	45	429.975
Stack Straight Joint 1"x12"	0.9555	10	9.555	45	429.975
3"x12" SBN	0.2346	30	N/A	72	2160 pieces/pallet

Standard packaging quantities are noted above, but variances may occur.

Please view actual material when making your selection, as the images on this page are only representative.