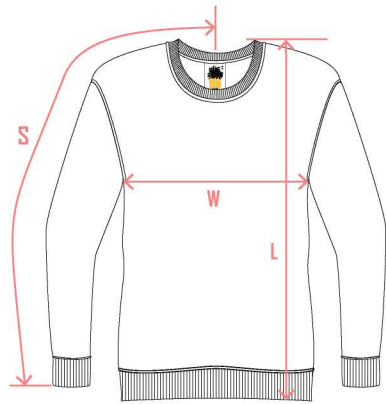
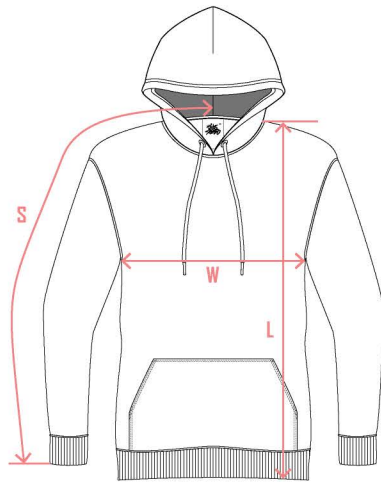


HERO Unisex Tops Sizing Chart

NORTH AMERICAN SPECS

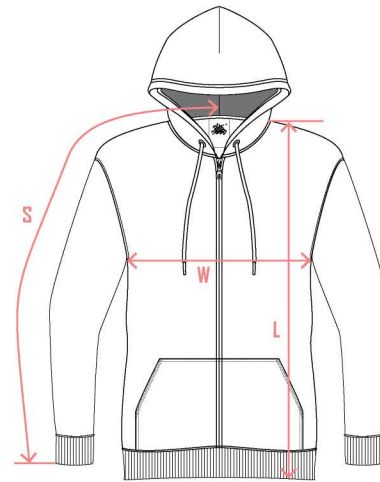


**HERO 1020
CREWNECK**

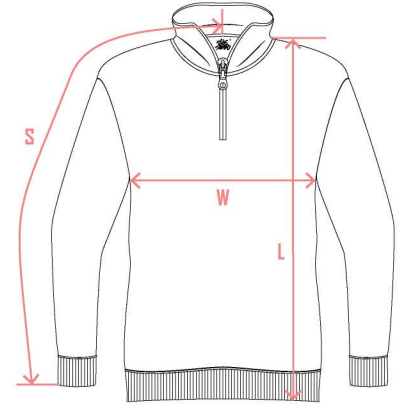


**HERO 2020
HOODIE**

* Available in Adult XS



**HERO 3020
FULL-ZIP**



**HERO 4020
QUARTER-ZIP**

YOUTH

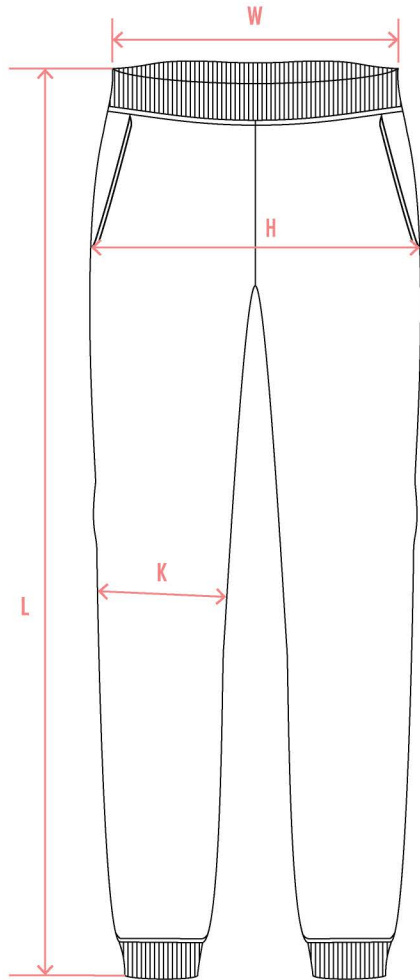
ADULT

| SIZE | YXS | YS | YM | YL | YXL/XS | S | M | L | XL | 2XL | 3XL | 4XL | 5XL |
|------------|-----|----|----|----|--------|----|----|----|----|-----|-----|-----|-----|
| WIDTH (W) | 15 | 16 | 17 | 18 | 19 | 20 | 22 | 24 | 26 | 28 | 30 | 32 | 34 |
| LENGTH (L) | 21 | 22 | 23 | 24 | 25 | 26 | 27 | 28 | 29 | 30 | 31 | 32 | 33 |
| SLEEVE (S) | 26 | 28 | 30 | 32 | 34 | 35 | 36 | 37 | 38 | 39 | 40 | 41 | 42 |

* Adult XS is only available in HERO 2020. Please select Youth XL as Adult XS for the other three styles.
All measurements are in inches. Questions about the fit? Email us at wecare@justlikehero.com

HERO Unisex Bottoms Sizing Chart

NORTH AMERICAN SPECS



**HERO 5020
JOGGERS**

YOUTH

| SIZE | YXS | YS | YM | YL | YXL/XS |
|----------------|------|-----|------|-----|--------|
| WIDTH (W) | 10.5 | 11 | 11.5 | 12 | 12.5 |
| LENGTH (L) | 30 | 32 | 34 | 36 | 38 |
| HIP (H) | 15.5 | 16 | 16.5 | 17 | 18 |
| KNEE WIDTH (K) | 6.1 | 6.3 | 6.5 | 6.7 | 6.9 |

ADULT

| SIZE | S | M | L | XL | 2XL | 3XL | 4XL | 5XL |
|----------------|------|------|------|-----|------|------|------|------|
| WIDTH (W) | 13.5 | 14.5 | 15.5 | 17 | 18 | 19 | 20.5 | 21.5 |
| LENGTH (L) | 39 | 40 | 40.5 | 41 | 41.5 | 42.5 | 43 | 43.5 |
| HIP (H) | 19 | 20 | 21 | 22 | 23 | 24 | 25 | 26 |
| KNEE WIDTH (K) | 7.1 | 7.3 | 7.7 | 8.1 | 8.5 | 8.9 | 9.3 | 9.6 |

All measurements are in inches. Questions about the fit? Email us at wecare@justlikehero.com