

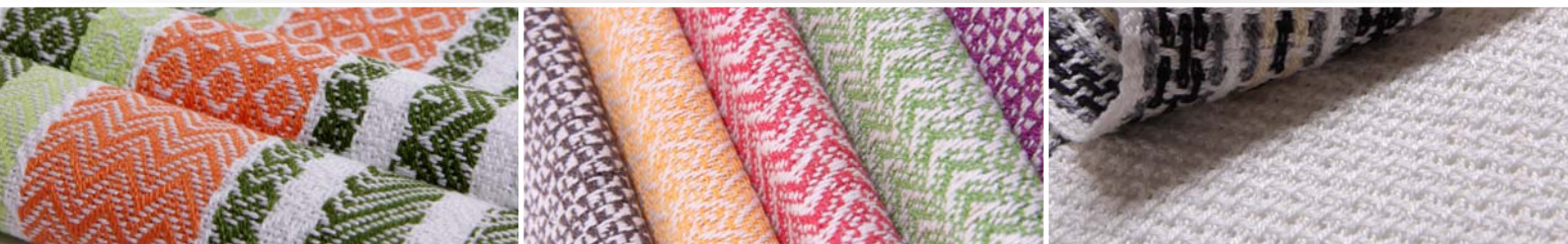
PRODUCT ALERT

JACK IS BACK!

and even better than before!
redesigned with great new features.



Eight Shaft - 97cm (38") weaving width

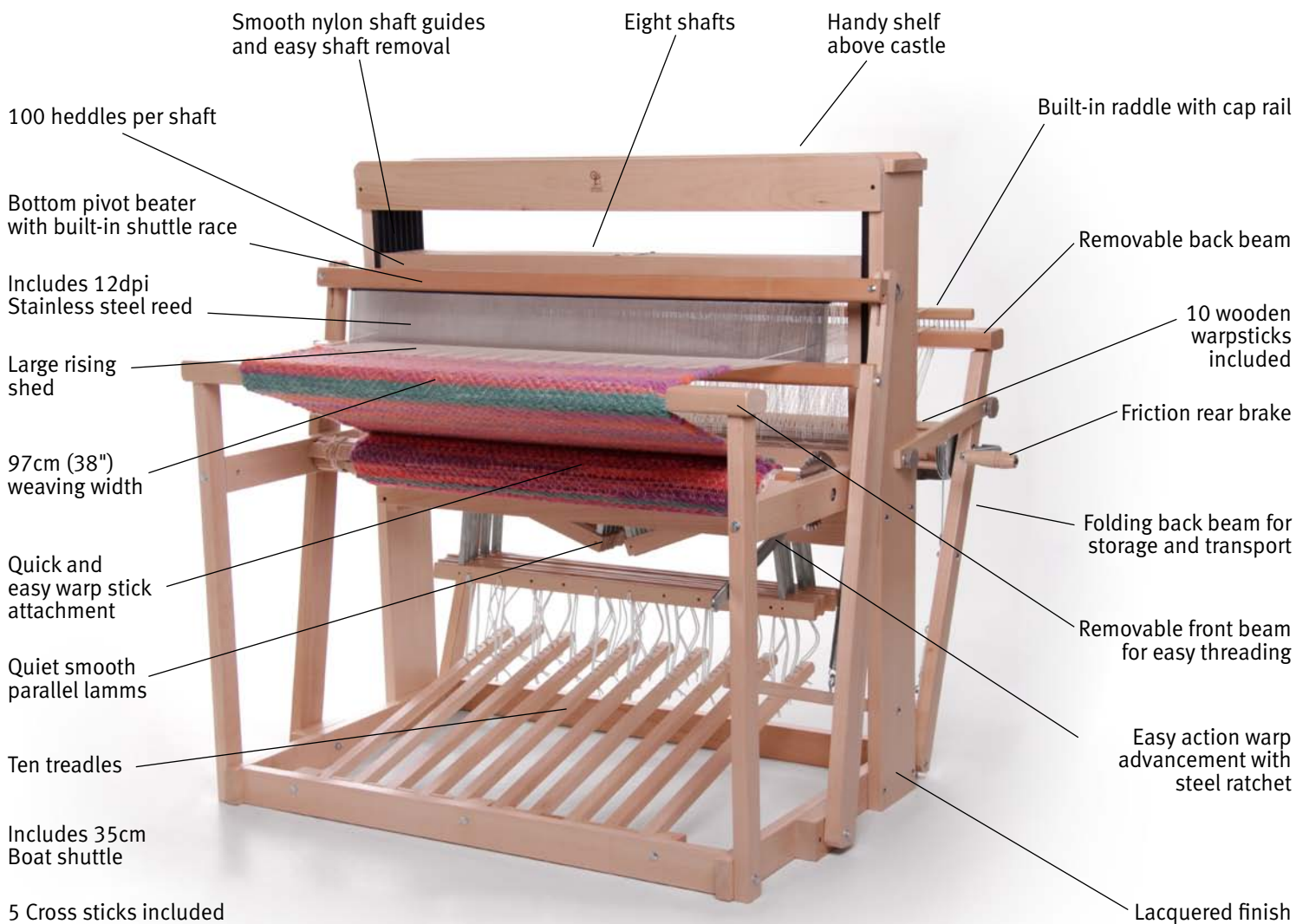


Ashford Handicrafts Limited
415 West Street, PO Box 474,
Ashburton, New Zealand
Phone +64 3 308 9087 Fax +64 3 308 8664
Email sales@ashford.co.nz Web www.ashford.co.nz

ashford
WHEELS & LOOMS



Features and Specifications



Convenient, smooth warp tension and advancement control while seated, with foot operated friction rear brake and front steel ratchet.

Fold in back beam, with or without warp, for moving or storage.

