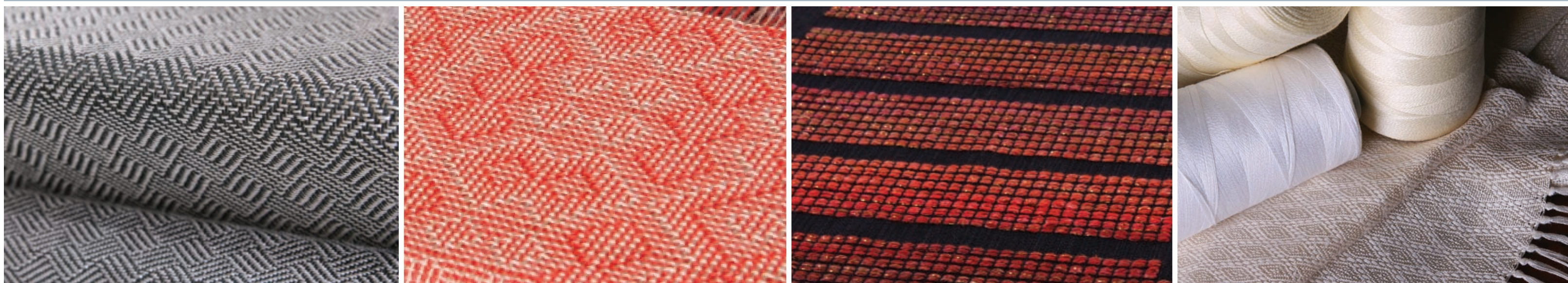


ASHFORD KATIE LOOM

Relax and enjoy creating unique fabric



Ashford weaving looms - effortless, dependable, trusted around the world for over 75 years. Models to suit every lifestyle.



katie table loom

Eight harness, compact, portable loom. Perfect for workshops, sampling, travel and fun. Flip beater back for easy threading. Overhead beater with automatic bounce back. Includes stainless steel reed 10dpi (40/10), step-by-step instruction booklet, texpolv heddles, threading hooks, 2 shuttles and carry bag. Lacquered.

Extra reeds 6, 8, 10, 12, 16dpi.

Weaving width 30cm (12")
Folded height 47cm (18½")
Folded width 47cm (18½")
Folded depth 27cm (10½")
Weight 6.5kg (14¼lb)

aShford
WHEELS & LOOMS

3 easy steps to fold



Handy carry bag included.

accessories

raddle

Steel pins spaced 12.5mm (½in) apart.
Lacquered silverbeech hardwood.

The perfect accessory for your new Katie loom...



warping frame (small)

Small warping frame holds 4.5m (14½ft) warps.
Lacquered finish.

