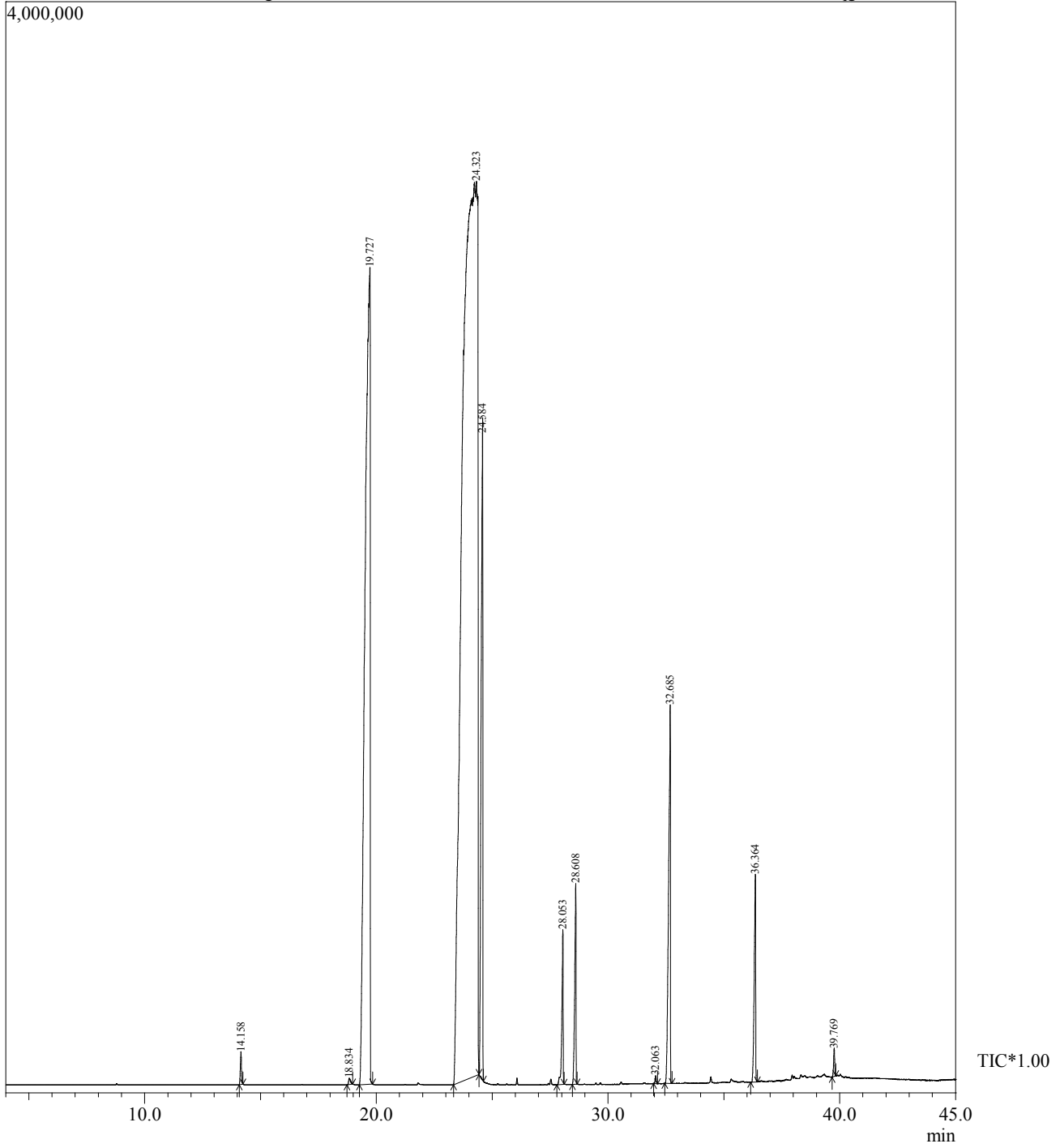


Sample Information

Analyzed by : \$Admn.\$  
Analyzed : 4/30/2016 10:22:47 AM  
Sample Type : \$Organic\$  
Sample Name : Groundnut Oil  
Method File : D:\GCMS\GCMS METHOD\Organic\FAME on RTX-5 MS.qgm

Chromatogram D:\GCMS\GC-MS DATA\Essential oils\FL\26.4.2016\Groundnut Oil.qgd



## Peak Report TIC

Peak#	R.Time	Area	Area%	Name
1	14.158	411695	0.18	Heptadecanoic acid methyl ester
2	18.834	128680	0.06	9-Hexadecanoic acid, methyl ester (Z)
3	19.727	46038582	20.50	Hexadecanoic acid, methyl ester/Palmitic acid, methyl ester
4	24.323	149964250	66.77	9-Octadecenoic acid (Z) methyl ester
5	24.584	11782899	5.25	Methyl stearate
6	28.053	2179703	0.97	cis-11-Eicosenoic acid, methyl ester
7	28.608	2867686	1.28	Methyl 18-methylnonadecanoate
8	32.063	96529	0.04	Methyl eicosenoate
9	32.685	7475520	3.33	Behenic acid methyl ester
10	36.364	3309050	1.47	Tetracosonic acid methyl ester
11	39.769	344757	0.15	Tricontanoic acid methyl ester
		224599351	100.00	