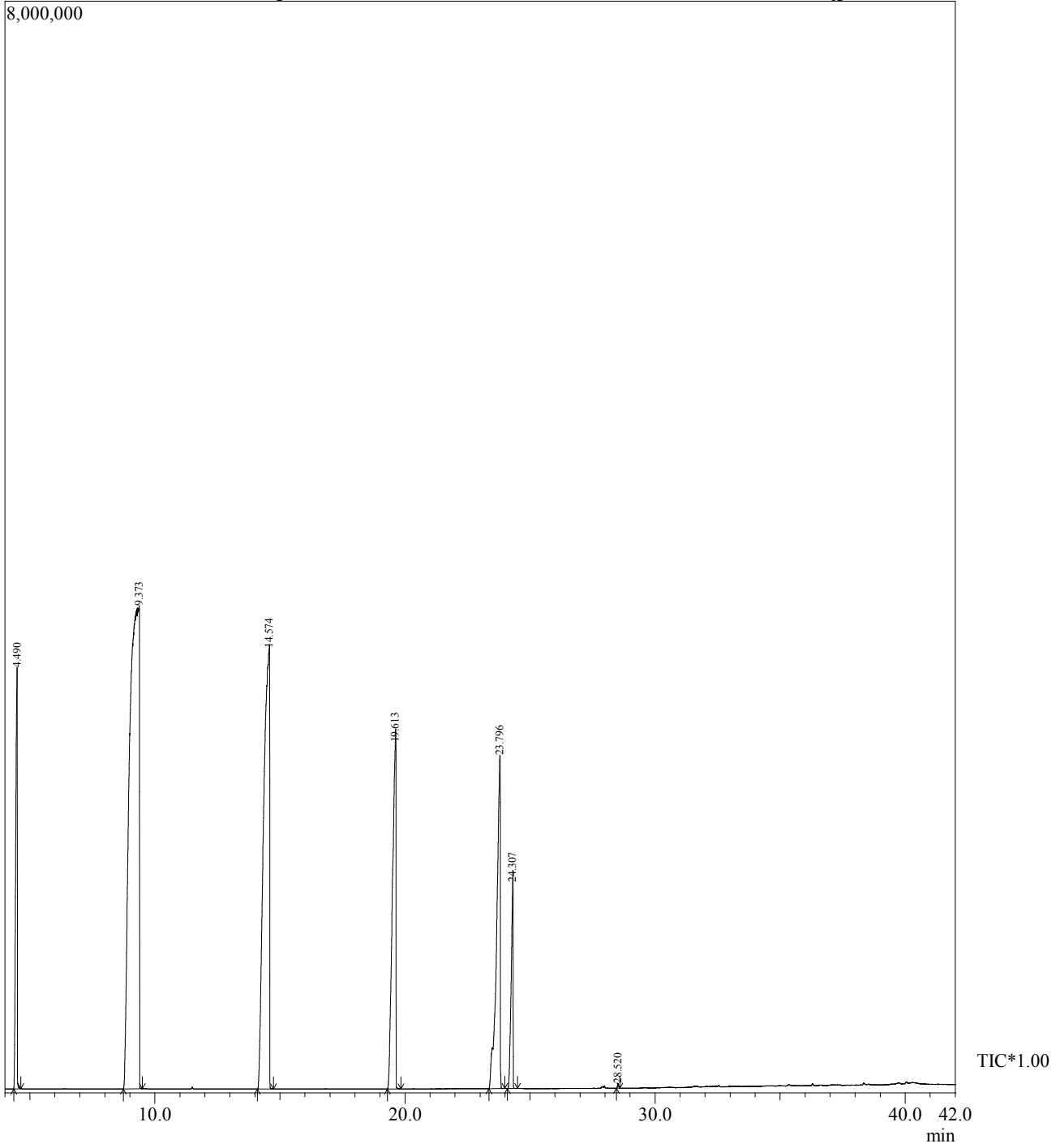


Sample Information

Analyzed by : \$Admn.\$
Analyzed : 4/30/2016 8:35:31 AM
Sample Type : \$Organic\$
Sample Name : Coconut oil
Method File : D:\GCMS\GCMS METHOD\Organic\FAME on RTX-5 MS.qgm

Chromatogram D:\GCMS\GC-MS DATA\Essential oils\FL\26.4.2016\Coconut oil.qgd



Peak Report TIC

Peak#	R.Time	Area	Area%	Name
1	4.490	13362224	6.08	Decanoic acid, methyl ester/Capric acid methyl ester
2	9.373	95244431	43.33	Dodecanoic acid methyl ester/Lauric acid methyl ester
3	14.574	53709939	24.44	Methyl tetradecanoate/Myristic acid, methyl ester
4	19.613	25033604	11.39	Hexadecanoic acid, methyl ester/Palmitic acid, methyl ester
5	23.796	24147209	10.99	9-Octadecenoic acid, methyl ester/Methyl 9-octadecenoate
6	24.307	8194484	3.73	Methyl stearate
7	28.520	114119	0.05	Tricosonic acid methyl ester
		219806010	100.00	