


CERTIFICATE OF ANALYSIS

SAMPLE	Coconut Oil (Virgin) (Cocos nucifera)
CUSTOMER	
CERTIFICATION DATE	21 July 2016
CUSTOMER LOT/BATCH No.	VC046 - 0516
LABORATORY REFERENCE	ARL162528
JOB No.	A161135

TEST	SPECIFICATION BP 2016	RESULTS	TEST METHOD
	Area %		
Caproic acid*	≤ 1.5	0.62	ARL-TM149
Caprylic acid*	5.0 – 11.0	8.21	
Capric acid*	4.0 – 9.0	5.90	
Lauric acid*	40.0 – 50.0	48.74	
Myristic acid*	15.0 – 20.0	19.12	
Palmitic acid*	7.0 – 12.0	7.48	
Stearic acid*	1.5 – 5.0	2.52	
Oleic acid*	4.0 – 10.0	5.89	
Linoleic acid*	1.0 – 3.0	1.34	
Linolenic acid*	≤ 0.2	nd	
Arachidic acid*	≤ 0.2	0.07	
Eicosenoic acid*	≤ 0.2	0.03	

* Assay by GC (FID detection – area percent report)
 nd denotes not detected

.....daleapawm/s.....
MS DALE SAVINS
SENIOR ANALYTICAL OFFICER



MR ASHLEY DOWELL
MANAGER - ARL

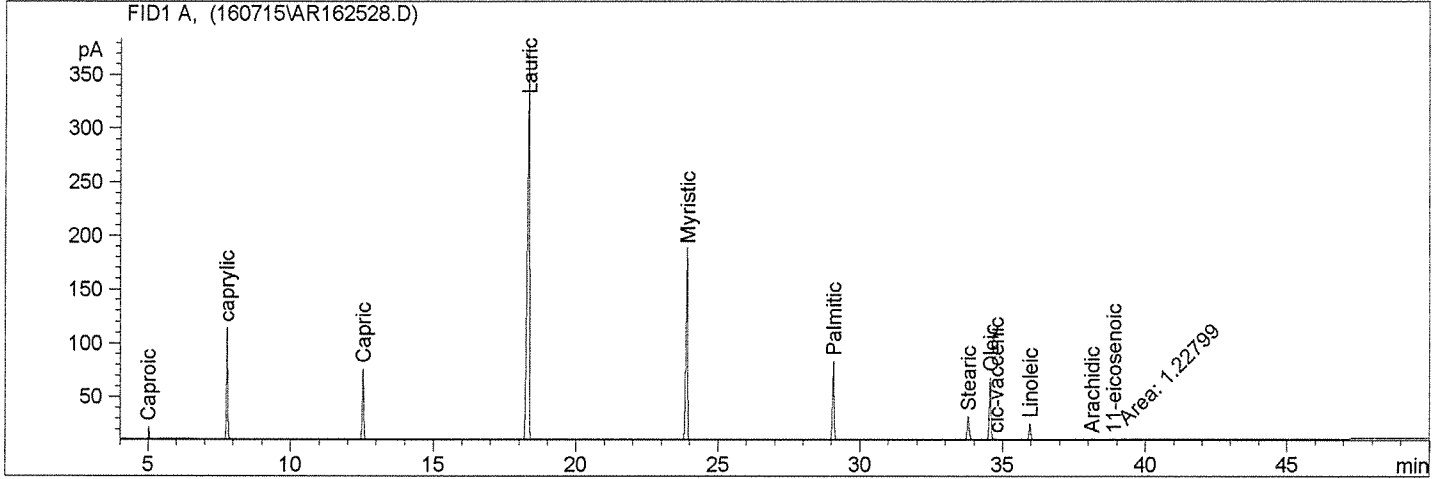
```

=====
Injection Date   : 7/15/2016 7:06:15 PM          Seq. Line :    7
Sample Name     : Coco oil VC046                Location  : Vial 5
Acq. Operator  : CJ                            Inj       :    1
                                                Inj Volume: 1 µl

Acq. Method    : D:\METHODS\QAMETH~1\FAMES35L.M
Last changed   : 5/6/2016 12:07:02 PM by CJ
Analysis Method: D:\METHODS\QAMETH~1\FAMES35L.M
Last changed   : 7/18/2016 12:01:19 PM by CJ
                (modified after loading)

```

FAMES BPX70



```

=====
                          Area Percent Report
=====

```

```

Sorted By           :      Signal
Calib. Data Modified :      7/18/2016 12:01:25 PM
Multiplier          :      1.0000
Dilution            :      1.0000
Use Multiplier & Dilution Factor with ISTDs

```

Signal 1: FID1 A,

Peak #	RetTime [min]	Type	Width [min]	Area [pA*s]	Area %	Name
1	5.009	BB	0.0368	24.99381	0.62157	Caproic
2	7.772	BB	0.0494	329.97437	8.20617	caprylic
3	12.545	BB	0.0568	237.45068	5.90519	Capric
4	18.346	BB	0.0752	1960.19556	48.74833	Lauric
5	23.919	BB	0.0668	768.83453	19.12023	Myristic
6	29.079	BB	0.0648	300.72903	7.47886	Palmitic
7	33.807	BB	0.0752	101.52080	2.52473	Stearic
8	34.585	BV	0.0626	236.73309	5.88734	Oleic
9	34.769	VP	0.0650	2.64750	0.06584	cis-vaccenic
10	35.972	BB	0.0591	54.04209	1.34398	Linoleic
11	38.134	PB	0.0782	2.70259	0.06721	Arachidic
12	38.887	MM	0.0689	1.22799	0.03054	11-eicosenoic

```
Totals :                      4021.05204
```

```
Results obtained with enhanced integrator!
```

```
*** End of Report ***
```