

CONTENTS

Safety Precautions	2
Packing List	3
External Sensor Exploded View	5
Monitor Installation.....	6
External Sensor Installation	7
External Sensor Battery Replacement	8
Driving Checking	9
USB Charging Socket	9
Monitor Features	10
Temperature Query	12
Monitor Button Features	13
Pressure Unit Switching	13
High Pressure Alarm Value Setting (Factory Default 46 Psi)	14
Low Pressure Alarm Value Setting (Factory Default 26 Psi)	15
Enter Code Learning Mode	16
Exit Code Learning Mode	18
Top Reasons of Leaking in Nonstandard Tire Valves	19
FAQ	20

Safety Precautions

Before Install this system, please read below notes carefully.

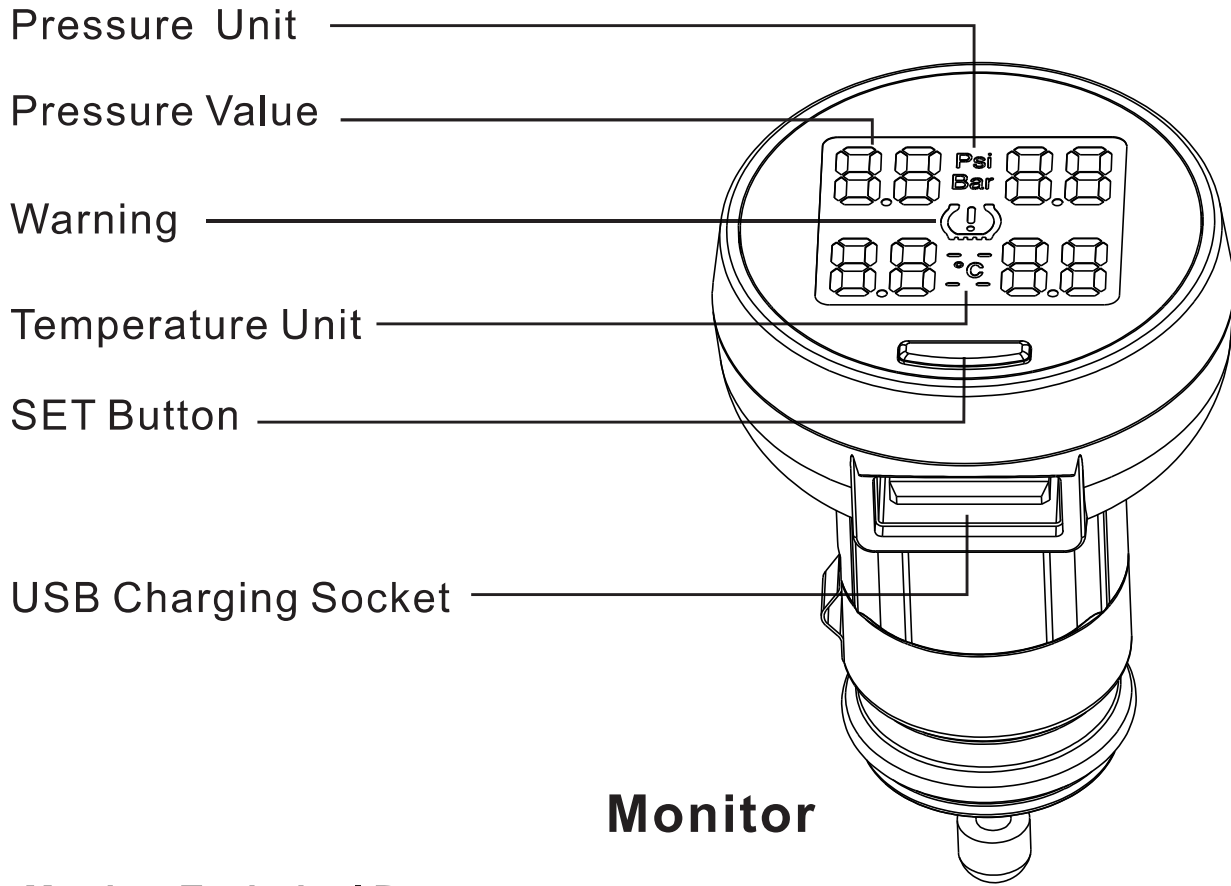
1. Tire safety can not only rely on this system, the user should inspect the tire regularly in case of nail sticking or any breaking.
2. Please park the vehicle and check as soon as the system starts warning.
3. This system can not predict the suddenly damage by outside force.
4. Please don't operate this system when driving. The monitor can only work correctly when power is on.
5. The sensor battery lifetime is related to vehicle driving mileage, and it can be shortened when working under -20°C temperature.
6. The tire temperature will get higher when driving, and the tire pressure will be 0.1- 4 Psi higher accordingly.
7. Please do not clean or soak the sensor by water or other chemical liquid.
8. The suggested tire pressure and the maximum pressure values are marked in side of tire or the car manual, please adjust the right alarm value after confirm with the tire or car factory or the technician.

The applicable model for this system is car with tire pressure under 6.8Bar / 99Psi and 12V power supply, such as Sedan, SUV, MPV and Sports Car, etc. . Please do not use it for vehicle with tire pressure above 6.8Bar / 99Psi, such as Truck, Trailer, Bus, Recreation Vehicle, Pickup Trucks and so on.

The system wireless transfer distance is 400cm without obstacle.

- ⚠ It is recommend that install monitor and make it power on before sensors.
- ⚠ The monitor and sensors are already matched with each other before leaving the factory, no need to do code learning again after installation.

Packing List



Monitor Technical Parameters

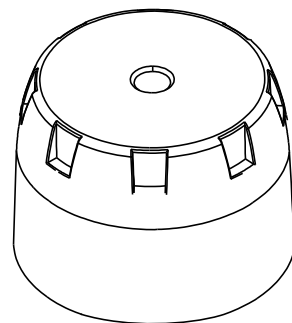
Input Voltage: 5V

Operating Current: < 6.5mA

Operating Temperature: - 40°C ~ +85°C

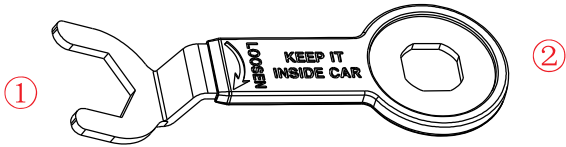
Operating Humidity: 5 ~ 98%

External Sensor 4pcs



Packing List

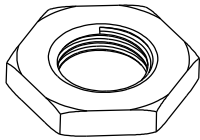
Tools and Accessories



Combination Wrench

① For locking the sensor with hexagonal nut

② For fixing the sensor base when unscrew the sensor cover to replace battery



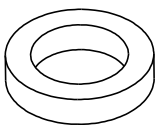
Hexagonal Nut 5pcs (one for backup)



Ring Needle (for replacing the silicon seal ring)

① For pulling out the old silicon seal ring

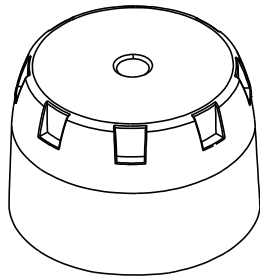
② For setting the new silicon seal ring



Silicon Seal Ring 4pcs (for backup)

If the silicon seal ring is damaged, please replace it by the backup ring in case of leaking.

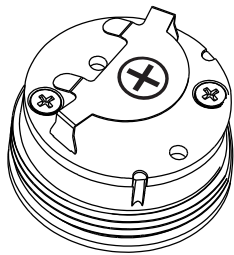
External Sensor Exploded View



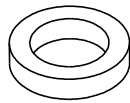
cover



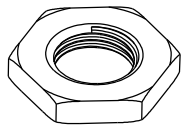
Button Battery CR1632



Sensor



Silicon Seal Ring



Hexagonal Nut

External Sensor Technical Parameter

Sensor Size: 20x20x16mm

Sensor Weight: <10g

Pressure Range: 0Psi-99Psi / 0Bar-6.8Bar

Battery Model: CR1632

Static Current: < 0.7 μ A

Battery Lifetime: about 1 to 2 year

Operating Current: < 15mA

Operating Temperature: -20 $^{\circ}$ C ~ +85 $^{\circ}$ C

Pressure Error: \pm 1Psi / \pm 0.1Bar

Temperature Error: \pm 2 $^{\circ}$ C

Operating Humidity: 5~98%

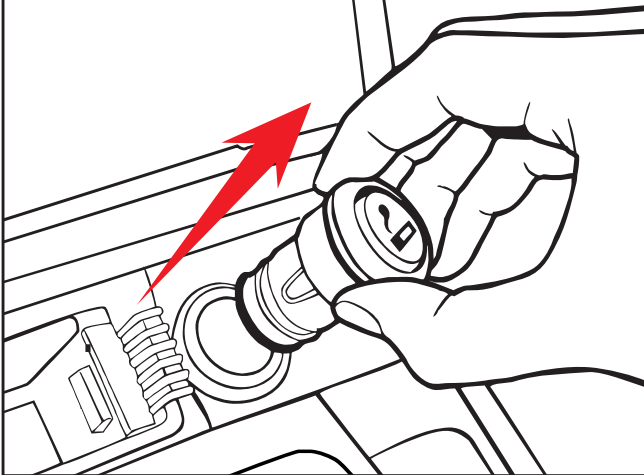
Working Frequency: FSK 433.92MHz

Monitor Installation

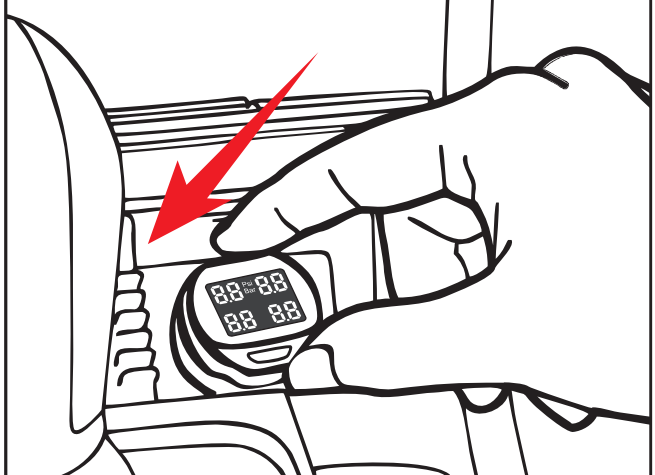
Important:

Before install the sensors, monitor must be plugged in and car key turned from ACC.OFF to ACC.ON.

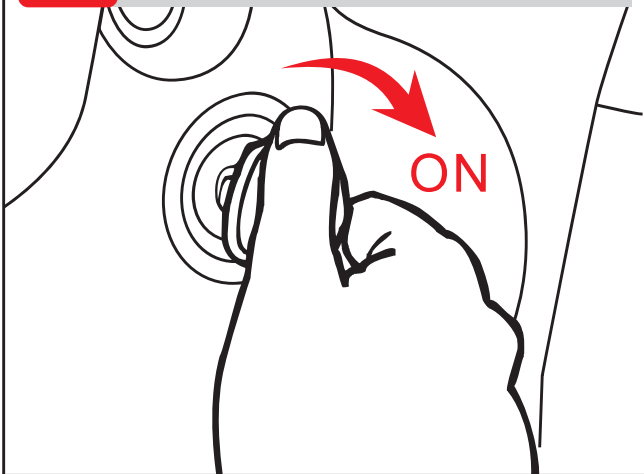
1 Pull out the cigarette lighter



2 Plug in the monitor



3 Turn ACC ON

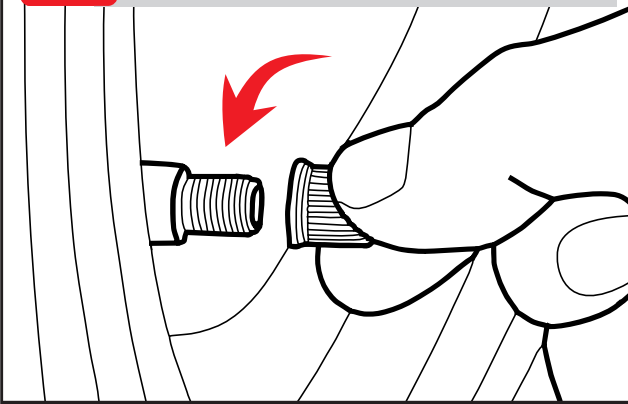


4 Monitor power on and start to work.

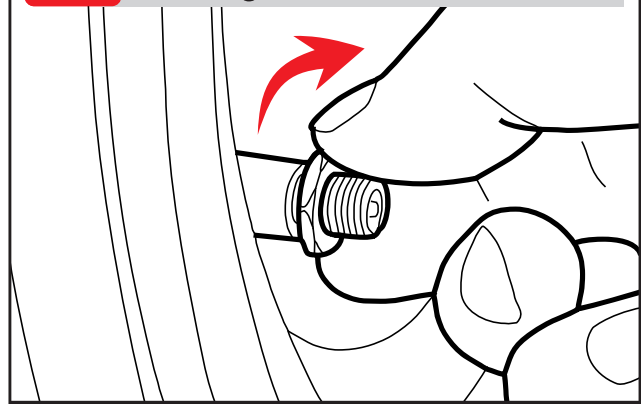


External Sensor Installation

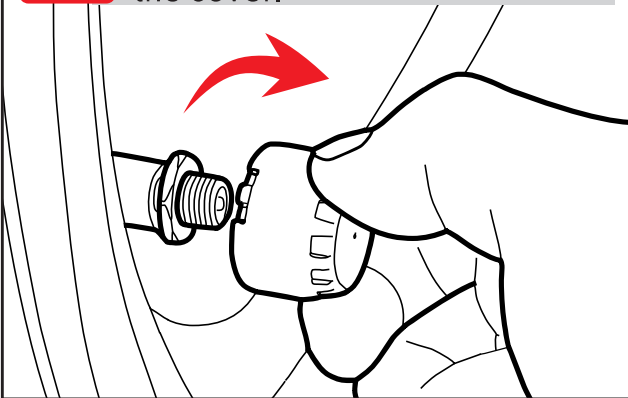
- 1** Backout dustproof cap of tire valve.



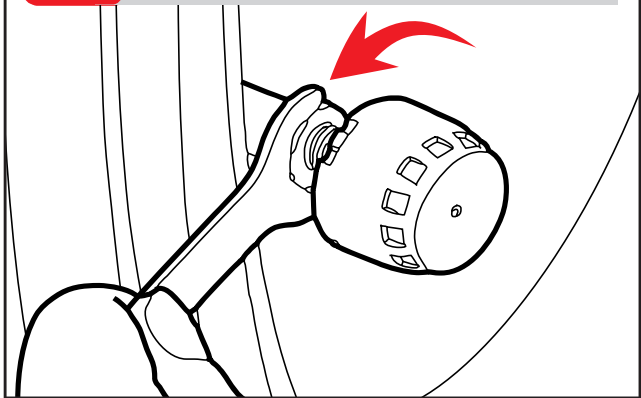
- 2** Screw-in the hexagonal nut.



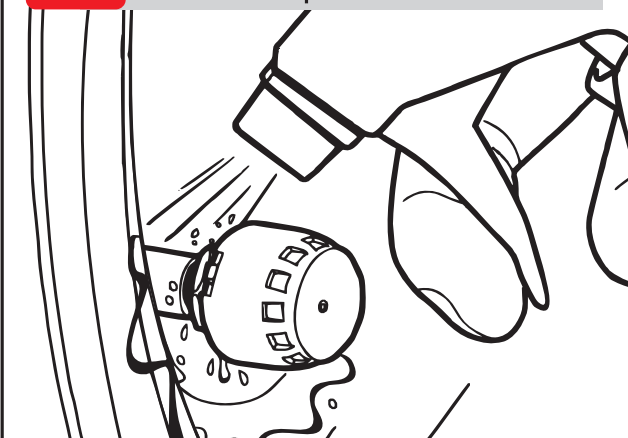
- 3** Screw-in the sensor in proper tire according to the mark in the cover.



- 4** Tighten the sensor by nut wrench in reverse direction.



- 5** Check if it is leaking with soapsuds.



FL: Front-left tire
FR: Front-right tire
RL: Rear-left tire
RR: Rear-right tire

Note:

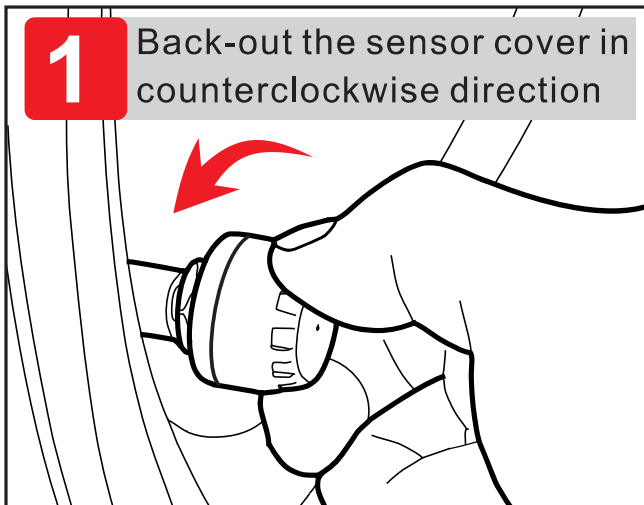
Please clean the surface of tire valve before install the sensor.

The hexagonal nut is used for fixing the sensor and avoid of stealing, please loosen it with the special wrench before inflating.

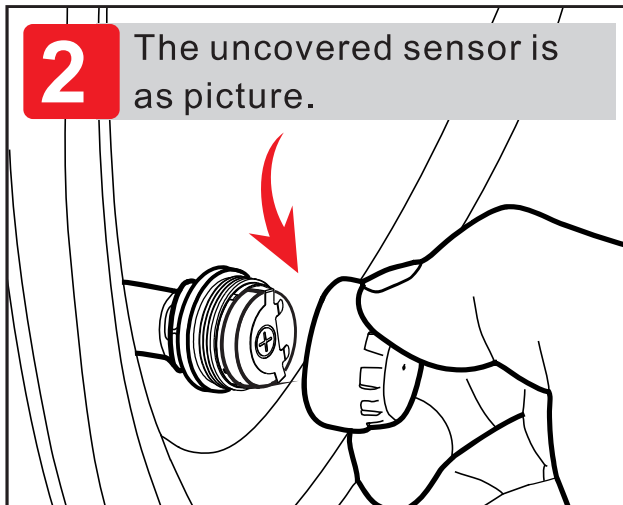
External Sensor Battery Replacement

* No need to take out the sensor from tire if it is installed already, just unscrew the sensor cover from the valve to replace battery

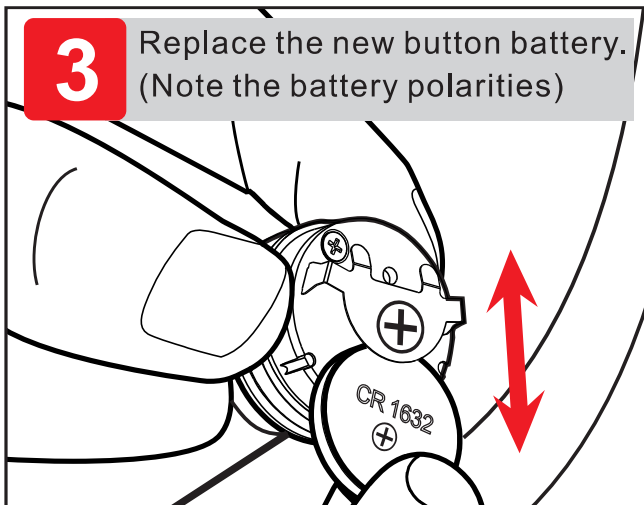
1 Back-out the sensor cover in counterclockwise direction



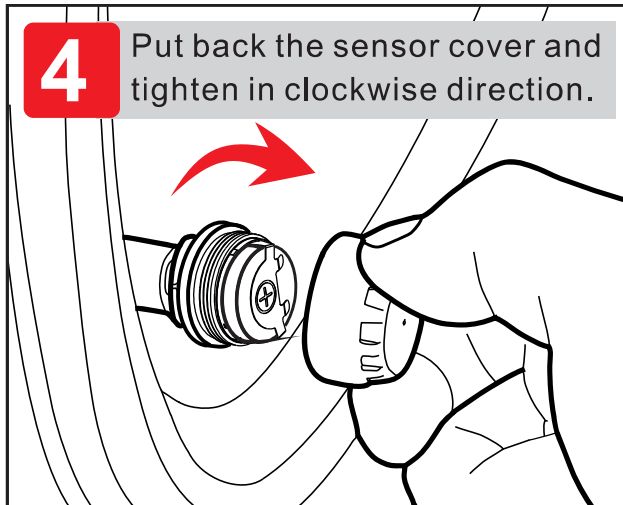
2 The uncovered sensor is as picture.



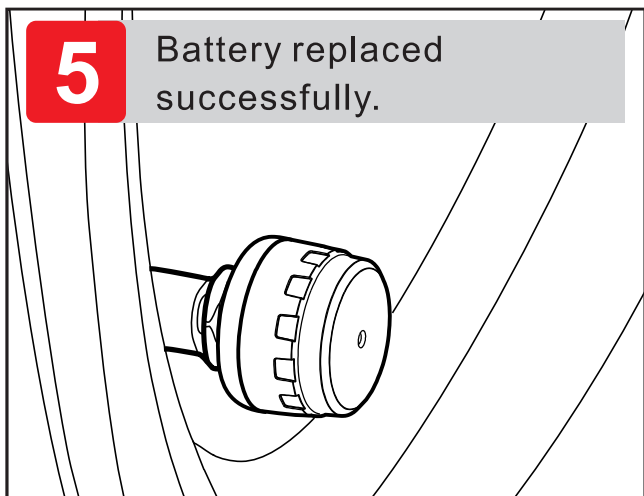
3 Replace the new button battery. (Note the battery polarities)



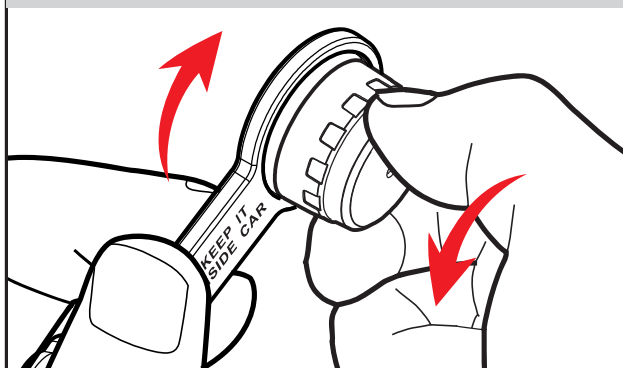
4 Put back the sensor cover and tighten in clockwise direction.



5 Battery replaced successfully.



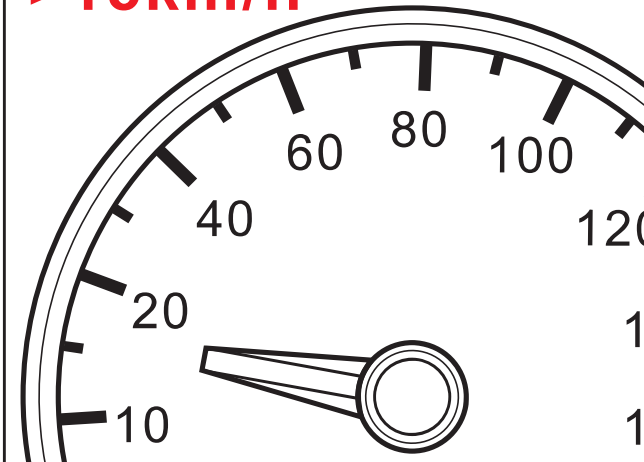
If the sensor is not installed in tire valve, please use the special wrench to loosen and tighten the sensor cover.



Driving Checking

- 1** When the driving speed is up to 15km/h, the tire data will be updated automatically.

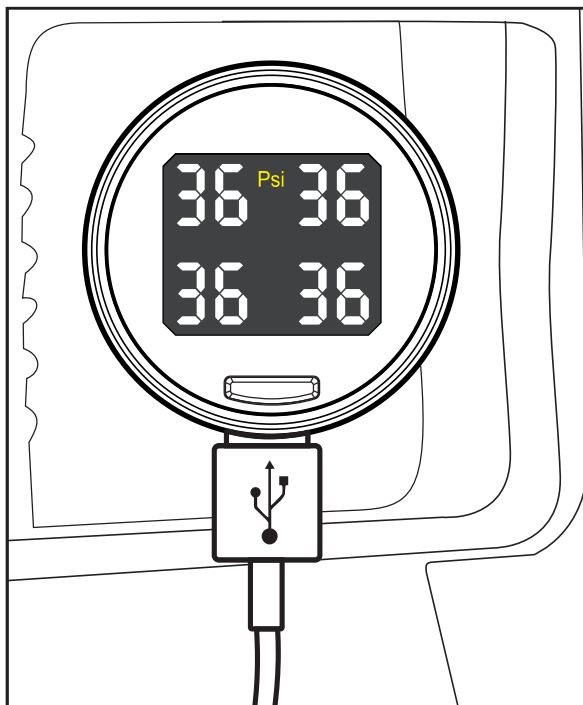
>15km/h



- 2** If all the tire pressure data is shown, it means the system installed and working properly.



USB Charging Socket



With display power on

There is a USB socket in monitor, the user can charge some portable products such as mobile phone or MP3 while the monitor is working.

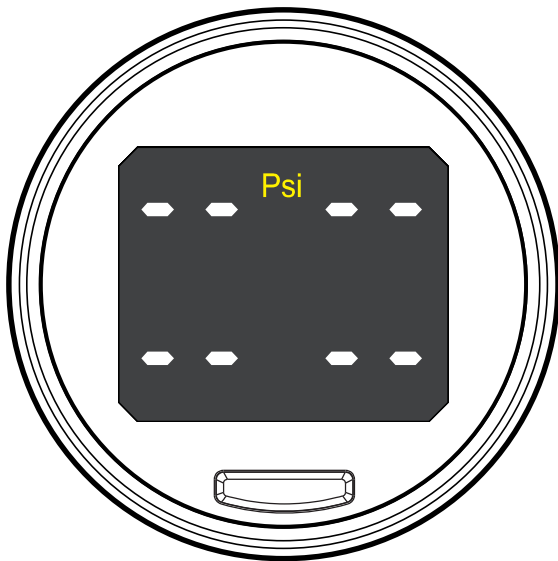
Output voltage: 5V

Output current: 1A

Monitor Features

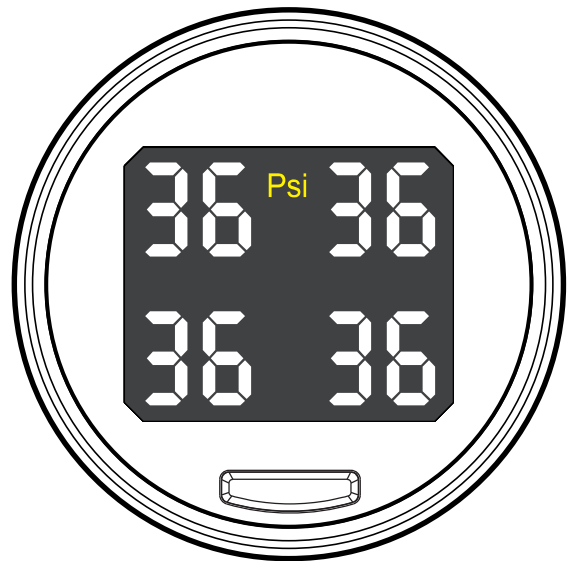
Parking Display

Start the car engine, display show as follow:



Driving Display

When the driving speed is up to 15km/h, the tire data will be updated automatically.



Sensor Disabled



High Temperature Warning



The tire temperature is higher than 65°C.
Temperature display range:-40°C~ +99°C

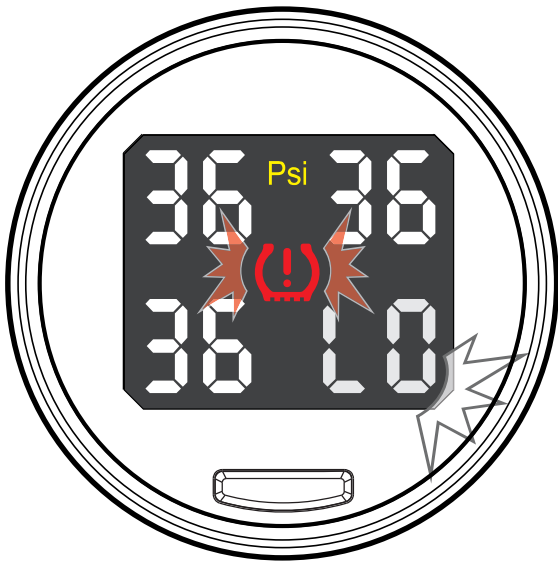


Monitor Features

Sensor Battery Run Out of Power

🔊 Bi--Bi--

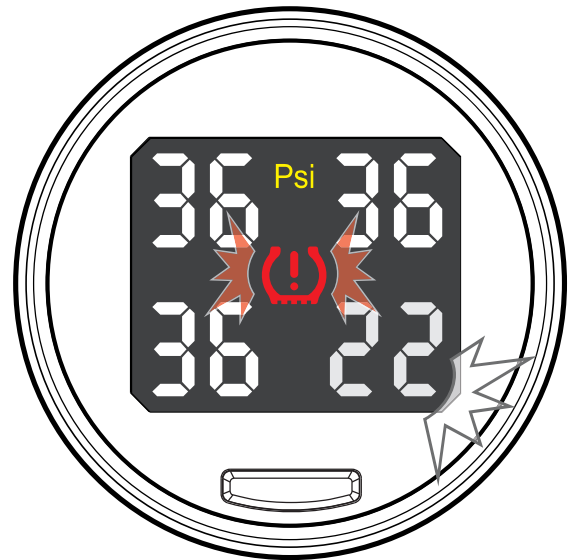
External sensor battery lifetime is about 2 years.



Leaking Warning

🔊 Bi-Bi-Bi-Bi-Bi-

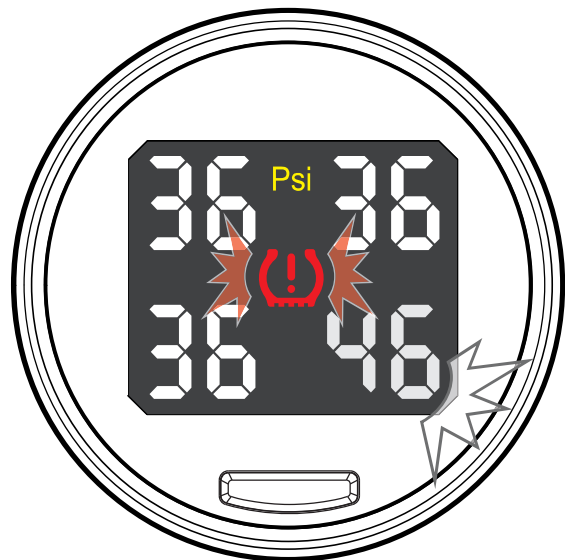
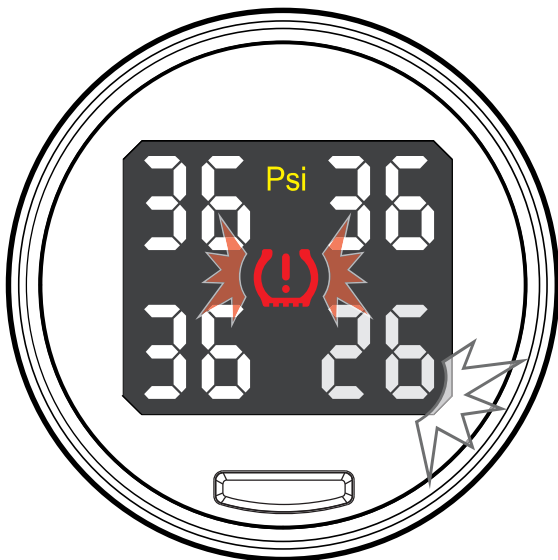
It means the tire may be stuck by nail or the valve is aged.



Abnormal Pressure Warning

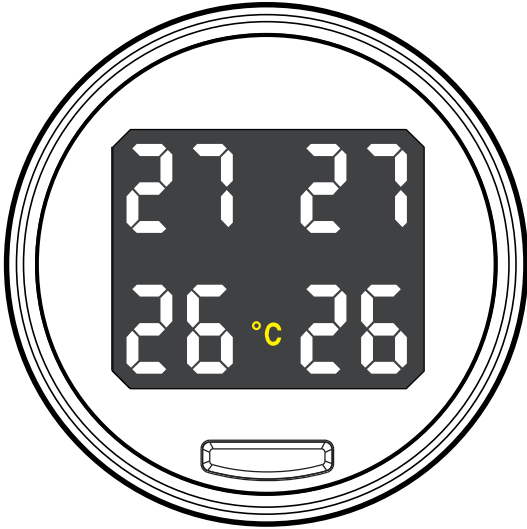
🔊 Above 46 Psi: Bi-Bi-Bi-Bi-
Below 26 Psi: Bi-Bi-Bi-

The pressure is out of normal range 26- 46Psi (Factory Default Pressure Range)

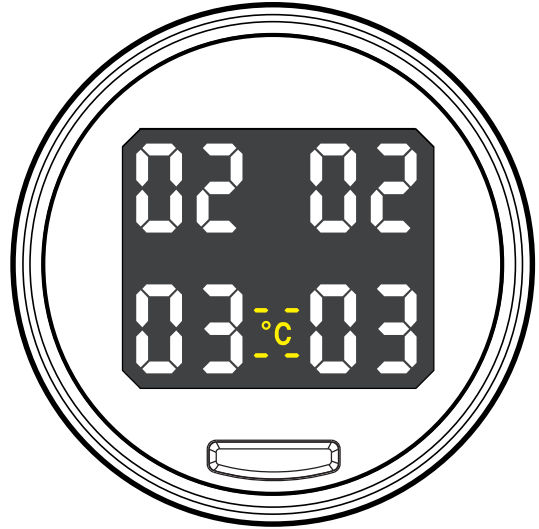


Temperature Query

Press the SET button once shortly, the monitor will beep once and show tire temperature values as picture , and then return to tire pressure values after 10 seconds automatically.

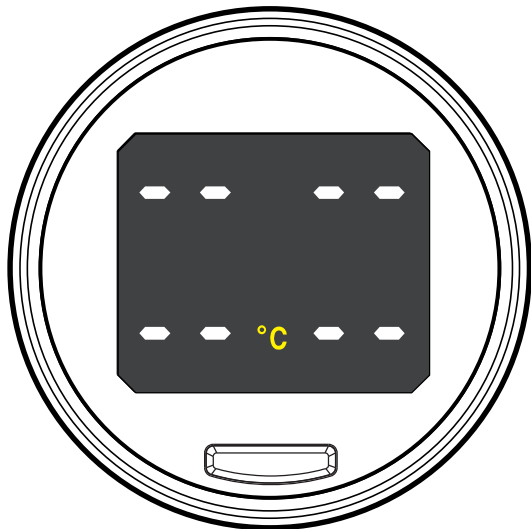


The display will show temperature unit **°C** if the tire temperature is above 0°C, and will show **-°C** if it is under 0°C.



Temperature Range

Display will show temperature values as picture when power on.



- The detected temperature range is from -40 to 90°C.
- The display will update the temperature values only if driving speed is up to 15km/h.



Monitor Button Features

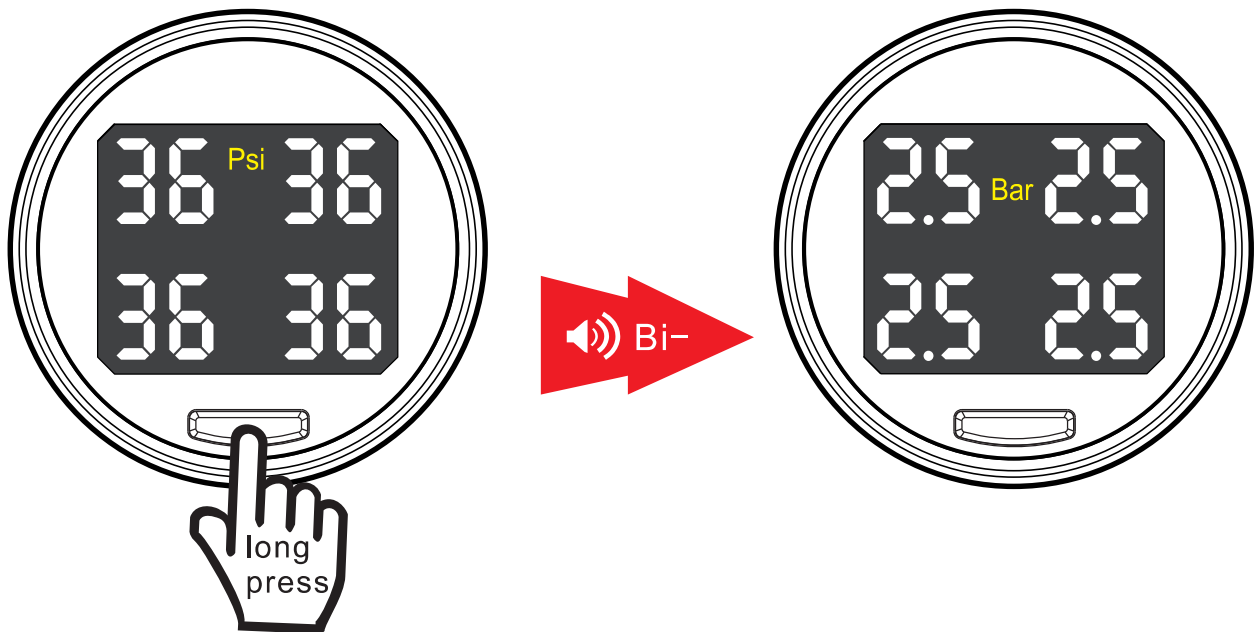
Press SET button once shortly, the display will show the tire temperatures.

Press SET button and hold on:

- Until beep once and release --- Pressure unit switching (Psi/Bar)
- Until beep twice and release --- High pressure alarm value setting (Factory default 46Psi)
- Until beep thrice and release --- Low pressure alarm value setting (Factory default 26Psi)
- Until beep 4 times and release --- Enter code learning mode
- Until beep 5 times and release --- Restore to factory settings

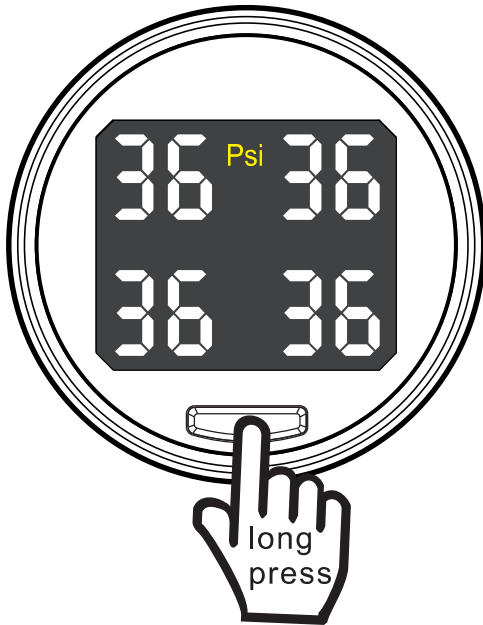
Pressure Unit Switching

ACC ON, after monitor is power on, whenever press the SET button and hold on until beep once and release, the pressure unit can be switched between “Bar” and “Psi”. The factory default pressure unit is Psi.

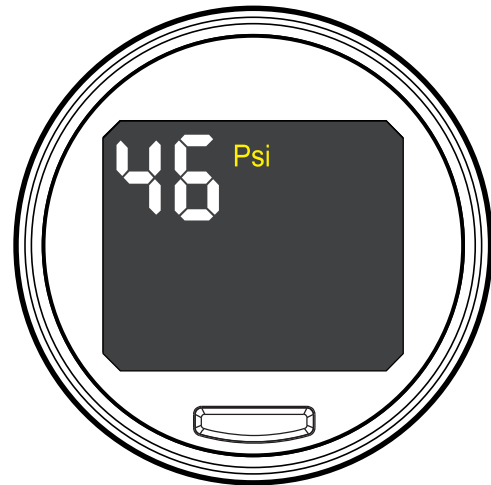


High Pressure Alarm Value Setting (Factory Default 46 Psi)

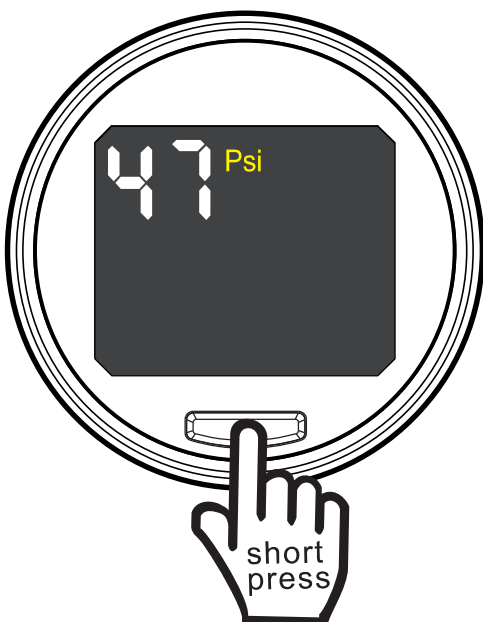
- 1** Press SET button and hold on until beep twice and release, enter high pressure alarm value setting.



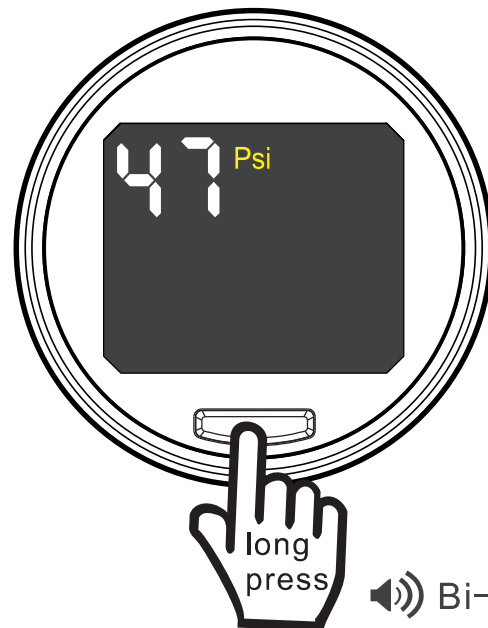
- 2** The display show the current alarm value



- 3** By each press SET button the alarm value increase 1Psi and will be cycled between 36 and 51Psi.

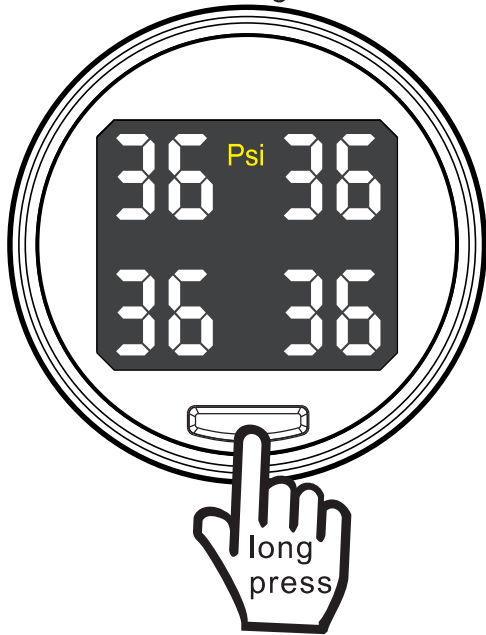


- 4** Press SET button and hold on until beep twice and then release to confirm the setting and exit.



Low Pressure Alarm Value Setting (Factory Default 26 Psi)

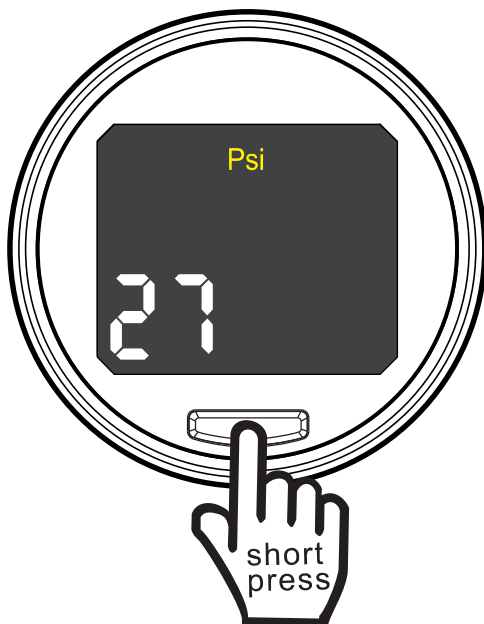
- 1** Press SET button and hold on until beep thrice and release, enter low pressure alarm value setting.



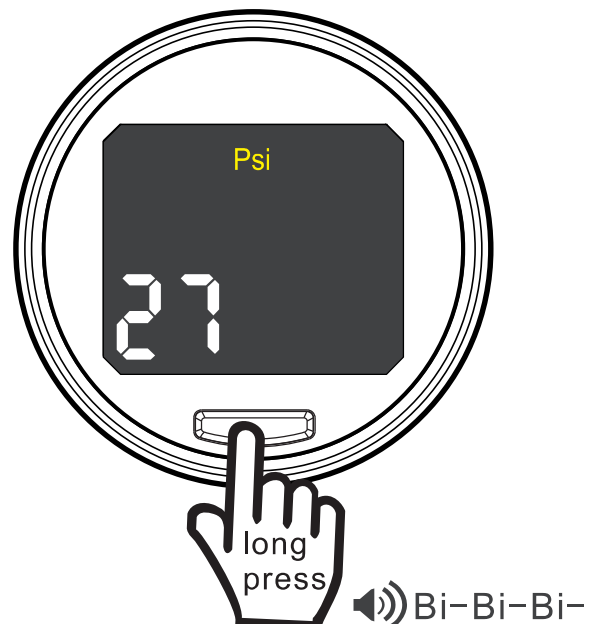
- 2** The display show the current alarm value



- 3** By each press SET button the alarm value increase 1Psi and will be cycled between 11 and 35Psi.



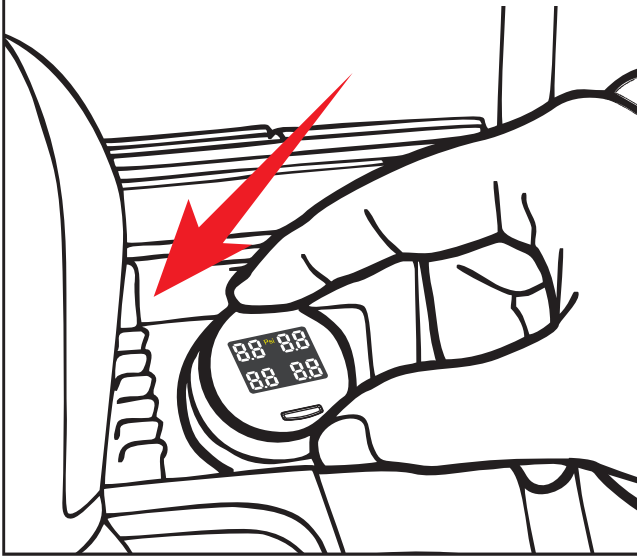
- 4** Press SET button and hold on until beep thrice and then release to confirm the setting and exit.



Enter Code Learning Mode

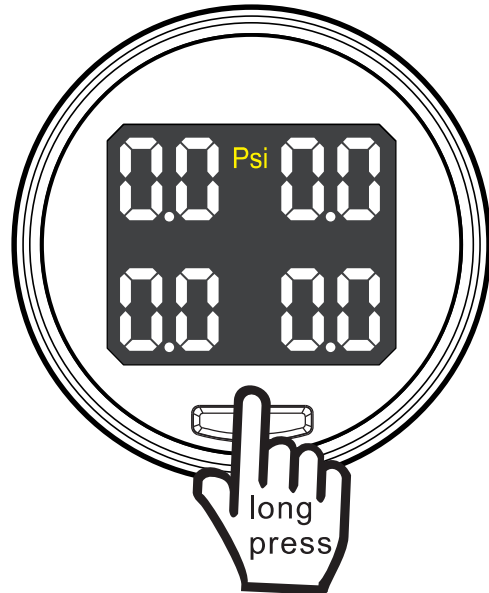
1

Before install the sensors, turn car key from ACC OFF to ON, plug the monitor in the cigarette lighter till it is working



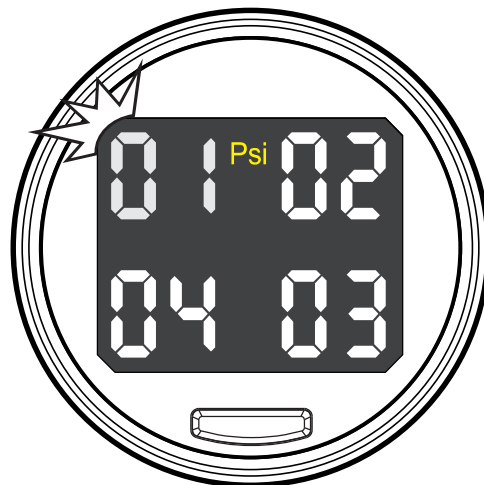
2

Press SET button and hold on until the display beep 4 times and release



3

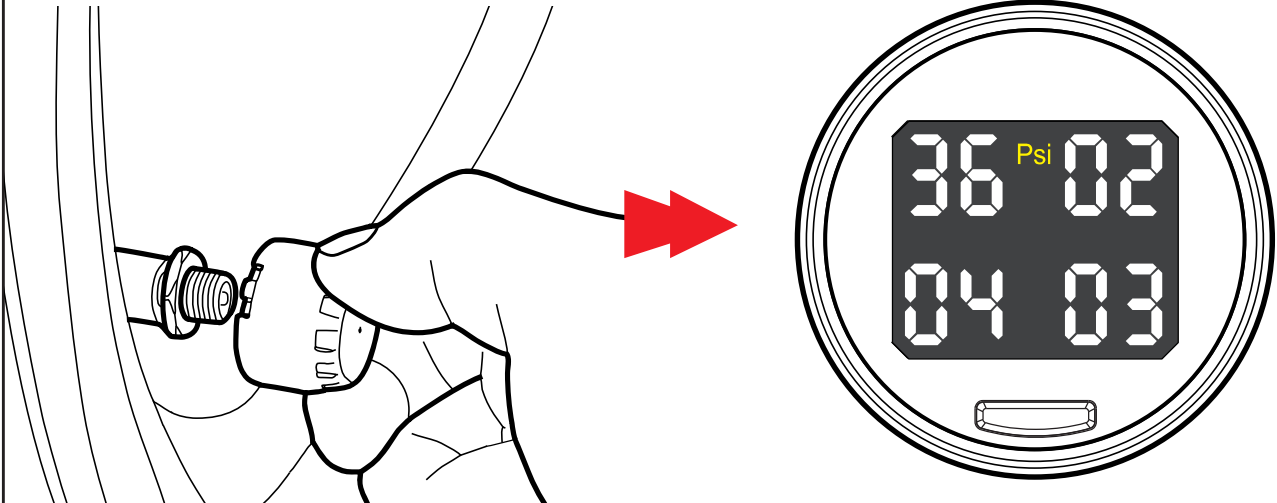
The display show "01-02-03-04" and 01 icon start to flash, it means front-left sensor can be learned right now.



Enter Code Learning Mode

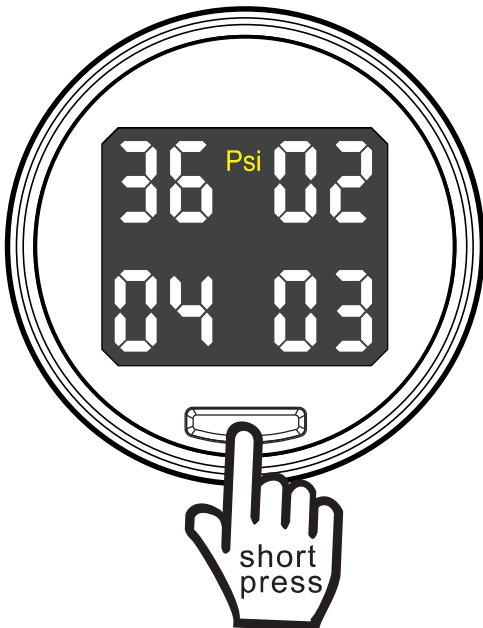
4

Install the front-left sensor, the monitor will beep once and show current tire pressure after 10 seconds, which means the sensor is already learned successfully



5

Press SET button once shortly to enter the next sensor code learning.



The display 02 start to flash, install the front-right sensor right now.

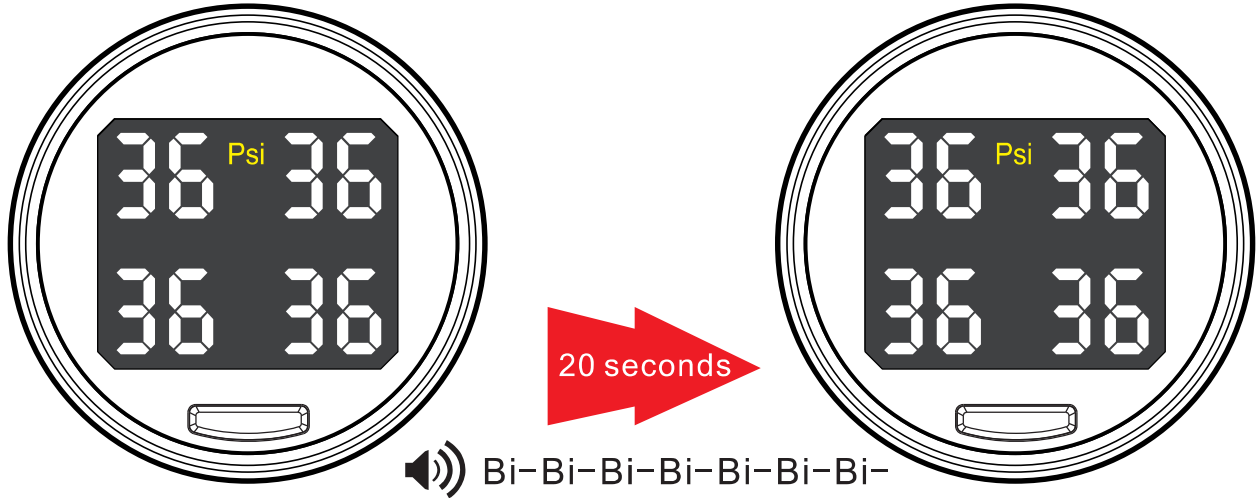


And repeat above steps for rest sensors.

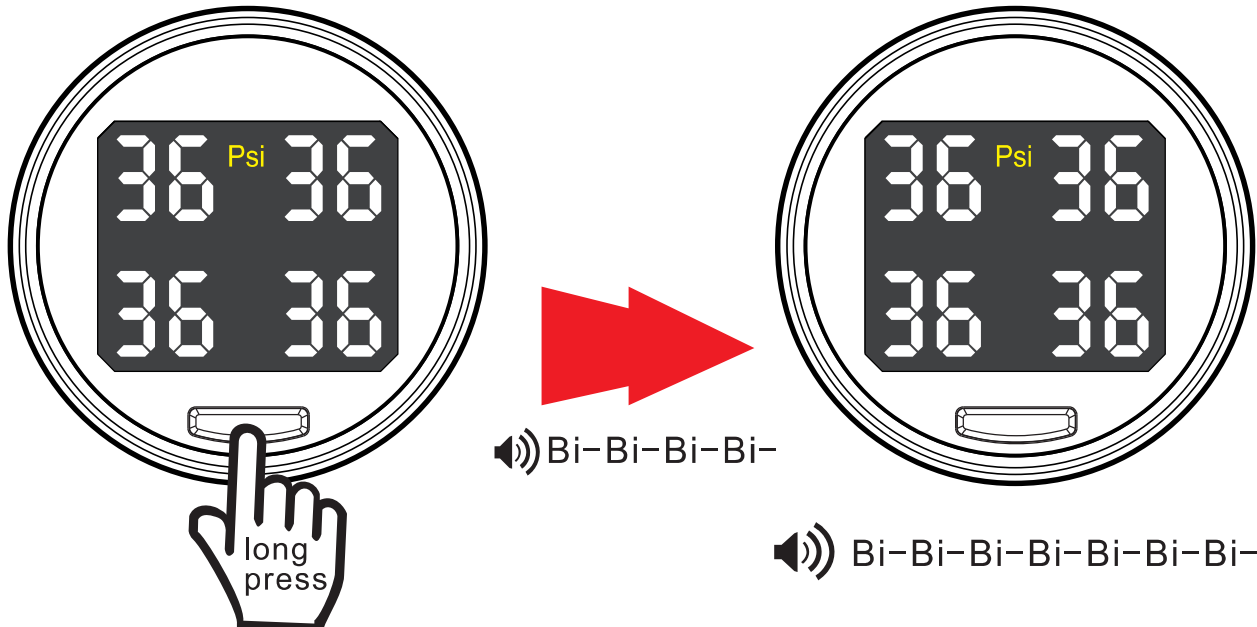
★ If there is more than one sensor need to be learned, repeat step 5 and 6.

Exit Code Learning Mode

- 1** After 4 sensors are learned successfully, the system will exit code learning mode after 20 seconds automatically, and the monitor will beep 7 times.



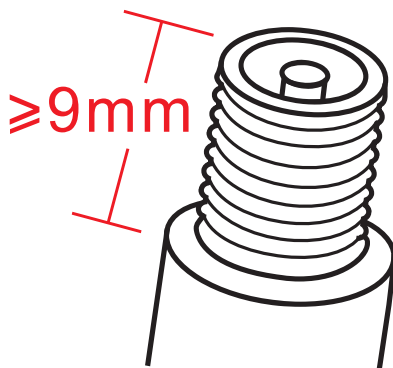
- 2** After 4 sensors are learned successfully, press SET button and hold on until beep 4 times and then release to exit code learning mode, and the monitor will beep 7 times.



Top Reasons of Leaking in Nonstandard Tire Valves

Standard Valve

- The valve core is even with the edge.
- The valve thread length $\geq 9\text{mm}$



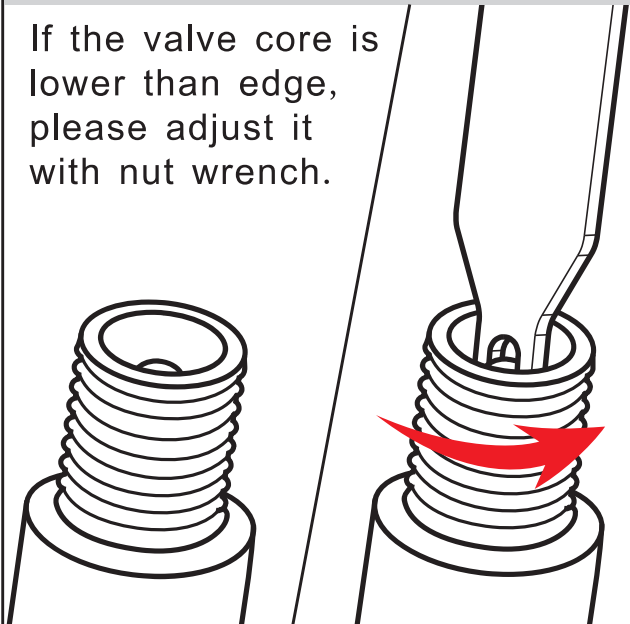
Leaking Reason 1 of Nonstandard Tire Valve

If the sensor is not installed in tire valve, please use the special wrench to loosen and tighten the sensor cover.



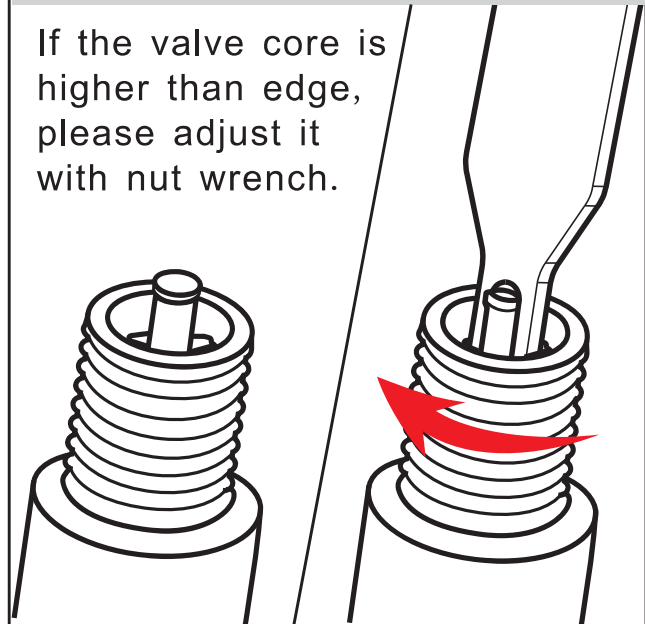
Leaking Reason 2 of Nonstandard Tire Valve

If the valve core is lower than edge, please adjust it with nut wrench.



Leaking Reason 3 of Nonstandard Tire Valve

If the valve core is higher than edge, please adjust it with nut wrench.



FAQ

Sensor Interface Leaking

It is usually caused by nonstandard tire valve, please replace it with a standard one in tire store.

Display Not Working

There is no 12V power in cigar lighter socket, please check related fuses.

Sensor Missing

Please buy sensor from our company and reset it.

Sensor Battery Out of Power

Please replace a new button battery CR1632

Tire Position Exchanging

The sensor must be exchanged according to the mark in the cover after exchange the tires position.

Monitor Not Working

- 1.If there is no 12V power in cigar lighter socket, please check related fuses.
- 2.Please contact the local distributor if the problem still exists after above checking.

Monitor Show Tire Data Discontinuously

- 1 . Check if there is DVR, e-dog or parking sensor nearby, please move them to 20cm far away from the monitor
- 2 . Check if there is connected wire nearby or the monitor set on the car audio speaker, please move it away from them.

Sensor Transmission Not Good

- 1 . Check if the sensor is installed in tire and near the monitor, because the sensor and monitor wireless transmission distance is limited.
- 2 . Check if the sensor battery CR1632 is installed. (External)
- 3 . Check if the sensor battery polarity is correct. (External)
- 4 . Check if the sensor battery is run out of power, please replace new one. (External)
- 5 . Please reinstall the sensor battery. After taking out the battery, wait for more than 10 seconds to reinstall it back, this will make sure the sensor is reset. (External)
- 6 . Check if there is some sensor from another system mixed in this one. Each sensor has a unique ID code, and the monitor can only recognize the sensor from this system.
- 7 . Please contact the local distributor if the problem still exists after above checking.

FAQ

Monitor Tire Pressure Show “0” and Warning

- 1 . Check if the sensor is installed properly.
- 2 . Please tighten the external sensor in the tire valve. Because the sensor can not detect the tire pressure if it is not contacted with valve core.

Monitor Show Nothing after Restart

The sensor can only detect and show new tire pressure and temperature value when the pressure is changed by over 1Psi / 0.1Bar, so just drive and speed up the car

The Backup Silicon Seal Ring Use

The backup silicon seal ring is for replacing the old one in sensors, because it will be aged which may cause leaking after using for about 2 years. The original sensor is already installed with a silicon seal ring before leaving the factory, please do not set one more.