

## EZ POWERSTEERING



## Installation manual JAGUAR E-TYPE SERIES I (1961-1968)

# Contents



1. EZ Powersteering, complete set
2. EZ unit
3. ECU
4. 6mm<sup>2</sup> wire
5. Speedsensor
6. Wire harness

1. Take the car for a testdrive and check the original steering system for faults. Also check the functions from steering column switches. When all OK continue with the conversion.
2. Locate an ignition switched plus wire (12V) and label this wire. This is needed to switch the EZ unit on/off. Disconnect battery earth afterwards.



- 3 Remove the horn button and steering wheel.



4. Remove both conical rings from the original steering shaft.



5. Remove the indicator switch from the original steering column.



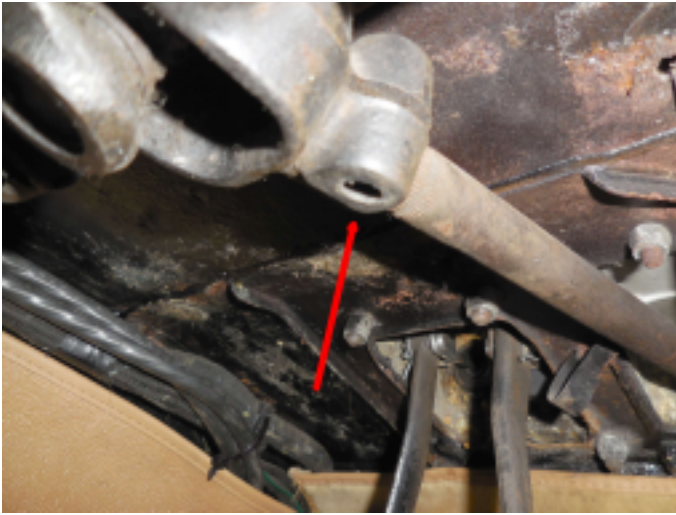
6. Remove the bolt from the indicator reset, the reset itself can be removed afterwards.



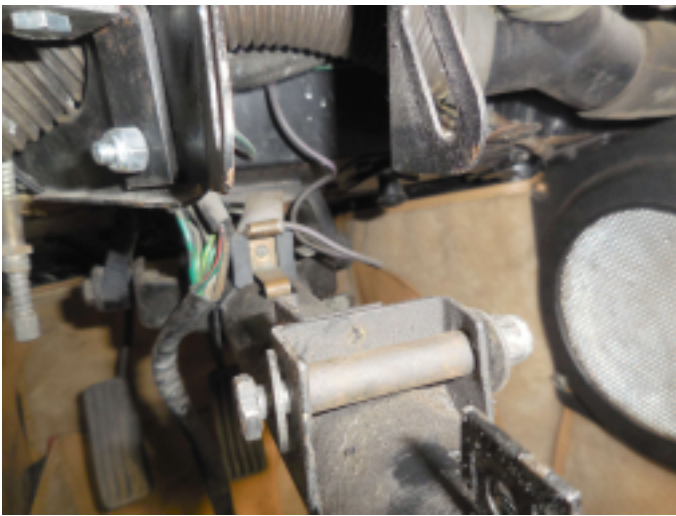
7. Remove the locking bolt from the steering shaft, the steering shaft itself can be removed afterwards.



8. Measure the distance between the original steering shaft and the dashboard.



9. Remove the bolt from the U-joint underneath the dashboard.



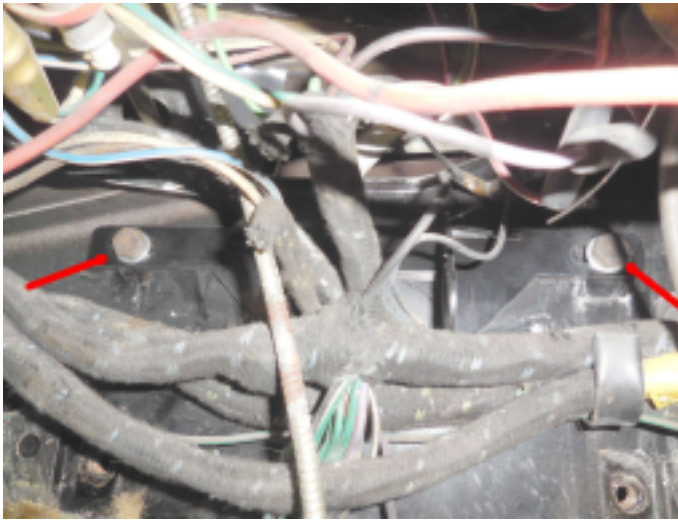
10. Remove the upper installation bolt from the original steering column



11. Remove the lower installation bolts from the original steering column.



12. The original steering column can be removed from the vehicle.



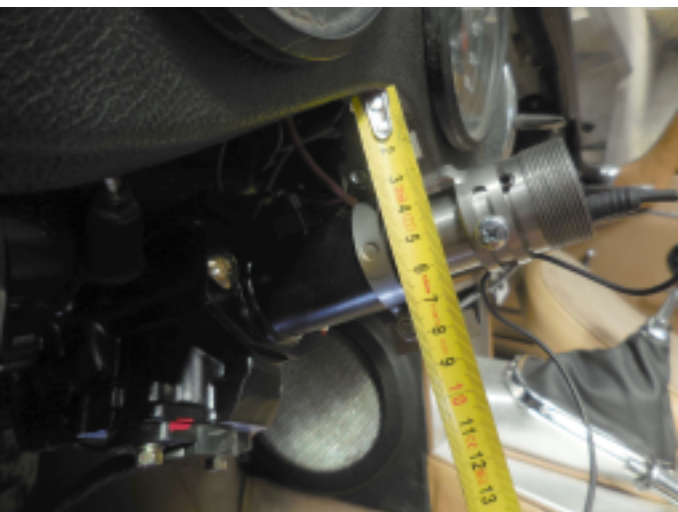
13. Install upper EZ bracket onto both original mounting points.



14. Install the speed sensor behind the speedometer, the cable can be fitted onto the sensor.



15. Install the EZ unit into the vehicle, first install it onto the lower mounting points (do not forget the U-joint). Now the column can be installed into the upper EZ bracket, which is previously installed (do not tighten it yet).

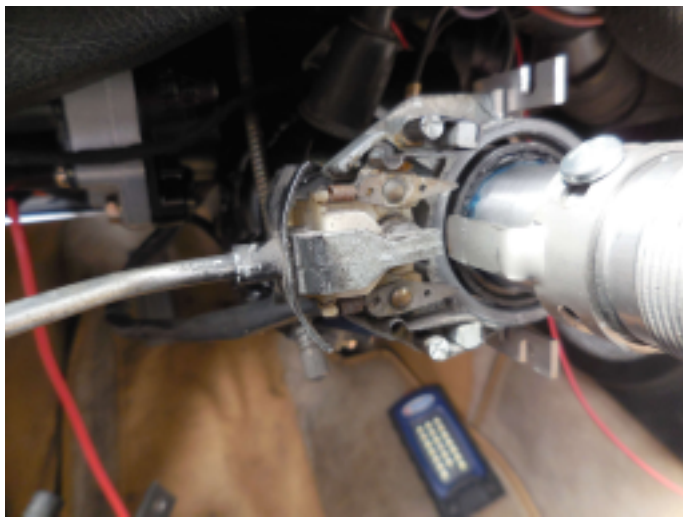


16. Check the distance between the dashboard and steering shaft (see point 8). Once the EZ unit is located at the right position, tighten all bolts (do not forget the U-joint).

Temporarily install the steering wheel and check if everything can turn freely!



17. Install the ECU in the vehicle.



18. Install the indicator switch assembly onto the EZ unit. Check the function from the reset afterwards. Adjust if needed.



14. Install the contact pin for the horn button. The electric wire can be connected with the small hex screw. The original (plastic) holder and spring can be reassembled onto the new pin. Install this complete assembly into the EZ unit.

15. Connect the EZ harness with the ECU.

- Connect the thick red wire (30+) through the fuseholder directly to the battery plus (12V).
- Connect the thin red wire with an ignition switched plus (12v), see point 2.
- Connect the black earth wire (31-) with an suitable earth point.
- Connect the speedsensor wiring with the EZ harness.



16. Install both conical rings on the EZ unit.



17. Install the steering wheel assembly.

18. Reconnect the battery earth.

19. After the ignition has been switched on, there must be a click noticeable from the ECU. The system now is operational, check this. After the ignition has been switched off the system shuts down with a delay from about 3 seconds, this is normal.

20. Take the car for a testdrive and recheck all systems.

