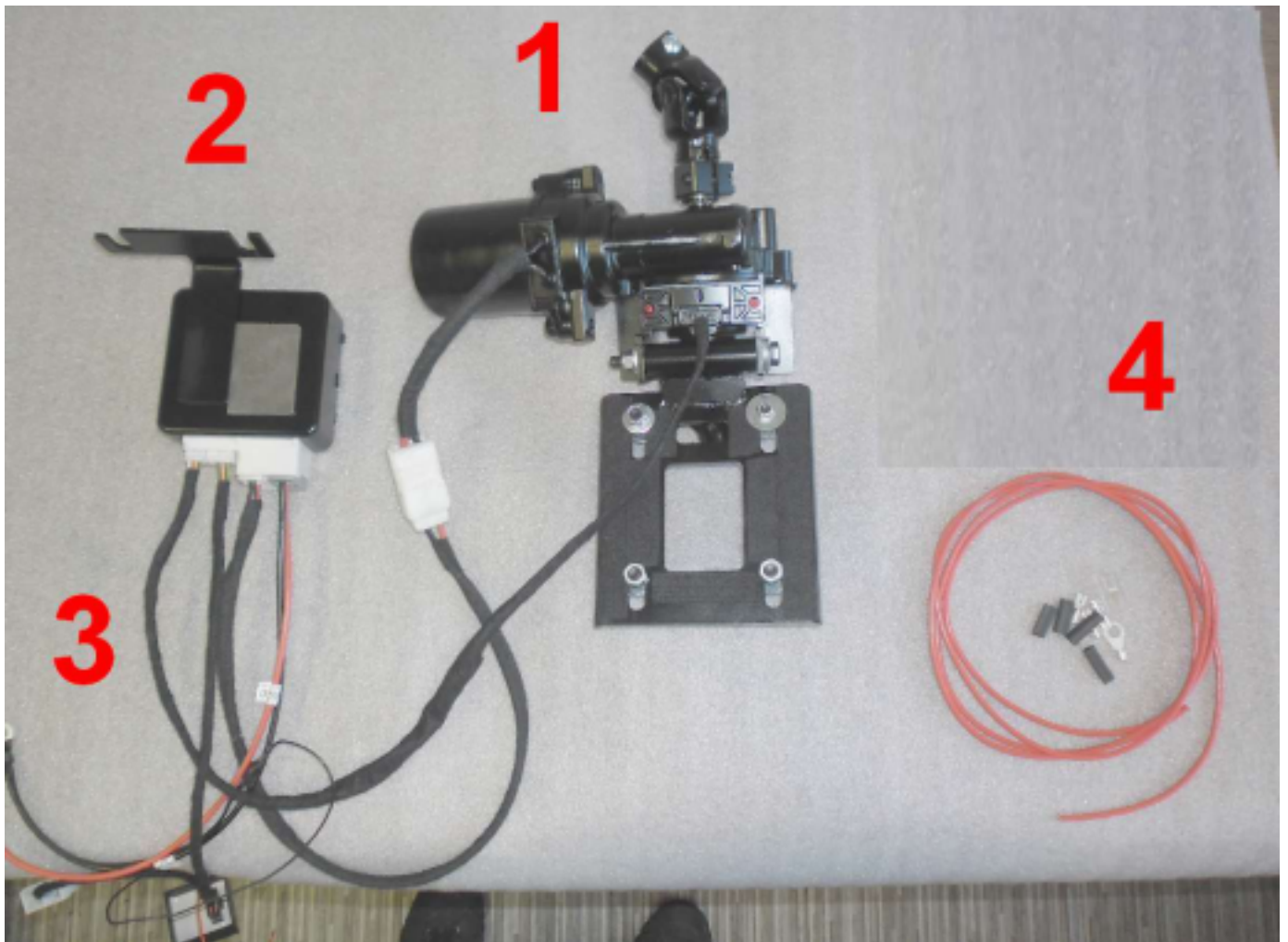


EZ ELECTRIC POWER STEERING



Installation manual
Fiat 124 Spider

Contents



1- Complete set.

2- ECU.

3- Wiring harness + controller and potentiometer.

4- Feed wire 6mm²

1. Check tire pressure and take the car for a testdrive, check the original steering system for faults, if all OK continue with the conversion.
2. Locate a ignition switched 12V plus and mark this wire. this is needed to switch the EZ unit on and off. Align the steering system to it's center position.



3. Disconnect the battery earth.



4. Remove the steering wheel.



5. Disconnect the steering column connectors (steering column- and ignition switch).



6. Remove the bolt which holds the U-joint to the steering column. Remove the 4 mounting bolts from the upper column and remove it afterwards.



7. To Create enough clearance for the EZ unit some excessive material needs to be removed, see photo for example. Use the EZ unit to determine the right location!



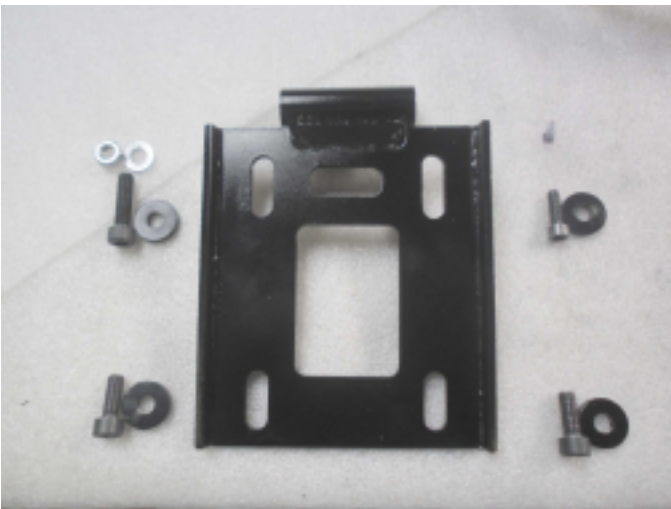
8. From the original fixing points there are 2 M6 threaded. One of them needs to be drilled to 8.5mm. See photo.



9. Install the EZ unit in the car and connect the output shaft/joint with the original steering shaft.



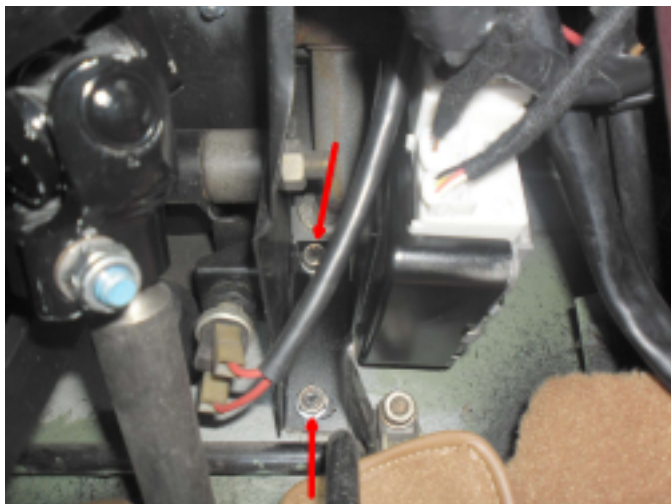
10. Connect the original U-joint from the upper column to the EZ unit.



11. Install the EZ mounting plate to the EZ unit.



12. The column can be fitted further on in the car, there are 3xM8 and 1x M6 bolts and washers used. Double check if all mounting bolts are tightened. Reconnect the disconnected connectors from the steering column.



13. Install the EZ ECU with it's bracket against the firewall.

14. Connect the EZ harness with the ECU, the remaining wires need to be connected like:

- Connect the thick red wire through the fuse holder directly to the battery plus.
- Connect the thin red wire with an ignition switched plus, (see point 2).
- Connect the black earth wire with an suitable earth point.

15. Reconnect the battery earth.



16. Install the steering wheel (wacht the right position).

17. After the ignition is switched on there is a click noticeable from the ECU, the system is now operational, check this. After the ignition has been turned off the system turns off with a delayment from a couple of seconds, check this!

18. When everything is OK, take the car for a testdrive and double check all systems.

