

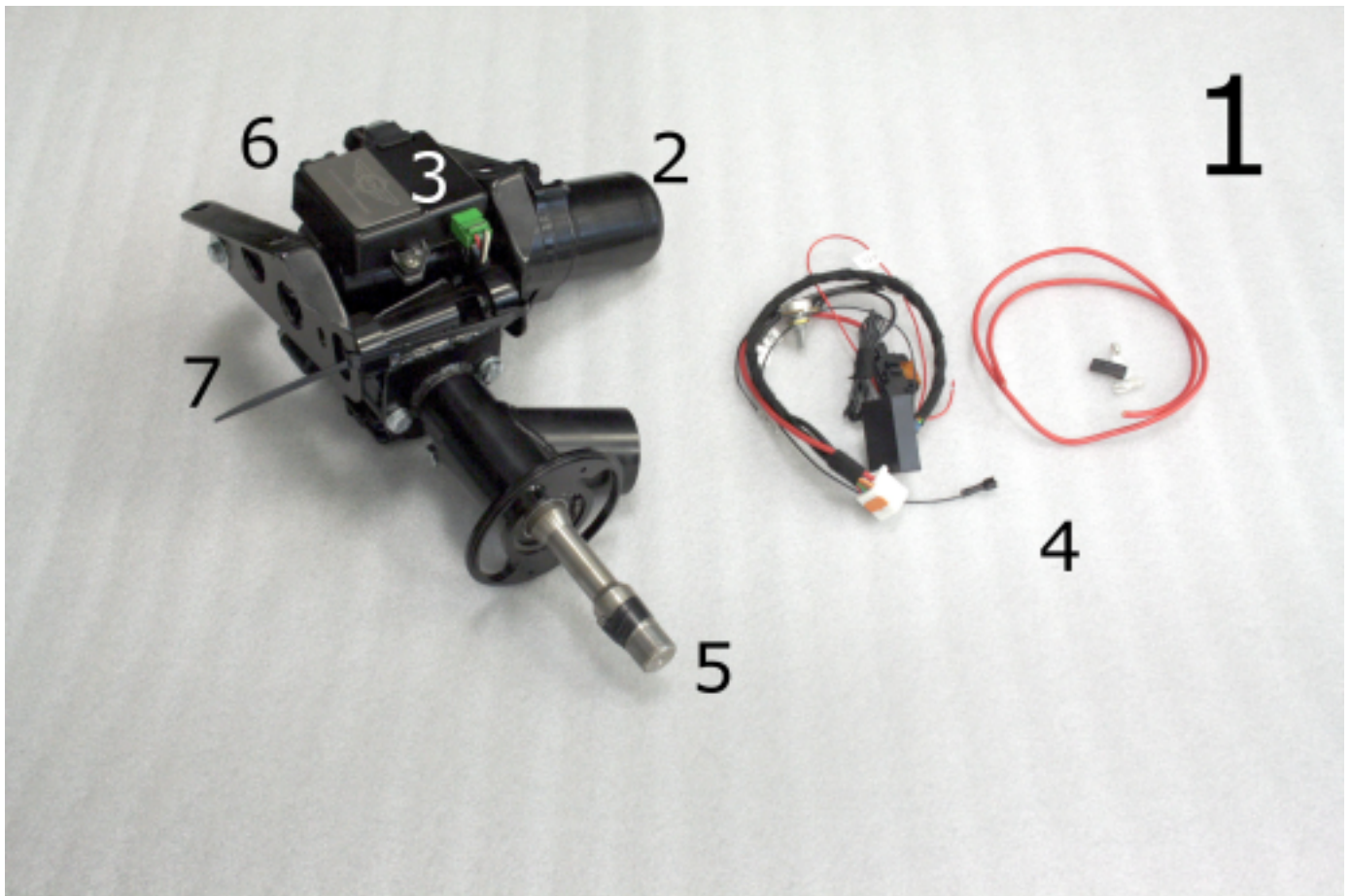
EZ POWERSTEERING



INBOUWHANDLEIDING FERRARI MONDIAL

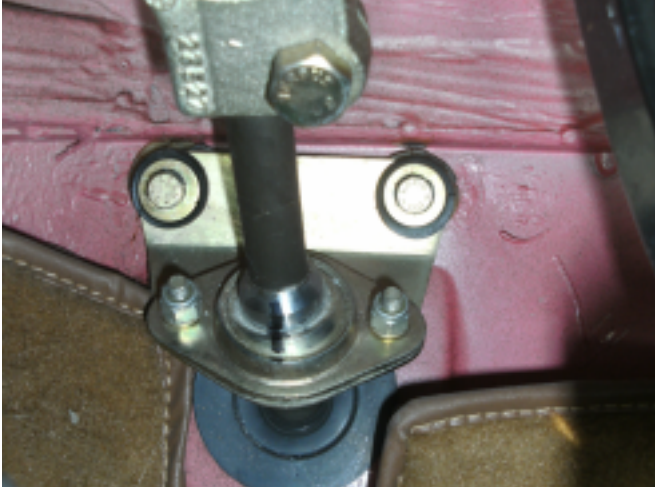
13-02-2015

Contents



1. EZ Powersteering, complete set
2. Electric motor
3. ECU
4. Wire harness
5. Input shaft
6. Output shaft
7. Brackets

1. Take the car for a testdrive and check the original steering system for faults. When all OK continue with the conversion.
2. Locate an ignition switched 12V plus wire and label this wire. Disconnect the battery earth afterwards.



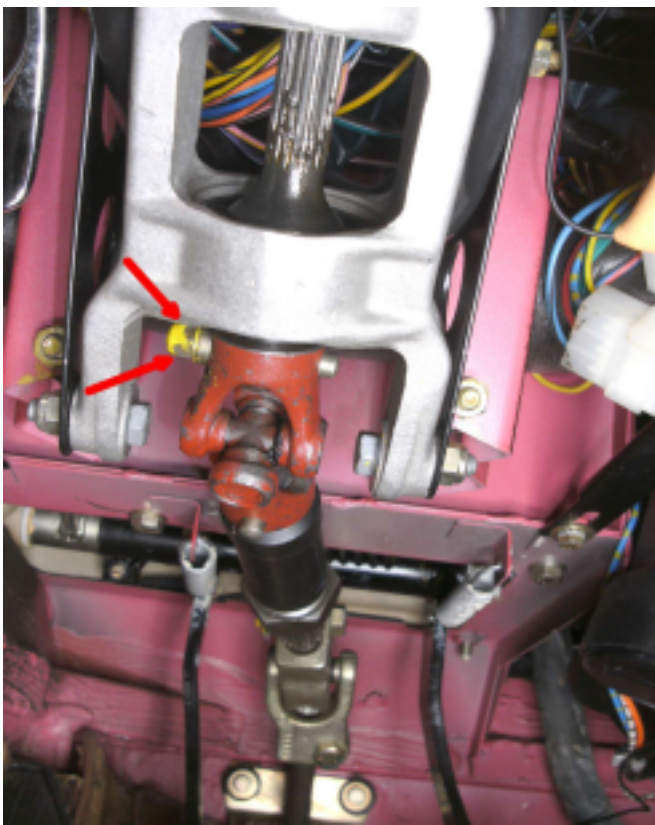
3. Align the steering system, to its center position and mark the steering shaft at the firewall.



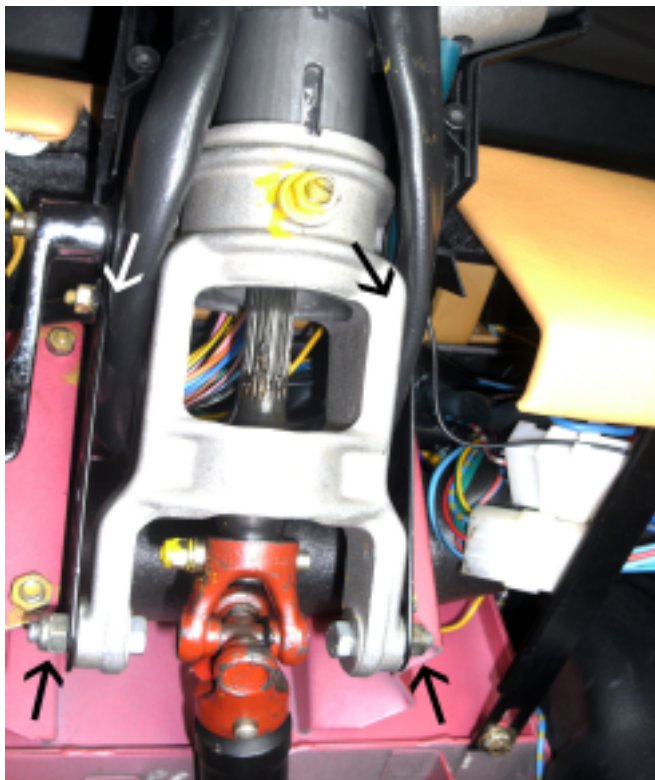
4. Remove steering wheel.



5. Remove the cover from the steering column



6. Remove the taperpin from the U-joint. Also disconnect the connectors from the steering column.



7. Remove the bolts/nuts from which hold the steering column brackets to the car. The complete column with brackets can now be removed from the car.



8. Remove the height adjustment pin from the original column and install it onto the EZ unit.



9a. Remove the steering column switch from the original steering column. The pins need to be removed from the connectors, otherwise the wiring cannot be guided through the column. Write down the position prior to removal!



9b. Connector removed.



10. Remove the ignition lock from the original steering column, use a chisel to remove this bolt. The ignition lock can be installed into the EZ unit afterwards.



11. Install the complete unit with brackets into the car. Do not forget to tighten the taperpen from the U-joint. Also connect the EZ harness with the ECU.

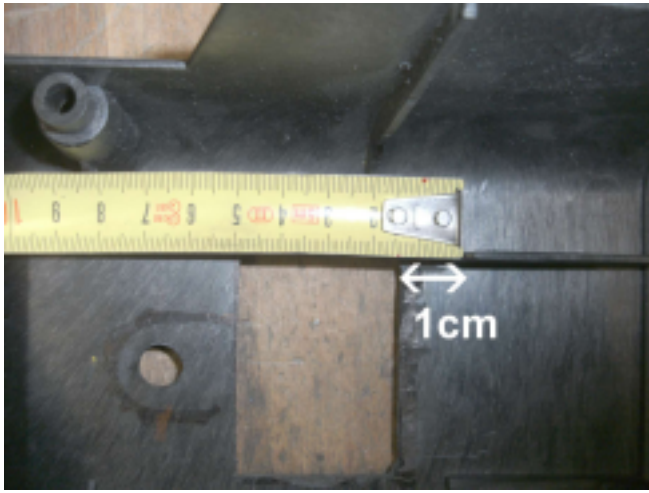
12. Guide the wiring from the switch through the EZ unit and install the steering column switch onto the EZ unit. Finally install the wiring into the connectors
13. Connect the thick red wire 30+ through the fuse holder directly with the battery plus.
14. Connect the thin red wire 15+ with an ignition switched feed (see point 2).
15. Connect the black wire 31- with a suitable earth point.



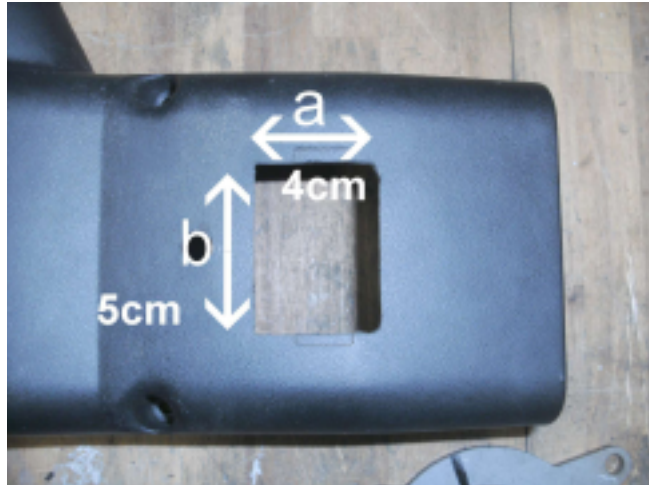
16. Remove the plastic cover from the speedometer, unscrew the screws and pull the speedometer out.



17. The EZ unit uses the electronic speed signal to control the EZ unit, connect the red/black wire from the EZ harness with the red/black wire at the back of the speedometer. Reinstall the speedometer after that has been done.



18a. In some situations it is needed to modify the cover, a recess needs to be made from 4x5cm. See photo as example.



18b. To cover up the recess use the supplied stainless cover and install it over there.





19. Reinstall the steering wheel, watch the horn connector during installation.



20. Check the steering wheel position and if needed adjust it. This can be done by resetting the U-joint on the splines from the steering shaft.

21. Reconnect the battery earth.

22. After the ignition has been switched on, there is an click noticeable from the ECU. The system is now operational, check this. The system turn off with a delayment, this is noticeable at the click, hearable after a couple of seconds after the ignition has been turned off.

23. Take the car for a testdrive and recheck all systems.

