

EZ POWERSTEERING



INSTALLATION MANUAL  
FERRARI 512 TR

13-01-2015

# Contents



EZ-FTR-1. EZ Powersteering, complete set + Output adapter.

EZ-FTR-2. EZ unit

EZ-FTR-3. Input shaft

EZ-FTR-4. Wire harness with controller.

EZ-FTR-5. ECU

1. Check tyre pressure and take the car for a testdrive. Check the original steering system for faults. When all OK, continue with the conversion.
2. Locate a ignition switched 12v plus wire and label it. This is needed to control the EZ unit. (see point 15). Disconnect battery earth. Align the steering system to its center position, mark the steering shaft at the firewall.
3. Remove the bolt from the upper U-joint in the steering column.
4. Remove the bolt from the steeringshaft at the fire wall.
5. Remove the steering shaft with the upper U-joint.



6. Install the EZ adapter at the original steering shaft in the car.



7. Check if the EZ adapter is pushed far enough onto the steering shaft. Install the bolt afterwards (do not tighten it yet).

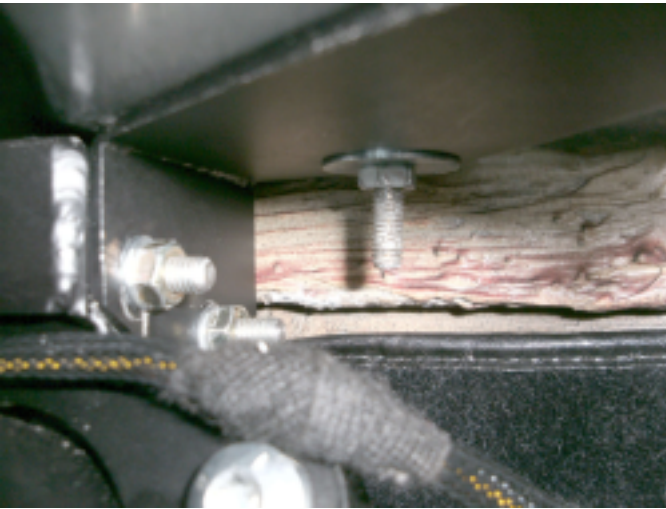


8. Install the two upper brackets on the original mounting points. Do not tighten them yet.





9. Install the EZ unit on the previous installed adapter. Do not tighten the bolt yet.



- 9a. Install the EZ unit in the upper brackets, use the supplied bolts, nuts and washers.



10. Install the EZ input shaft, if needed loosen the nut so that the shaft length can be adjusted, this makes the installation easier. Check the alignment from the red dots onto the shaft prior to installation.

Watch the steering wheel position during installation.

**11. NOW TIGHTEN ALL BOLTS&NUTS FROM THE ADAPTER, BRACKETS AND INPUTSHAFT. ONCE EVERYTHING IS TIGHTENED FINALLY TIGHTEN THE NUT ONTO THE INPUTSHAFT,**

12. Locate a suitable location for the ECU and install it, connect the EZ harness to the ECU.

13. Connect the red/black wire from the EZ harness with the red/black wire from the car. This is the speedsignal from the car, its fitted at the back of the speedmeter.

14. Connect the thick red wire (30+) through the fuseholder direct with the battery plus.
15. Connect the thin red wire with an ignition switched plus (se point 2).
16. Connect the black wire 31- with an suitable earth point.
17. Reconnect the battery earth.
18. After the ignition has been switched on, there is a click noticeable from the ECU, the system is now operational. Check this.
19. Check if the steering can turn freely
20. Check the function from the steering lock.
21. Take the car for a testdrive and check all systems. M

