

EZ ELECTRIC POWER STEERING

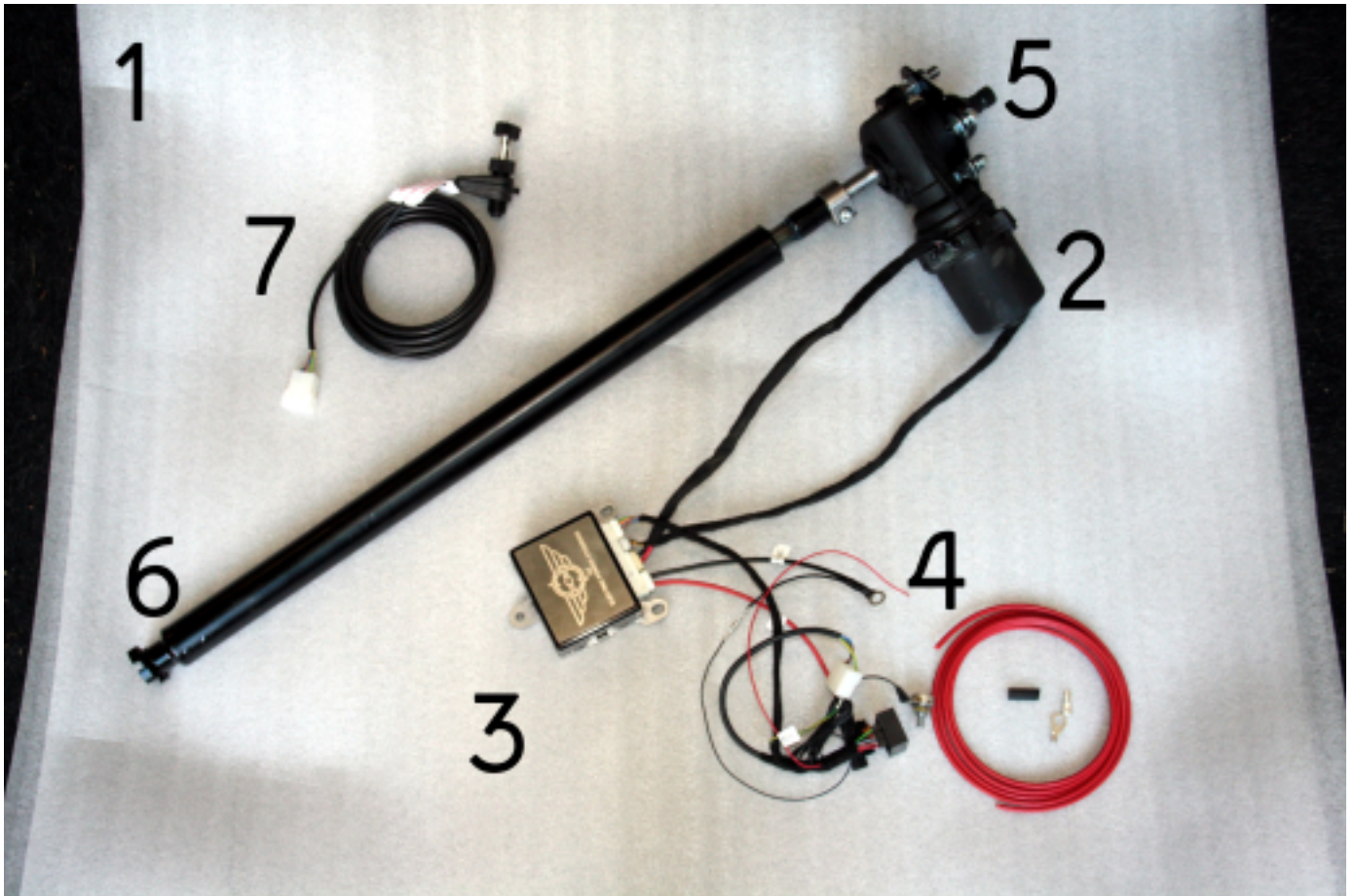


INSTALLATION MANUAL FERRARI DAYTONA 365 GTB/4, 365 GTS/4

Version 1.1

04-01-2012

CONTENTS



EZ-FDAYT-1. EZ Powersteering, complete set

EZ-FDAYT-2. Electric motor

EZ-FDAYT-3. Computer

EZ-FDAYT-4. Cable set with controller

EZ-FDAYT-5. Input shaft

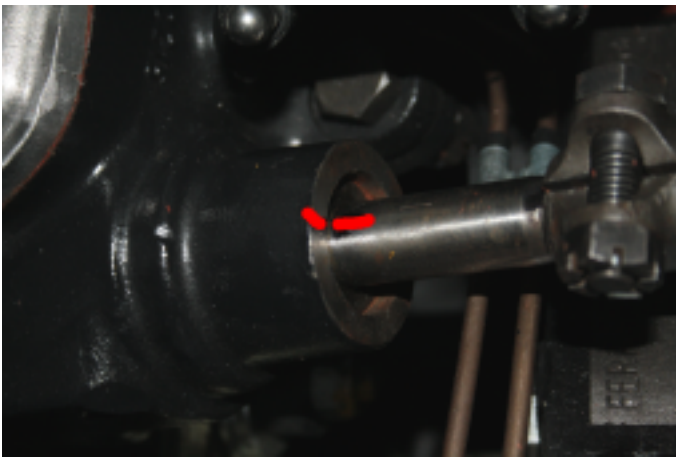
EZ-FDAYT-6. Output shaft

EZ-FDAYT-7. Adapter speedometer cable

1. Check the tyre pressures: front 34 psi/2.3 bar, rear 36 psi/2.5 bar. Take a test drive. Check if the steering wheel self-centres. Check the steering for any defects.



2. Remove the battery negative lead. Place the front wheels in a straight position.



3. Mark the straight ahead position on the steering box.



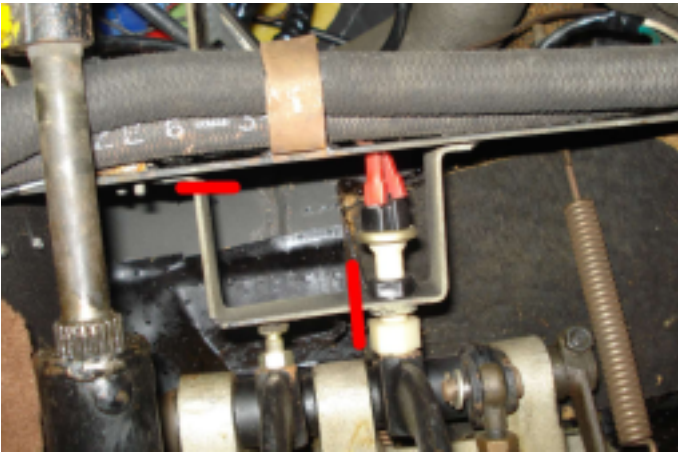
4. In the engine bay, release the steering shaft by cutting the securing wire and unscrewing 4 Allen bolts (4 mm). Use tape on the universal joint in the engine bay to prevent it from falling apart.



5. Unscrew the bolt in the universal joint under the dashboard. Remove the split pin. Remove the steering shaft. The rubber sleeve/grommet should be refitted in the bulkhead. Fit the EZ output shaft afterwards.



6. In the pedal box, material should be cut away for the EZ Powersteering electric motor. Use the template supplied with this manual.

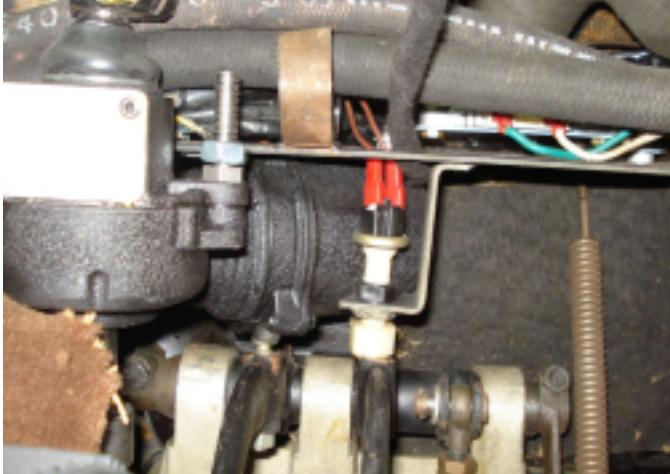


7. The Brake light switch bracket need to be modified. See photo, where to cut the bracket.





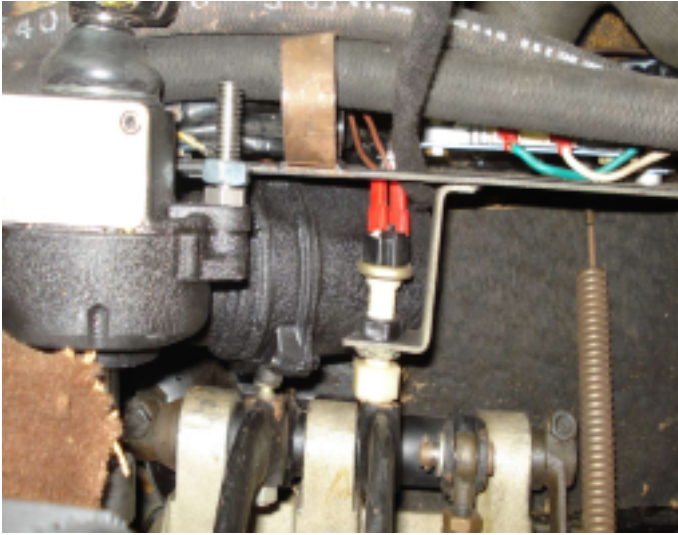
8. Once the bracket has been cut, the nut from the bolt on top of the clutch pedal needs to be removed and fitted underneath the clutch pedal. Be sure to reset the position from the bolt to remain the same height from the clutch pedal afterwards. This bolt touches the EZ unit once it is fitted.



9. Slacken the 2 bolts in the steering column height adjuster. It can now move freely, making the installation of the electric motor easier.



10. Loosen the clips which hold the aircon hoses. The hoses need to be rerouted slightly just above the unit. It would help if the aircon hoses are removed, there for the aircon system needs to be vacuumed prior installation of the EZ unit and refilled after the EZ unit is installed. We advise you doing this. It improves accessibility very much! But it's possible without.



11. Install the electric motor by moving it upwards over the brake light switch first.



12. Slide the electric motor input shaft in the steering wheel side universal joint. Fit the bolt in the universal joint without tightening it. The aircon hoses are just routed over the universal joint (be sure they do not touch the U-joint), also fit the mounting bracket loosely into place. If not possible to fit both aircon hoses over the EZ unit, Then run the thickest hose underneath the EZ Unit.



13. Check the straight ahead position on the steering box and the steering wheel. Once OK, slide the output shaft over the electric motor's splines.



14. Check if the EZ unit turns freely and if there is enough clearance between the EZ unit and pedal box. If all OK, fit the nuts from the mounting bracket and adjust it into the correct position. Use a marker to mark the holes on the metal that is behind the mounting bracket, and drill these holes with a 9 mm drill. (if not removed, temporarily route the aircon hoses underneath the EZ Unit for accessibility.)



15. Fit 2 bolts (M8) from behind in the mounting bracket holes. Fit nuts with washers on the bolts' threads.



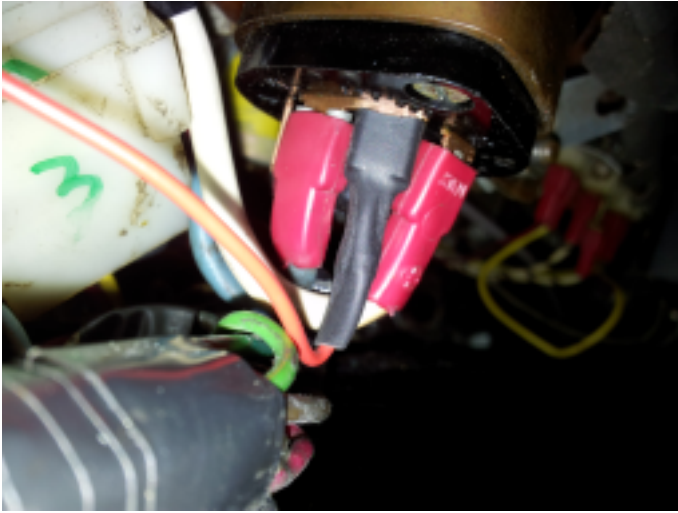
16. Tighten the bolts in the universal joint and in the steering wheel height adjuster. Use a new wire to secure the bolts on the universal joint at the steering box. Fit a new split pin on the bolt in the universal joint under the dashboard. Secure the aircon hoses with tie wraps to secure them so they cannot touch the u-joint.



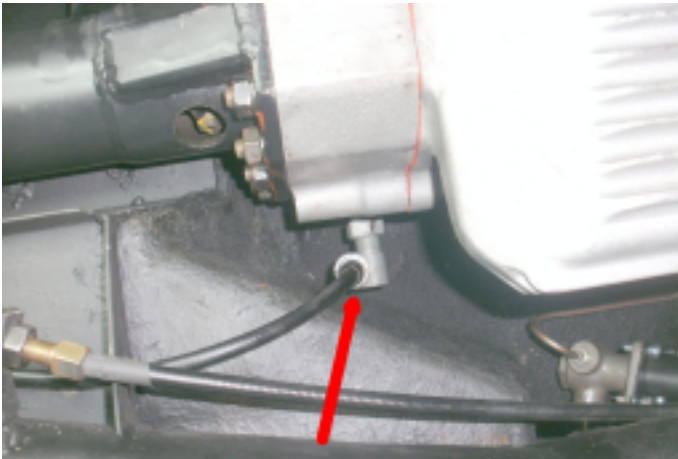
17. Mount the computer with its mounting bracket on the front of the pedal box.

18. Connect the positive lead (30+) with inline fuse to the battery positive lead.

19. Connect the negative lead (31-) to the upper steering column bolt. Reconnect the battery negative lead.



20. Connect the ignition switched positive lead (15+) to the ignition switch 15+. Check if this connection is switched on by the ignition first.



21. The speedometer signal is taken from a cable that runs from the transmission. Mount the adapter between the transmission and the speedometer cable. Use tie-wraps to run the lead along with the existing ones back to the car, and connect the lead to the EZ Powersteering computer.

22. Fit a connector (supplied) to the speedometer signal lead. Use the EZ Powersteering cables to fit the leads correctly.

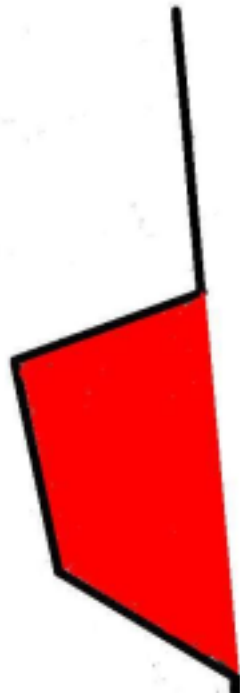
green-yellow = signal
brown = positive
blue = negative

23. Switch on the ignition. The computer should produce one click; the power steering should now work. Check the car's tyre pressure.

24. Take a test drive. Check if the steering wheel self-centres. Check the steering for any defects. Also check if the power assist decreases as the vehicle speed rises.



RH side pedalbox



Front pedalbox
(if necessary)

