

Moulded Floor Mat
Installation Guide
For '79 to '82 Toyota Land Cruiser FJ40

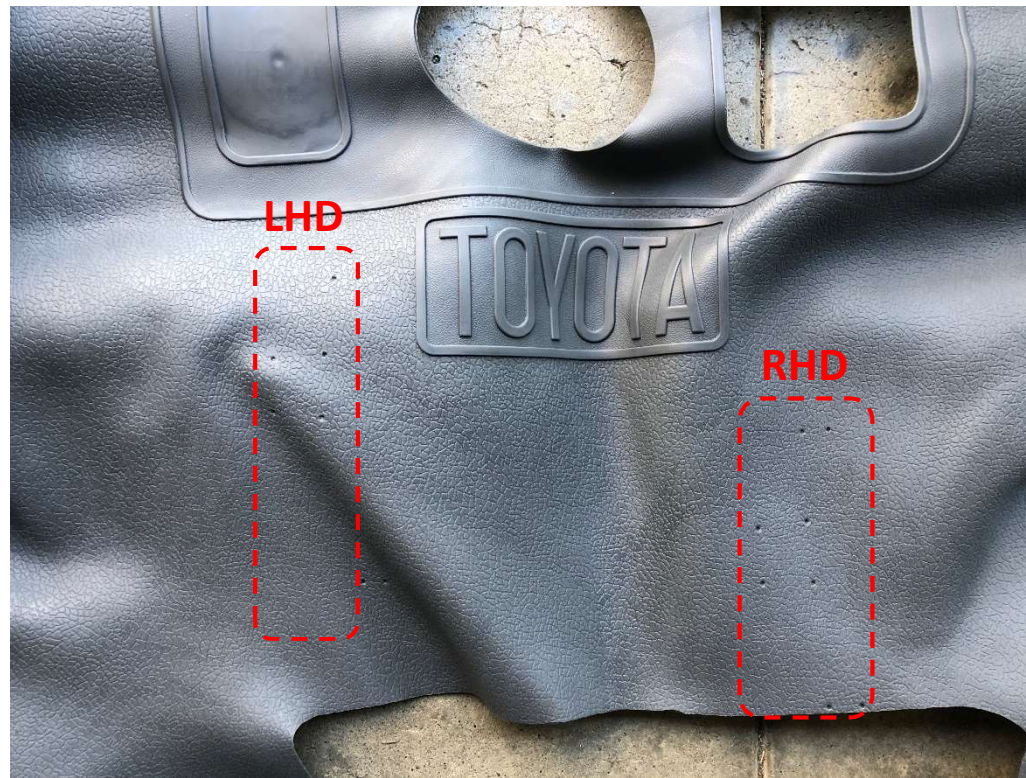
City Racer LLC

Task 1

Upon removing the floor mat from the box, we recommend that you first place it under the sun or inside a hot car for a couple of hours. The heat will loosen up the mat. Any fold lines and wrinkles will disappear.

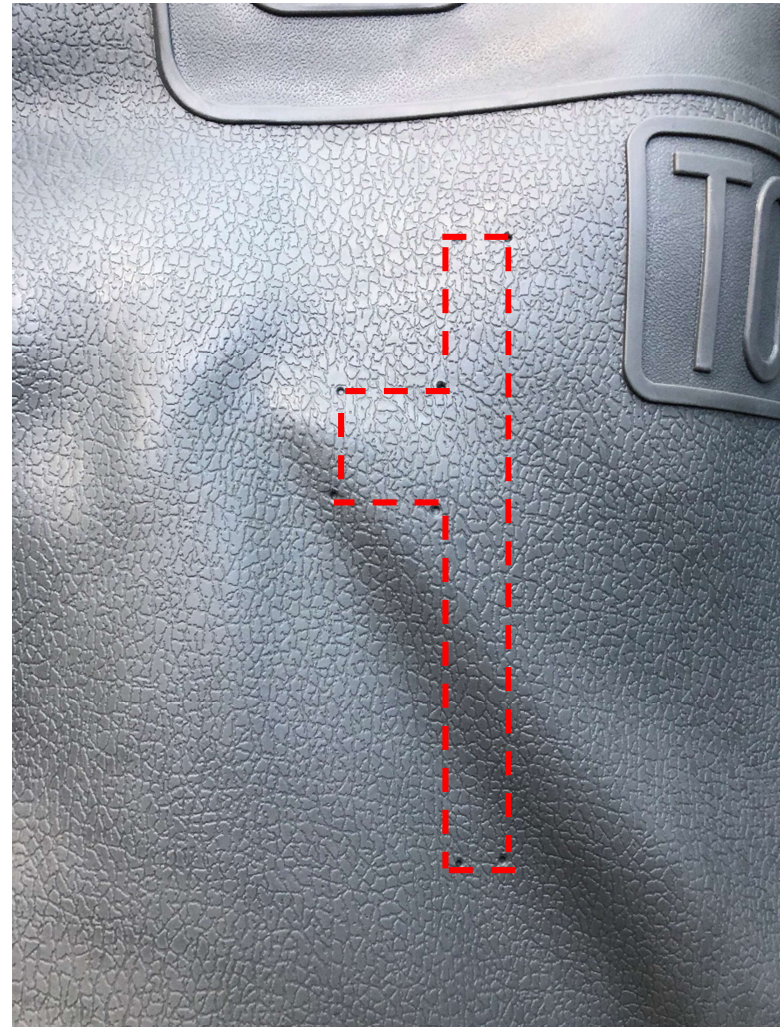
Task 2 – Cut Hole for Parking Brake Lever

A cutout needs to be made for the parking brake lever. The location depends on whether the vehicle is LHD or RHD. Dots on the floor mat serve as a guide for where to make the cut.

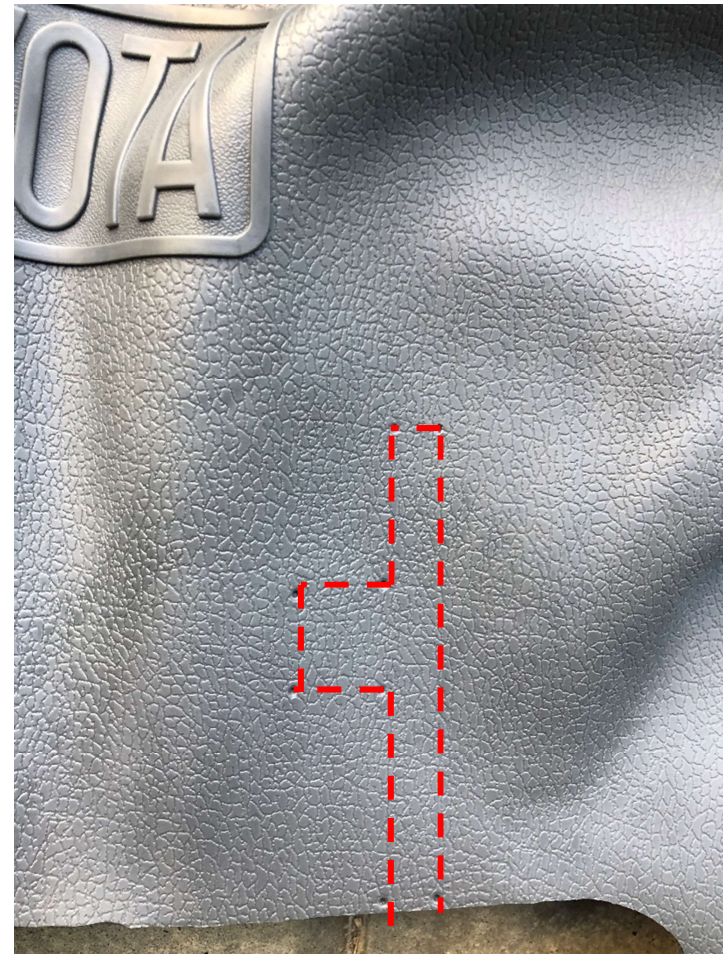


City Racer LLC

Close-up on LHD Parking Brake Lever Cutout

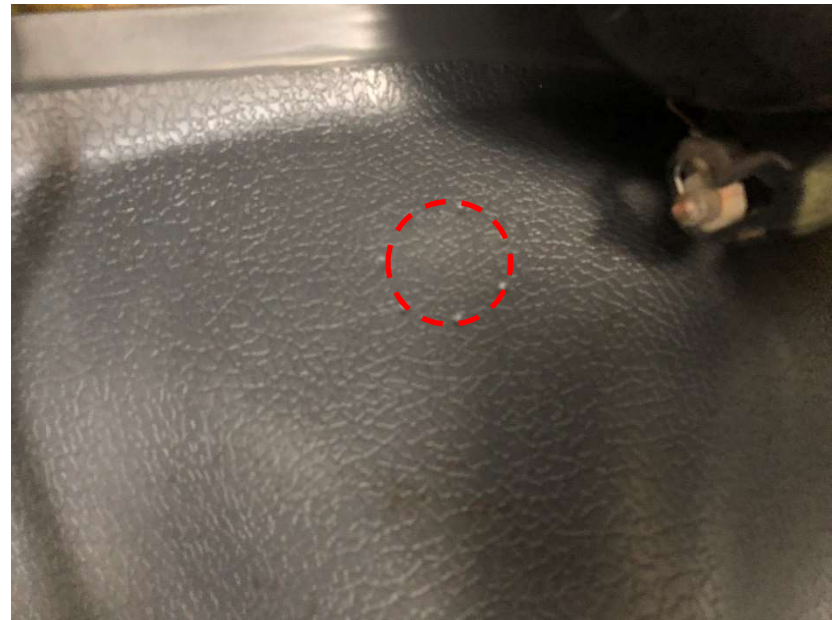


Close-up on RHD Parking Brake Lever Cutout



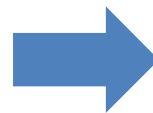
Cutout for Drain Tubes

Non-US cars with drain tubes will require additional cutouts for the drain tubes to drop through the hump.



'83 – '84 Cars: Enlarge Transmission Shifter Hole

Due to larger shifter boot on '83-'84 cars, the upper part of the transmission shifter hole needs to be enlarged. Cut carefully with scissors.



Task 3 – Fit the Mat

Fit the mat into the car. Alternately work the mat from both sides.



City Racer LLC

Task 3 – Fit the Mat

Fit the mat into the car. Alternately work the mat from both sides.



City Racer LLC

Optional: Create Cutout for Rear Heater Lines

The mat will likely “hover” around the rear right side of the hump due to the ramp-up of the heater lines running underneath. The OEM mat is hand cut in this area to clear the lines, allowing the mat to drop to the floor and spread out further. We leave it up to the customers whether to create this cutout.



Optional: Create Cutout for Rear Heater Lines

If you decide to replicate the cutout of the OEM mat, we suggest you first fit the new mat into the car; overlay the old mat on top of this area and trace the outline, then cut with scissors.

