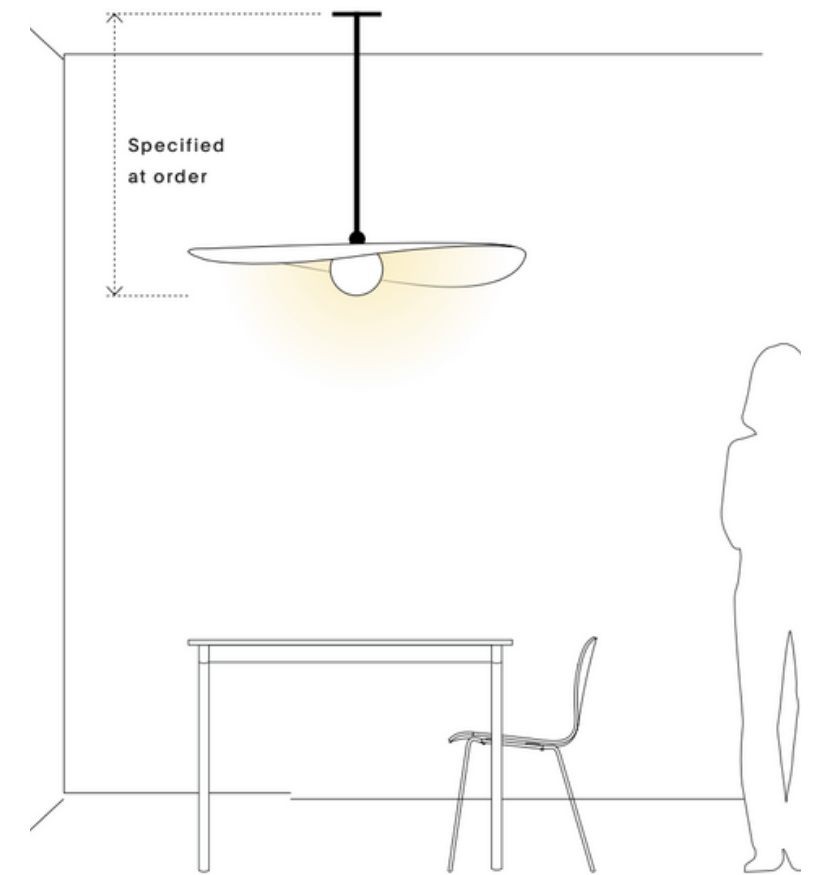
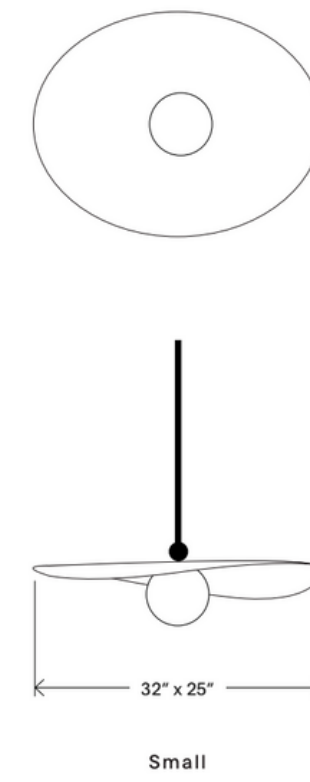
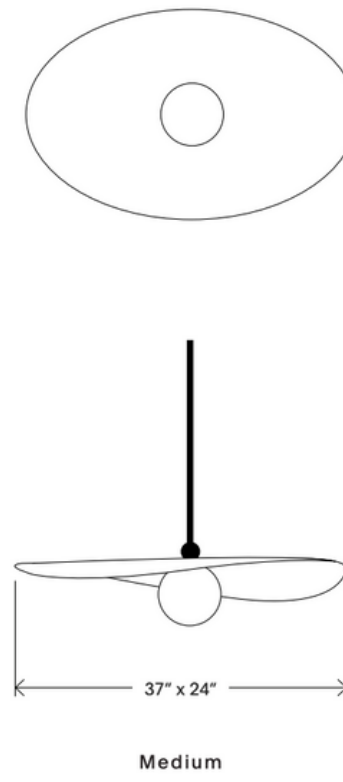
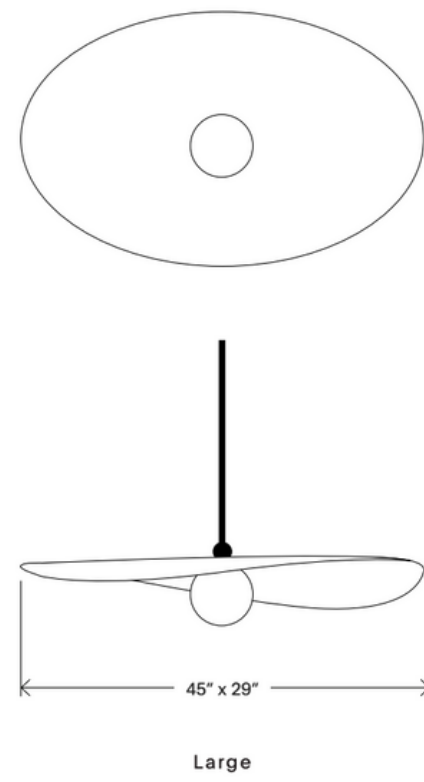
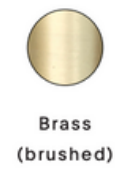


MØDERN RELIK



HARDWARE



Brass (brushed)



Blackened Brass

SHADE



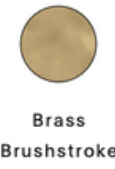
Perforated Smoke



Perforated Fog



Stainless Steel Brushstroke



Brass Brushstroke



Marbled White Glass



Glacier Glass



Marbled Amber Glass

GLOBE



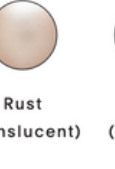
White (opaque)



Cream (translucent)



Fog (opaque)



Rust (translucent)



Cream (opaque)

Perle P

PERLE P, embraces the naturally sinuous qualities of sheet materials, expressing simple, sculptural gestures that add warmth and dimension to interior volumes.

Available in small and medium sizes with glass shade.

Available in small, medium, and large sizes with metal shade.

As Shown

\$6,800

Lead Time

This product is made to order in the USA.

Please allow 18-24 weeks to ship.

United States Ground Shipping for \$130.

Detail

- Shade Options - Perforated Smoke, Perforated Fog, Stainless Steel Brushstroke, Brass Brushstroke, Marbled White Glass, Glacier Glass, Marbled Amber Glass
- Hardware Finishes - Blackened Brass, Brass
- Globe Finishes - Color washed acid etched glass globe, in Fog (opaque), Cream (translucent), Cream (opaque), White (opaque), or Rust (translucent).
- Lamping - E26 socket with G16.5 bulb recommended,
- Materials: Glass, Brass, Stainless Steel, Aluminum
- Customize: Finishes, Dimensions, Clusters
- Socket / Lamp: E26 socket, G16.5 bulb recommended
- Watt / Bolt 25W max line voltage to 300v
- Compatibility: Most North American and European. Certification UL on request.

Note

- This product is made to order and specifically sized to your specifications. Upon order, we will reach out to confirm specifics.
- Bulb not included
- 2700K Color Temp
- ELV Dimming - Electronic wall dimmer required.

Dimensions

- Large: 45 x 29"W
- Medium: 37 x 24"W
- Small: 32 x 25"W

Give our design team a call/email for help with your custom configuration.
 485 Harrison Ave, Boston MA, 02118 | modernrelik.com | concierge@modernrelik.com | 617-513-3336 | @modernrelik