



401 South Grand Ave., Santa Ana, CA 92705
Tel: 714.550.6070 Fax: 714.550.9661 www.twobros.com

Dealer
DISPLAY

TBR Dealer Display

Part# 015-CFD
3 Pipe Black Cardboard Floor Display



Dealer
DISPLAY

Installation Instructions

1. Open box, remove contents and confirm that all parts are there and identified.



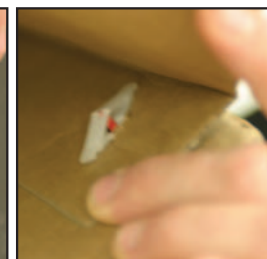
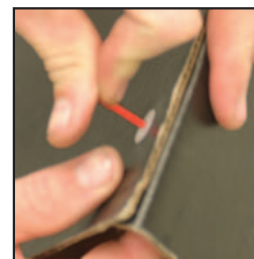
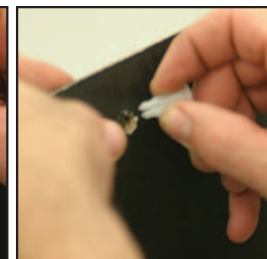
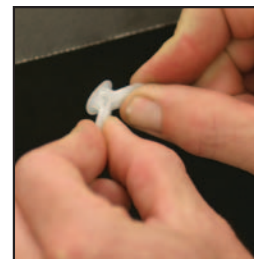
2. Build base structure.



3. Build main structure by pushing inward at pipe box cut outs as you set in triangular formation.



4. Lock-in place with the 5 push pins provided on the back.



Push pins - Fold outer tabs inward to make flat. Insert one push-pin into each hole on the back of the main structure and through folded tab. Use "RED" pin and insert into the center of each push-pin hole to snap the outer tabs back out. This will lock in position. Repeat for all 5.



401 South Grand Ave., Santa Ana, CA 92705
Tel: 714.550.6070 Fax: 714.550.9661 www.twobros.com



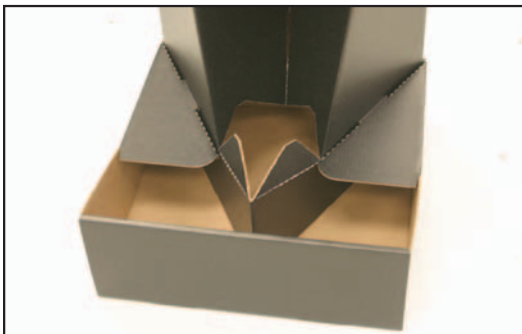
TBR Dealer Display

Part# 015-CFD
3 Pipe Black Cardboard Floor Display

5. Inset main structure into base and lock bottom tabs through holes.



6. Stand display upright. Fold and insert base tabs into sides of main structure.



7. Fold top and insert Two Brothers Racing top sign.



8. Fold shelves down and insert pipe display boxes into shelves.

