



2010 Yamaha YZ450F

Installation Instructions



JUICEBOX PRO[®]
Premium Fuel Controller

PARTS LIST

- 1 Juice Box Pro™
- 1 USB Cable
- 1 TopTune CD-ROM
- 1 Installation Guide
- 2 Velcro strip
- 1 Alcohol swab
- 1 Zip ties

THE IGNITION MUST BE TURNED OFF BEFORE INSTALLATION!

DOWNLOAD THE TOPTUNE SOFTWARE AND LATEST MAPS FROM OUR WEBSITE:

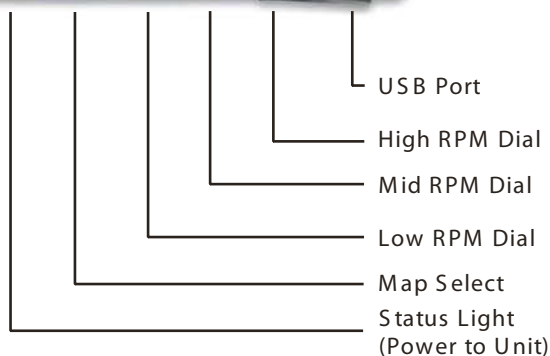
www.twobros.com

PLEASE READ ALL DIRECTIONS BEFORE STARTING INSTALLATION

401 S. Grand Ave. Santa Ana, CA 92705
(800) 211-2767 www.twobros.com

JUICEBOX PRO[®]

Premium Fuel Controller



Selecting the Map Position

The Juice Box Pro comes loaded with up to ten maps. Using a #1 Phillips screwdriver, turn the map select dial to toggle between the loaded maps. Refer to the map position table below for the maps included in your Juice Box Pro.

Using the RPM Range Dials

The Low, Mid, and High RPM Dials refer to the RPM range, in thirds, of your vehicle. Each dial allows +/- 10% fuel adjustment on top of what fuel changes are done in the map. With the dial facing straight up, there is no additional fuel change. For example, if your vehicle revs to 15,000 RPM:

- the low RPM dial will adjust 0-5000 RPM
- the mid RPM dial will adjust 5001-10000 RPM
- the high RPM dial will adjust 10001-15000 RPM

Using TopTune

Take your tuning to the next level with the TopTune software.

Installing the TopTune Software

- 1 Insert the CD provided into your computer's cd-rom drive. The launch program will run automatically. If auto-run is disabled, double-click the My Computer icon then double-click the CD drive icon. Double-click TBR TopTune.exe to manually start the CD.
- 2 Click Install Software and follow the on-screen instructions to install the Top Tune software. The TopTune software and maps will be stored in C:\Program Files\TBR TopTune.
- 3 Click Map Database. All maps will automatically be installed to the C:\Program Files\TBR TopTune\maps folder.

Loading Additional Maps

- 1 Connect the USB cable from the computer to the Juice Box Pro. Verify the cable is fully seated in the Juice Box Pro.
- 2 Run the TopTune software by double-clicking the program icon installed on your desktop or on your start menu.
- 3 Click Open Map File and select a map file.
- 4 Click Send Map. You can send the map to any of the ten map positions.

Altering Maps Using TopTune

The values in the map represent a percentage of fuel change over stock. A value of 10 in the map indicates at that throttle position and RPM range the vehicle will be 10% richer than stock. If the value is -10, then it would be 10% leaner than stock. You have the ability to fine tune your fuel curve by altering these values. The TopTune software allows a value of +250 to -100 in each cell.

Position 0	Zero map	
Position 1	Stock exhaust Stock air filter	2010 Yamaha YZ450F

Figure A



Figure B

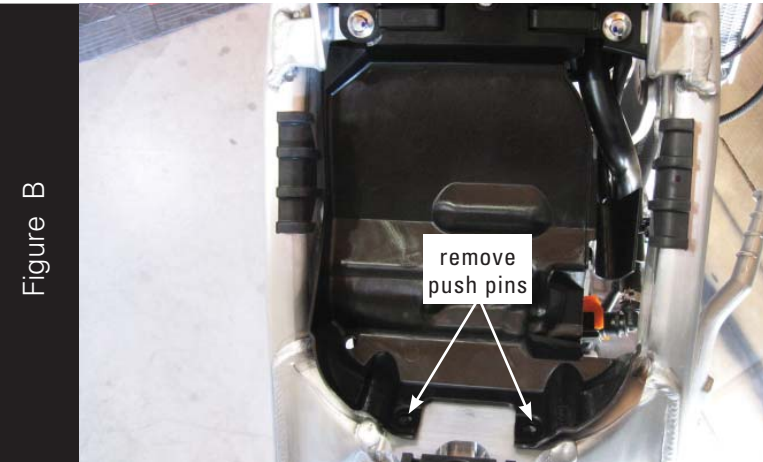


Figure C



1. Remove the seat.
2. Remove the airbox and radiator covers on the right hand side as shown in Figure A.
3. Remove the fuel tank.
4. Remove the two push pins securing the tray underneath the fuel tank as shown in Figure B.
5. Remove the tray.
6. Unplug the stock wiring harness from the fuel injector as shown in Figure C.

Figure D

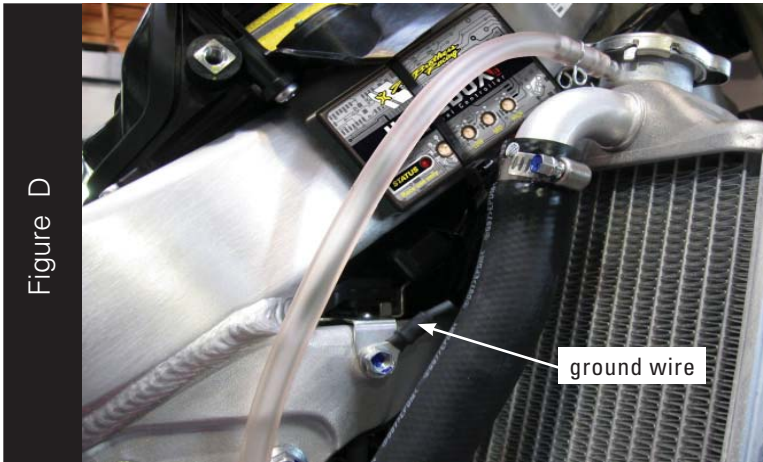


Figure E

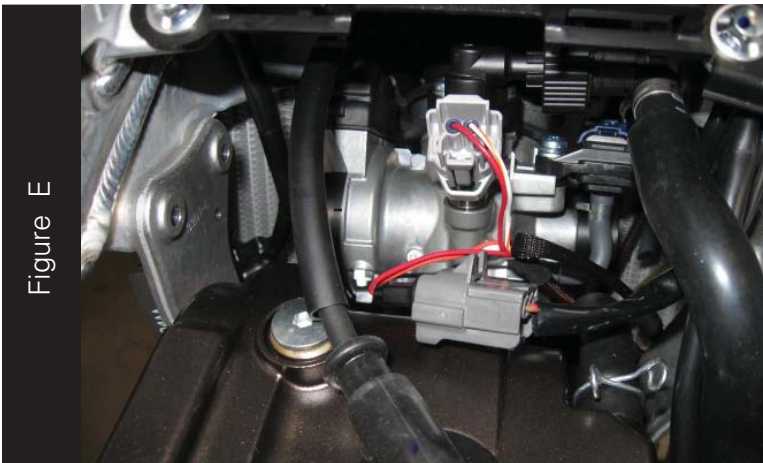
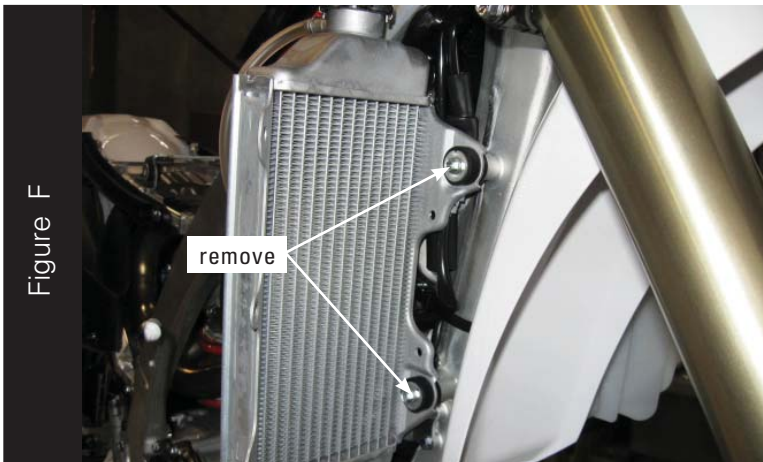


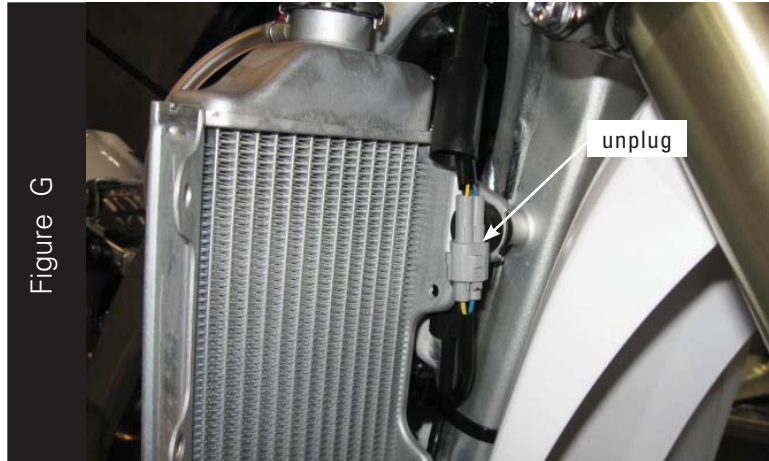
Figure F



7. Using the supplied velcro and/or zip tie, secure the Juice Box Pro to the right hand side of the frame as shown in Figure D.
Make sure to clean both surfaces with the alcohol swab before attaching.
8. Attach the ground wire from the Juice Box Pro to the bolt shown in Figure D.
9. Route the Juice Box Pro harness to the inside of the frame and go towards the injector.

10. Attach the Juice Box Pro harness to the fuel injector and stock wiring harness as shown in Figure E.

11. Remove the two radiator mounting bolts on the right hand side of the bike as shown in Figure F.
This allows access to the wiring harness behind the radiator.



12. Locate the grey 3-pin connector and unplug it as shown in Figure G.



13. Attach the connectors from the Juice Box Pro to the stock wiring harness for the Throttle Position Sensor as shown in Figure H.
14. Reinstall the fuel tank tray.
15. Reinstall the fuel tank.
16. Reinstall the air box and radiator covers.
17. Reinstall the seat.