



401 South Grand Ave., Santa Ana, CA 92705
Tel: 714.550.6070 Fax: 714.550.9661 www.twobros.com



2008 Suzuki B-King

V.A.L.E.™ Slip-on Exhaust System with Dual M-2 Canisters
Part # 005-1950406DM / 005-1950407DM / 005-1950408DM



Parts List

Qty.	Description	Part Number
1	Muffler Canister (Left Side)	Varies
1	Muffler Canister (Right Side)	Varies
1	Slip tube	005-19504V
2	Muffler Canister Clamps	005-2C-113
1	HARDWARE KIT	005-195-3
4	X-Ring (half)	005-7-2-3
1	Fender Eliminator	005-19504B
2	Turn Signal Brackets	005-195-21
1	B-King Lights Kit	005-195042K
2	6" Parallel Wires	005-PW218
8	Butt Splice 16-14 AWG (Blue)	005-BS1614
1	Barrel Clamp	005-27-63MSH
4	Zip Ties	005-ZT458B
4	Zip Tie Tabs	005-ZTM4
2	6x16mm Flange Bolt	005-FB616
2	6mm Flange Nut	005-FN6
8	6x14mm Socket Head Cap Screw	005-SH614
1	5mm Long Handle Ball End Hex Wrench	005-9-18610
8	6mm Split Lock Washer	005-WL6
2	10mm Flat Washer	005-WF10

IMPORTANT - PLEASE READ CAREFULLY

We recommend that this performance part be installed by a qualified motorcycle technician. If you have any doubts as to your ability to install this performance part, please consult with your local motorcycle dealer. Read all instructions first before starting installation. Make sure the motorcycle and exhaust system are completely cool before starting the installation. Also, make sure the bike is secure on a centerstand or ideally a service lift during installation. Be sure to save all stock components for possible use later.

Installation Instructions

1. Make sure the bike is completely cool before starting the installation. Make sure the bike is secure on a centerstand or ideally a service lift.



2. Remove seat and tail cover.



3. Remove rear cowling.



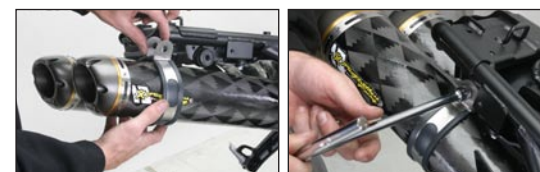
4. Remove OEM muffler assembly and fender section.



5. Attach TBR muffler to slip-tube using the 8 V.A.L.E.™ 6x14mm S.H.C.S. and lock washers provided. Leave loose for now.



6. Attach the TBR muffler assembly to the headpipe using the barrel clamp provided. Slide the rubber lined muffler clamps over the muffler and muffler assembly to motorcycle. Make sure the barrel clamp is at the slip tube joint with the head pipe. Use the OEM muffler mounting bolts to attach muffler clamps to frame.



7. Align the mufflers and tighten the 8 V.A.L.E.™ 6x14mm S.H.C.S. and barrel clamp. Make sure the muffler clamps are tight and check the clearance between all plastic parts.



8. Attach the fender eliminator to the rear frame with OEM bolts. Double check the clearance between the mufflers and plastic parts once more and adjust as needed.



Continued on pg. 2



401 South Grand Ave., Santa Ana, CA 92705
Tel: 714.550.6070 Fax: 714.550.9661 www.twobros.com

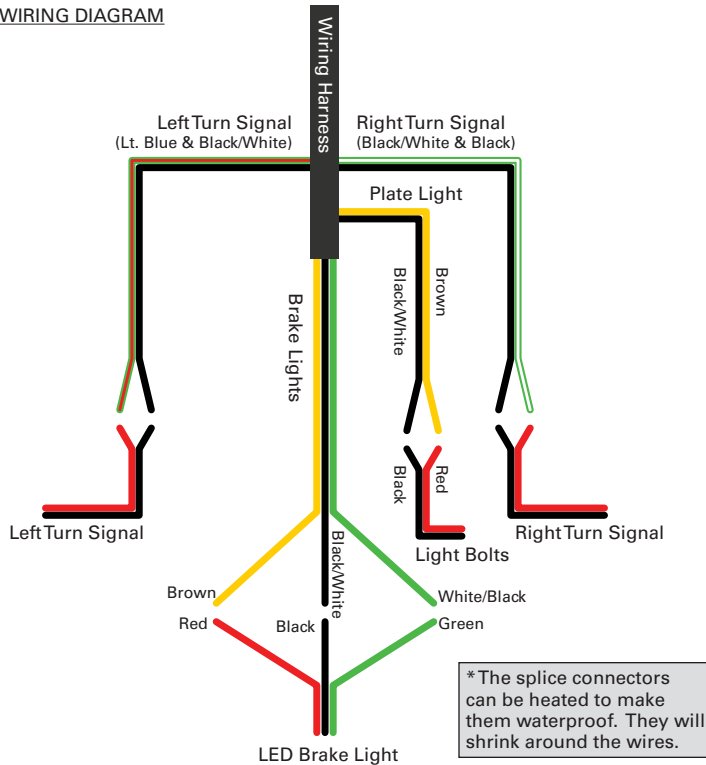


2008 Suzuki B-King

V.A.L.E.™ Slip-on Exhaust System with Dual M-2 Canisters
Part # 005-1950406DM / 005-1950407DM / 005-1950408DM



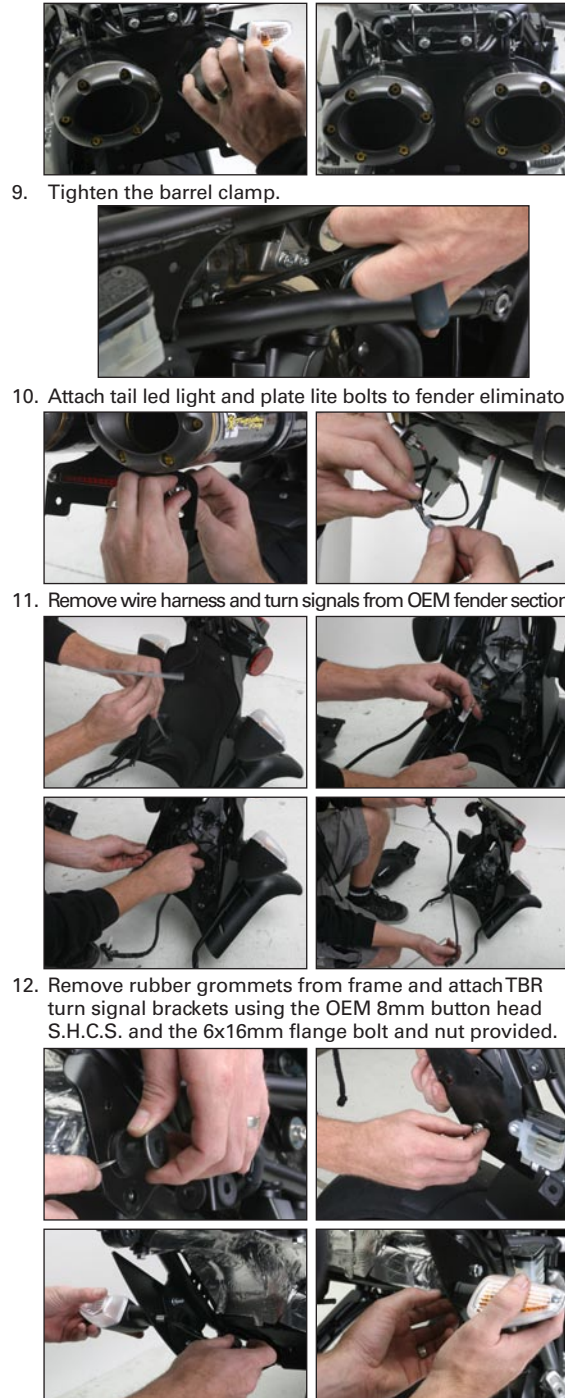
WIRING DIAGRAM



Warranty

Two Brothers Racing products are intended for closed course competition purposes only, and therefore are sold "as is" without warranty. Two Brothers Racing specifically disclaims any warranties of merchantability or fitness for a particular purpose and disclaims all responsibility for consequential and incidental damages or any other losses arising from the use of these products or parts.

Installation Instructions



13. Add parallel wire to both L & R turn signals and attach to new turn signal brackets. A 10mm washer is provided to use as a spacer for the turn signals in front of the OEM nut. Zip tie wires away from exhaust tube.



14. Plug wires into main wire harness and attach to motorcycle.



15. Attach tail and plate light bolts as shown in Wiring Diagram. You will need to cut the OEM plugs and attach with the supplied connectors.



16. Check all lights to be sure they function correctly including your brake lights.

17. Re-install the rear cowling and seat.



18. Double check all your work.



19. Before you run the bike, clean off all fingerprints and dirt, as any oily residue will etch the metal and become somewhat permanent when the system gets hot. Also, remove any plastic film from the name badge(s) and or canister clamp(s). Run the bike and enjoy. It is normal for some white smoke to appear the first time you start the bike. This is packing/manufacturing oil from inside the pipe burning off. Check for gaps or leaks. If you find a leak, a little high temperature silicon sealant should fix it. After 50 to 100 miles, recheck all fasteners for tightness.



401 South Grand Ave., Santa Ana, CA 92705
Tel: 714.550.6070 Fax: 714.550.9661 www.twobros.com



2008 Suzuki B-King

V.A.L.E.™ Slip-on Exhaust System with Dual M-2 Canisters
Part # 005-1950406DM / 005-1950407DM / 005-1950408DM



Care & Cleaning

Care & Cleaning

Keep system free of dirt and moisture. Store in a cool, dry place. Make sure vehicle is completely cool before maintenance.

Stainless Header System: Polished stainless steel pipes will turn a light golden hue after a few heat cycles, this is a normal characteristic of high quality stainless steel. Clean using a mild water based spray cleaner. Always apply cleaner or polish with a soft, clean cloth.

Titanium Header System: Polished titanium pipes will experience color shift ranging from deep blue/purple through amber after a few heat cycles. This is a normal characteristic of high quality titanium. Clean using a mild water based spray cleaner. Always apply cleaner or polish with a soft, clean cloth.

Polished Aluminum Canisters: Use an aluminum or mag wheel polish to restore the bright finish to factory spec.

Brushed Aluminum Canisters: Clean using a mild water based spray cleaner. Always apply cleaner or polish with a soft, clean cloth.

Carbon Fiber Canisters: Clean using a mild water based spray cleaner. Always apply cleaner or polish with a soft, clean cloth. Always make sure the fiberglass packing inside is in good condition and not burned out, as exhaust heat inside an empty canister will deteriorate the carbon fiber sleeve. TBR sells repack kits (Road - #005-10038, Offroad - #005-10038MX) that include everything you need to easily do it yourself.

Titanium Mufflers: For cleaning use a mild water based spray cleaner. Always apply cleaner or polish with a soft, clean cloth. Always make sure the fiberglass packing inside is in good condition and not burned out, as exhaust heat inside an empty canister will deteriorate the carbon fiber sleeve. TBR sells repack kits (Road - #005-10038, Offroad - #005-10038MX) that include everything you need to easily do it yourself.

Repack all road canisters at the first signs of packing material deterioration, Part #005-10038 Repack all offroad canisters after every 10 hours of use. Part #005-10038MX

NEVER dyno test your bike with carbon fiber or titanium canisters installed - the intense heat and lack of cooling air can quickly burn through the canister material. Two Brothers Racing does not provide a warranty for burned canisters.

005-1950406DM



Qty.	Description	Part Number
1	Muffler Canister (Left Side)	005-195-206ML
1	Muffler Canister (Right Side)	005-195-206MR
1	Slip tube	005-19504V
2	Muffler Canister Clamps	005-2C-113
1	HARDWARE KIT	005-195-3
4	X-Ring (half)	005-7-2-3
1	Fender Eliminator	005-19504B
2	Turn Signal Brackets	005-195-21
1	B-King Lights Kit	005-195042K
2	6" Parallel Wires	005-PW218
8	Butt Splice 16-14 AWG (Blue)	005-BS1614
1	Barrel Clamp	005-27-63MSH
4	Zip Ties	005-ZT458B
4	Zip Tie Tabs	005-ZTM4
2	6x16mm Flange Bolt	005-FB616
2	6mm Flange Nut	005-FN6
8	6x14mm Socket Head Cap Screw	005-SH614
1	5mm Long Handle Ball End Hex Wrench	005-9-18610
8	6mm Split Lock Washer	005-WL6
2	10mm Flat Washer	005-WF10

005-1950407DM



Qty.	Description	Part Number
1	Muffler Canister (Left Side)	005-195-207ML
1	Muffler Canister (Right Side)	005-195-207MR
1	Slip tube	005-19504V
2	Muffler Canister Clamps	005-2C-113
1	HARDWARE KIT	005-195-3
4	X-Ring (half)	005-7-2-3
1	Fender Eliminator	005-19504B
2	Turn Signal Brackets	005-195-21
1	B-King Lights Kit	005-195042K
2	6" Parallel Wires	005-PW218
8	Butt Splice 16-14 AWG (Blue)	005-BS1614
1	Barrel Clamp	005-27-63MSH
4	Zip Ties	005-ZT458B
4	Zip Tie Tabs	005-ZTM4
2	6x16mm Flange Bolt	005-FB616
2	6mm Flange Nut	005-FN6
8	6x14mm Socket Head Cap Screw	005-SH614
1	5mm Long Handle Ball End Hex Wrench	005-9-18610
8	6mm Split Lock Washer	005-WL6
2	10mm Flat Washer	005-WF10

005-1950408DM



Qty.	Description	Part Number
1	Muffler Canister (Left Side)	005-195-207ML
1	Muffler Canister (Right Side)	005-195-207MR
1	Slip tube	005-19504V
2	Muffler Canister Clamps	005-2C-113
1	HARDWARE KIT	005-195-3
4	X-Ring (half)	005-7-2-3
1	Fender Eliminator	005-19504B
2	Turn Signal Brackets	005-195-21
1	B-King Lights Kit	005-195042K
2	6" Parallel Wires	005-PW218
8	Butt Splice 16-14 AWG (Blue)	005-BS1614
1	Barrel Clamp	005-27-63MSH
4	Zip Ties	005-ZT458B
4	Zip Tie Tabs	005-ZTM4
2	6x16mm Flange Bolt	005-FB616
2	6mm Flange Nut	005-FN6
8	6x14mm Socket Head Cap Screw	005-SH614
1	5mm Long Handle Ball End Hex Wrench	005-9-18610
8	6mm Split Lock Washer	005-WL6
2	10mm Flat Washer	005-WF10