



401 South Grand Ave., Santa Ana, CA 92705
Tel: 714.550.6070 Fax: 714.550.9661 www.twobros.com



Two Brothers Racing

Juice Box™ - Fuel Controller

2007-08 Yamaha Grizzly 700 Installation & Operation Manual
Part # 008-179



Parts Included

Qty.	Description	Part Number
1	Juice Box™ Fuel Control Kit	008-179
3	Zip Ties	
1	Adhesive Velcro Square	

Tools Needed For Install

- Small Screwdriver
- 10mm Wrench
- 4mm Allen Wrench

IMPORTANT - PLEASE READ CAREFULLY

We recommend that this performance part be installed by a qualified ATV technician. If you have any doubts as to your ability to install this performance part, please consult with your local ATV dealer. Read all instructions first before starting installation. Make sure the vehicle and exhaust system are completely cool before starting the installation. Also, make sure the vehicle is secure during installation. Be sure to save all stock components for possible use later.

The Juice Box™ is legal ONLY for closed course race vehicles. The Juice Box™ is not applicable, nor intended for use on EMISSIONS CONTROLLED street, highway or off-road vehicles. The Juice Box™ is not applicable, nor intended for use on aircraft.

Warranty

Two Brothers Racing warrants that this product carries a warranty for 2 years from date of purchase against original defects in materials and workmanship. Should this product fail to perform for either of the above reasons, Two Brothers Racing will repair or replace it with an equivalent product at no charge, except for postage, to the original retail purchaser.

To obtain the benefits of this warranty, the retail purchaser must return the product and proof of purchase to the place of original purchase.

Installation Instructions

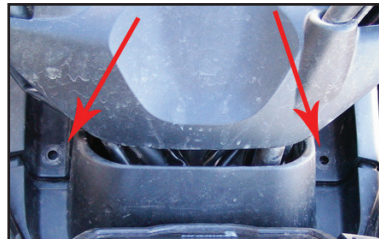
Thank you for purchasing a genuine Two Brothers Racing JUICE BOX™. This product represents a radical step forward in tuning fuel-injected motorcycles and ATVs for optimal performance using "load-based" technology. We at Two Brothers Racing hope that you will find this development as exciting and useful as we do. And remember: Proper Fuel = Maximum Power!

1. Make sure the vehicle is completely cool before starting the installation. Also, make sure the vehicle is secure and will not roll around.
2. Remove the seat.
3. Remove the battery cover by lifting up (Fig 1), then remove the 4 plastic fasteners from the fuel tank cover (Fig 2) and remove.

Fig 1



Fig 2



4. Remove the plastic fasteners (Fig 3 & 4) and 4mm Allen socket head (Fig. 5) from the left and right side panels, along with the dipstick access panel. (Fig 4).

Fig 3

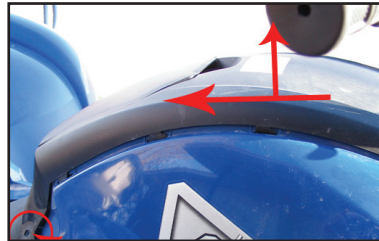
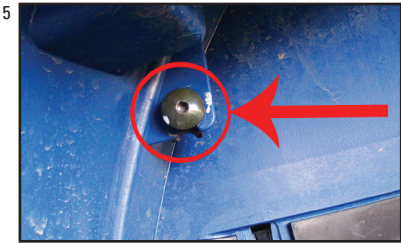


Fig 4



Fig 5



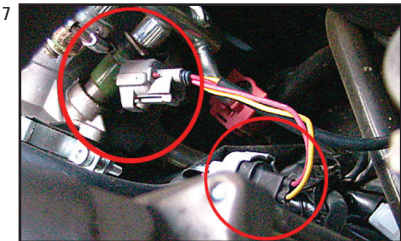
5. Route the JUICE BOX™ wires along the right hand side of the ATV (Fig 6) and down between the fuel tank and the cross member towards the injector.

Fig 6



6. Now locate the fuel injector from the left hand side of the ATV (Fig 7).

Fig 7



7. Unplug the stock grey fuel injector connector. Plug the JUICE BOX™ grey connector onto the injector and plug the stock injector connector to the black JUICE BOX™ connector (Fig 7).

8. Attach the JUICE BOX™ ground wire (black) to one of the fuel tank 10mm mounting bolts.

9. Start the ATV. The green LED should now be scrolling for about 3-5 seconds and then go to 1-2 steady green LED's or a single slow flashing green LED. If the number 1 green and number 8 red LED's continue flashing after startup, an injector wiring error is indicated. Re-check the wires from the JUICE BOX™ and make sure they are connected to the proper wire of your ATV's stock harness. MAKE SURE you have the correct connectors selected in the stock harness. DO NOT PROCEED UNLESS ABOVE CONDITIONS ARE MET.

10. Reassemble the ATV.

11. NOTE: Re check your wire routing and JUICE BOX™ location and make certain that in no way the wires can come into contact with any moving parts or high heat source and that the JUICE BOX™ is mounted in a way as to not cause a handling problem with the machine.



401 South Grand Ave., Santa Ana, CA 92705
Tel: 714.550.6070 Fax: 714.550.9661 www.twobros.com

Two Brothers Racing

Juice Box™ - Fuel Controller

2007-08 Yamaha Grizzly 700 Installation & Operation Manual
Part # 008-179



Cleaning

If the unit requires cleaning, use a cloth that is only lightly dampened with water or mild detergent.

Operation Manual

1. It is recommended that the pre-programmed settings of the Juice Box™ be used. However, the Juice Box™ can be adjusted to suit different engine modifications, states of tune and environmental conditions. To begin this process, press the mode button. To enter each successive mode, just press the mode button again. Note that every mode will be identifiable by the color(s) of the flashing LED(s) on the LED display. **There are six modes** that are distinguished by an LED color or color combination. **The 6 modes are as follows, respectively: Green, Yellow, Red, Green-Blue, Yellow-Blue and Red-Blue.**
2. You are now ready to manually program each mode. Consult the base settings supplied with the unit.

To program the Juice Box™, the bike must be running in order to supply power to the Juice Box™.

Simply press the mode button to activate the first mode. If at anytime you stay in an adjustment mode for longer **than 5 seconds** without pressing any buttons, the Juice Box™ will exit the adjustment mode and will return to the operational mode.

To save settings in a particular mode press the MODE button which goes to the next adjustable mode or wait for the Juice Box™ to exit back to the operational mode.

The settings in each mode are adjusted by pressing the (+) and (-) buttons located on the right and left side of the mode button, respectively. For easy reference, the LEDs are numbered 1 through 8. However, the LEDs can be adjusted to the following positions: 0.5, 1, 1.5, 2, 2.5, 3, 3.5, 4, 4.5, 5, 5.5, 6, 6.5, 7, 7.5, 8. For example, in a particular mode, if LED 4 is flashing then the LED display is set to 4 in that mode. If the (+) button is pressed once then LEDs 4 and 5 will flash simultaneously and the LED display is set to 4.5. If the (+) button is pressed once again, only LED 5 will flash and the LED display is set to 5. The LED display can also be set to 0.5 by pressing the (-) button and scrolling the colored LED to position 1 and then pressing the (-) button once more until the LED in position 1 is flashing twice as fast as normal.

I. **The first mode** (Green Mode) represents an additional amount of fuel added under cruise conditions. A flashing green LED should appear on the LED display. To add more fuel, scroll the flashing green LED to the right using the (+) button. To add less fuel, scroll the flashing green LED to the left using the (-) button. If you set the flashing green LED to the 0.5 position on the LED display, **no fuel will be added to the stock fuel curve.**

II. **The second mode** (Yellow Mode) represents an additional amount of fuel added during acceleration. A flashing yellow LED should appear on the LED display. To add more fuel, scroll the flashing yellow LED to the right using the (+) button. To add less fuel, scroll the flashing yellow LED to the left using the (-) button. If you set the flashing yellow LED to the 0.5 position on the LED display, **no fuel will be added to the stock fuel curve.**

III. **The third mode** (Red Mode) represents an additional amount of fuel added during full throttle conditions. A flashing red LED should appear on the LED display. To add more fuel, scroll the flashing red LED to the right using the (+) button. To add less fuel, scroll the flashing red LED to the left using the (-) button. If you set the flashing red LED to the 0.5 position on the LED display, **no fuel will be added to the stock fuel curve.**

Note: If the flashing green, yellow and red LEDs in modes 1 through 3 (Green, Yellow and Red) are set to the 0.5 position on the LED display then the Juice Box™ will not add any fuel to the bike's stock fuel curve. This setting will essentially turn off the Juice Box™ even though it is still attached to the bike's fuel injection system. The bike will run as though the Juice Box™ is not installed. The Juice Box™ LEDs will still operate normally even though no fuel is being added.

IV. **The fourth mode** (Green-Blue Mode) is an adjustment to determine the point on the RPM range when the cruise/Green Mode fuel turns ON. A flashing green LED appears on the LED display while at the same time a flashing blue LED appears on the 8th LED. The cruise/Green Mode fuel can be set to turn on at idle or just above idle at a point selected by the user by adjusting the green LED in this mode. The Green-Blue mode is RPM based only. Each LED position represents a specific RPM on your bike. In this case, LED 0.5 will turn ON the cruise/Green Mode fuel at 1,200 RPM and LED 8 will turn ON the cruise/Green Mode fuel at 1,800 RPM. Each LED setting in between 0.5 and 8 will turn ON the cruise/Green Mode fuel in between the above-mentioned RPM points. You can calculate what RPM corresponds to what LED by interpolation. If at idle, the Green LED is solid, then the Green Mode is active and the Green-Blue LED is set to a RPM that is lower than the idle RPM of the ATV; Green Mode fuel is being added at idle. If at idle, the Green LED is slowly flashing, then the Green Mode is NOT active and the Green-Blue LED is set to a RPM that is higher than the idle RPM of the ATV; Green Mode fuel is NOT being added at idle.

V. **The fifth mode** (Yellow-Blue Mode) is an adjustment to determine the time when the acceleration/Yellow Mode fuel amount turns on. A flashing yellow LED appears on the LED display while at the same time a flashing blue LED appears on the 8th LED. To increase the sensitivity and therefore cause the Yellow Mode fuel to turn on sooner, scroll the flashing yellow LED to the left using the (-) button. To decrease the sensitivity and therefore cause the Yellow Mode fuel to turn on later, scroll the flashing yellow LED to the right using the (+) button.

VI. **The sixth mode** (Red-Blue Mode) is an adjustment to determine the time when the full throttle/Red Mode fuel amount turns on. A flashing red LED appears on the LED display while at the same time a flashing blue LED appears on the 8th LED. To increase the sensitivity and therefore cause the Red Mode fuel to turn on sooner, scroll the flashing red LED to the left using the (-) button. To decrease the sensitivity and therefore cause the Red Mode fuel to turn on later, scroll the flashing red LED to the right using the (+) button.



401 South Grand Ave., Santa Ana, CA 92705
 Tel: 714.550.6070 Fax: 714.550.9661 www.twobros.com

Two Brothers Racing

Juice Box™ - Fuel Controller

2007-08 Yamaha Grizzly 700 Installation & Operation Manual
 Part # 008-179

Operation Manual - JUICE BOX™ Settings

Pre-set Settings: Grizzly 700 with stock airbox, TBR Slip-on exhaust with spark arrestor and P1 Power Tip installed. (G=1.5, Y=2, R=1, GB=6.5, YB=4, RB=4)



Additional Tested Setting: Grizzly 700 with stock airbox, TBR Slip-on exhaust with NO spark arrestor and NO P1 Power Tip installed. (G=5.5, Y=4, R=2, GB=6, YB=4, RB=4)



For Race Use Only

The Juice Box™ is legal ONLY for closed course race vehicles. The Juice Box™ is not applicable, nor intended for use on EMISSIONS CONTROLLED street, highway or off-road vehicles. The Juice Box™ is not applicable, nor intended for use on aircraft.

For additional settings please visit our website at www.twobros.com.