



401 South Grand Ave., Santa Ana, CA 92705
Tel: 714.550.6070 Fax: 714.550.9661 www.twobros.com



2005-06 Honda CBR600RR

Complete Exhaust System
Part # 005-120406M / 005-120407M / 005-120408M



Parts List

| Qty. | Description | Part Number |
|------|---|--------------|
| 1 | CBR600RR (05-06) M-2 Muffler Canister | Varies |
| 2 | CBR600RR (05-06) Slip-On Tube | 005-1204T |
| 1 | HARDWARE KIT | 005-12-3 |
| 1 | X-Lite™ V.A.L.E.™ Retaining Ring | 005-7-2-3KIT |
| 1 | CBR600RR (05-06) Muffler Canister Clamp | 005-2C-6A |
| 1 | 64mm Barrel Clamp | 005-27-64MSH |
| 1 | "L" Brackets "Set of 2" | 005-12-B |
| 2 | 8 x 16mm Flange Bolts | 005-FB816 |
| 4 | 8mm Flange Nuts | 005-FN8 |
| 1 | Permatex Black Gasket Maker | 031-P22072 |

IMPORTANT - PLEASE READ CAREFULLY

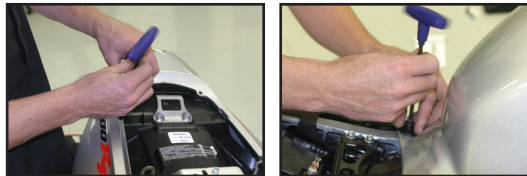
We recommend that this performance part be installed by a qualified motorcycle technician. If you have any doubts as to your ability to install this performance part, please consult with your local motorcycle dealer. Read all instructions first before starting installation. Make sure the motorcycle and exhaust system are completely cool before starting the installation. Also, make sure the bike is secure on a centerstand or ideally a service lift during installation. Be sure to save all stock components for possible use later.

Installation Instructions

1. Make sure the bike is completely cool before starting the installation. Make sure the bike is secure on the sidestand or ideally a rear service stand.
2. Remove passenger seat and main seat.



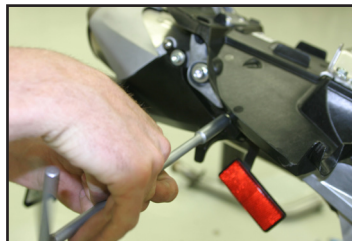
3. Remove bolts and pop-outs from rear cowling and slide cowling back.



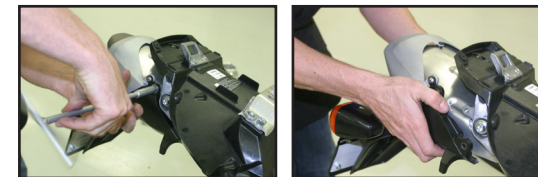
4. Disconnect modular connector on the left side of the bike leading to the tail light assembly.



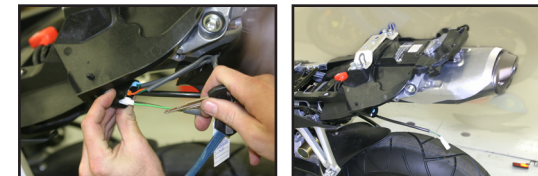
5. Remove left & right reflectors.



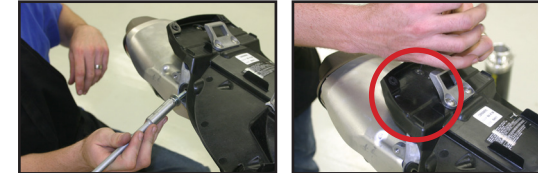
6. Remove the tail light assembly bolts and slip the tail light assembly back.



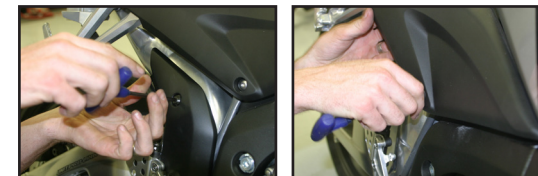
7. Disconnect modular connectors on the left side of the bike and remove the tail light assembly.



8. Remove the two side bolts and one top bolt securing the heat shield.



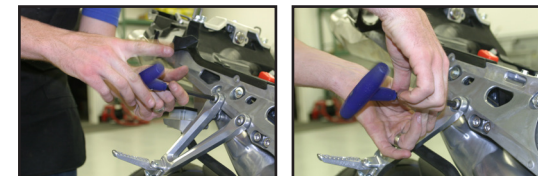
9. Remove right side plastic covers from over exhaust tube heat shield and under gas tank.



10. Remove bolt securing lower end of exhaust tube heat shield (above driver's right footpeg mount).

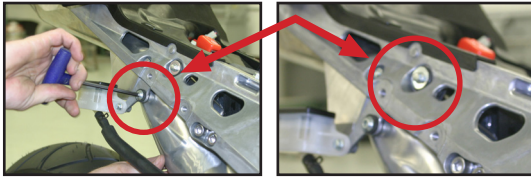


11. Remove right side passenger footpeg.

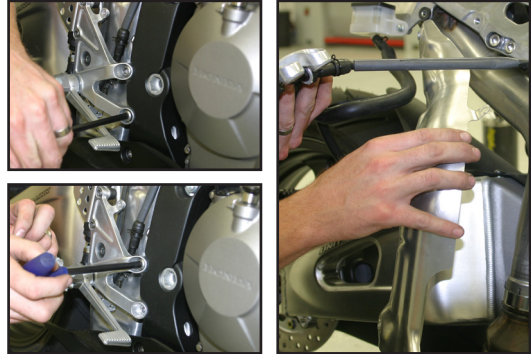


Installation Instructions Continued

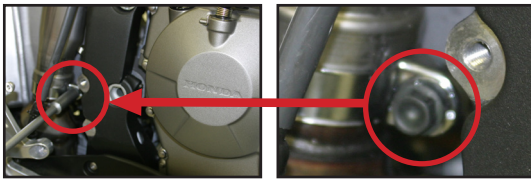
12. Remove upper exhaust tube heat shield mounting bolts.



13. Remove right side driver's footpeg bolts and carefully remove the exhaust tube heat shield.



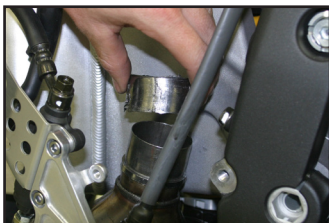
14. Loosen the OEM barrel clamp connecting the exhaust tube and header.



15. Carefully remove muffler & exhaust tube.

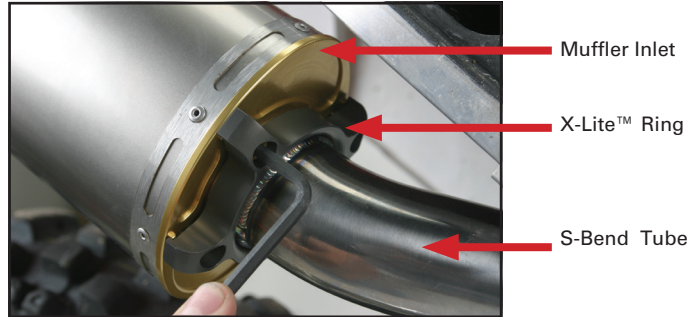


16. Remove metal OEM exhaust gasket.



17. Assemble the V.A.L.E.™ unit by slipping the S-bend tube through the X-Lite™ ring. Use the 4 (four) 6 x 14mm bolts and split lock washers and loosely attach the X-Lite™ ring to muffler inlet.

V.A.L.E.™ Assembly Detail



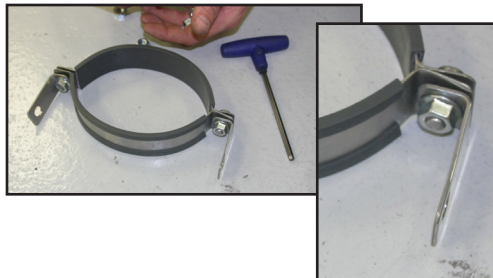
18. Attach the X-Lite™ V.A.L.E.™ assembly to the muffler canister using the 4 (four) 6 x 14mm socket head cap screws. Leave loose for now.



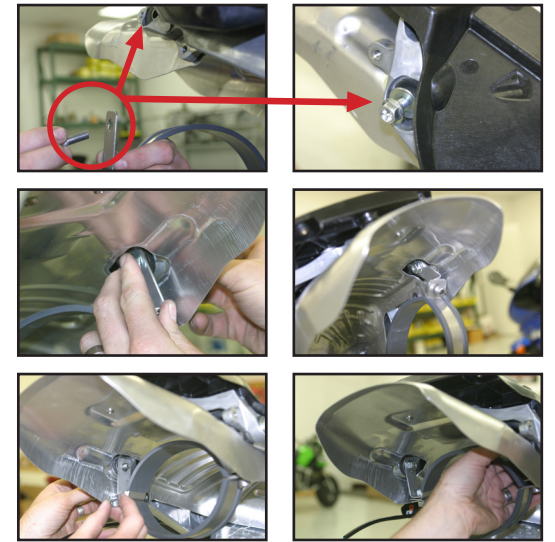
19. Apply a bead of high-temp sealant to the inside of the lower end of the exhaust tube.



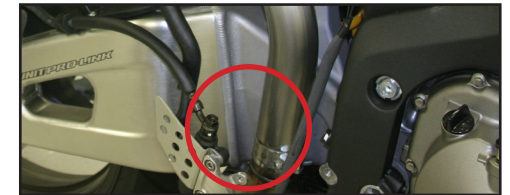
20. Assemble the 2 (two) halves of the muffler clamp and "L" brackets as shown below using the supplied 8mm flange nuts and 8mm socket head cap screws.



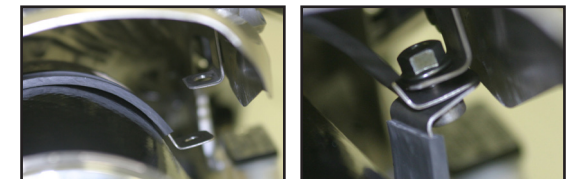
21. Attach muffler clamp assembly under heat shield.



22. Remove upper & lower half of muffler clamp assembly and carefully slide muffler assembly into place making sure that exhaust tube & barrel clamp slip over collector.

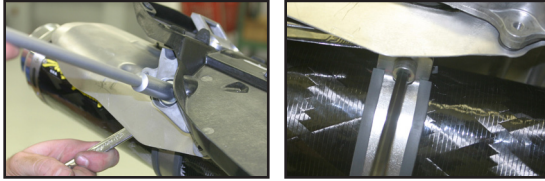


23. Slip upper & lower halves of muffler clamp onto muffler canister and attach to "L" brackets using supplied 8mm flange nuts and 8mm socket head cap screws.

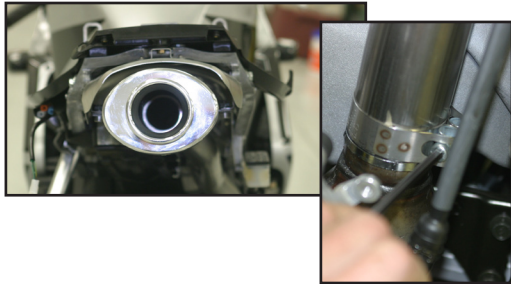


Installation Instructions Continued

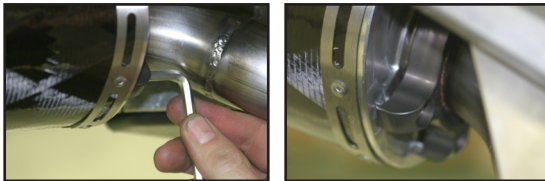
24. Making sure that the muffler canister is aligned correctly, securely tighten the flange bolts connecting the "L" brackets to the bike and the 8mm socket head cap screws connecting the muffler clamp halves to the "L" brackets



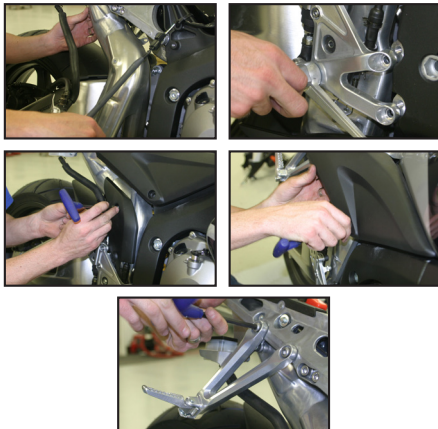
25. Securely tighten barrel clamp.



26. Securely tighten the 6mm x 14mm socket head cap screws in the X-Lite™ V.A.L.E.™ assembly.

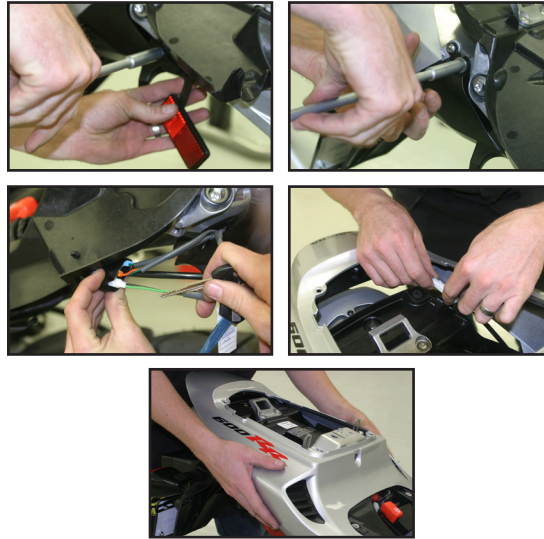


27. Replace exhaust tube heat shield, driver's footpeg, plastics over exhaust tube heat shield and under gas tank and passenger footpeg.
28. Replace reflectors and tail light assembly,



reconnect wiring and replace rear cowl, passenger & driver seats.

29. Before you run the bike, clean off all fingerprints



and dirt, as any oily residue will etch the metal and become somewhat permanent when the system gets hot. Run the bike and enjoy. It is normal for some white smoke to appear the first time you start the bike. This is packing/manufacturing oil from inside the pipe burning off. Check for gaps or leaks. If you find a leak, a little high temperature silicon sealant should fix it. After 50 to 100 miles, recheck all fasteners for tightness.



| Qty. | Description | Part Number |
|------|---|--------------|
| 1 | CBR600RR (05-06) M-2 Muffler Canister | Varies |
| 2 | CBR600RR (05-06) Slip-On Tube | 005-1204T |
| 1 | HARDWARE KIT | 005-12-3 |
| 1 | X-Lite™ V.A.L.E.™ Retaining Ring | 005-7-2-3KIT |
| 1 | CBR600RR (05-06) Muffler Canister Clamp | 005-2C-6A |
| 1 | 64mm Barrel Clamp | 005-27-64MSH |
| 1 | "L" Brackets "Set of 2" | 005-12-B |
| 2 | 8 x 16mm Flange Bolts | 005-FB816 |
| 4 | 8mm Flange Nuts | 005-FN8 |
| 1 | Permatex Black Gasket Maker | 031-P22072 |

Care & Cleaning

Care & Cleaning

Keep system free of dirt and moisture. Store in a cool, dry place. Make sure vehicle is completely cool before maintenance.

Stainless Header System: Polished stainless steel pipes will turn a light golden hue after a few heat cycles, this is a normal characteristic of high quality stainless steel. Clean using a mild water based spray cleaner. Always apply cleaner or polish with a soft, clean cloth.

Titanium Header System: Polished titanium pipes will experience color shift ranging from deep blue/purple through amber after a few heat cycles. This is a normal characteristic of high quality titanium. Clean using a mild water based spray cleaner. Always apply cleaner or polish with a soft, clean cloth.

Polished Aluminum Canisters: Use an aluminum or mag wheel polish to restore the bright finish to factory spec.

Brushed Aluminum Canisters: Clean using a mild water based spray cleaner. Always apply cleaner or polish with a soft, clean cloth.

Carbon Fiber Canisters: Clean using a mild water based spray cleaner. Always apply cleaner or polish with a soft, clean cloth. Always make sure the fiberglass packing inside is in good condition and not burned out, as exhaust heat inside an empty canister will deteriorate the carbon fiber sleeve. TBR sells repack kits (Road - #005-10038, Offroad - #005-10038MX) that include everything you need to easily do it yourself.

Titanium Mufflers: For cleaning use a mild water based spray cleaner. Always apply cleaner or polish with a soft, clean cloth. Always make sure the fiberglass packing inside is in good condition and not burned out, as exhaust heat inside an empty canister will deteriorate the carbon fiber sleeve. TBR sells repack kits (Road - #005-10038, Offroad - #005-10038MX) that include everything you need to easily do it yourself.

Repack all road canisters every 3,000 miles. Part #005-10038

Repack all offroad canisters after every 10 hours of use. Part #005-10038MX

NEVER dyno test your bike with carbon fiber or titanium canisters installed - the intense heat and lack of cooling air can quickly burn through the canister material. Two Brothers Racing does not provide a warranty for burned canisters.

Warranty

Two Brothers Racing products are intended for closed course competition purposes only, and therefore are sold "as is" without warranty. Two Brothers Racing specifically disclaims any warranties of merchantability or fitness for a particular purpose and disclaims all responsibility for consequential and incidental damages or any other losses arising from the use of these products or parts.