



401 South Grand Ave., Santa Ana, CA 92705  
Tel: 714.550.6070 Fax: 714.550.9661 www.twobros.com



2004-09 Yamaha

**FZ6**

V.A.L.E.™ Slip-On Exhaust System with Dual M-2 Exhaust Canisters  
Part # 005-1170406V, 005-1170407V, 005-1170408V



Parts List



Qty.	Description	Part Number
1	Left Side V.A.L.E.™ M-2 Muffler Canister	Varies
1	Right Side V.A.L.E.™ M-2 Muffler Canister	Varies
2	Canister Clamp with Rubber Liner	Varies
1	Slip-On Tube	005-117045
1	HARDWARE KIT	005-117-3
2	X-Ring	005-7-2-3KIT
1	Barrel Band Clamp	005-27-61MSH
3	8x20mm Flange Bolts	005-FB820
3	8mm Nuts	005-FN8
1	Large Washer	005-W0516
1	License Plate Bracket	005-11704B
2	License Plate Lamps	005-8504LT2
2	Replacement Turn Signals	005-88T2
6	Butt Splice Wire Connectors	005-BS1614
1	Permatex Hi-Temp Sealant	031-P22072
1	TBR Sticker Kit	015-10212

**IMPORTANT - PLEASE READ CAREFULLY**

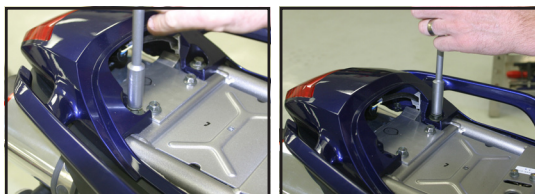
We recommend that this performance part be installed by a qualified motorcycle technician. If you have any doubts as to your ability to install this performance part, please consult with your local motorcycle dealer. Read all instructions first before starting installation. Make sure the motorcycle and exhaust system are completely cool before starting the installation. Also, make sure the bike is secure on a centerstand or ideally a service lift during installation. Be sure to save all stock components for possible use later.

**Installation Instructions**

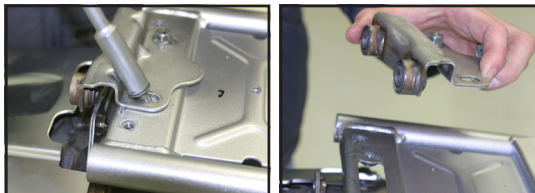
1. Make sure the bike is completely cool before starting the installation. Make sure the bike is secure on a centerstand or ideally a service lift.
2. Remove seat. Remove bolts from lower plastic cowling below seat.



3. Remove bolts securing rear cowling. Remove rear cowling from bike



4. Remove bolts securing the tailpiece bracket



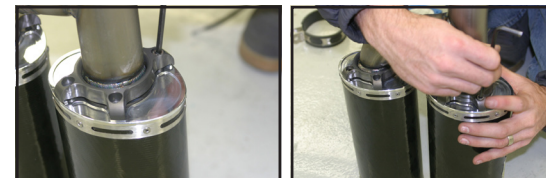
5. Unhook modular connectors on the left side of the bike leading to the tail light assembly.



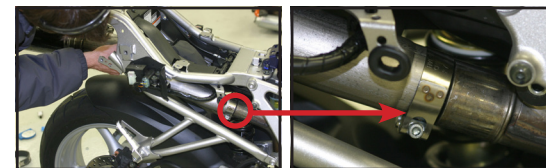
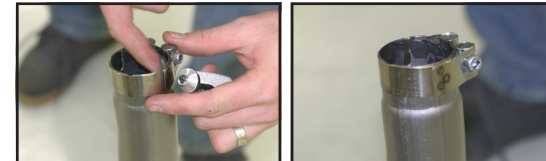
6. Loosen OEM clamp securing exhaust tube to header and carefully remove OEM muffler assembly.



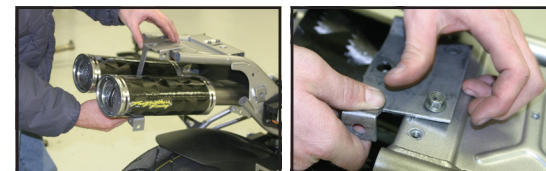
7. Align muffler canisters with V.A.L.E.™ assembly, making sure the Two Brothers name badges are facing outward. Use the supplied 6 x 14mm socket head cap screws and split lock washers and loosely attach each muffler canister to its X-Lite™ ring.



8. Apply a bead of supplied high-temp sealant around the inside of the new slip tube. Slip the canister/slip tube (V.A.L.E.™) assembly into place and loosely tighten the supplied barrel band clamp.



9. Slip new license plate bracket into place between the two canisters and secure to seat mounting plate using OEM bolts.





Absolute Top Level®

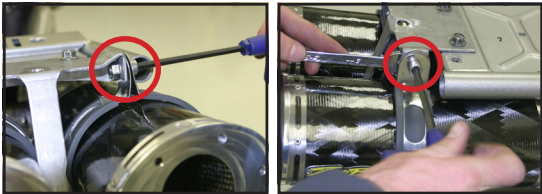
401 South Grand Ave., Santa Ana, CA 92705  
Tel: 714.550.6070 Fax: 714.550.9661 www.twobros.com



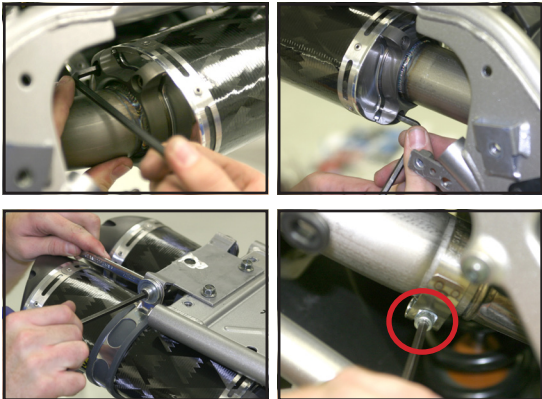
**2004-09 Yamaha  
FZ6**

V.A.L.E.™ Slip-On Exhaust System with Dual M-2 Exhaust Canisters  
Part # 005-1170406, 005-1170407, 005-1170408

- Carefully slip a rubber muffler clamp over each canister. Attach each clamp to the seat mounting plate as shown using supplied bolts and nuts. Make sure that the clamp's mounting tabs are to the outside of the bike's mounting bracket. Making sure that the V.A.L.E.™ assembly is oriented correctly, loosely tighten the muffler clamp mounting bolts.

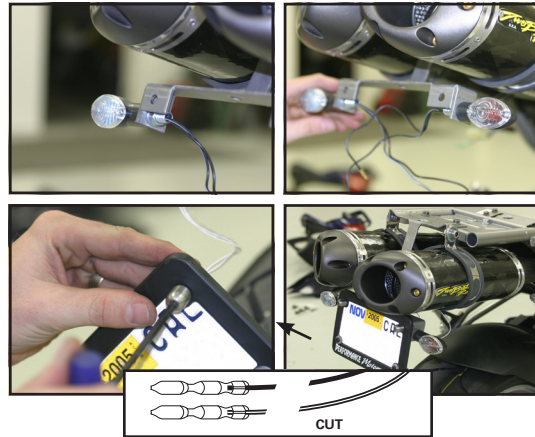


- Making sure that the canisters are properly aligned, securely tighten the canister mounting bolts, the 4 (four) 6 x 14mm hex head bolts, of the V.A.L.E.™ assembly for each muffler canister, and the barrel clamp.

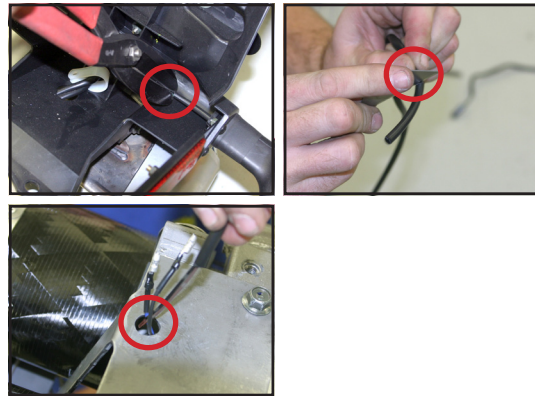


**Installation Instructions**

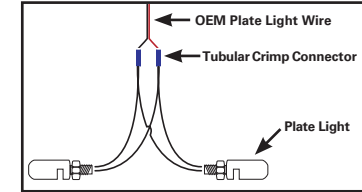
- Attach left and right turn signals and plate lights to license plate mounting frame as shown. Cut off metal connectors from ends of turn signals and discard. Strip away 1/4 inch of insulation from each wire.



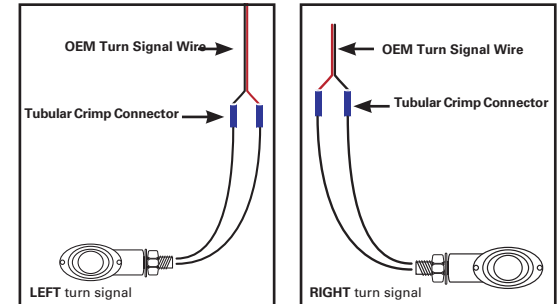
- Clip wiring to OEM turn signals & plate lights and remove wiring harness from tail section. Remove 2 1/2 in. of outer wiring harness cover to expose wires. Route clipped end of OEM wiring harness through the hole in the new license plate holder and behind license plate frame.



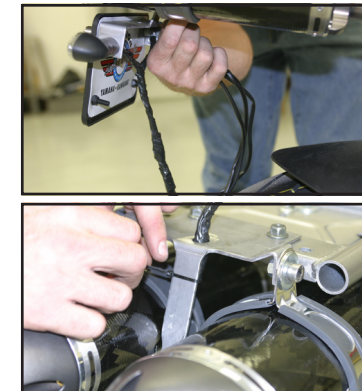
- Plate light wiring:** Strip 1/4 inch of insulation from the end of one of the supplied 3 inch wires leaving 2 exposed ends. Take one wire from each plate light and twist the ends together. Repeat for the other two plate light wires. Insert one twisted pair of wires into one end of a tubular crimp connector and the stripped end of one OEM plate light wire into the other end of the connector. Crimp with a crimping tool to secure. Repeat with the other twisted pair from the plate lights and the other OEM plate light wire.



- Turn signal wiring:** Strip 1/4 inch of insulation from the end of the supplied 6 inch wire leaving 2 exposed ends. Attach LEFT turn signal to 6 inch supplied wire as shown and crimp with a crimping tool to secure. Repeat with RIGHT turn signal.



- Wrap exposed wiring with electrical tape and secure to plate frame using supplied zip ties.





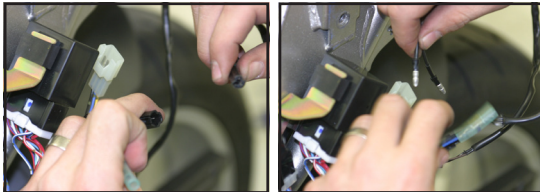
401 South Grand Ave., Santa Ana, CA 92705  
Tel: 714.550.6070 Fax: 714.550.9661 www.twobros.com



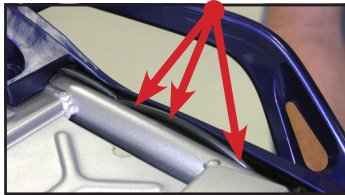
**2004-09 Yamaha  
FZ6**

V.A.L.E.™ Slip-On Exhaust System with Dual M-2 Exhaust Canisters  
Part # 005-1170406, 005-1170407, 005-1170408

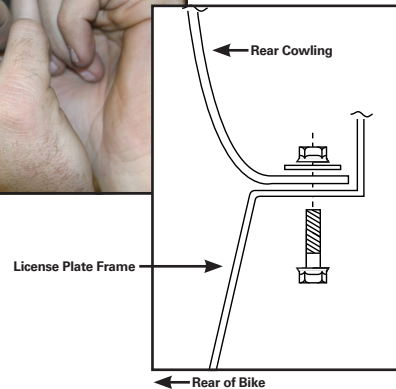
17. Re-attach wiring harness to the main wiring loom.



18. Secure the harness by tucking it into the gap between the frame and side panel.

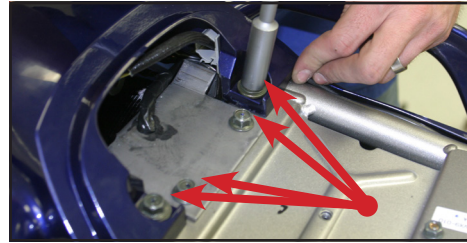


19. Using the supplied bolt, nut and large O.D. washer, attach rear cowling to license plate frame.



**Installation Instructions**

20. Securely tighten the bolts holding the rear cowling & plate frame.



21. Reinstall and securely attach all cowling/cover bolts.

22. Carefully double check your work to insure that all hardware is securely fastened and all wiring is away from contact with exhaust canisters and tubing.

23. Before you run the bike, clean off all fingerprints and dirt, as any oily residue will etch the metal and become somewhat permanent when the system gets hot. Run the bike and enjoy. It is normal for some white smoke to appear the first time you start the bike. This is packing/manufacturing oil from inside the pipe burning off. Check for gaps or leaks. If you find a leak, a little high temperature silicon sealant should fix it. After 50 to 100 miles, recheck all fasteners for tightness.



Qty.	Description	Part Number
1	Left Side V.A.L.E.™ M-2 Muffler Canister	Varies
1	Right Side V.A.L.E.™ M-2 Muffler Canister	Varies
2	Canister Clamp with Rubber Liner	Varies
1	Slip-On Tube	005-11704S
1	HARDWARE KIT	005-117-3
2	X-Ring	005-7-2-3KIT
1	Barrel Band Clamp	005-27-61MSH
3	8x20mm Flange Bolts	005-FB820
3	8mm Nuts	005-FN8
1	Large Washer	005-W0516
1	License Plate Bracket	005-11704B
2	License Plate Lamps	005-8504LT2
2	Replacement Turn Signals	005-88T2
6	Butt Splice Wire Connectors	005-BS1614
1	Permatex Hi-Temp Sealant	031-P22072
1	TBR Sticker Kit	015-10212

**Care & Cleaning / Warranty Information**

**Care & Cleaning**

Keep system free of dirt and moisture. Store in a cool, dry place. Make sure vehicle is completely cool before maintenance.

**Stainless Header System:** Polished stainless steel pipes will turn a light golden hue after a few heat cycles, this is a normal characteristic of high quality stainless steel. Clean using a mild water based spray cleaner. Always apply cleaner or polish with a soft, clean cloth.

**Titanium Header System:** Polished titanium pipes will experience color shift ranging from deep blue/purple through amber after a few heat cycles. This is a normal characteristic of high quality titanium. Clean using a mild water based spray cleaner. Always apply cleaner or polish with a soft, clean cloth.

**Polished Aluminum Canisters:** Use an aluminum or mag wheel polish to restore the bright finish to factory spec.

**Brushed Aluminum Canisters:** Clean using a mild water based spray cleaner. Always apply cleaner or polish with a soft, clean cloth.

**Carbon Fiber Canisters:** Clean using a mild water based spray cleaner. Always apply cleaner or polish with a soft, clean cloth. Always make sure the fiberglass packing inside is in good condition and not burned out, as exhaust heat inside an empty canister will deteriorate the carbon fiber sleeve. TBR sells repack kits (Road - #005-10038, Offroad - #005-10038MX) that include everything you need to easily do it yourself.

**Titanium Mufflers:** For cleaning use a mild water based spray cleaner. Always apply cleaner or polish with a soft, clean cloth. Always make sure the fiberglass packing inside is in good condition and not burned out, as exhaust heat inside an empty canister will deteriorate the carbon fiber sleeve. TBR sells repack kits (Road - #005-10038, Offroad - #005-10038MX) that include everything you need to easily do it yourself.

Repack all road canisters every 3,000 miles. Part #005-10038

Repack all offroad canisters after every 10 hours of use. Part #005-10038MX

**NEVER** dyno test your bike with carbon fiber or titanium canisters installed - the intense heat and lack of cooling air can quickly burn through the canister material. Two Brothers Racing does not provide a warranty for burned canisters.

**Warranty Information**

Two Brothers Racing products are intended for closed course competition purposes only, and therefore are sold "as is" without warranty. Two Brothers Racing specifically disclaims any warranties of merchantability or fitness for a particular purpose and disclaims all responsibility for consequential and incidental damages or any other losses arising from the use of these products or parts.