



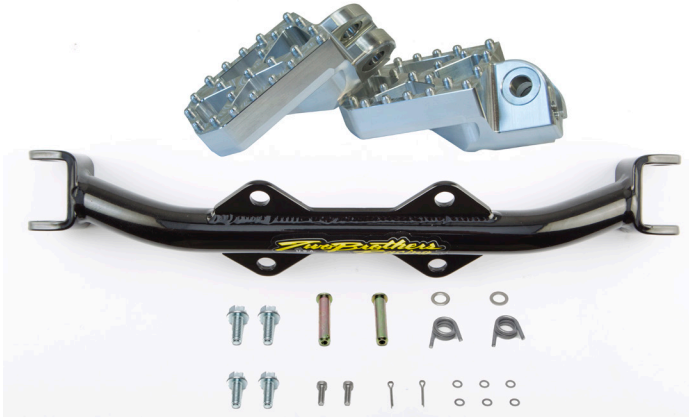
WWW.TWOBROS.COM

167 Via Trevizio Corona, CA 92879 - (800) 211-2767

Two Brothers Racing

Heavy Duty Billet Aluminum Footpegs Kit

Part # 024-8-02



Parts List

Qty.	Description	Part Number
1	Billet Aluminum Peg Set (left & right)	024-8-29M
2	Peg Springs	022-8-29S
2	M5x12 Low Profile Socket Head Cap Screws	005-LSH512
2	3/32" x 3/4" Cotter Pin	005-CP33234
2	10mm Washers	005-WF10-AN
6	5mm Flat Washers	005-WF5-AN
1	Peg Bar	024-8-02B
4	8x20mm Flange Bolt	005-FB820
2	Footpeg Pin	022-8-02P

IMPORTANT - PLEASE READ CAREFULLY

We recommend that this performance part be installed by a qualified motorcycle technician. If you have any doubts as to your ability to install this performance part, please consult with your local motorcycle dealer. Read all instructions first before starting installation. Make sure the vehicle and exhaust system are completely cool before starting the installation. Also, make sure the vehicle is secure on a centerstand or ideally a service lift during installation. Be sure to save all stock components for possible use later.

Warranty

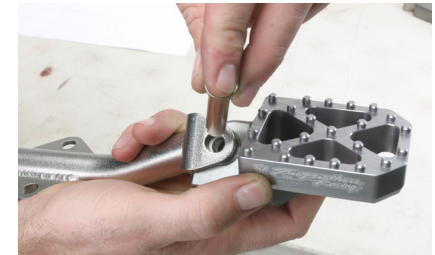
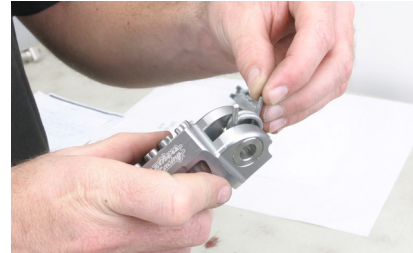
Two Brothers Racing products are intended for closed course competition purposes only, and therefore are sold "as is" without warranty. Two Brothers Racing specifically disclaims any warranties of merchantability or fitness for a particular purpose and disclaims all responsibility for consequential and incidental damages or any other losses arising from the use of these products or parts.

Installation Instructions

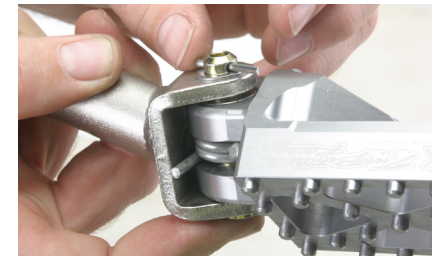
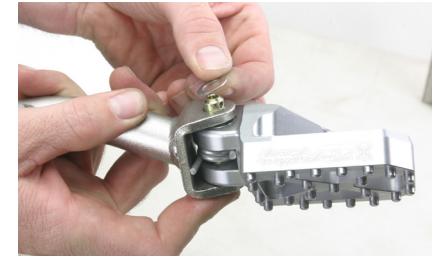
1. Secure motorcycle on centerstand or service lift.
2. Note: Footpegs are marked "L" and "R" for the left and right sides.
3. Use the M5x16 socket head cap screws with small washers for peg height adjustment. Add or subtract the number of washers for height changes. Use threadlock.



4. Install pins and springs. These are the same for each side.



5. Install washer (inside or outside of mount depending on application), pin and cotter pin.



6. Bend the cotter pin tabs to secure them from coming off.