



WWW.TWOBROS.COM

167 Via Trevizio Corona, CA 92879 - (800) 211-2767

**YAMAHA**  
2015+ R1  
PART# 005-53102-DB



**Parts List**

**BILL OF MATERIALS**

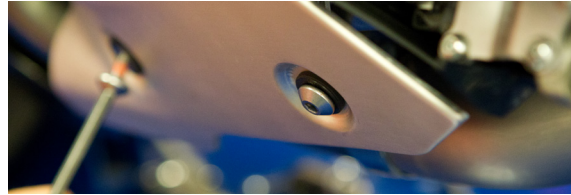
|   |   |              |
|---|---|--------------|
| 1 | DB Pro Muffler                            | 005-DBPRO-M  |
| 1 | R1 Slip-Tube                              | 005-42604S   |
| 1 | Hardware Kit                              | 005-531-HK   |
| 2 | 65mm Barrel Clamps                        | 005-27-66MSH |
| 1 | Bolt On Mounting Bracket                  | 005-147-19-3 |
| 1 | M8x40mm Socket Head Cap Screw             | 005-SH840    |
| 1 | M8x20mm Socket Head Cap Screw             | 005-SH820    |
| 1 | M8x16mm Socket Head Cap Screw             | 005-SH816    |
| 2 | M8 Flange Nut                             | 005-FN8      |
| 1 | M8 Flat Washer                            | 005-WF8      |
| 2 | O2 Sensor Plug Kit                        | 005-92-22KIT |
| 2 | 45mm Swivel Hook Springs                  | 005-S45      |
| 1 | Spring Puller                             | 005-SP       |
| 1 | DB Pro Insert Kit                         | 005-DBPRO-1K |
| 1 | dB Killer insert (Outlet / Pre-Installed) | 005-DB-CR    |
| 1 | dB Killer Insert (Inlet)                  | 005-MC-DB3   |
| 2 | M6x16 Socket Head Cap Screw               | 006-SH616    |

**IMPORTANT - PLEASE READ CAREFULLY**

*We recommend that this performance part be installed by a qualified motorcycle technician. If you have any doubts as to your ability to install this performance part, please consult with your local motorcycle dealer. Read all instructions first before starting installation. Make sure the motorcycle and exhaust system are completely cool before starting the installation. Also, make sure the bike is secure on a centerstand or ideally a service lift during installation. Be sure to save all stock components for possible use later.*

**Installation Instructions**

1. Make sure the bike is completely cool before starting the installation. Make sure the bike is secure on a rear stand or ideally a service lift.
2. Remove right ex-up cover, OEM muffler and bracket.



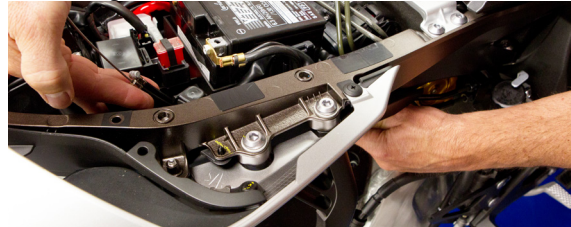
3. Remove servo cables from exhaust.
4. Remove rider and passenger seat, battery cover and plastic tail cover.



5. Remove servo retaining bolt and lift up to access servo cover screws. Remove cover and servo cables



6. Remove servo cables from motorcycle from top through bottom.



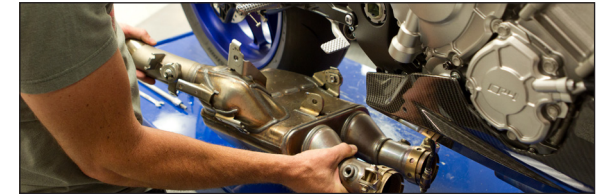
7. Re-install servo motor and secure in place with retaining bolt. \* Must reconnect servo motor



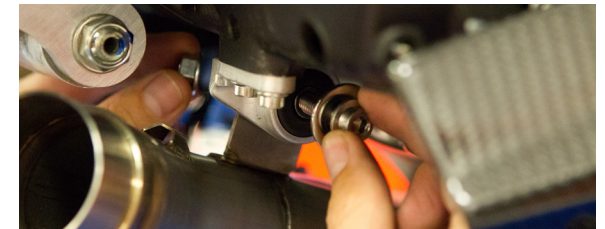
8. Re-install covers and seats.



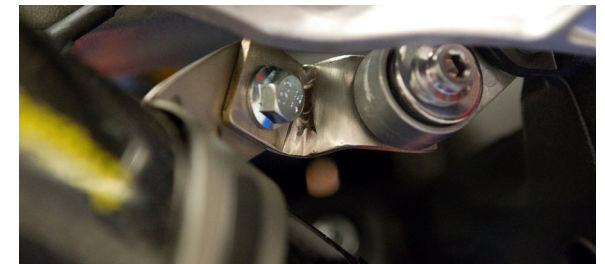
9. Unplug both O2 Sensors, remove mounting bolts from OEM exhaust and remove from motorcycle.



10. Install TBR Y-Pipe using supplied barrel clamps, OEM Bolt and supplied 8mm Nut on center bracket.



11. Attached supplied TBR Muffler mounting bracket using the OEM bolt and supplied 8mm nut to OEM Mounting points behind the rearset.





WWW.TWOBROS.COM

167 Via Trevizio Corona, CA 92879 - (800) 211-2767

**YAMAHA**  
2015+ R1  
PART# 005-53102-DB



**Parts List**

**BILL OF MATERIALS**

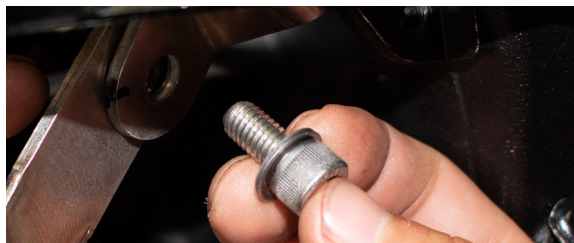
|   |  |              |
|---|--|--------------|
| 1 | DB Pro Muffler                             | 005-DBPRO-M  |
| 1 | R1 Slip-Tube                               | 005-42604S   |
| 1 | Hardware Kit                               | 005-531-HK   |
| 2 | 65mm Barrel Clamps                         | 005-27-66MSH |
| 1 | Bolt On Mounting Bracket                   | 005-147-19-3 |
| 1 | M8x40mm Socket Head Cap Screw              | 005-SH840    |
| 1 | M8x20mm Socket Head Cap Screw              | 005-SH820    |
| 1 | M8x16mm Socket Head Cap Screw              | 005-SH816    |
| 2 | M8 Flange Nut                              | 005-FN8      |
| 1 | M8 Flat Washer                             | 005-WF8      |
| 2 | O2 Sensor Plug Kit                         | 005-92-22KIT |
| 2 | 45mm Swivel Hook Springs                   | 005-S45      |
| 1 | Spring Puller                              | 005-SP       |
| 1 | DB Pro Insert Kit                          | 005-DBPRO-IK |
| 1 | dB Killer instert (Outlet / Pre-Installed) | 005-DB-CR    |
| 1 | dB Killer Insert (Inlet)                   | 005-MC-DB3   |
| 2 | M6x16 Socket Head Cap Screw                | 006-SH616    |

**Warranty**

Two Brothers Racing products are intended for closed course competition purposes only, and therefore are sold "as is" without warranty. Two Brothers Racing specifically disclaims any warranties of merchantability or fitness for a particular purpose and disclaims all responsibility for consequential and incidental damages or any other losses arising from the use of these products or parts.

**Installation Instructions**

- Attach Muffler to Y-Pipe using supplied 8mm bolt, nut and 45mm swivel hook springs



- Re-install both O2 sensors.
- Re-install both lower exhaust covers.
- Remove remaining OEM exhaust body mounting grommets from mounting locations that are not used.
- Double check your work to ensure everything is tight and properly installed.



- Before you run the bike, clean off all fingerprints and dirt, as any oily residue will etch the metal and become somewhat permanent when the system gets hot. Also, remove any plastic film from the name badge(s) and or canister clamp(s). Run the bike and enjoy. It is normal for some white smoke to appear the first time you start the bike. This is packing/manufacturing oil from inside the pipe burning off. Check for gaps or leaks. If you find a leak, a little high temperature silicon sealant should fix it. After 50 to 100 miles, recheck all fasteners for tightness.