



WWW.TWOBROS.COM

167 Via Trevizio Corona, CA 92879 - (800) 211-2767

## Kawasaki

NINJA 650R (06-11)/VERSYS (08-14)/ER-6N (09-11)  
Slip-on Exhaust System with S1R Canister  
Part # 005-14204x



### Parts List

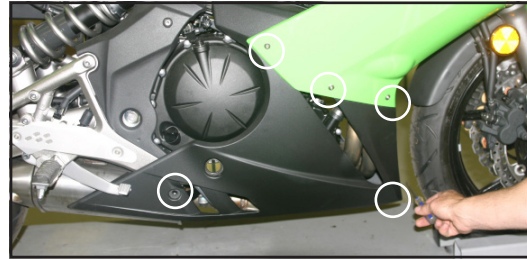
Qty.	Description	Part Number
1	S1R Muffler Canister	Varies
1	Stainless Steel Slip-On Tube	005-14201S
1	Muffler Clamp	005-2C-S1H
1	HARDWARE KIT	005-142-3
2	45mm Springs	005-S45
1	P1 Power Tip™ (Installed)	005-P1
1	8x16mm Flange Bolt	005-FB816
1	8x35mm Flange Bolt	005-FB835
2	8mm Flange Nut	005-FN8
1	Support Bracket	005-142-19
1	Barrel Clamp	005-27-59MSH
1	Spring Puller	005-SP

### IMPORTANT - PLEASE READ CAREFULLY

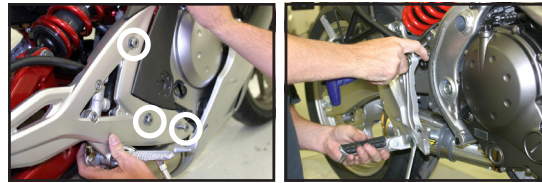
*We recommend that this performance part be installed by a qualified motorcycle technician. If you have any doubts as to your ability to install this performance part, please consult with your local motorcycle dealer. Read all instructions first before starting installation. Make sure the motorcycle and exhaust system are completely cool before starting the installation. Also, make sure the bike is secure on a centerstand or ideally a service lift during installation. Be sure to save all stock components for possible use later.*

### Installation Instructions

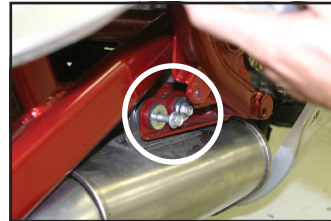
1. Make sure the bike is completely cool before starting the installation. Make sure the bike is secure on the sidestand or ideally a service lift.
2. Remove the right side lower fairing to expose the muffler assembly.



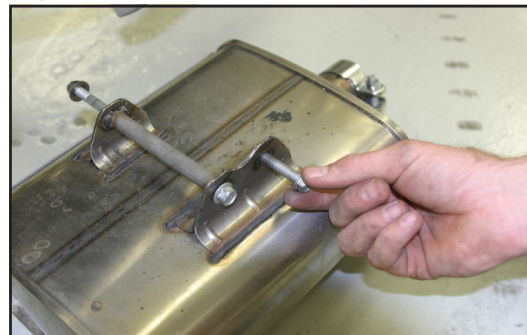
3. Remove the four fasteners on the right side cover.



4. Loosen the muffler clamp attaching the OEM muffler to the head pipe.



5. Remove the two muffler mounting bolts and remove the OEM muffler. You will re-use the front muffler mount bolt and the rear flange nut.



6. Remove the rubber grommet and inserts from the frame where the stock muffler mounted on the left side.



7. Attach supplied muffler mounting bracket to the two rubber mounting supports on right side. Use supplied nut and bolt and previous removed nut and bolt.



8. Slide the (rubber-lined) muffler clamp over the muffler canister and install on bike using supplied barrel clamp.



9. Install supplied 45mm springs from muffler to slip-tube



10. Make all adjustments of slip-on tube rotation and muffler rotation to make sure there is clearance between swingarm/tire and brake pedal when applied.



WWW.TWOBROS.COM

167 Via Trevizio Corona, CA 92879 - (800) 211-2767

## Kawasaki

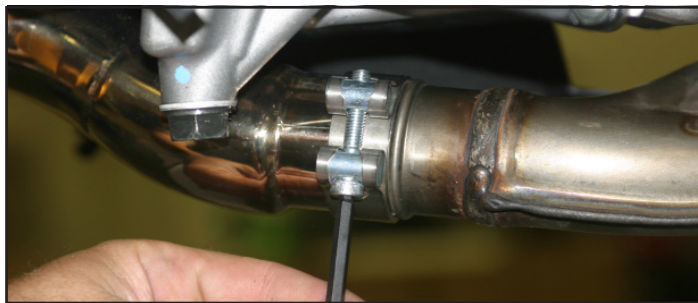
NINJA 650R (06-11)/VERSYS (08-14)/ER-6N (09-11)

Slip-on Exhaust System with S1R Canister

Part # 005-14204x

### Installation Instructions

11. Tighten mounting hardware and clamp on canister then tighten the barrel clamp.



12. Double check all of your work and tighten all hardware.
13. Re-install the lower fairing and side cover.
14. Before you run the bike, clean off all fingerprints and dirt, as any oily residue will etch the metal and become somewhat permanent when the system gets hot. Run the bike and enjoy. It is normal for some white smoke to appear the first time you start the bike. This is packing/manufacturing oil from inside the pipe burning off. Check for gaps or leaks. If you find a leak, a little high temperature silicon sealant should fix it. After 50 to 100 miles, recheck all fasteners for tightness.

### Warranty

Two Brothers Racing products are intended for closed course competition purposes only, and therefore are sold "as is" without warranty. Two Brothers Racing specifically disclaims any warranties of merchantability or fitness for a particular purpose and disclaims all responsibility for consequential and incidental damages or any other losses arising from the use of these products or parts.

### Care & Cleaning

#### Care & Cleaning

Keep system free of dirt and moisture. Store in a cool, dry place. Make sure vehicle is completely cool before maintenance.

**Stainless Header System:** Polished stainless steel pipes will turn a light golden hue after a few heat cycles, this is a normal characteristic of high quality stainless steel. Clean using a mild water based spray cleaner. Always apply cleaner or polish with a soft, clean cloth.

**Titanium Header System:** Polished titanium pipes will experience color shift ranging from deep blue/purple through amber after a few heat cycles. This is a normal characteristic of high quality titanium. Clean using a mild water based spray cleaner. Always apply cleaner or polish with a soft, clean cloth.

**Polished Aluminum Canisters:** Use an aluminum or mag wheel polish to restore the bright finish to factory spec.

**Brushed Aluminum Canisters:** Clean using a mild water based spray cleaner. Always apply cleaner or polish with a soft, clean cloth.

**Carbon Fiber Canisters:** Clean using a mild water based spray cleaner. Always apply cleaner or polish with a soft, clean cloth. Always make sure the fiberglass packing inside is in good condition and not burned out, as exhaust heat inside an empty canister will deteriorate the carbon fiber sleeve. TBR sells repack kits (Road - #005-10038, Offroad - #005-10038MX) that include everything you need to easily do it yourself.

**Titanium Mufflers:** For cleaning use a mild water based spray cleaner. Always apply cleaner or polish with a soft, clean cloth. Always make sure the fiberglass packing inside is in good condition and not burned out, as exhaust heat inside an empty canister will deteriorate the carbon fiber sleeve. TBR sells repack kits (Road - #005-10038, Offroad - #005-10038MX) that include everything you need to easily do it yourself.

Repack all road canisters every 3,000 miles. Part #005-10038

Repack all offroad canisters after every 10 hours of use. Part #005-10038MX

NEVER dyno test your bike with carbon fiber or titanium canisters installed - the intense heat and lack of cooling air can quickly burn through the canister material. Two Brothers Racing does not provide a warranty for burned canisters.



Qty.	Description	Part Number
1	S1R Muffler Canister	Varies
1	Stainless Steel Slip-On Tube	005-14201S
1	Muffler Clamp	005-2C-S1H
1	HARDWARE KIT	005-142-3
2	45mm Springs	005-S45
1	P1 Power Tip™ (Installed)	005-P1
1	8x16mm Flange Bolt	005-FB816
1	8x35mm Flange Bolt	005-FB835
2	8mm Flange Nut	005-FN8
1	Support Bracket	005-142-19
1	Barrel Clamp	005-27-59MSH
1	Spring Puller	005-SP