

Maverick Install Instructions

“Read Instructions before install!”

For ICE and Hybrid

Remove glide from the box and disassemble frames. Remove the top frame by opening the unit half way. Reach underneath the unit and hold the stopper flaps up while another person turns the latch handle and pulls the frame all the way out.

Remove the Mid frame by holding the stopper flaps up and sliding all the way out.

Place the bottom frame into the bed of your Ford Maverick and place all the way against the cab wall. Spacing off the cab wall should be 0-1/4” Center the frame between the wheel wells.



TAKE CAUTION DURING THIS STEP. Using a 5/16" drill bit with a depth collar drill the 2 mounting holes in the cab end feet. **The fuel tank is very close to the underside of the bed at the cab end mounting points.** Drill the 2 mounting holes on the mid cross member and the 2 at the tailgate end centered in the rib.. Slide the frame towards the tailgate 6" to expose the 6 holes you just drilled. Drill out the 6 holes to a diameter of 1/2" again utilizing a drill bit depth collar. The tank is about 1" below the bed floor so set your collar at 1/2" from tip of bit to be safe.



Now that you have all 6 mounting holes drilled Install the Plus nuts into the 6 holes using the install tool provided. Replace the bottom frame over the installed Plus nuts and bolt down using the supplied Hardware. Be cautious of using too long of a bolt at the cab end. Verify that bolts are not touching the fuel tank.

Reassemble the unit in the reverse order of disassembly.

Hardware list

6 plus nuts

1 plus nut tool

6 5/16 lock washers

6 5/16 bolts 1 1/2" - 2"

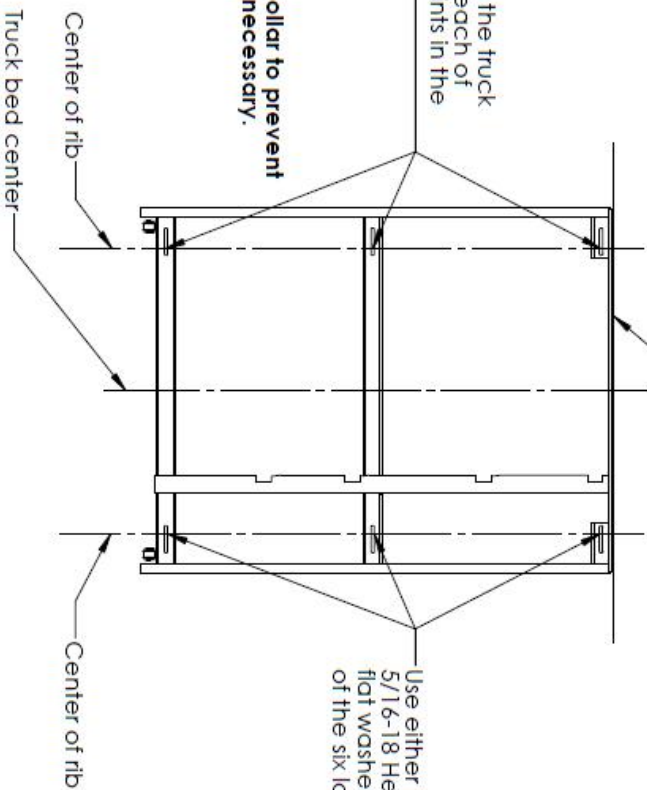
2

1

Place bottom frame 0-1/4" away from back (cab end) of bed.

Center the frame in the truck bed. Mark and drill each of the six mounting points in the center of the ribs.

NOTE: Use a depth collar to prevent drilling deeper than necessary.



Use either 1 1/2" or 2" 5/16-18 Hex bolt with a 5/16" flat washer at each of the six locations.

- Hardware List**
- 1 - PlusNut install tool
 - 6 - PlusNuts
 - 6 - 5/16-18x1 1/2" or 2" Hex Bolts
 - 6 - 5/16 Flat Washers

<p>PROPRIETARY AND CONFIDENTIAL</p> <p>THE INFORMATION CONTAINED IN THIS DRAWING IS THE SOLE PROPERTY OF CARGOCIDE. ANY REPRODUCTION IN PART OR AS A WHOLE WITHOUT THE WRITTEN PERMISSION OF CARGOCIDE IS PROHIBITED.</p>		DRAWN		DATE	
		CHECKED		DATE	
DIMENSIONS ARE IN INCHES		TOLERANCES:		FINISH	
FRACTIONS: 1/16"		DECIMALS: 0.005		HOLE FINISH	
THIRD PLACE DECIMAL: 4.01		THREE PLACE DECIMAL: 4.005		MATERIAL	
NEXT ASSY		USED ON		APPLICATION	
DO NOT SCALE DRAWING		COMMENTS		SCALE: 1/16" = 1"	
<p>DECKED</p> <p>CG1000XL-5241, Maverick Install Instructions</p>		<p>DMG. NO. _____</p> <p>REV. _____</p>		<p>SHEET 1 OF 1</p>	

2

1