

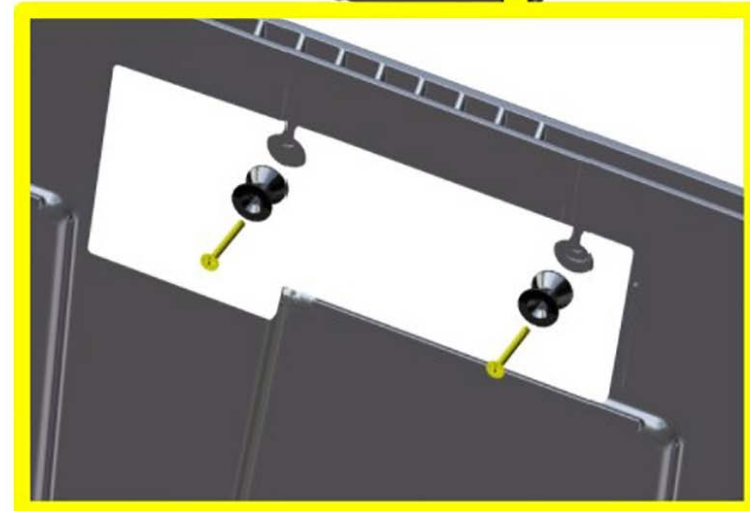
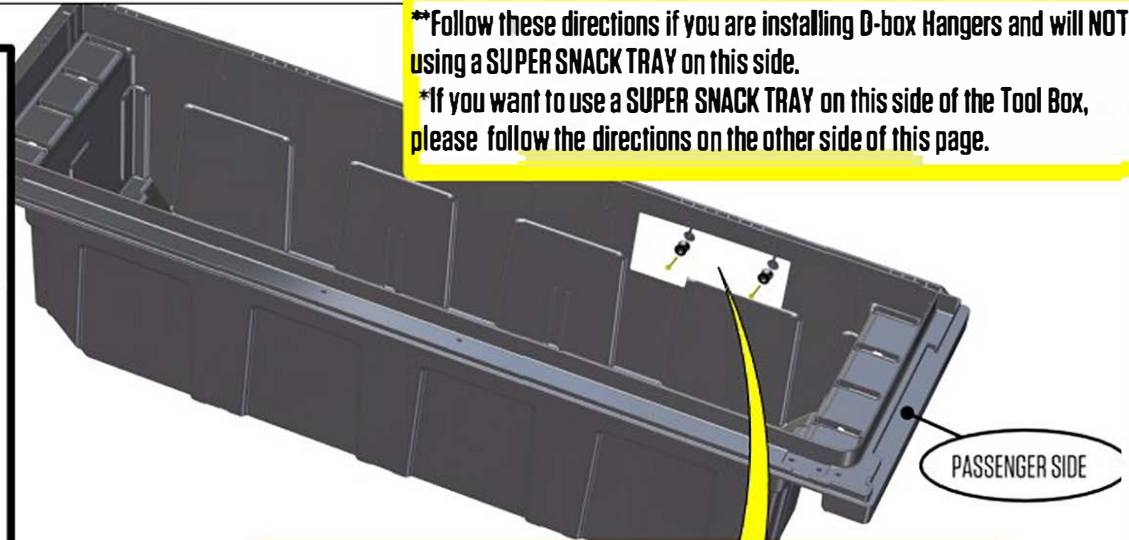


## D-BOX HANGER INSTALLATION - INSTALLING HANGERS\*\*

1. Place and adhere the D-BOX HANGER TEMPLATE on the cabside of the tub with the bottom tab placed as shown.
2. Place a D-BOX HANGER in the placement hole with the countersunk side facing out.
3. Using a 5/32" drill bit and the hanger as a guide, drill a pilot hole through the tub and aluminum spanner. Repeat for other hole. Remove template.
4. Place the hanger over the pilot hole (countersunk side facing out) and use a #3 Phillips bit to drill the screw through the hanger and into the tub and spanner.
5. Repeat for other hanger.
6. Transfer the template to the tailgate side of the tub and repeat the procedure.
7. We've shown the installation on the passenger side of the tub. Flip the template for driver's side assembly if you will NOT be using a Super Snack Tray.
8. Questions? Call us at 208-806-0251

\*\*Follow these directions if you are installing D-box Hangers and will NOT be using a SUPER SNACK TRAY on this side.

\*If you want to use a SUPER SNACK TRAY on this side of the Tool Box, please follow the directions on the other side of this page.



**FOLLOW THESE DIRECTIONS IF YOU WILL NOT BE USING A SUPER SNACK TRAY**

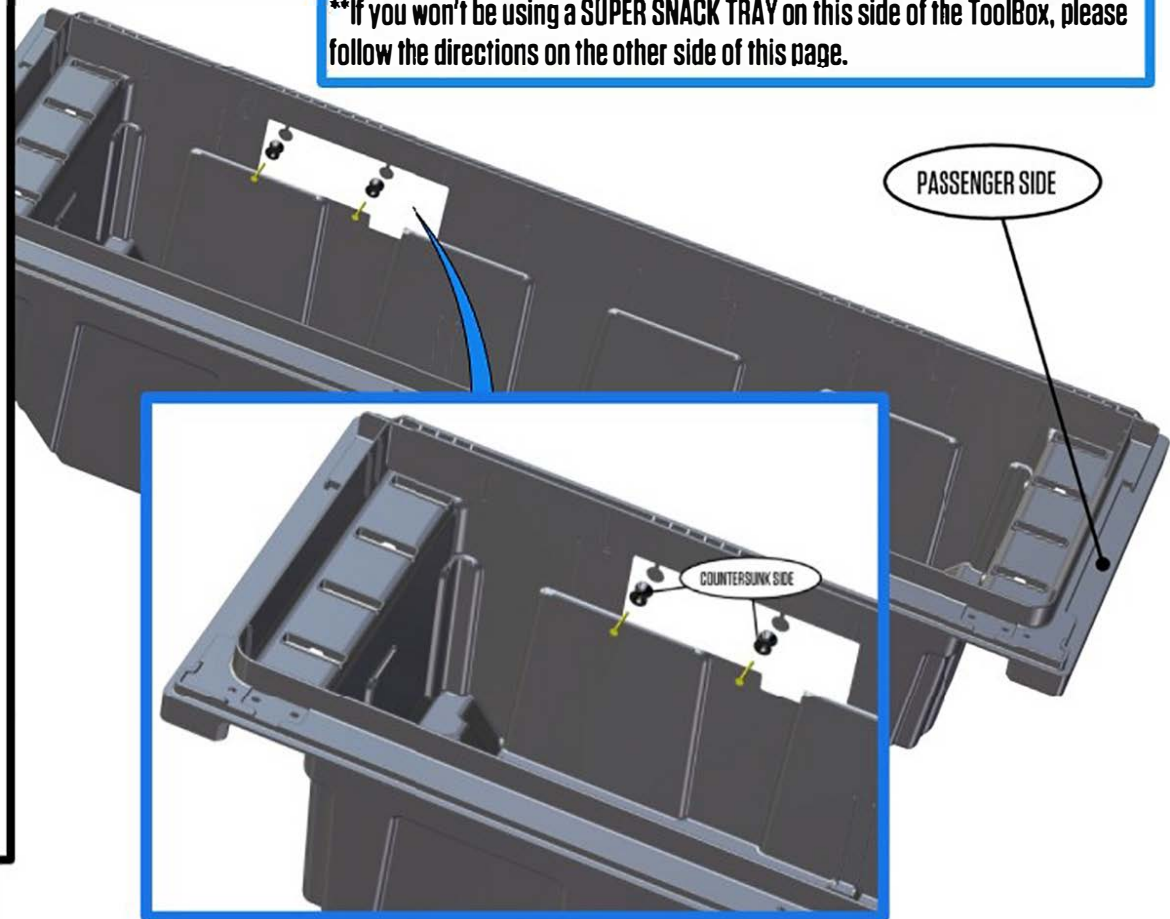


## D-BOX HANGER INSTALLATION - INSTALLING HANGERS to be used with the SUPER SNACK TRAY\*\*

1. If you have existing D-box hangers and you want to use a Super Snack Tray on that side, you'll have to remove and reposition them. Remove the existing Dbox hangers by removing the mounting screws with a #3 Phillips bit or screwdriver.
2. Remove perforated area from template. Place and adhere the D-BOX HANGER TEMPLATE to the tub with the bottom tab placed as shown.
3. Place a D-BOX HANGER in the placement hole with the countersunk side facing out.
4. Using a 5/32" drill bit and the hanger as a guide, drill a pilot hole through the tub and aluminum spanner. Repeat for other hole. Remove template.
5. Place the hanger over the pilot hole (countersunk side facing out) and use a #3 Phillips bit to drill the screw through the hanger and into the tub and spanner.
6. Repeat for other hanger.
7. Transfer the template to the tailgate side of the tub and repeat the procedure.
8. Questions? Call us at 208-806-0251

\*\*Follow these directions if you are installing D-box Hangers and will be using a SUPER SNACK TRAY on this side.

\*\*If you won't be using a SUPER SNACK TRAY on this side of the ToolBox, please follow the directions on the other side of this page.



***FOLLOW THESE DIRECTIONS IF YOU WILL BE USING A SUPER SNACK TRAY***