



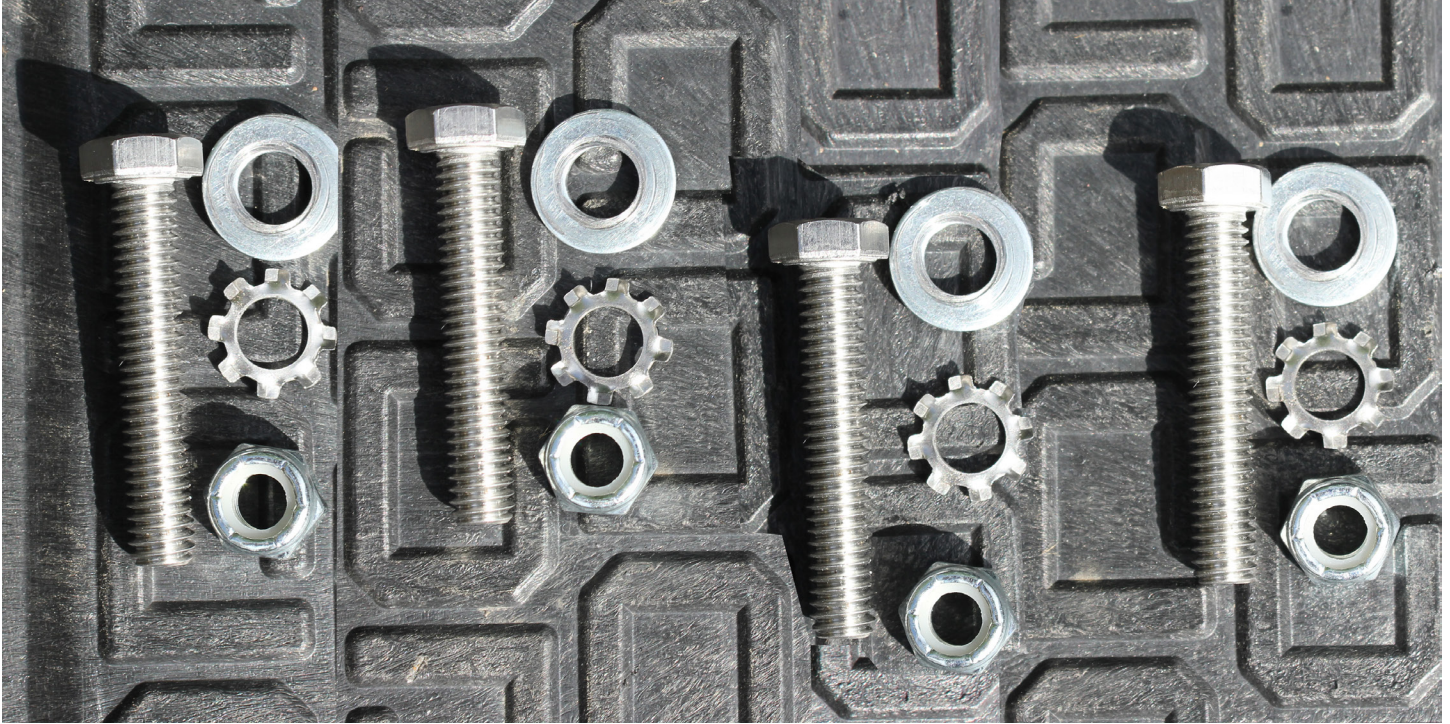
SUGGESTED SLIDE INSTALLATION PROCEDURE

DECKED is providing these instructions as a courtesy to its customers. While DECKED has attempted to ensure that these instructions are accurate and complete, DECKED makes no warranty whatsoever, express or implied, and expressly disclaims any implied warranty of merchantability or fitness for a particular purpose, regarding these instructions, any non-DECKED product referenced in them, or the integration of a non-DECKED product with the DECKED system. Modifying a DECKED system may void the applicable warranty. DECKED disclaims any liability related to these instructions. All installations are made at the installer's sole risk.

WWW.DECKED.COM

HARDWARE NEEDED:

- 2 – 1 ¾" x 5/16" #18 bolts
- 2 – 2" x 5/16" #18 bolts
- 4 – 5/16" lock washers
- 4 – Standard washers



STEP 1

Place frame on DECKED system. Determine if your slide frame's cross brace (the steel strap mid-frame) mounting holes align with the locations of the steel tubes in the DECKED system. (The location of the steel tubes in the deck halves are indicated by a series of dimples).

STEP 2

If these holes do not align precisely on center with the DECKED steel tube you will need to either re-drill your underframe's cross braces or weld on another cross brace. Use same thickness steel as manufacturer's (shown is ¼" thick x 2" wide). We spray-painted this for rust prevention.



STEP 3

Locate most cab side steel tube and mark center line.

Dimples indicate location of steel tubes.



STEP 4

Center the slide's cab-side bottom frame holes on this line: front to back and left to right.



STEP 5

With cab side underframe holes centered drill cab side pilot holes with a 1/16" bit.



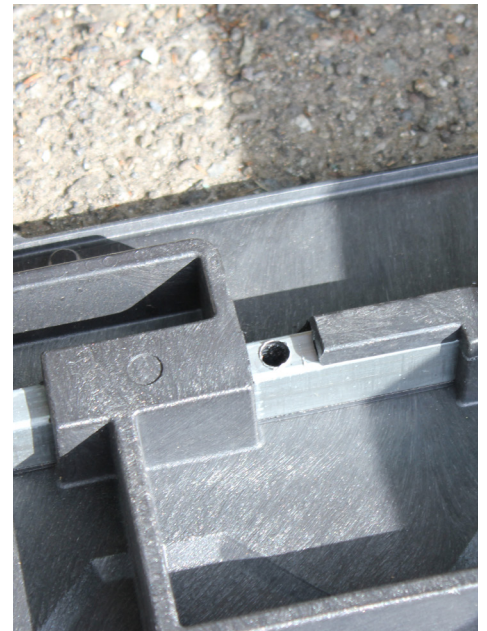
STEP 6

Check to make sure pilot holes are centered on steel tube. If centered, drill to size with a 5/16" bit.



STEP 7

Remove HDPE plastic from around pilot hole with a hammer and chisel.



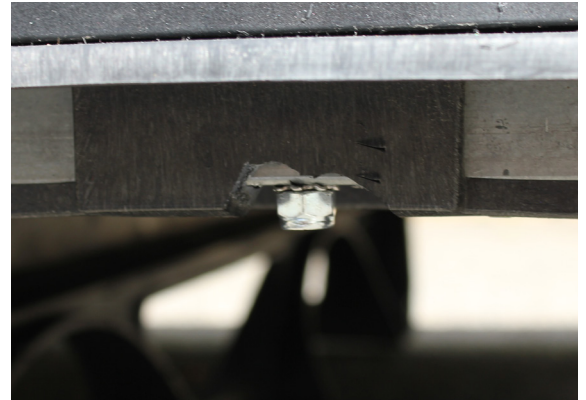
STEP 8

Mount the cabside end of the bottom frame to deck with 1 3/4" x 5/16" #18 bolts.



STEP 9

Get your skinniest friend to crawl inside drawer cavity with a 1/2" socket and nut/washer and hold on while guy on top tightens bolt.



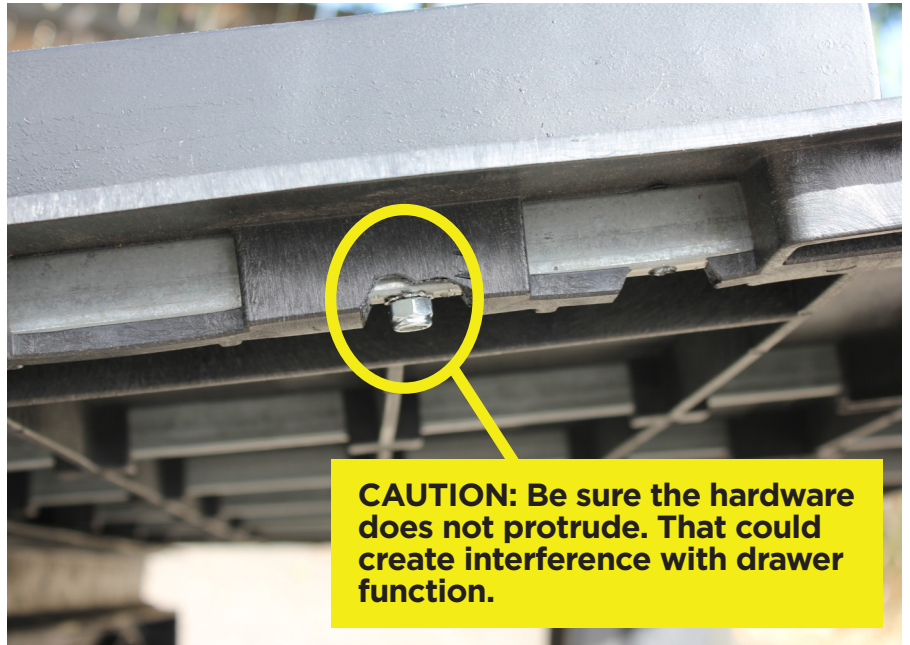
STEP 10

Once cab side is mounted, repeat process with tailgate end, but use 2" 5/16" #18 bolts.



STEP 11

Attach the cross brace tailgate end to deck with 2" x 5/16" #18 bolts.



STEP 12

Once frame is attached, install your tray.

***CargoGlide SKU's believed compatible with the DECKED system:**

5 1/2' DECKED Systems take CargoGlide CG1000-DM6348

6 1/2' DECKED Systems take CargoGlide CG1000-DM7348

*It is important to note that we are separate companies and not responsible for integration and harmony with other products. Please contact CargoGlide directly for confirmation on product compatibility, specs and model numbers.

WARNING: Adding slides or making any other modifications to the DECKED system may put you or others at risk of bodily harm. Although we believe that this installation technique is valid, we do not guarantee that any slides or installation techniques will work satisfactorily in all cases. Additionally, installation procedures may vary by slide model, and these instructions are intended only to provide general guidelines rather than a comprehensive set of installation instructions for all models of slides. Installing slides on, or making any other modifications to, DECKED systems is entirely at the risk of the installer. We do not recommend using any slide with a capacity >1000 lbs. (or overloading a lower rated slide).

WWW.DECKED.COM