

# INSTALLATION INSTRUCTIONS:

# BEDSLIDE

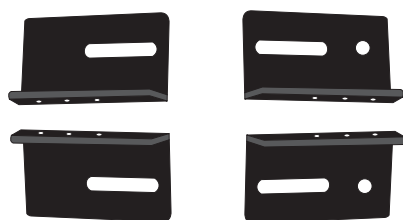


# DECKED



## KIT CONTAINS:

### [4] BRACKETS:



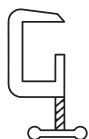
### HARDWARE KIT:

- [4] DECKED x BEDSLIDE BOLT
- [4] FLANGED NUT
- [8] NON-FLANGED NUT
- [4] RUBBER WASHER
- [12] WASHER



**NOTE: ENSURE THE DECKED SURFACE IS CLEAN AND FREE OF ANY CARGO PRIOR TO INSTALL.**

## TOOLS NEEDED:



CLAMPS



CHISEL



1/2" WRENCH



DRILL



3/32"  
DRILL BIT



5/16"  
DRILL BIT

**NOTE: READ INSTRUCTIONS COMPLETELY BEFORE ATTEMPTING INSTALL.**

# STEP 1

## ASSEMBLE DECKED SYSTEM ON GROUND

Connect both panels to center vert. No drawers.



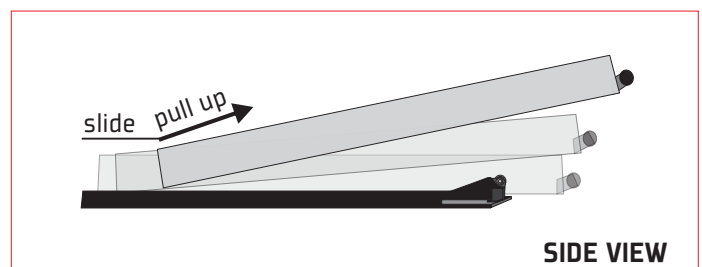
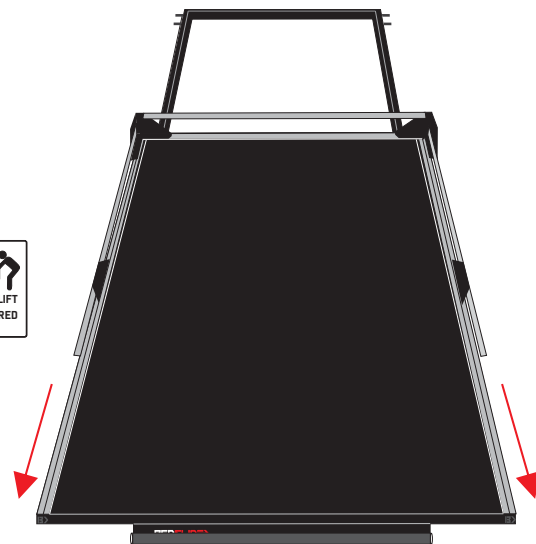
↑  
CAB

TAILGATE  
↓

# STEP 2

## REMOVE BEDSLIDE TOP FROM BASE FRAME

Fully extend the BEDSLIDE and remove the top slider by lifting up and out. The welded safety stops must go up and over the rear roller bearings and spacer guides in order for the top slider to release.



SIDE VIEW

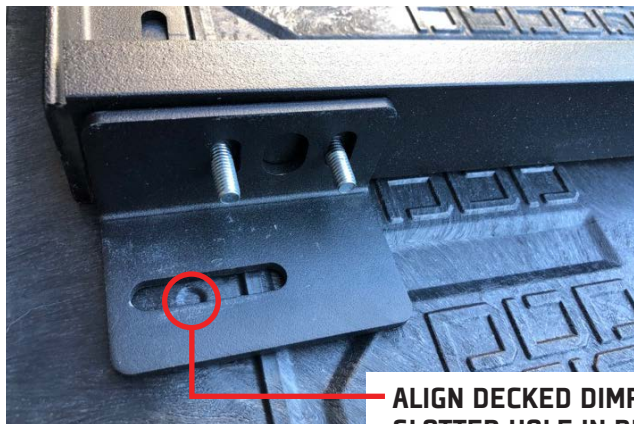
# STEP 3

## SET BEDSLIDE BASE FRAME IN PLACE ON DECK

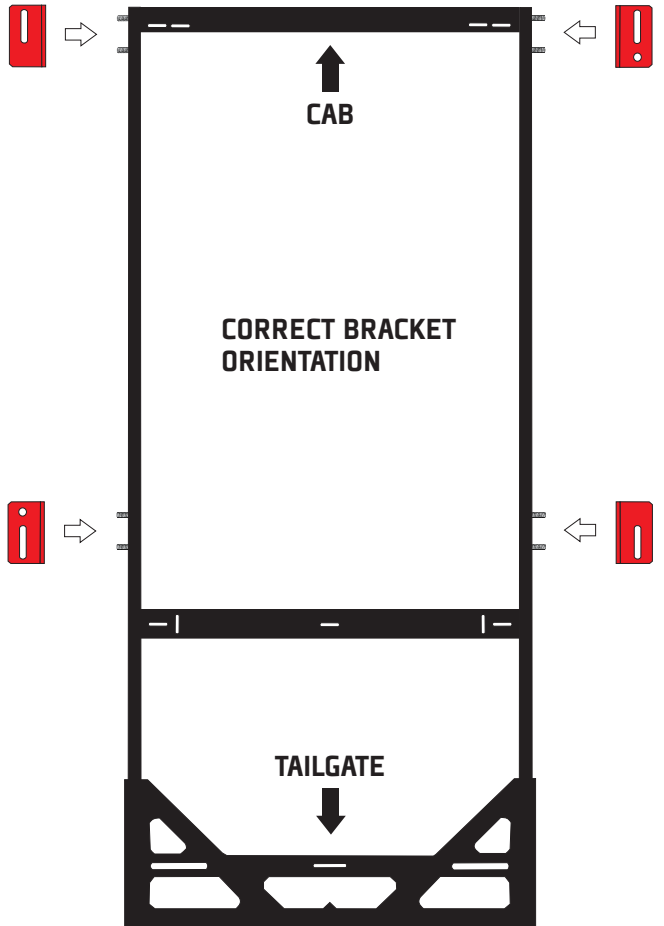
- Roller wheels on BEDSLIDE base frame go on tailgate end of DECKED. Center left-right. Align front-back.
- Test fit all brackets on pre-installed BEDSLIDE base frame bolts as shown. Use the slotted holes on brackets to align with dimples on deck panel [dimples show the location of the steel tubes on the underside of the deck panels]. Leave brackets in place.
- Once correct frame position is located, clamp frame in place.



ROLLER WHEELS  
[TAILGATE END]



ALIGN DECKED DIMPLE WITH  
SLOTTED HOLE IN BRACKET



## STEP 4

### DRILL PILOT HOLES

With brackets still in place [not attached] drill pilot holes with 3/32" drill bit through center of dimple on deck panel. Make sure to drill through both top and bottom of DECKED steel tubes. Repeat all [4] brackets.

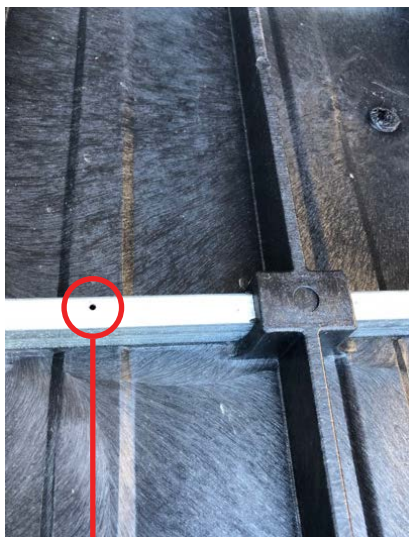


3/32" DRILL BIT

## STEP 5

### REMOVE BEDSLIDE AND SEPARATE DECK PANELS

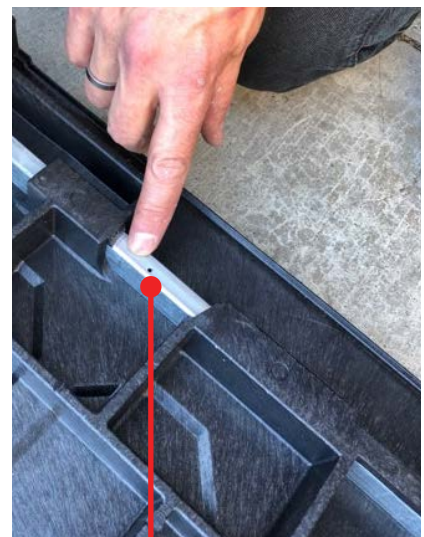
- Remove BEDSLIDE base frame.
- Un-bolt one deck panel from center vert [leave other deck panel connected to center vert].
- Flip panels over. Locate pilot holes. With a chisel or saw, remove HDPE plastic from pilot holes at the tailgate end. Don't worry, this will not affect your DECKED system's integrity.



PILOT HOLE



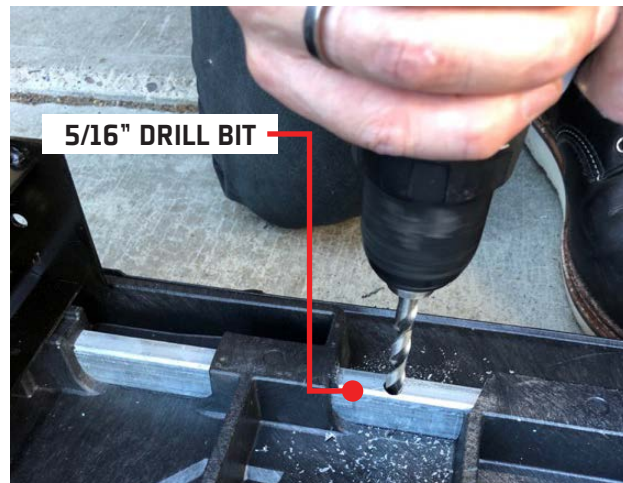
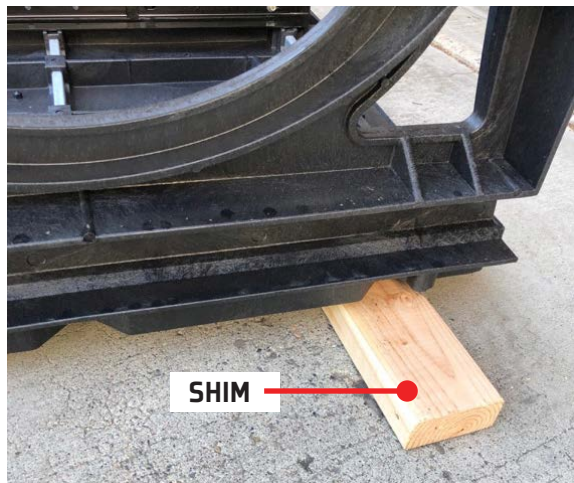
CHISEL PLASTIC FROM  
TAILGATE END PILOT HOLES



## STEP 6

### DRILL CAREFULLY

- Elevate deck panels off the ground with a shim to avoid damaging drill bit.
- Carefully drill [4] thru-holes using a 5/16" drill bit.



## STEP 7

### ATTACH DECKED x BEDSLIDE BOLTS

- Pass DECKED x BEDSLIDE bolts through holes. The welded tab of the bolt grabs the metal tube as shown.
- Secure each as you go with rubber washer [rubber side against DECKED panel to prevent bolt from slipping out].



DECKED x BEDSLIDE BOLT



RUBBER WASHER [RUBBER SIDE AGAINST DECK PANEL]



CORRECT PLACEMENT

## STEP 8



### PLACE DECKED SYSTEM IN TRUCK BED OR VAN

- With all [4] bolts and washers in place, position DECKED system into bed of truck or van. Do not tighten DECKED to bed tie downs yet.
- Place bracket onto exposed bolt head and rubber washer. Loosely attach with washer and flanged nut. Repeat all [4] brackets.



RUBBER WASHER



WASHER +  
FLANGED NUT

## STEP 9

### INSTALL BEDSLIDE BASE FRAME x DECKED

- Place BEDSLIDE base frame into correct position in bed.
- Attach each bracket to BEDSLIDE base frame pre-installed bolts with [2] washers and [2] non-flanged nuts. Keep loose. Repeat all [4] brackets. Now tighten.
- Position BEDSLIDE base frame in desired location on DECKED and tighten flanged nuts connecting brackets to deck panel. Make sure frame rests snugly against DECKED. You may need to stand on frame to get it to tighten entirely to deck panel.



WASHER +  
NON-FLANGED NUT

## STEP 10

### COMPLETE DECKED SYSTEM INSTALL

Following the instructions that came with your DECKED system, install the drawers, J-Hooks, torsion brace [if you have one] and complete DECKED install.

## STEP 11

### REINSTALL BEDSLIDE TOP FRAME

Reinstall the BEDSLIDE top frame into the base frame by placing top frame over the rear bearings and sliding the frame forward to the stowed position. Follow instructions that came with your BEDSLIDE.



**WARNING:** adding a BEDSLIDE or making any modifications to the DECKED system may put you or others at risk of bodily harm. Although this installation technique is valid, we do not guarantee that any slide or installation techniques will work in all applications. Installation procedures will vary between models. Installing slides on or making any modifications to the DECKED system is entirely at the risk of the installer. We do not recommend using a slide with a weight capacity greater than 1,000 lbs. Modifying a DECKED system may void the applicable warranty.