

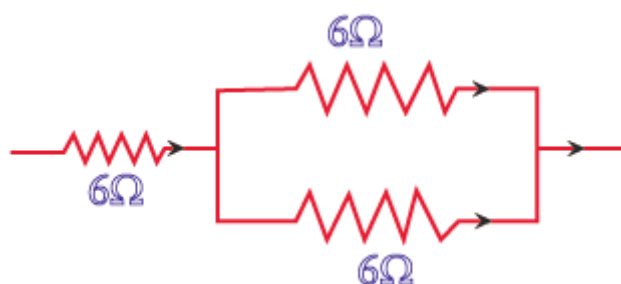
Science Worksheet Class – 10

Physics

1. An object is kept at a distance more than twice the focal length (F) from a concave mirror. The distance of the image that will be formed is

- (a) Less than F
- (b) Equal to F
- (c) Between F and $2F$
- (d) More than $2F$

2. Three resistors are shown in the figure. The resistance of the combination is



- (a) 3Ω
- (b) 6Ω
- (c) 4Ω
- (d) 9Ω

3. The figure shows the magnetic field lines between the two faces A and B of two magnets. Which of the options below is true?



- a) Both faces A and B of two bar magnets are the North Pole

(b) Both faces A and B of two bar magnets are the South Pole

(c) Face A is South Pole while face B is the North Pole

(d) None of the above

Chemistry

4. Write the balanced reactions for the following

(i) Potassium Bromide (aq) + Barium iodide (aq) \rightarrow Potassium iodide (aq) + Barium bromide (aq)

(ii) Zinc carbonate (s) \rightarrow Zinc oxide (s) + Carbon dioxide (g)

(iii) Hydrogen (g) + chlorine (g) \rightarrow Hydrogen chloride

5. (a) Arrange the following metals in decreasing order of their reactivity. Cu, Ca, Mg, Na, Zn

(b) You are provided with three metals: sodium, magnesium, and copper. Using only water as the reactant how will you identify each of them?

(c) Which metal listed in (a) is most likely to occur in the native state.

6. An example of soap is

(a) $\text{C}_{15}\text{H}_{31}\text{COONa}$

(b) CH_3COONa

(c) $\text{C}_6\text{H}_5\text{COONa}$

(d) $\text{C}_{17}\text{H}_{35}\text{OSO}_3\text{Na}$

7. The Table is a part of the periodic table. Use this table and explain why

H							He
Li	Be	B	C	N	O	F	Ne
Na	Mg	Al	Si	P	S	Cl	Ar

(a) Li and Na are considered as active metals

(b) Atomic size of Mg is less than Na

(c) Fluorine is more reactive than chlorine

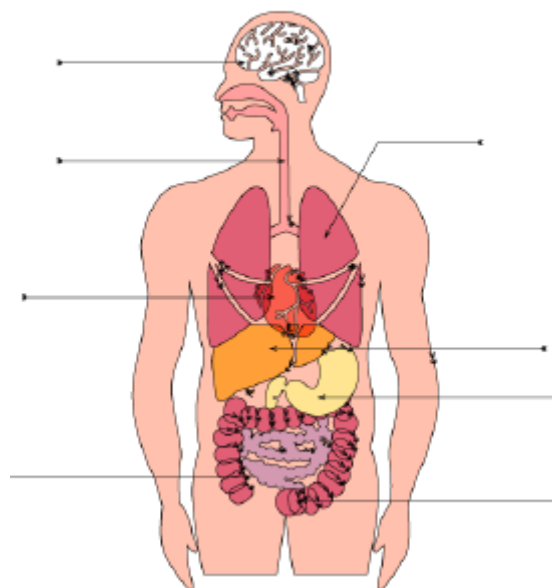
Biology

8. In which of the following group/ groups of animals, the heart does not pump oxygenated blood to different parts of the body?

- (a) Pisces only
- (b) Amphibians only
- (c) Amphibians and reptiles only
- (d) Pisces and amphibians

9. Label the parts of the human digestive system.

Human Digestive System



Describe the role of the following secretion in digestion.

- (a) Bile

(b) Salivary amylase

(c) HCl

10. The process by which blood is cleared of metabolic wastes in case of kidney failure is called

- (a) Artificial kidney
- (b) Dialysis
- (c) Transplantation
- (d) Filtration