

MATHEMATICS

Time allowed: 2 hours

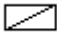
Maximum Marks: 75

All questions are compulsory

A) Fill in the blanks.

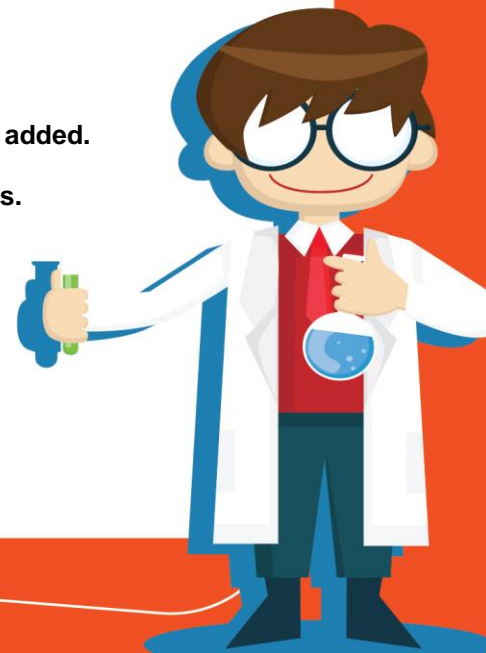
1 x

10

- 1) $1\frac{1}{2}$ of a right angle is _____°.
- 2) Length of the boundary of a shape is called as _____.
- 3) Two – fifth of 100 is _____.
- 4) Write a letter from English alphabet which looks the same after half a turn.
- 5) The factors of 8 are _____.
- 6) The next number in the pattern 6, 9, 12 is _____.
- 7) Chennai is in the direction of _____ from Delhi.
- 8) All the faces in a cube are _____.
- 9) 20.4 cm is same as _____ cm and _____ mm.
- 10) The USA currency of dollar is almost equal to _____ rupees.
- 11) The length and width of a card is 10 cm and 8 cm. The area of the card is _____.
- 12) The common unit to measure the area of a floor is _____.
- 13) A tally mark in the shape  represents the number _____.
- 14) 45×21 is easily multiplied in two steps as _____ + _____ and added.
- 15) In a day you eat 100g of rice. Then 500g of rice is sufficient for _____ days.

B) Short questions.

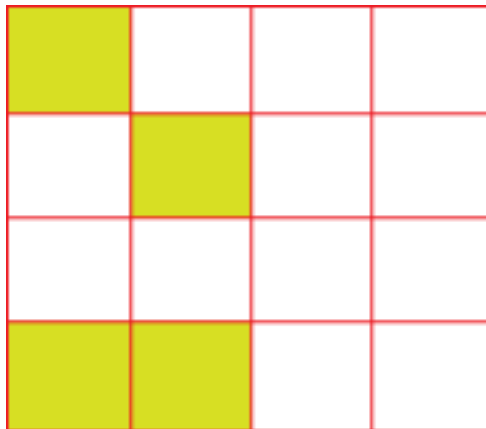
2 x 10



1) In a clock, when you see 3 o'clock, what is angle between the two hands of the clock?

2) Draw a square and draw four triangles inside that.

3)



What part of the whole grid is shaded?

4) Draw a bold letter A and draw a dotted line which can make the letter into two mirror halves.

5) Write first five multiples of 4.

6)



By observing the patterns above, write the rule of the patter. Also draw the next shape in the pattern.

7) A map is drawn with a scale 1 cm = 500 km. If two cities are shown 3 cm apart in the map, what is the actual distance between those cities?

8) Write the decimals in ascending order.

3.12, 3.07, 3.16, 3.09, 3.17, 3.55

9) Shyam noticed 54 cycles passing through a road junction in one hour time.

How he would record this number in his data collection in the form of tally marks?



10) A packet milk of half liter is priced at 20 rupees. Gopal sells 12 liters a day. How many packets he sold every day and how much he earned every day?

C) Long questions.

4 x 1\

SUNDAY

In the above word,

i) Count the total number of angles in all the letters of the above word.

ii) List how many are right angles, less than right angles and more than right angles.

2) Draw a rectangle of length 5 cm and width 4 cm. Draw a triangle inside the rectangle such that the area of the triangle is 10 square cm.

3) Poonam had 12 marble. She gave one – third to David, one – fourth to Rahim, one – sixth to Ramu and she kept the remaining marbles with her. How many marbles did each get? What part of total marbles left with Poonam?

4) Write five four digit numbers which would look same on half a turn.

5) You have 18 cakes. In how many ways you can pack them into different boxes containing equal numbers in each and no cake is left out?

6) Complete the magic square shown below, using all the numbers from 46 to 54.

53	48	
		54
51		



Rule: The total of each side and of each diagonal is 150.

7) A wire 30 of centimeter long is formed into a rectangle. If the width of this rectangle is 6 centimeter, what is the area of the rectangle?

8) Find the lowest common multiple of the numbers 3, 7 and 8

9) 639 fruits were delivered to a shop in a crate. The fruits have to be packed in card board boxes and each box can hold only 13 fruits. Minimum how many boxes are needed to pack all the fruits?

10) An elephant weighs 5000 kg and a blue whale weight 35 times an elephant. What is the weight of the blue whale?

