



CIRCUIT PROTECTION - 2020

Circuit Breakers 2

Diodes 4

Blade Fuses 5

Glass Fuses 8

Bolt Down Fuses 10

Cartridge Fuses 11

Fuse Holders 13

Fuse Blocks 16

Power Distribution Modules 18



Circuit Breakers

Short Stop Circuit Breakers

Automatic or Manual Reset

121 Series - Automatic Reset



- Thermoplastic Body • Voltage: Up to 14VDC • Interrupt Rating: 2.5kA @ 12VDC
- Operating Temp: -40°C to 85°C • IP Rating: IP66 (Plastic Only) • 10/32 (5mm) studs
- Bracket mounting holes: 5mmØ x 40mm spacing • Dimensions: L51mm x W20mm x H35mm

Amp	10	15	20	25	30	40	50
Part #	CB10B	CB15B	CB20B	CB25B	CB30B	CB40B	CB50B

123 Series - Manual Reset



- Thermoplastic Body • Voltage: 12 - 28VDC • Interrupt Rating: 2.5kA @ 12VDC
- Operating Temp: -40°C to 85°C • IP Rating: IP66 (Plastic Only) • 10/32 (5mm) studs
- Bracket mounting holes: 5mmØ x 40mm spacing • Dimensions: L51mm x W20mm x H35mm

Amp	10	15	20	25	30	40	50
Part #	CB10BMR	CB15BMR	CB20BMR	CB25BMR	CB30BMR	CB40BMR	CB50BMR

Short Stop Insulators



- Protects terminals from accidental shorts • Constructed from PVC
- Max operating temp 105°C • Cable entry 18-10AWG
- Available in Red or Black

Colour	Black	Red
Part #	CBCB	CBC

Short Stop/Midi Brackets



- Electroplated steel bracket for mounting a combination of short stop circuit breakers and midi fuse holders
- 1 x Short Stop circuit breaker & 1 x MIDIFH single fuse holder or 1 x MIDIFH2 twin fuse holder
- L84.9mm x W72.5mm x H2.0mm * Bracket only - Circuit Breakers, Fuse Holders & Bolts not included

Part #	BKTMIDICB
--------	-----------



Panel Mount Circuit Breakers

Automatic and Manual Reset for use in various auto and marine applications

S55 Series - Manual Reset



- Thermoplastic Body • Voltage: Up to 32VDC or 250VAC • Interrupt Rating: 200A @ 250VAC
- Operating Temp: -40 °C to 85 °C • IP Rating: IP54 • Protective Boot also available
- Panel Mounting hole: 11.5mm Ø • 6.0mm Spade Terminals • Dimensions: L54mm x W35mm x H15mm

Amp	3	10	15	20	25	30	BOOT
Part #	CBR3	CBR10	CBR15	CBR20	CBR25	CBR30	S55BOOT

HI AMP Series - Manual Reset



- Thermoplastic Body • Voltage: Up to 48VDC • Interrupt Rating: 2.5kA @ 14VDC
- Operating Temp: -40 °C to 85 °C • IP Rating: IP67 • M6 stainless steel threaded studs
- Bracket mounting holes: 6.7mmØ x 61.2mm spacing • Dimensions: L73.8mm x W48.1mm x H47.6mm

Amp	50	60	80
Part #	CB50HDRP	CB60HDRP	CB80HDRP

Surface Mount

Automatic and Manual Reset for use in various auto and marine applications

HI AMP Series - Automatic Reset



- Thermoplastic Body • Voltage: Up to 30VDC • Interrupt Rating: 3kA @ 30VDC
- Operating Temp: -40 °C to 85 °C • IP Rating: IP67 • M6 stainless steel threaded studs
- Bracket mounting holes: 6.6mmØ x 56.64/26.67mm spacing • Dimensions: L74mm x W48mm x H28mm

Amp	60	80	100	120
Part #	CB60HD	CB80HD	CB100HD	CB120HD

HI AMP Series - Manual Reset



- Thermoplastic Body • Voltage: Up to 48VDC • Interrupt Rating: 3kA @ 48VDC
- Operating Temp: -40 °C to 85 °C • IP Rating: IP67 • M6 stainless steel threaded studs
- Bracket mounting holes: 6.6mmØ x 57/27mm spacing • Dimensions: L74mm x W48mm x H37mm

Amp	50	60	80	100	120	150
Part #	CB50HDR	CB60HDR	CB80HDR	CB100HDR	CB100HDR	CB150HDR

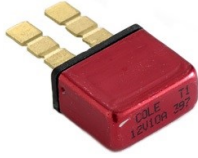


Circuit Breakers & Diodes

Fuse Mount

Various fuse replacement circuit breakers

AF Standard Auto Blade - Automatic Reset



- Plated Steel Body •Voltage: Up to 12VDC •Operating Temp: -40°C to 85°C
- Cycles or continuously resets until overload is corrected •Cut off grooves for adjusting length of terminals
- 5.2mm Spade Terminals •Dimensions: D10mm x W21mm x H38mm

Amp	10 (Red)	15 (Blue)	20 (Yellow)	25 (Silver)	30 (Green)
Part #	CBAF10	CBAF15	CBAF20	CBAF25	CBAF30

AF Standard Auto Blade - Manual Reset



- Thermoplastic Body •Voltage: Up to 28VDC •Interrupt Rating: 2000A @ 28VDC
- Operating Temp: -40°C to 85°C •Cover is colour coded to amp rating
- 5.2mm Tin Plated Spade Terminals •Dimensions: D6.4mm x W19.3mm x H36.5mm

Amp	5 (Tan)	10 (Red)	15 (Blue)	20 (Yellow)	25 (White)	30 (Green)
Part #	CBAFMR5	CBAFMR10	CBAFMR15	CBAFMR20	CBAFMR25	CBAFMR30

AFN Mini Blade - Automatic Reset



- Thermoplastic Body •Voltage: Up to 14VDC •Interrupt Rating: From 150A - 450A @ 14VDC
- Operating Temp: -40°C to 85°C •2.8mm Q.C. Terminals •Dimensions: D6.4mm x W12.5mm x H36mm

Amp	10	15	20	30
Part #	CBAFN10	CBAFN15	CBAFN20	CBAFN30

Diodes

Multiple Configurations

Standard Diodes & Diode Connectors

- Low leakage current
- High surge capability
- Thermoplastic "T" connector*
- Operating Temp: -65°C to 150°C*
- Spade terminals 6.3mm*



Amp/VDC	1/400	3/1000	6/120	1/600 or 3/600
Part #	IN4007	IN5408	PG600	Y7321-1 or Y7321
Pack Qty	25	25	10	1



Blade Fuses

Low Voltage Blade Fuses for Automotive use

Blade fuses can be hand inserted into a fuse holder. These fuses provide protection for several amperage ratings up to 100A. They are well suited to protect smaller to medium diameter wires that are usually some distance from the battery. Remember to place the fuse holder as close to the battery and as far away from the load as possible, so that it protects the wire from a short anywhere along its length. Any short between the power source and the fuse is not protected.

Blade fuses include: ATO® (AF) - MAXI (AFX) - MINI® (AFN) - LP MINI® (AFNLP) - MICRO2® (AFM) - MICRO3® (AFMT).

Standard AF Series - Littelfuse® Fast Acting

Pack Qty: 5



- Thermoplastic PA66 Body • Voltage: Up to 32VDC • Interrupt Rating: 1000A @ 32VDC
- Operating Temp: -40°C to 85°C • Cover is colour coded to amp rating
- 5.2mm Tin Plated Spade Terminals • Dimensions: D5.1mm x W19.1mm x H18.7mm

Amp	1	2	3	4	5	7.5	10	15	20	25	30	35	40
Part #	AF1	AF2	AF3	AF4	AF5	AF7.5	AF10	AF15	AF20	AF25	AF30	AF35	AF40

Standard Blade Fuse Assortment Kit

The 10 compartment transparent case contains 46 pieces of the most popular AF Standard Blade fuses.

Part #: **AFK**



AF3 x 5	AF5 x 5	AF7.5 x 5	AF10 x 5	AF15 x 5
AF20 x 5	AF25 x 5	AF30 x 5	AF40 x 5	AFPT0 x 1

Maxi AFX Series - Littelfuse® Slow Acting

Pack Qty: 5



- Thermoplastic PA66 Body • Voltage: Up to 32VDC • Interrupt Rating: 1000A @ 32VDC
- Operating Temp: -40°C to 85°C • Cover is colour coded to amp rating • * MTA Brand
- 6.8mm Tin Plated Spade Terminals • Dimensions: D8.9mm x W29.2mm x H34.3mm

Amp	20	30	40	50	60	70*	80	100*
Part #	AFX20	AFX30	AFX40	AFX50	AFX60	AFX70	AFX80	AFX100



Blade Fuses

Low Voltage Blade Fuses for Automotive use

Mini AFN Series - Littelfuse® Fast Acting

Pack Qty: 5



- Thermoplastic PA66 Body • Voltage: Up to 32VDC • Interrupt Rating: 1000A @ 32VDC
- Operating Temp: -40°C to 85°C • Cover is colour coded to amp rating
- 2.7mm Tin Plated Spade Terminals • Dimensions: D3.8mm x W10.9mm x H16.3mm

Amp	2	3	5	7.5	10	15	20	25	30
Part #	AFN2	AFN3	AFN5	AFN7.5	AFN10	AFN15	AFN20	AFN25	AFN30

Mini Blade Fuse Assortment Kit

The 10 compartment transparent case contains 46 pieces of the most popular AFN Mini Blade fuses.

Part #: **AFNK**



AFN2 x 5	AFN3 x 5	AFN5 x 5	AFN7.5 x 5	AFN10 x 5
AFN15 x 5	AFN20 x 5	AFN25 x 5	AFN30 x 5	AFNPT0 x 1

Mini Low Profile AFNLP Series - Pacific® Fast Acting

Pack Qty: 5



- Thermoplastic PA66 Body • Voltage: Up to 58VDC • Interrupt Rating: 1000A @ 58VDC
- Operating Temp: -40°C to 85°C • Cover is colour coded to amp rating
- 3.2mm Tin Plated Spade Terminals • Dimensions: D3.8mm x W10.9mm x H8.73mm

Amp	2	3	5	7.5	10	15	20	25	30
Part #	AFN2LP	AFN3LP	AFN5LP	AFN7.5LP	AFN10LP	AFN15LP	AFN20LP	AFN25LP	AFN30LP

Mini Blade Low Profile Fuse Assortment Kit

The 10 compartment transparent case contains 45 pieces of the most popular AFN Low Profile Mini Blade fuses.

Part #: **AFNLPK**



AFN2LP x 5	AFN3LP x 5	AFN5LP x 5	AFN7.5LP x 5	AFN10LP x 5
AFN15LP x 5	AFN20LP x 5	AFN25LP x 5	AFN30LP x 5	



Blade Fuses

Low Voltage Blade Fuses for Automotive use

Micro2 AFM Series - Littelfuse® Fast Acting

Pack Qty: 5



- Thermoplastic PA66 Body • Voltage: Up to 32VDC • Interrupt Rating: 1000A @ 32VDC
- Operating Temp: -40°C to 105°C • Cover is colour coded to amp rating
- 2.8mm Tin Plated Spade Terminals • Dimensions: D3.8mm x W9.1mm x H15.3mm

Amp	5	7.5	10	15	20	25	30
Part #	AFM5	AFM7.5	AFM10	AFM15	AFM20	AFM25	AFM30

Micro3 Dual Element AFMT Series - Littelfuse® Fast Acting

Pack Qty: 5



- Thermoplastic PA66 Body • Voltage: Up to 32VDC • Interrupt Rating: 1000A @ 32VDC
- Operating Temp: -40°C to 105°C • Cover is colour coded to amp rating
- 2.8mm Tin Plated Spade Terminals • Dimensions: D4.2mm x W14.4mm x H18.0mm

Amp	5	7.5	10	15
Part #	AFMT5	AFMT7.5	AFMT10	AFMT15

Micro Blade Fuse Assortment Kit

The 10 compartment transparent case contains 55 pieces of the most popular AFM Micro2 & AFMT Micro3 Blade fuses.

Part #: AFMK



AFM5 x 5	AFM7.5 x 5	AFM10 x 5	AFM15 x 5	AFM20 x 5
AFM25 x 5	AFM30 x 5	AFMT5 x 5	AFMT7.5 x 5	AFMT10 & 15 x 5

Blade Fuse Power Take Off

Pack Qty: 1



- Adds additional circuit without cutting/splicing • Protects both resulting circuits • Voltage: Up to 32VDC
- Wire Size: 16AWG • Wire Colour: Red • Wire Length: 116 - 127mm
- Max Fuse Rating: 20A (Standard/Mini) - 10A (Mini LP/Micro2)

Type	Standard	Mini	Mini LP	Micro2
Rating	20A	20A	10A	10A
Part #	AFPTO	AFNPTO	AFNLPPTO	AFMPTO



Fuses

Glass Fuses

Low Voltage Glass Fuses for Automotive use

The automotive industry uses the "AG" prefix for most glass fuses. AG Fuses originally stood for "all glass." They can vary in length, diameter and amp rating. SFE (Society of Fuse Engineers) glass fuses are all 6.35mm in diameter, but vary in length according to the amp rating to ensure accurate fuse replacement. Both AG and SFE fuses were designed to suit vehicles prior to 1981. Glass fuse types: 1AG, 2AG, 3AG, 5AG, M205, SFE.

1AG Glass Fuses - Fast Acting

Pack Qty: 5



- Glass Body • Voltage: Up to 32VDC
- 6.35mmØ Tin Plated end caps • Dimensions: L15.90mm x 6.35mmØ

Amp	1	2	3	5	10	15	20
Part #	1AG1	1AG2	1AG3	1AG5	1AG10	1AG15	1AG20

2AG Glass Fuses - Fast Acting

Pack Qty: 5



- Glass Body • Voltage: Up to 32VDC
- 6.35mmØ Tin Plated end caps • Dimensions: L22.24mm x 6.35mmØ

Amp	2	5	10	20	25
Part #	2AG2	2AG5	2AG10	2AG20	2AG25

3AG Glass Fuses - Fast Acting

Pack Qty: 5



- Glass Body • Voltage: Up to 32VDC
- 6.35mmØ Tin Plated end caps
- Dimensions: L31.80mm x 6.35mmØ

Amp	0.25	0.5	1	1.5	2	3	5	7.5	10	15	20	25	30	35
Part #	3AG.25	3AG.5	3AG1	3AG1.5	3AG2	3AG3	3AG5	3AG7.5	3AG10	3AG15	3AG20	3AG25	3AG30	3AG35

M205 Glass Fuses - Fast Acting

Pack Qty: 5



- Glass Body • Voltage: Up to 250VAC • IR Rating: 35A or 10 x Rated Current
- 5.0mmØ Tin Plated end caps
- Dimensions: L20mm x 5mmØ

Amp	0.25	0.5	1	2	3	5	6	10	15
Part #	M205-250	M205-500	M205-1	M205-2	M205-3	M205-5	M205-6	M205-10	M205-15



Glass & Ceramic Fuses

Low Voltage Glass Fuses for Automotive use

5AB Ceramic Fuses - Fast Acting

Pack Qty: 1

- Ceramic Body
- Voltage: Up to 32VDC
- 10.30mmØ Tin Plated end caps
- Dimensions: L38.10mm x 10.30mmØ



Amp	16
Part #	5AB16

5AG Glass Fuses - Fast Acting

Pack Qty: 1

- Glass Body
- Voltage: Up to 32VDC
- 10.30mmØ Gold Plated end caps
- Dimensions: L38.10mm x 10.30mmØ



Amp	30	60
Part #	5AG30	5AG60

SFE Glass Fuses - Fast Acting

Pack Qty: 5

- Glass Body
- Voltage: Up to 32VDC
- Common in older Fords
- 6.35mmØ Tin Plated end caps
- Dimensions: L26.99mm x 6.35mmØ



Amp	14
Part #	SFE14

6AC European Torpedo Fuses - Fast Acting

Pack Qty: 5

- Bakelite/Ceramic Body
- Voltage: Up to 32VAC/DC
- Colour coded to amp rating
- Dimensions: L25mm x W5mm x H6mm



Amp	5 (Yellow)	8 (White)	16 (Red)	25 (Blue)
Part #	6AC5	6AC8	6AC16	6AC25

Glass Fuse Assortment Kit

The 18 compartment transparent case contains 90 pieces of the most popular glass & ceramic fuses.

Part #: **GFK**



3AG3 x 5	3AG5 x 5	3AG7.5 x 10	3AG10 x 10	3AG15 x 10	3AG20 x 5
3AG25 x 5	3AG30 x 5	6AC5 x 5	6AC8 x 5	6AC16 x 5	6AC25 x 5
M205-2 x 5	M205-3 x 5	M205-5 x 5			



High Current Bolt-Down Fuses

Low Voltage High Current Bolt-Down Fuses for Automotive use

High Current Bolt-Down fuses can be bolted into an appropriate fuse holder ensuring optimum electrical connection. These fuses provide protection for several amperage ratings up to 500A and include time delay characteristics (Slow-Blow). They are well suited to protect medium to large diameter wires that are usually some distance from the battery. Remember to place the fuse holder as close to the battery and as far away from the load as possible, so that it protects the wire from a short anywhere along its length. Any short between the power source and the fuse is not protected.

High Current bolt-down fuses include: MIDI® - MEGA® - STRIP

MIDI Series - Littelfuse® Slow Acting

Pack Qty: 1

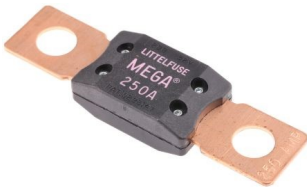


- Thermoplastic Body • Voltage: Up to 32VDC • Interrupt Rating: 1000A @ 32VDC
- Operating Temp: -40°C to 125°C • Tin Plated Copper Terminals - 2 x 5.5mmØ hole x 30mm spacing
- Dimensions: L41.0mm x W10.0mm x H8.3mm (max)

Amp	23	30	40	50	60	70	80	100	125	150	175
Part #	MIDI23	MIDI30	MIDI40	MIDI50	MIDI60	MIDI70	MIDI80	MIDI100	MIDI125	MIDI150	MIDI175

MEGA Series - Littelfuse® Slow Acting

Pack Qty: 1



- Thermoplastic Body • Voltage: Up to 32VDC • Interrupt Rating: 2000A @ 32VDC
- Operating Temp: -40°C to 125°C • Copper Terminals - 2 x 8.64mmØ hole x 50.8mm spacing
- Dimensions: L68.58mm x W19.05mm x H10.72mm (max) • *Bussmann Brand

Amp	40*	60*	80	100	125	150	175
Part #	MEGA40	MEGA60	MEGA80	MEGA100	MEGA125	MEGA150	MEGA175

Amp	200	225	250	300	350	400	500
Part #	MEGA200	MEGA225	MEGA250	MEGA300	MEGA350	MEGA400	MEGA500

METAL STRIP Series - Slow Acting

Pack Qty: 5



- Zinc Alloy Metal • Voltage: Up to 36VDC • Interrupt Rating: Up to 625A @ 36VDC
- Operating Temp: -40°C to 125°C • Zinc Alloy Terminals - 2 x 5.5mmØ slots x 30mm spacing
- Dimensions: L41.0mm x W11.0mm x H0.7mm (max)

Amp	30	40	50	60	80	100
Part #	SF30	SF40	SF50	SF60	SF80	SF100



Cartridge Fuses

Low Voltage, High Current Slow Acting Fuses for Automotive use

ASF Series - Large Female Link - Slow Acting

Pack Qty: 1



- Thermoplastic PA66 Body • Voltage: Up to 32VDC • Interrupt Rating: 1000A @ 32VDC
- Dimensions: L15.0mm x W22.2mm x H30.0mm

Amp	20	30	40	50	60	80
Part #	SBF20F	SBF30F	SBF40F	SBF50F	SBF60F	SBF80F

BTF Series - Large Male Link - Slow Acting

Pack Qty: 1



- Thermoplastic PA66 Body • Voltage: Up to 32VDC • Interrupt Rating: 1000A @ 32VDC
- Dimensions: L15.0mm x W22.2mm x H43.2mm

Amp	20	30	40	50	60	70	80	100	120	140
Part #	SBF20M	SBF30M	SBF40M	SBF50M	SBF60M	SBF70M	SBF80M	SBF100M	SBF120M	SBF140M

JTF Series - J Case Female Link - Slow Acting

Pack Qty: 1

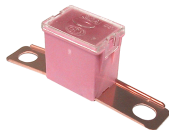


- Thermoplastic PA66 Body • Voltage: Up to 32VDC • Interrupt Rating: 1000A @ 32VDC
- Dimensions: L12.0mm x W14.1mm x H27.0mm

Amp	20	30	40	50	60
Part #	SBF20FS	SBF30FS	SBF40FS	SBF50FS	SBF60FS

LBF Series - Large 90° Male Link - Slow Acting

Pack Qty: 1



- Thermoplastic PA66 Body • Voltage: Up to 32VDC • Interrupt Rating: 1000A @ 32VDC
- Dimensions: L14.5mm x W62.0mm x H21.0mm

Amp	30	40	50	60	70	80	100	120
Part #	SBF20MR	SBF30MR	SBF40MR	SBF50MR	SBF70MR	SBF80MR	SBF100MR	SBF120MR

LHF Series - Large Female Lock Link - Slow Acting

Pack Qty: 1



- Thermoplastic PA66 Body • Voltage: Up to 32VDC • Interrupt Rating: 1000A @ 32VDC
- Dimensions: L15.0mm x W28.0mm x H37.0mm

Amp	45	65	75
Part #	SBF45FL	SBF65FL	SBF75FL



Fusible Links

Cartridge Fuses

Low Voltage, High Current Slow Acting Fuses for Automotive use

LJC Series - J Case Low Profile Female Link - Slow Acting

Pack Qty: 1



- Thermoplastic PA66 Body • Voltage: Up to 58VDC • Interrupt Rating: 1000A @ 58VDC
- Dimensions: L12.0mm x W14.1mm x H13.6mm

Amp	20	25	30	40	50	60
Part #	SBF20FLP	SBF25FLP	SBF30FLP	SBF40FLP	SBF50FLP	SBF60FLP

MJC Series - M Case Female Link - Slow Acting

Pack Qty: 1

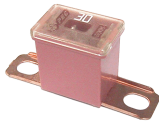


- Thermoplastic PA66 Body • Voltage: Up to 32VDC • Interrupt Rating: 1000A @ 32VDC
- Dimensions: L7.7mm x W10.7mm x H15.0mm

Amp	15	20	25	30	40
Part #	SBF15FM	SBF20FM	SBF25FM	SBF30FM	SBF40FM

SBF Series - Small 90° Male Link - Slow Acting

Pack Qty: 1



- Thermoplastic PA66 Body • Voltage: Up to 32VDC • Interrupt Rating: 1000A @ 32VDC
- Dimensions: L15.0mm x W48.3mm x H21.5mm

Amp	30	40	50	60	70	80	100	120
Part #	SBF20SMR	SBF30SMR	SBF40SMR	SBF50SMR	SBF70SMR	SBF80SMR	SBF100SMR	SBF120SMR

SHF Series - Large Female Lock Link - Slow Acting

Pack Qty: 1



- Thermoplastic PA66 Body • Voltage: Up to 32VDC • Interrupt Rating: 1000A @ 32VDC
- Dimensions: L13.0mm x W12.0mm x H31.0mm

Amp	25	30
Part #	SBF25FL	SBF30FL

Cartridge Fuse Assortment Kit

The 12 compartment transparent case contains 38 pieces of the most popular glass & ceramic fuses.

Part #: **SBFK**



SBF20M - SBF20F	SBF30MR	SBF30F	SBF40MR	SBF40FS	SBF50SMR
SBF20FS - SBF25FL	SBF30FL	SBF30FS	SBF40SMR	SBF50M	SBF50F
SBF30M	SBF30SMR	SBF40M	SBF40F	SBF50MR	SBF50FS
SBF60M	SBF60F	SBF70MR	SBF80M	SBF80F	SBF100SMR
SBF60MR	SBF65FL	SBF70SMR	SBF80MR	SBF100M	SBF120M
SBF60SMR	SBF70M	SBF75FL	SBF80SMR	SBF100MR	SBF120SMR



AF Blade Fuse Holders



Various Fuse Holders for Standard AF Blade Fuses

BFH1A - In-Line Weatherproof

In-Line Heavy Duty AF Blade Fuse Holder



- Black Thermoplastic with Splash Proof Cap
- 32VDC with 30A max load per circuit
- 2 x 102mm leads of 3.3mm² Orange wire
- Dimensions: L50mm x W15.5mm x H32mm

BFH1B - In-Line Weatherproof

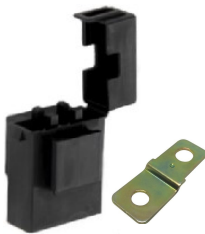
In-Line Standard Duty AF Blade Fuse Holder



- Red Thermoplastic with Splash Resistant Cap
- 32VDC with 20A max load per circuit
- 250mm wire loop of 1.84mm² red wire
- Dimensions: L27.4mm x W11mm x H44.5mm

BFH1C - Stackable

Single Stackable AF Blade Fuse Holder with Cap



BFH1CB Bracket Optional

- Black Thermoplastic with Splash Resistant Cap
- 32VDC with 30A max load per circuit
- 2 x BFH1CT terminals for 1.25 - 2.0mm² wire
- Dimensions: L26.7mm x W18.2mm x H24mm

BFH1PM - Panel Mount

Panel Mount AF Blade Fuse Holder with LED



- Black Thermoplastic with Splash Resistant Cap
- 32VDC with 30A max load per circuit
- Terminals (2 x 6.3mm) • LED Blow Indicator
- Dimensions: L35.7mm x W19mm x H37.4mm

BFH1U - Stackable

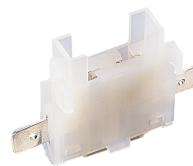
Single Stackable AF Blade Fuse Holder



- Black Thermoplastic
- 32VDC with 30A max load per circuit
- 2 x BFH1U terminals for 1.25 - 2.0mm² wire
- Dimensions: L12.2mm x W31mm x H37mm

BFHW - In-Line Stackable

Stackable In-Line AF Blade Fuse Holder



- White Thermoplastic
- 32VDC with 30A max load per circuit
- 2 x 6.3mm spade terminals
- Dimensions: L43.3mm x W12 mm x H30.5mm

MRA3F - Stackable

Single Stackable AF Blade Fuse Holder



- Optional Clear Cover (MRAFC) sold separately
- Dovetails with MRA3 & MRA6/K relay holders
- 32VDC with 30A max load per circuit
- 2 x MRA3FT terminals for 2-3mm² wire
- Dimensions: L36mm x W14.8mm x H36mm

WPBFH - Weatherproof

Weather Pack AF Blade Fuse Holder with Mount



- Black Thermoplastic Body & Cover
- Water Resistant Seal to IP67 Rating
- 32VDC with 30A max load per circuit
- 2 x WPBFHT terminals for 3-5mm² wire
- Dimensions: L23mm x W45.5mm x H46.5mm



Fuse Holders

AFN Mini Blade Fuse Holders



Various Fuse Holders for Standard AFN Mini Blade Fuses

BFHN - In-Line Weatherproof



In-Line Heavy Duty AFN Mini Blade Fuse Holder

- Black Thermoplastic with Splash Proof Cap
- 32VDC with 30A max load per circuit
- 2 x 150mm leads of 10AWG Red wire
- Dimensions: L40.5mm x W11mm x H24.4mm

MBFH - Stackable



Stackable AFN Mini Blade Fuse Holder with Cap

- Black Polyamide Body & Cap
- 32VDC with 14A max load per circuit
- 2 x F1.1HD terminals for 1.5 - 2.5mm² wire
- Dimensions: L16.1mm x W17.4mm x H34mm

AFX Maxi Blade Fuse Holders



Various Fuse Holders for Standard AFX Maxi Blade Fuses

MFH - Stackable



Stackable AFX Maxi Blade Fuse Holder with Cap

- Black Thermoplastic, Clear Cover & Bracket
- 32VDC with up to 75A max load per circuit
- 2 x MFHT terminals for 8-10mm² wire
- Dimensions: L23.7mm x W42.8mm x H63mm

MFHW - In-Line Weatherproof



In-Line Heavy Duty AFX Maxi Blade Fuse Holder

- Black Thermoplastic with Splash Proof Cap
- 32VDC with 60A max load per circuit
- 2 x 130mm leads of 8AWG Red wire
- Dimensions: L80.5mm x W21.4mm x H54mm

3AG Glass Fuse Holders



Various Fuse Holders for 3AG Glass Fuses

E1206A - In-Line Heavy Duty



In-Line Heavy Duty 3AG Glass Fuse Holder

- Black Bakelite
- 32VDC with 30A max load per circuit
- 170mm leads of 12AWG Yellow wire
- Dimensions: L64.35mm x 13.35mmØ

WFH1 - In-Line Light Duty



In-Line Light Duty 3AG Glass Fuse Holder

- Black Bakelite
- 32VDC with 10A max load per circuit
- 170mm leads of 18AWG Red wire
- Dimensions: L59.4mm x 15mmØ



3AG Glass Fuse Holders



Various Fuse Holders for 3AG Glass Fuses

H3376/D1 - In-Line

Utililux In-Line 3AG Glass Fuse Holder



- White Polypropylene Housing
- 32VDC with 15A max load per circuit
- 1 x H3375 Housing & 2 x H3374 terminals
- Dimensions: L56mm x W14.6mm x H11.8mm

LF8 - Panel Mount

Panel Mount 3AG Glass Fuse Holder



- Black High Temp Thermoplastic
- 250VDC with 20A max load per circuit
- 2 x 6.3mm Tin Plated Brass terminals
- Dimensions: L54mm x 12.8mmØ mount hole

Bolt-Down Fuse Holders

Various Fuse Holders for Midi & Mega Bolt-Down Fuses



MIDI - Littelfuse® Stackable

Stackable Midi Fuse Holder with Cap



- Black Thermoplastic with Splash Resistant Cap
- 32VDC with 200A max load per circuit
- 2 x M5 Studs, Hex Nuts & Lock Washers
- Dimensions: L51.4mm x W27.3mm x H25mm

MIDIFH - Bolt-Down

MTA Midi Fuse Holder with Hinged Cover



- Black Thermoplastic with Splash Resistant Cap
- 32VDC with 125A max load per circuit
- 2 x M5 Studs & 2 x 4.8mm Mount Holes
- Dimensions: L70mm x W26mm x H22.7mm

MIDIFH2 - Dual Bolt-Down

Dual Midi Fuse Holder with Hinged Cover



- Black Thermoplastic with Splash Resistant Cap
- 32VDC with 150A combined max load
- 4 x M5 Studs & 2 x 6.0mm Mount Holes
- Dimensions: L80mm x W44.5mm x H23.1mm

MEGA - Littelfuse® Stackable

Stackable MEGA Fuse Holder with Cap



- Black Thermoplastic with Splash Resistant Cap
- 32VDC with 500A max load per circuit
- 2 x M8 Studs, Hex Nuts & Lock Washers
- Dimensions: L119mm x W38mm x H31mm



Fuse Blocks



AF Blade Fuse Blocks

Various Multi Fuse Block for Standard AF Blade Fuses

BFH4 - 4 Fuse



Axial (Rear) Connection AF Blade Fuse Block

- Black Thermoplastic with Splash Proof Cap
- 32VDC with 20A per circuit/80A Total
- Terminals (8 x 6.3mm) - Mounting (2 x M5)
- Dimensions: L66mm x W26mm x H58mm

BFH6 - 6 Fuse



Axial (Rear) Connection AF Blade Fuse Block

- Black Thermoplastic with Splash Proof Cap
- 32VDC with 20A per circuit/100A Total
- Terminals (12 x 6.3mm) - Mounting (2 x M5)
- Dimensions: L85mm x W27mm x H59mm

BFH4C - Bussed 4 Fuse



Stackable Bussed Axial AF Blade Fuse Block

- Black Thermoplastic (No Cover)
- 32VDC with 20A per circuit/80A Total
- Terminals (4 x JD21730/1 x JD4568)
- Dimensions: L92mm x W29mm x H49mm

BFH4A - 4 Fuse



Lateral (Side) Connection AF Blade Fuse Block

- Black Thermoplastic with Splash Proof Cap
- 32VDC with 30A per circuit/80A Total
- Terminals (8 x 6.3mm) - Mounting (2 x M5)
- Dimensions: L80mm x W45mm x H37mm

BFH6A - 6 Fuse



Lateral (Side) Connection AF Blade Fuse Block

- Black Thermoplastic with Splash Proof Cap
- 32VDC with 30A per circuit/100A Total
- Terminals (12 x 6.3mm) - Mounting (2 x M5)
- Dimensions: L100mm x W45mm x H37mm

BFH8 - 8 Fuse



Lateral (Side) Connection AF Blade Fuse Block

- Black Thermoplastic with Splash Proof Cap
- 32VDC with 30A per circuit/135A Total
- Terminals (12 x 6.3mm) - Mounting (2 x M5)
- Dimensions: L120mm x W45mm x H37mm

BFH4B - Single Power Input 4 Fuse



Bussed AF Blade Fuse Block

- Black Thermoplastic with Splash Proof Cap
- 32VDC with 30A per circuit/100A Total
- Input (1 x M5 Stud) - Output (4 x 6.3mm QC)
- Dimensions: L47mm x W85mm x H36mm

BFH6B - Single Power Input 6 Fuse



Bussed AF Blade Fuse Block with LED Indicators

- Black Thermoplastic with Splash Proof Cap
- 32VDC with 20A per circuit/100A Total
- Input (1 x M5 Stud) - Output (6 x 6.3mm QC)
- Dimensions: L65mm x W85mm x H36mm



AF Blade Fuse Blocks

Various Multi Fuse Block for Standard AF Blade Fuses

BFB10C - Single Power Input - 10 Fuse



Bussed AF Blade Fuse Block & Sticker Set

- Black Thermoplastic with Splash Proof Cap
- 32VDC with 30A per circuit/150A Total
- Input (1 x M5 Stud) - Output (10 x 6.3mm QC)
- Dimensions: L100mm x W93mm x H40mm

BFB8 - Panel Mount Single Power Input - 8 Fuse



Panel Mount Bussed AF Blade Fuse Block

- Black Thermoplastic with Splash Proof Cap
- 32VDC with 30A per circuit/200A Total
- Input (1 x M6 Stud) - Output (8 x JD21730)
- Dimensions: L57mm x W85mm x H49mm

BFH10B - Single Power Input - 10 Mini Fuse



Bussed AFN Mini Blade Fuse Block *

- Black Thermoplastic with Splash Proof Cap
- 32VDC with 20A per circuit/150A Total
- Input (1 x M5 Stud) - Output (10 x 6.3mm QC)
- Dimensions: L95mm x W85mm x H36mm

N54426 - Pre-Wired - 12 Fuse



Pre-Wired Axial Connection AF Blade Fuse Block

- Black Thermoplastic with Splash Proof Cap
- 32VDC with 30A per circuit/80A Total
- 300mm Leads - (2 x 40A Max Input Leads)
- Dimensions: L153mm x W41mm x H55mm

N54446 - Dual Power Input - 6 Fuse



Dual Bussed AF Blade Fuse Block & Sticker Set

- Black Thermoplastic & Lockable Clear Cover
- 32VDC with 30A per circuit/120A Total
- Dual Power & Single Grounding Inputs
- Dimensions: L125mm x W95mm x H58mm

N54450BL - Dual Power Input - 12 Fuse



Dual Bussed AF Blade Fuse Block & Sticker Set

- Black Thermoplastic & Lockable Clear Cover
- 32VDC with 30A per circuit/120A Total
- Dual Power & Single Grounding Inputs
- Dimensions: L165mm x W95mm x H58mm

BFB16 - Stackable - 16 Fuse



Stackable Axial Connection AF Standard Blade Fuse Block

- Black Thermoplastic with Splash Proof Cap
- 32VDC with 30A per circuit/225A Total
- Terminals (32 x MRA3FT) - Mounting (4 x M6)
- Optional 12 Way Buss (BFB16-BUSS)*
- Dimensions: L130mm x W89mm x H64mm
- Interlocks with RB4 and RB7 relay holders



Power Distribution Modules

Bussmann RTMR Power Distribution Modules



Various Multi Fuse & Relay Modules for AFN Mini Blade Fuses, Circuit Breakers and ISO280 Relays

BFBN20 - Axial Connection 20 Fuse Module

AFN



Sealed Bussmann RTMR AFN Mini Blade Fuse Block Kit

- Black Thermoplastic & Cover with IP66 Rating
- Accepts 20 x AFN Fuses/CBAFN Breakers
- 32VDC with 2 x 80A M6 bussed input studs
- 30A max load per output terminal
- Terminals (20 x MP280FT-TL) - Seals (20 x WPS-Grey) - Cavity Plugs (5 x WPCP)
- Dimensions: L113mm x W86mm x H64mm
- Brackets also available (refer below)

RFB5/10- Axial Connection 10 Fuse & 5 Relay Module

AFN/ISO280



Sealed Bussmann RTMR AFN Mini Blade Fuse/ISO280 Micro Relay Block Kit

- Black Thermoplastic & Cover with IP66 Rating
- 10 x AFN Fuses/5 x Micro ISO280 Relays
- 32VDC with 2 x 80A M6 bussed input studs
- 30A max load per output terminal
- Terminals (35 x MP280FT-TL) - Seals (35 x WPS-Grey) - Cavity Plugs (5 x WPCP)
- Dimensions: L113mm x W86mm x H64mm
- Brackets also available (refer below)

Bussman RTMR Brackets

Various mounting brackets to suit Bussmann RTMR power distribution modules. Available in 3 different height profiles: Low, Medium and High.



Part #	RFB-BKT-LOW	RFB-BKT-MED	RFB-BKT
Profile	Low	Medium	High
Material	Zinc Annealed Powder Coating	Zinc Annealed Powder Coating	Stainless Steel Natural 1.5mm
Dimensions	L152mm x W91.5mm x H31mm	L152mm x W91.5mm x H45mm	L173mm x W91.5mm x H56mm



Littelfuse® Power Distribution Modules



Various Multi Fuse & Relay Modules for AFN Mini Blade Fuses, Circuit Breakers and ISO280 Relays

RFB4 - 8 Position Fuse/Relay Module

AFN/ISO280



Sealed Littelfuse® 8 Position AFN Mini Blade Fuse/ISO280 Relay Module Kit

- Black Thermoplastic & Cover with IP66 Rating • 32VDC with up to 120A Total Current Rating
- Accepts a combination of up to 4 x AFN Fuses/Breakers or 2 x ISO280 Ultra Micro Relays
- Terminals (8 x MP280FT-12G) - Seals (8 x WPS-BLUE) - Cavity Plugs (5 x WPCP)
- Dimensions: L36mm x W60mm x H78mm including mounting bracket

RFB9 - 18 Position Fuse/Relay Module

AFN/ISO280



Sealed Littelfuse® 18 Position AFN Mini Blade Fuse/ISO280 Relay Module Kit

- Black Thermoplastic & Cover with IP66 Rating • 32VDC with 30A load per output terminal
- Accepts a combination of up to 9 x AFN Fuses/Breakers or 2 - 3 x ISO280 Relays
- Terminals (18 x MP280FT-12G) - Seals (18 x WPS-BLUE) - Cavity Plugs (5 x WPCP)
- Dimensions: L51.7mm x W80.4mm x H74.2mm including mounting bracket

SBFH - 4 Fuse Module

AFN/J CASE



Sealed Littelfuse® AFN Mini Blade Fuse/J Case Cartridge Fuse Module Kit

- Black Thermoplastic & Cover with IP67 Rating • 32VDC with up to 100A Max Input Current
- Accepts 2 x AFN Fuses (30A Max) and 2 x J Case Cartridge Fuses (60A Max)
- Terminals (2 x MP280FT-12G & 2 x MP630MT-DT) - Seals (2 x WPS-BLUE & 2 x MP630S)
- Cavity Plugs (2 x WPCP & 2 x MP630CP) - M6 Input Stud
- Dimensions: L33.53mm x W86.5mm x H77.25mm including mounting bracket