

PACKARD ELECTRIC

Weather Pack Series

Lap Locked Female Terminals. Male Pin flexes outward. Terminals have dual lock tangs. Housings have positive locks. Separate seals for Terminals & Housings. Slots on Housings accept Mounting Clips. Rated at 19 Amps



Terminals

Part No.	Description	Fig.
WPMT	Male	1.
WPFT	Female	2.

Kit No.	Part No.	Description
CHWP1	WPFH1	One Way Female Housing
	WPMH1	One Way Male Housing
CHWP2	WPFH2	Two Way Female Housing
	WPMH2	Two Way Male Housing
CHWP3	WPFH3	Three Way Female Housing
	WPMH3	Three Way Male Housing
CHWP4	WPFH4	Four Way Female Housing (Square)
	WPMH4	Four Way Male Housing (Square)
CHWP4A	WPFH4A	Four Way Female Housing (In-line)
	WPMH4A	Four Way Male Housing (In-Line)
CHWP5	WPFH5	Five Way Female Housing (White)
	WPMH5	Five Way Male Housing
CHWP6	WPFH6	Six Way Female Housing
	WPMH6	Six Way Male Housing

Note: Kit Includes Each Housing, Terminals (WPFT, WPMT) and Seals to Suit (WPS)

Seals

WPS	Green	Standard Wire
WPS - Red	Red	Small Wire
WPS - Blue	Blue	Large Wire
Pack size: 25 & 100.		



Cavity Plugs

Used in vacant Terminal position.
- Green
Part No. - WPCP



Pack size: 5 & 100.

Bracket

Part No. - WPB



Extraction Tool

Part No. - WPE



Other Extraction Tools

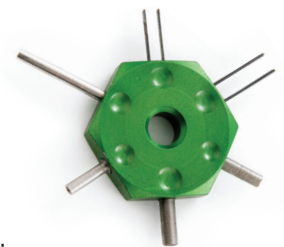
Part No. - HT60630B/1



Part No. - P2SET



Part No.	Description	Colour
L14900	G.M. C3 Type	Red
L56500	General Purpose	Green



Part No. WPA1B Kit contains 1 - 6 Way Housings, Terminals, Seals & Extracting Tool



MULTI-BLOCKS

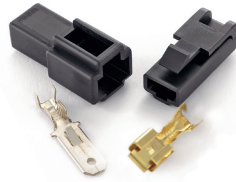
Multi-Block Connectors - Latched

6.3mm Q.C. System. 20 Amp.

Contents of KITS – Housings and all Terminals.

One Way

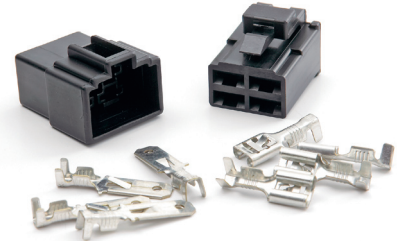
Kit Part No.
CHJ1B



JD038B Tab Housing
JD039B Receptacle Housing
Note: Only accepts H1074

Four Way

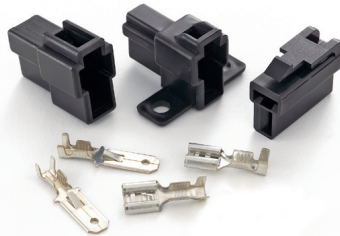
Kit Part No.
CHJ4B



JD059B Tab Housing
JD060B Receptacle Housing

Two Way

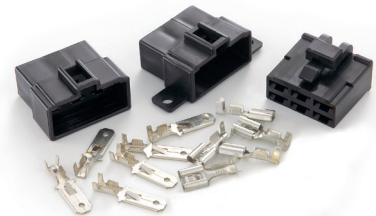
Kit Part No.
CHJ2B
CHJM2B*



JD045B Tab Housing
JD045MB* Mountable Tab Housing
JD046B Receptacle Housing

Six Way

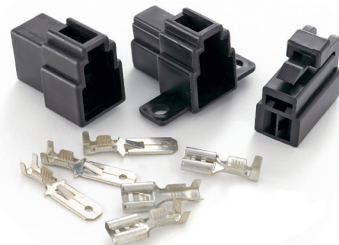
Kit Part No.
CHJ6B
CHJM6B*



JD070B Tab Housing
JD070MB* Mountable Tab Housing
JD071B Receptacle Housing

Three Way

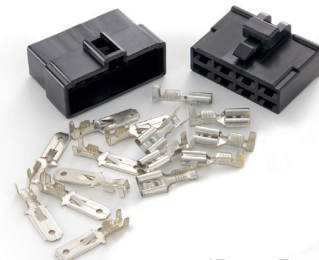
Kit Part No.
CHJ3B
CHJM3B*



JD052B Tab Housing
JD052MB* Mountable Tab Housing
JD053B Receptacle Housing

Eight Way

Kit Part No.
CHJ8B



JD072B Tab Housing
JD073B Receptacle Housing

Note: Housings available in packs of 10 & 100.
Terms. H2832ET (male) and H3555ET (female) used in kits

Part No.
CHJA2B

Kit contains 1 to 11 Way
Housings and includes Terminals.



MULTI-BLOCKS

3mm Q.C. Japanese Multi-Blocks (12amp)

Three Way
Kit Part No.
CHY3



Tab Housing
JD8030

Recept. Housing
JD9030

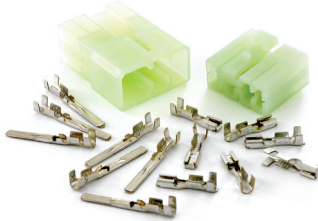
Five Way
Kit Part No.
CHY5



Tab Housing
JD8050

Recept. Housing
JD9050

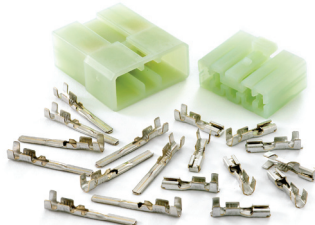
Seven Way
Kit Part No.
CHY7



Tab Housing
JD8070

Recept. Housing
JD9070

Nine Way
Kit Part No.
CHY9



Tab Housing
JD8090

Recept. Housing
JD9090

Thirteen Way
Kit Part No.
CHY13



Tab Housing
JD8130

Recept. Housing
JD9130

Seventeen Way
Kit Part No.
CHY17



Tab Housing
JD8170

Recept. Housing
JD9170

Terminals - Male: H25200 - Female: H25201

090 Series Japanese Multi Blocks (10amp)

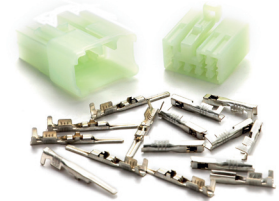
Six Way
Kit Part No.
CHB6



Tab Housing
0906T

Recept. Housing
0906R

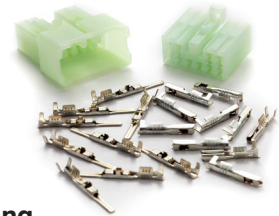
Eight Way
Kit Part No.
CHB8



Tab Housing
0908T

Recept. Housing
0908R

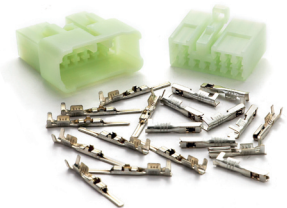
Ten Way
Kit Part No.
CHB10



Tab Housing
09010T

Recept. Housing
09010R

Twelve Way
Kit Part No.
CHB12



Tab Housing
09012T

Recept. Housing
09012R

Fourteen Way
Kit Part No.
CHB14



Tab Housing
09014T

Recept. Housing
09014R

Terminals - Male: H25104 - Female: H25107

Multi-Block Kits

Part No.
090A/K Contains 090 Series Housings and Terminals

CHYAK Contains 3mm QC Housings and Terminals



MULTI-BLOCKS

Tab Housing (Female) accepts Male Terminal

Recept Housing (Male) accepts Female Terminal

070 - Multi-Blocks & Terminals (5amp)



CH08



CH010



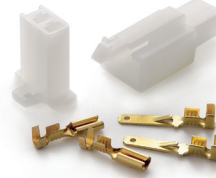
CH014

Way	Kit P/No.	Tab Housing	Recept. Housing
8	CH08	0708T	0708R
10	CH010	07010T	07010R
12	CH012	07012T	07012R
14	CH014	07014T	07014R
18	CH018	07018T	07018R

Male : 070T Female : 070R

Pack size: Housing 10 & 100. Terminals 25 & 100.

2.8mm Q.C. Latched Multi-Blocks



CHML2



CHML3



CHML4



CHML6



CHML9

Molex Multi-Blocks (7.5amp)



CHX1



CHX2



CHX3

Way	Kit P/No.	Male Housing	Female Housing
1	CHX1	M1619-R	M1619-P
2	CHX2	H9372	H9322
3	CHX3	H9353	H9303
4	CHX4 (Square)	M2163-R1	M2163-P
4	CHX4A (Flat)	H9354	H9304
6	CHX6	H9356	H9306
9	CHX9	H9359	H9309
12	CHX12	H9362	H9312
15	CHX15	M1375-R1	M1375-P4

Housings are available separately, in packs of 10 & 100.
 The above Part No.s have mounting ears. Other housings may be supplied without mounting ears.
 Terminals - Female : H9001 - Male : H9002.
 Packs 25 & 100.

Way	Kit P/No.	Tab Housing	Recept. Housing
2	CHML2	JD020	JD021
3	CHML3	JD022	JD023
4	CHML4	JD024	JD025
6	CHML6	JD026	JD027
9	CHML9	JD028	JD029

Housings available in packs of 10 & 100.
 Terminals - Female : H3739 - Male : H2858.
 Packs 25 & 100.

Part No. 070AK is a starter kit with a selection of 070 Series plugs and terminals.
 (As per top left of page).



PACKARD ELECTRIC PLUG KITS

Cam Angle

Part No. CAS/K
Description 3 Pin Housing Kit to suit CAM Sensor



Crank Angle VN

Part No. CAS VN/K
Description 4 Pin Housing kit to suit VN Crank Angle Sensor



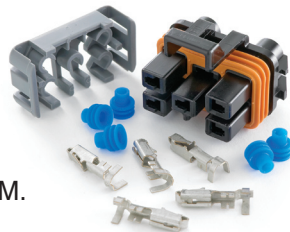
Coolant Temperature

Part No. CTS/K
Description 2 Pin Housing Kit to suit Coolant Temperature Sensor



Detroit ECM

Part No. DECM/K
Description 5 Pin Housing Kit to suit Detroit E.C.M.



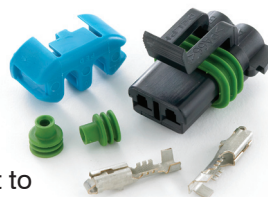
Detroit Engine Temperature

Part No. DET/K
Description 3 Pin Housing Kit to suit Detroit Engine Temperature Sensor



High Temperature Alarm

Part No. HTAS/K
Description 2 Pin Housing Kit to suit High Temperature Alarm Switch



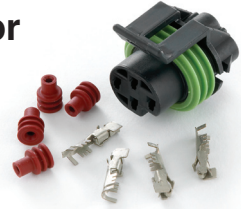
Idle Air Control

Part No. IAC/K
Description 4 Pin Housing Kit to suit Holden Idle Air Control



Low Coolant Level Sensor

Part No. LCLS/K
Description 4 Pin Housing Kit to suit Low Coolant Level Sensor



Manifold Air Temperature

Part No. MAT/K
Description 2 Pin Housing Kit to suit Manifold Air Temperature Sensor



MAP Sensor Kit (Manifold Absolute Pressure)

Part No. MSK/G
Description 3 Pin Housing Kit. 1 Bar Keyway



MAP Sensor Kit (Manifold Absolute Pressure)

Part No. MSK/O
Description 3 Pin Housing Kit. 3 Bar Keyway



Throttle Position

Part No. TPSK
Description 3 Pin Housing to suit Holden Throttle Position Sensor



Cummins Oil Pressure Sensor

Part No. COP/K
Description 3 Pin Housing to suit Cummins Oil Pressure Sensor



PACKARD ELECTRIC PLUG KITS

Falcon Throttle Position

Part No.
FTPS/K

Description
3 Pin Housing Kit to suit
Ford Throttle Position Sensor



Throttle Position

Part No.
TPK6

Description
6 Pin Housing Kit
to suit Throttle Position Sensor



Knock Sensor

Part No.
KS/K

Description
Single Pin Housing Kit
to suit Knock Sensor



Mitsubishi/Bosch Regulator

Part No.
MBRK

Description
Mitsubishi to Bosch
Regulator Adaptor Kit



Mass Airflow MO

Part No.
TPK5

Description
5 Pin Housing Kit to
suit Mass Airflow Sensor



Thick Film Ignition

Part No.
TFIK

Description
6 Pin Housing Kit to
suit Ford Thick Film Ignition



Oil Pressure Switch

Part No.
OPS/K

Description
4 Pin Housing Kit
to suit GMH V6/V8 Oil pressure
Switch (Only 3 Pins & Cavity Plug
required)



Nippon Denso Alternator Plug

Part No.
NDA/K

Description
3 Pin Housing Kit to
suit Nippon Denso
Alternator



Onboard Diagnostic

Part No.
OBD2/CK

Description
Onboard Diagnostic
Housing Kit fitted in vehicle



Globe Holder - BA

Part No.
BAP/K

Description
2 Pin Globe Holder
Housing Kit



Purge Canister

Part No.
PCC/K

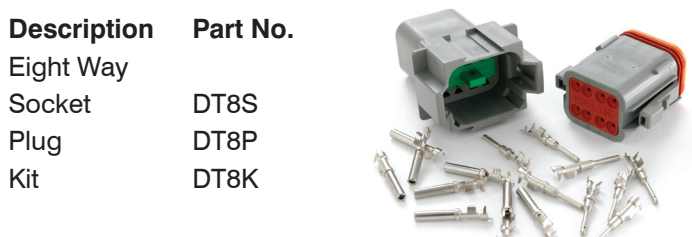
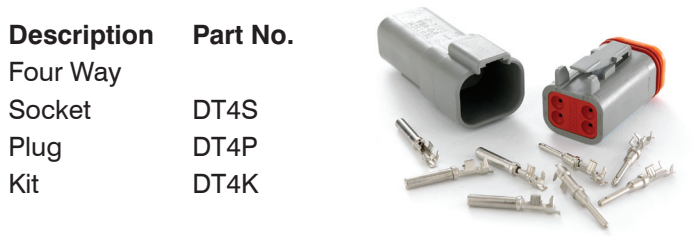
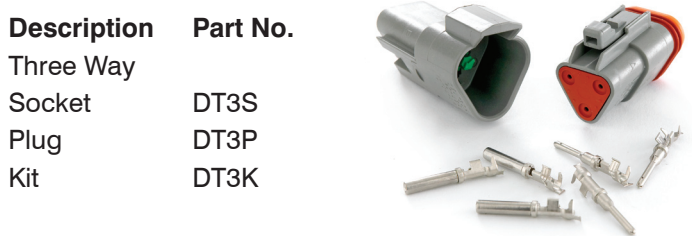
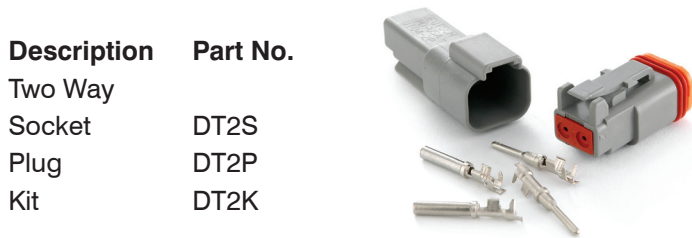
Description
2 Pin Housing Kit to suit
Purge Canister Continuous Vacuum



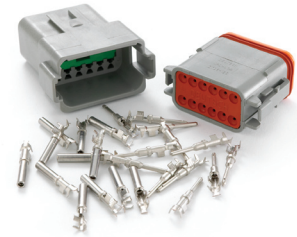
DEUTSCH CONNECTORS

DT Series

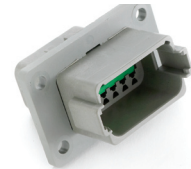
The DT range of housings are made of Thermoplastic (-55°C to 125°C rated). They are latched with Silicone Seals and Secondary Wedge Locks. The Terminals are Copper Alloy (Nickel Plated) and have a current rating of 13 Amps. The Manufacturer recommends that a properly wired and mated connection is waterproof to three feet.



Description	Part No.
Twelve Way	
Socket	DT12S
Plug	DT12P
Kit	DT12K



Mountable	DT12SM
-----------	--------



Note: Kit Includes Each Housing and Standard Roll-In Crimp Terminals (DTFT16,DTMT16)

Accessories for DT Series

Description	Part No.
-------------	----------

Solid Pin (Male)	DTSP16
------------------	--------



Solid Socket (Female)	DTSS16
-----------------------	--------



Other Terminals Available on Request (Including Roll-In Crimp Type & Gold)

Cavity Plug	DTCP
-------------	------



Mounting Bracket	DTMB
------------------	------



Deutsch DT Kit

Part No.

DTA ("Roll in" Pins) DTASC (Solid Pins)



*Spare wedges are available

DEUTSCH CONNECTORS

DTM Series

Specs as DT Series. Current rating 7.5 Amps cont.

Description

Socket
Plug
Kit

Part Nos.

DTM2S
DTM2P
DTM2K



Description

Socket
Plug
Kit

Part Nos.

DTM3S
DTM3P
DTM3K



Description

Socket
Plug
Kit

Part Nos.

DTM4S
DTM4P
DTM4K

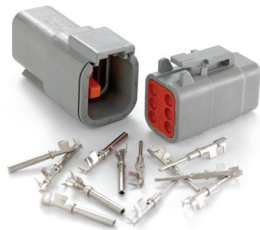


Description

Socket
Plug
Kit

Part Nos.

DTM6S
DTM6P
DTM6K

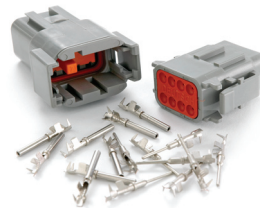


Description

Socket
Plug
Kit

Part Nos.

DTM8S
DTM8P
DTM8K

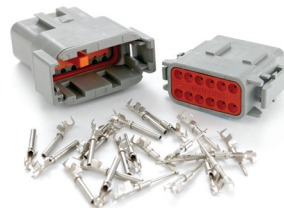


Description

Socket
Plug
Kit

Part Nos.

DTM12S
DTM12P
DTM12K



Note: Kit Includes Each Housing and Standard Terminals (DTM-FT20,DTM-MT20)

Accessories for DTM Series

Description

Solid Pin (Male)

Part Nos.

DTMSP20



Solid Socket (Female)

DTMSS20



Other Terminals Available on Request
(Including Gold)

Cavity Plug

DTMCP



Mounting Bracket

DTMB



Heavy Duty Kit

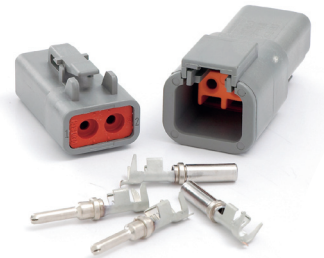
25 Amp Rating

Description

2 Pin Housing Kit
Takes 5mm Cable

Part No.

DTPK2



Available in 4 Pin Housing Kit

Part No.

DTM/AGK

Description

DTM Kit Includes Gold Terminals



FUEL INJECTION

Terminals

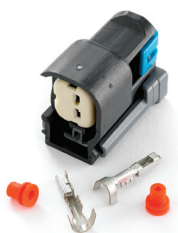


Fig	Part No.	Description
1.	F1.1	Standard Single Lock Tang
2.	F1.1 HD	Extra Contact Lever, Double Lock Tang
3.	JD838	Standard Timer Terminal

Multec 2 Injector Housing

New generation fuel injector from Delphi Automotive Systems. Suits long, short & mini range of injectors

Part No.	Description
F1.2 Mult/k	Complete Kit



Delphi Injector Housing

Part No.	Description
DIP/K	Complete Kit



Denso Injector Housings

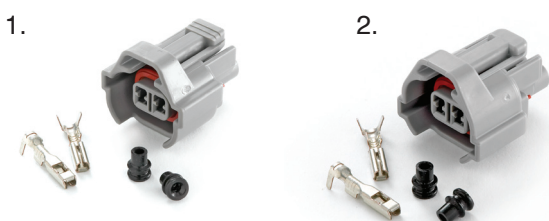


Fig	Part No.	Description
1.	DIH/K	High Keyway
2.	DIL/K	Low Keyway
	DIB/K	Bottom Keyway

Suit later Japanese fuel injectors, incl. Terminals & Seals

Fuel Injection Housings

Part No.	Description
JD014	Suits early injectors 2 way
H3737	Terminal to suit. 2.8mm Lock Tang



Junior Timer Connectors



Fig	Way	Kit Part No.	Description
1.	2	F1.2MK	Male Kit
2.	2	F1.2KE	Early Kit
3.	2	F1.2K	Female Kit
3.	2	F1.2KB	Genuine Bosch
4.	3	F1.3K	Female Kit
5.	3	F1.3EXK	Distributor
6.	3	F1.3MK	Male Kit
7.	4	F1.4K	Female Kit
8.	4	F1.4MK	Male Kit
9.	5	F1.5K	Female Kit
10.	6	F1.6K	Female Kit
11.	7	F1.7K	Female Kit

Kits contains housing, boot, terminals & seals for support. 2, 3, 4 Female Kit parts sold Separately.

Right Angle Boot available for 2 Pin Housing

Part No. F1.2BRA



Part No.	Description
FIK	A selection of Junior Timer Housing, Terminals & Seals

