

The background of the entire page is a light gray honeycomb or hexagonal grid pattern. The text is centered on this background.

King Kone

CATALOG 2022



KING KONE METAL MACHINE

\$1,699

The King Kone pre-roll cone filling machine is ideal for businesses who are looking to efficiently increase production, with time on their side. This newer model, metal King Kone machine, is more substantial and heavy duty, resulting in superior outcomes. Our modular machine is affordable, versatile and user friendly. It contains all of the necessary components to pack half-gram 84mm pre-rolled cones, 3/4-gram 98mm pre-rolled cones, and 1 gram 109mm king-sized pre-rolled cones! Simply set up the appropriate cone filling trays, load the cones, and initiate the process by filling the top tray with your desired product. What makes our product unique, compared to others, is the adjustable knob that allows for the desired density, while packaging your product.



2 PIECE TRAY SET

\$350

This two piece set is the standard option that comes with the machine. The bottom tray (89mm) along with the top tray (20mm) give the customer the ability to fill 89mm, 109mm cones.



DOG WALKER

\$350

This tray top is an additional attachment sold separately. It measures to be 70mm to accommodate the Dog Walker sized cones



SLIM TRAY (REEFER)

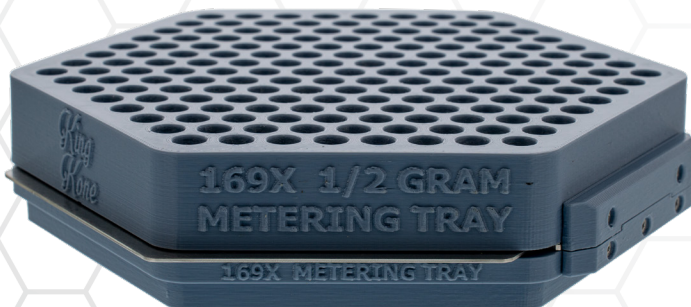
\$350

This tray top is an additional attachment sold separately. It measures to be 70mm to accommodate the Dog Walker sized cones.



PORTION CONTROL TRAY (METERING TRAY) \$450

This loading platform takes away the guesswork and allows the distribution of a precise amount of .5 grams of material per pre-roll, when going through the filling process. With the Sliding Plate installed on the bottom, the Loader is packed with material to the desired height/weight based on your particular grind consistency. Once the Loader is mounted to top of the Bottom Base the Sliding Plate can be pulled out, in which the material will fall down into the Top platform and loaded into the pre-roll.



**169X 1/2 GRAM
METERING TRAY**



**115X 1/2 GRAM
METERING TRAY**

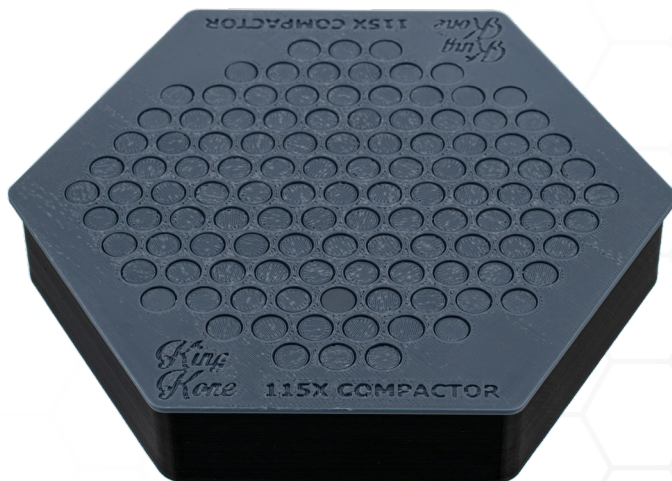
COMPACTING FINGERS

\$350

This accessory is utilized at the end of the packing process to pack the end of the product down, in order to close off the cone



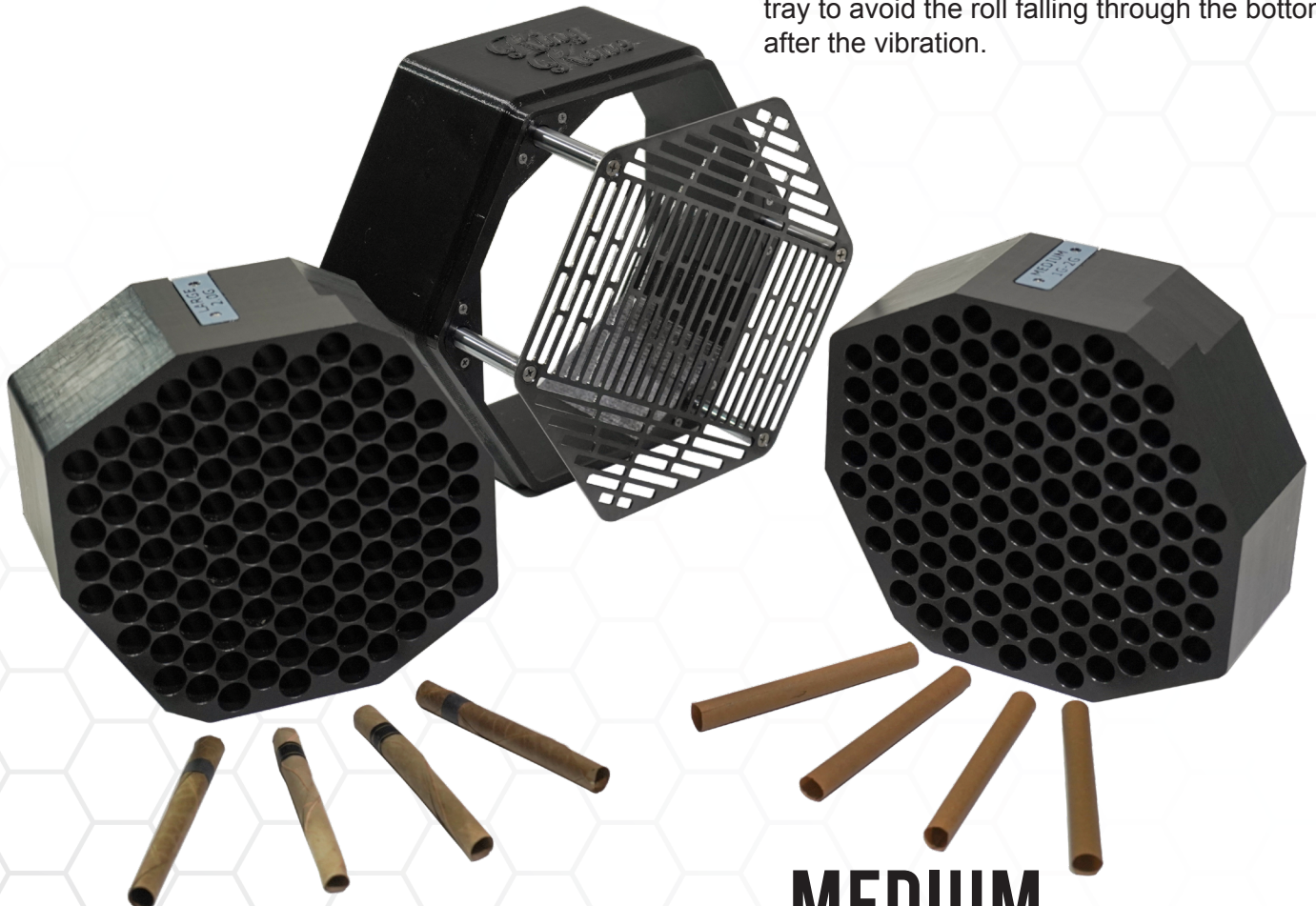
169 COMPACTOR
- STANDARD - DOG WALKER SLIMS



115 COMPACTOR

CONVERSION KIT \$350

This is a modular packing platform that is designed to load cylindrical cigarette style pre-rolls. The interchangeable inserts hold 115 1 gram to 2 gram pre-rolled cylinders and smaller cigarette style diameters (Inserts accomodated the desired size). On the bottom component of the tray, the vertically moving plate mounts directly to the sloped platform, which will mount to the installed magnets. It is important the original slotted black plate is removed before operation to perform correctly. Special designs have been accustomed to this tray to avoid the roll falling through the bottom, after the vibration.



**LARGE
\$350**

**MEDIUM
\$350**

SMALL \$350



KING SHRED \$2500

This is a one of a kind grinder that guarantees a consistent grind every run! Many people who use other grinders face an issue of pulverizing their product leaving dust, chunks, and clusters: making it unpleasant to roll with. This machine has been designed to eliminate all of those unwanted outcomes and ensures the desired consistent and fluffy grind. It contains a motorized hopper that has the ability to work through a pound of material in 1.5 minutes. Its easy to clean and maintain, and there's no doubt that it will increase the efficacy and quality of your production.



KING SHRED AND KING KONE BUNDLE \$3799

The Ultimate Bundle our state of the art KING SHRED along with our KING KONE PRE-ROLL Cone Filling Machine.