

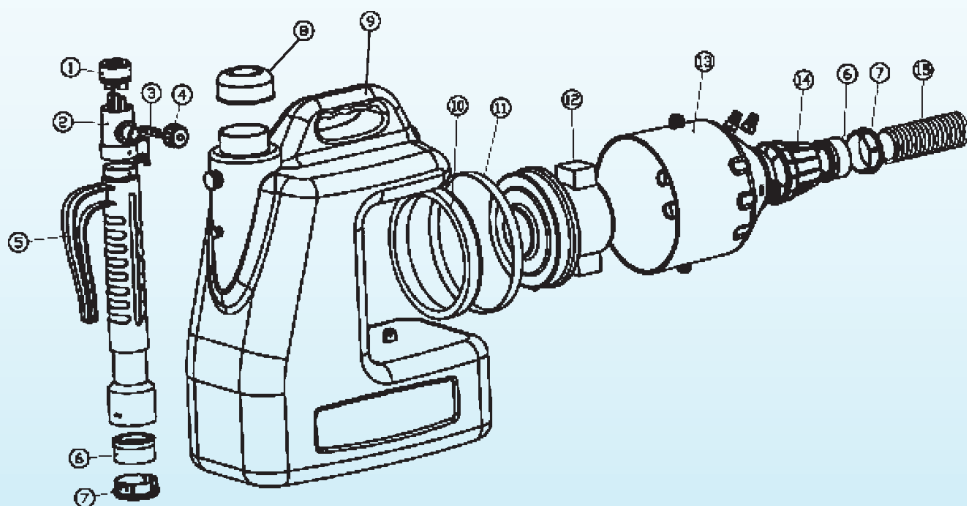
GROW

ULV ELECTRIC ATOMIZER

20-50 Micron VMD

Instruction Manual





- Grow1 ULV Electric Atomizer (Item 333110) Structure Illustration -

1	Bell Mouth
2	Switch Body
3	Switch Core
4	Adjusting Nut
5	Handle
6	Pipe Seal Washer
7	Pipe Holder
8	Tank Cover
9	Tank Reservoir

10	Motor Seal Washer
11	Fixing Ring
12	Motor
13	Motor Cover
14	Pipe Connector
15	Pipe
16	Air Inlet
17	Water Outlet
18	Power Switch



General:

Before use, please read all instructions carefully. If any questions arise from the use of the Atomizer, please refer to this set of instructions or contact the dealer or manufacturer.

Application:

The Grow1 ULV Electric Atomizer utilizes a high-power motor and superior design to bring high efficiency in uniform droplet size, long spray range, reliability, and overall durability. It is specially designed to be used in any size of garden and greenhouse operations. The uniqueness of the Atomizer also allows it to be practically used in hospitals, offices, and food processing facilities or anywhere that sanitization and disinfection is needed. The benefits and uses of the Atomizer extend beyond its uses in foliar spraying/feeding, pest prevention, and disinfection/sanitization.

Warning:

1. DO NOT use the Atomizer in conjunction with highly toxic or banned pesticides, undiluted solutions, or otherwise harmful chemicals. The use of the Atomizer at all times should comply with this set of instructions as well as local, state, and federal laws. When using any type of chemical, pesticide, or foliar spray in conjunction with the Atomizer, compliance with the solution manufacturer's safety instructions should be followed at all times.
2. NEVER use the Atomizer in conjunction with any corrosive, flammable, or explosive liquids/solutions. Prohibited liquids for use in the Atomizer include but are not limited to; Gasoline, Alcohol, Phenylacetone, Caustic Soda solutions, Hydrochloric Acid, etc.
3. To avoid the possibility of shock or injury, never use the Atomizer when wet. This applies to the user (their hands/feet) or the outside of the Atomizer unit itself.
4. Safety equipment should be used at all times when operating the Atomizer. Recommended safety equipment for use with the Atomizer include but are not limited to; protective clothing, gloves, safety glasses, and masks.
5. The Atomizer should only be used by an individual who is familiar with the performance and safety necessary to operate the unit.
6. Do not let children operate or play with the Atomizer.
7. Do not operate the Atomizer if you are under the influence of any prescription medication, drugs, or alcohol.



Operation:

1. Plug the Atomizer into an appropriately powered outlet. Turn the power switch on the Atomizer ON. Ensure that the motor is running correctly and without fault.
2. Ensure that the Atomizer is powered OFF before filling. Add your desired solution into the Tank Reservoir through a filtered funnel ensuring that no particulates enter the Tank. Gently tighten the Tank Lid.
3. Power the Atomizer ON.
4. Adjust the spray volume via the Adjusting Nut to the desired requirements.
5. Begin spraying with the Atomizer.
6. During use of the Atomizer, the high speed flow of the gas will cause the Handle and Piping to warm up. This is a naturally occurring phenomenon and should not cause alarm.
7. When you have finished spraying and are ready to power OFF the Atomizer, raise the Spray Nozzle above the level of the Tank Reservoir.
8. Power OFF the Atomizer while holding the Spray Nozzle above the Tank Reservoir for 3 seconds. The purpose of this is to let the remaining liquid in the Pipe reflux into the Tank Reservoir to ultimately prevent moisture damage to the Motor.
9. Turn OFF the Adjusting Nut to prevent chemical outflow when adding liquid during the next use of the Atomizer.

Operation Warnings:

1. DO NOT operate the Atomizer if the supply voltage does not match the listed requirements.
2. DO NOT use the Atomizer under any circumstances if there is damage to the Power Cord, Motor, Tank Reservoir, Piping, or any of the units associated equipment.
3. DO NOT fold or crush the Piping as this can cause irreversible damage.
4. DO NOT power ON and OFF the Atomizer frequently as this can cause irreversible damage to the Motor.
5. If unusual sounds are being produced from the Atomizer, discontinue use immediately and contact the seller or manufacturer.
6. If any issues occur with the Atomizer and the problem cannot be solved locally, contact the seller or manufacturer.
7. The Atomizer should be repaired by a technical professional only.
8. When storing the Atomizer, store in a cool dry location to prevent corrosion or damage to the unit.
9. DO NOT operate the Atomizer when its associated equipment is wet. This may cause shock.
10. DO NOT operate the Atomizer when hands or feet are wet. This may cause shock.
11. After use, clean the Atomizer with sterile water. Always run the Atomizer with sterile water after use with any herbicides or spraying solutions to thoroughly clean the system.

Technical Specifications:

Tank Capacity	2.5 Gallons (10 Liters)
Dimensions	18.5x7.5x19in (47x19x48cm)
Net Weight	9lbs (4.1kgs)
Gross Weight	10.8lbs (4.9kgs)
Rated Volatge	120VAC / 50Hz
Motor Power	1.2KW (1200 Watts)
Particle Size	20-50 Microns (Adjustable)
Max Flow Rate	750 mL/min
Horizontal Cover	~ 20 Feet (~ 6 Meters)
Vertical Cover	~ 6.5 Feet (~ 2 Meters)

Troubleshooting:

Problem	Reason	Solution
Atomizer is powered ON but not running.	<ul style="list-style-type: none"> Power Plug is disconnected, loose, or cut/damaged. Power Switch is faulty. Motor is faulty. Motor Brush is damaged or corroded. 	<ul style="list-style-type: none"> Ensure that the Power Plug is connected/undamaged. Replace Power Switch. Replace Motor. Replace Motor Brush.
Atomizer is running, but no spray is produced.	<ul style="list-style-type: none"> Blocked Valve. Tank tubing is blocked. Tank tubing is folded/pinched. Tank tubing is removed. Air Inlet is blocked. 	<ul style="list-style-type: none"> Clean Atomizer. Check/Reset Tank tubing. Tank Tubing removed. Clean Air Inlet.
Intermittent/Irregular spray pattern or volume.	<ul style="list-style-type: none"> Tank tubing is blocked. Tank tubing is folded/pinched. Tank tubing is removed. Tank tubing is damaged. 	<ul style="list-style-type: none"> Clean Tank Tubing. Check/Reset Tank Tubing. Replace Tank Tubing.
Atomizer is producing abnormal sounds.	<ul style="list-style-type: none"> Air Inlet is blocked. Motor bearing is damaged. Motor Brush is damaged. 	<ul style="list-style-type: none"> Clean Atomizer. Clean Air Inlet. Replace Motor Replace Motor Brush
Poor atomization or Spray Nozzle dripping.	<ul style="list-style-type: none"> Adjusting Nut too open. Air Inlet blocked. 	<ul style="list-style-type: none"> Close Adjusting Nut. Clean Atomizer. Clean Air Inlet.
Spray temperature too high.	<ul style="list-style-type: none"> Atomizer has been running too long. Supply voltage incorrect. Air Inlet blocked. Motor is worn. 	<ul style="list-style-type: none"> Discontinue use. Clean Atomizer. Clean Air Inlet. Replace Motor.



DL WHOLESALE

7041 Las Positas Road Suite A
Livermore, CA 94551
www.dlwholesale.com
510.550.0018