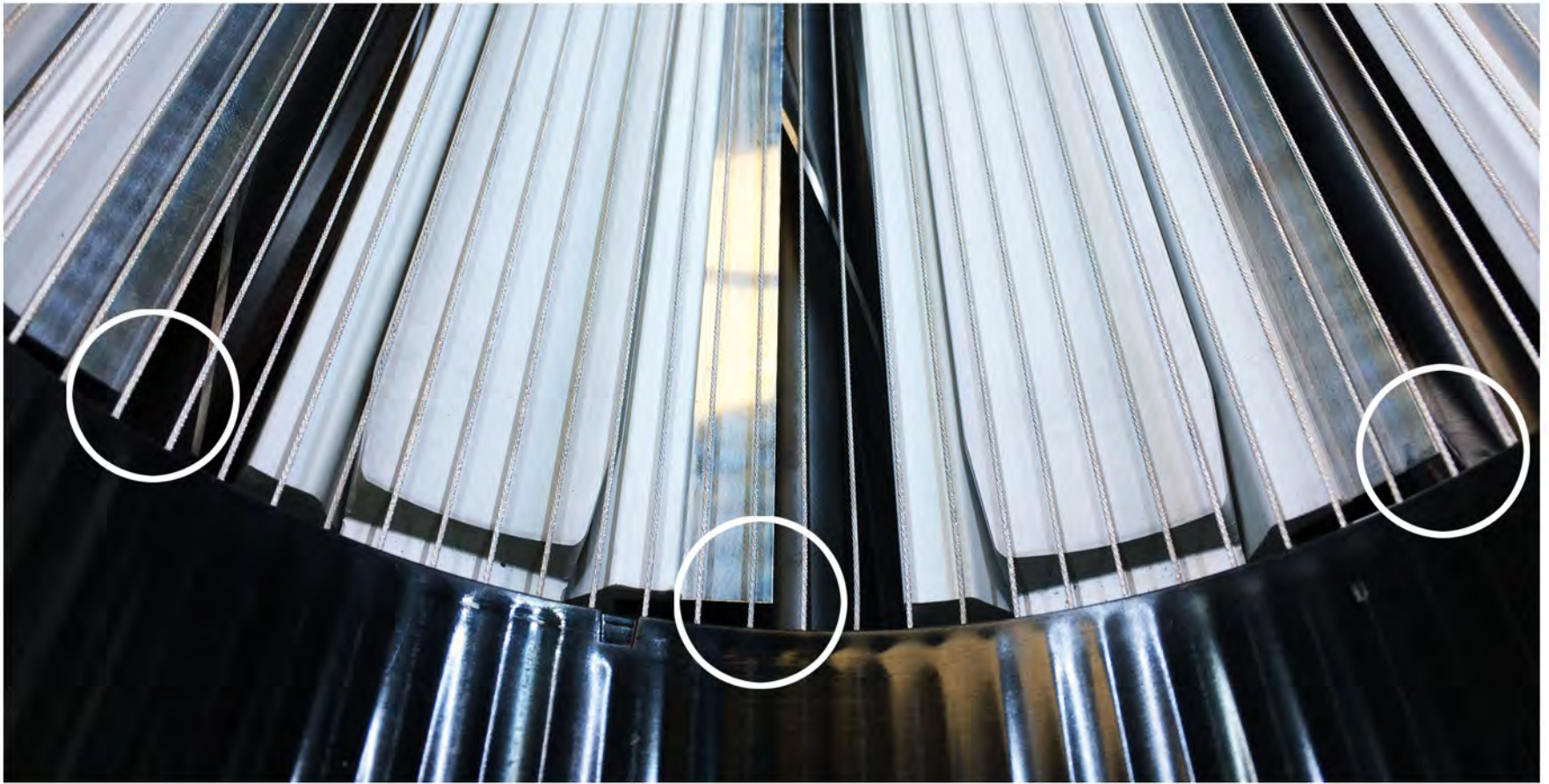
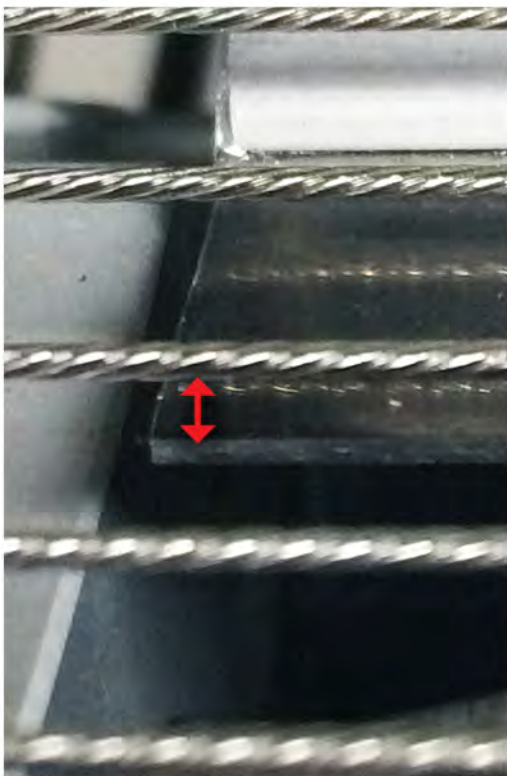


SIX-POINT BLADE INSPECTION

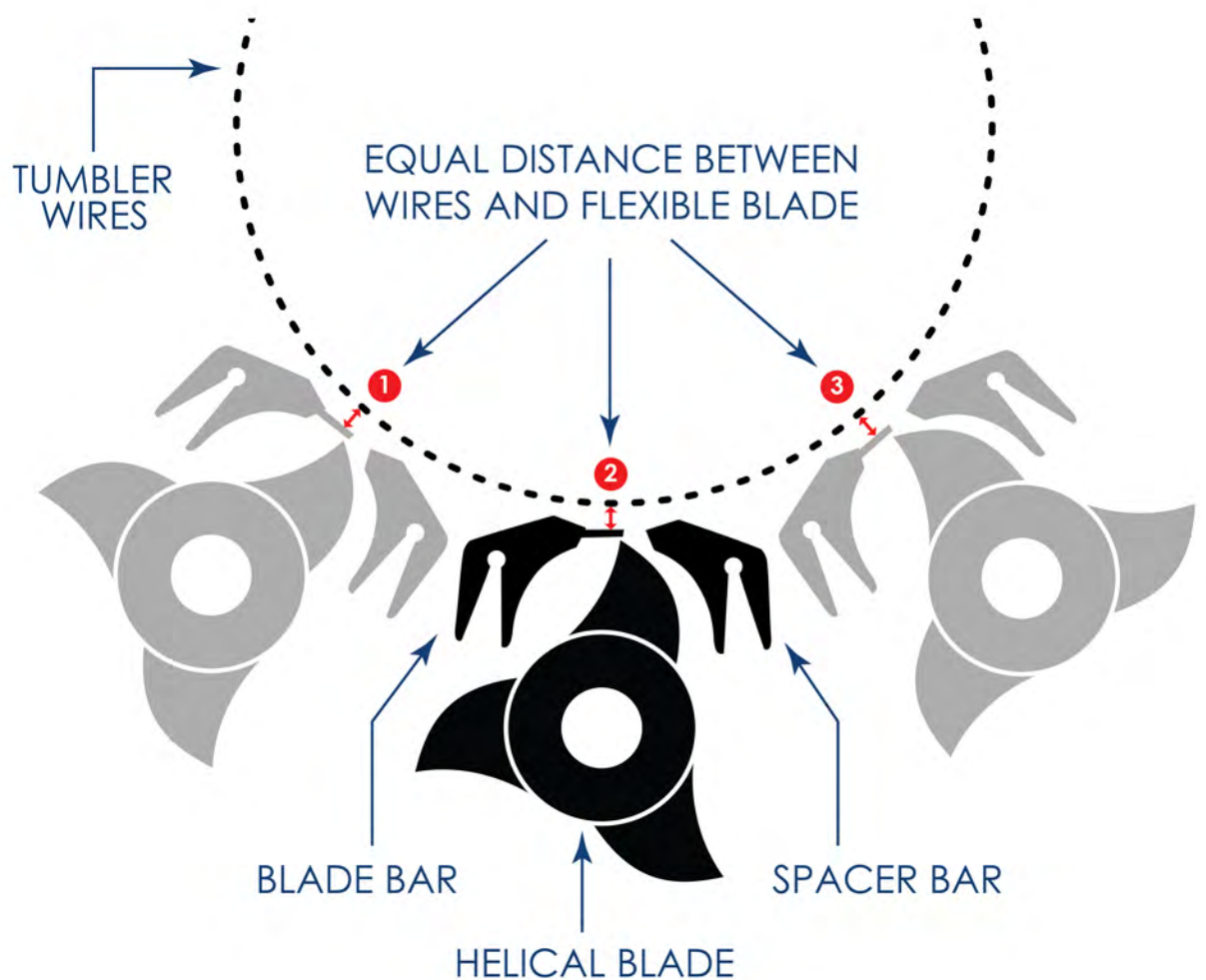
(TO BE COMPLETED EVERY TIME LID IS CLOSED)



Before running the M108, make sure the **point of each bed knife blade** is exactly the **same distance** from the **tumbler wire** at each tumbler end.



Distance between the blade and tumbler wire as indicated in diagram to the right



3 POINTS X 2 ENDS = 6 POINTS